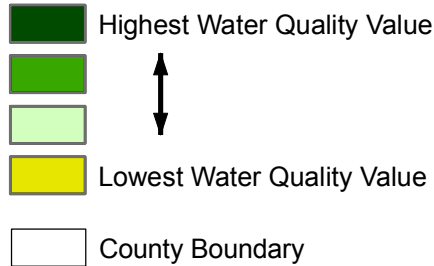


Water Quality Protection Value

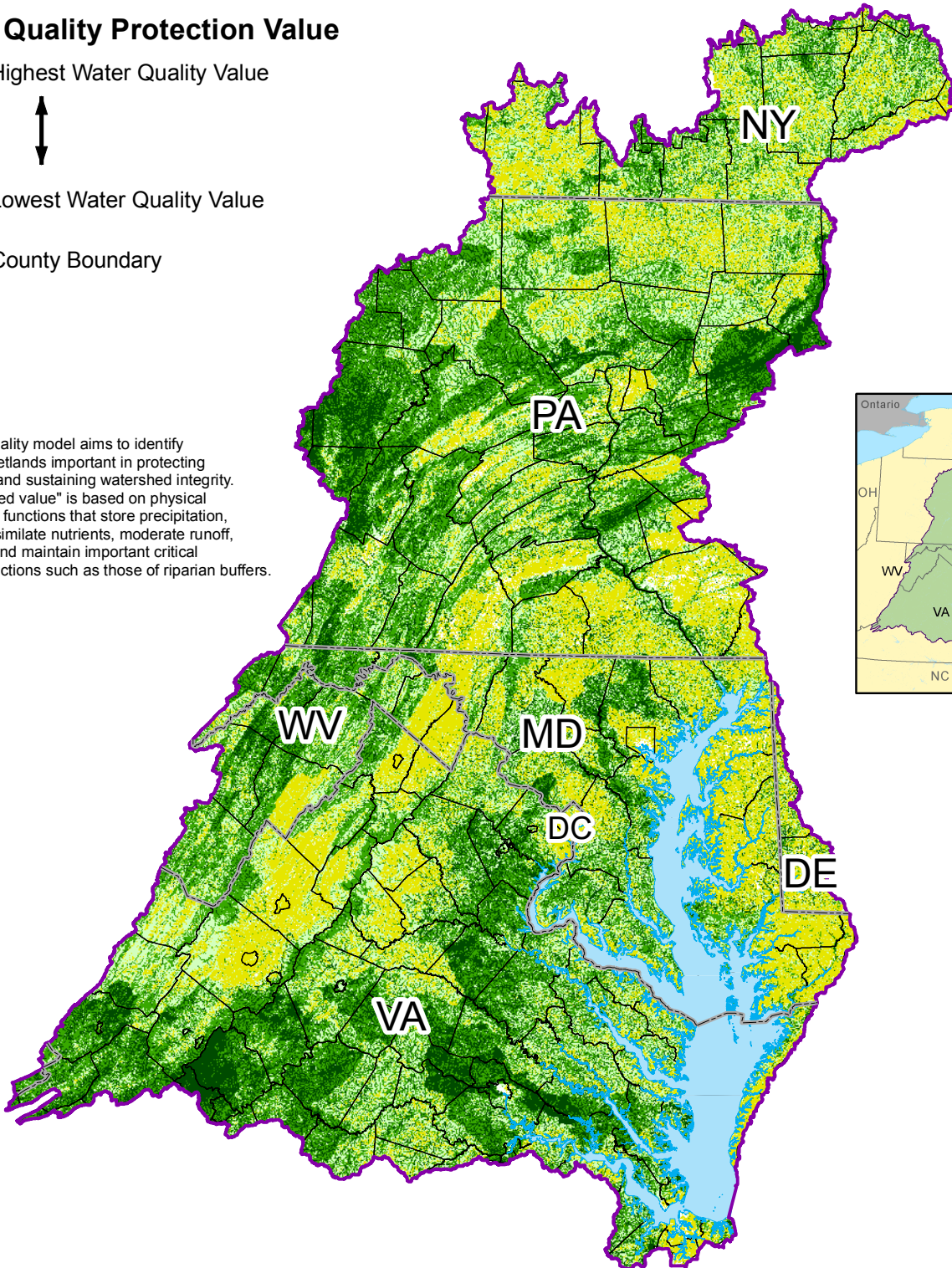
Resource Lands Assessment for the Chesapeake Bay Watershed



Water Quality Protection Value



The Water Quality model aims to identify forests and wetlands important in protecting water quality and sustaining watershed integrity. This "watershed value" is based on physical and biological functions that store precipitation, retain and assimilate nutrients, moderate runoff, protect soils and maintain important critical landscape functions such as those of riparian buffers.



Data Sources: Chesapeake Bay Program

For more information, visit www.chesapeakebay.net
Disclaimer: www.chesapeakebay.net/termsfuse.htm

