




Classification of Watersheds

Based on 2000 Land Cover

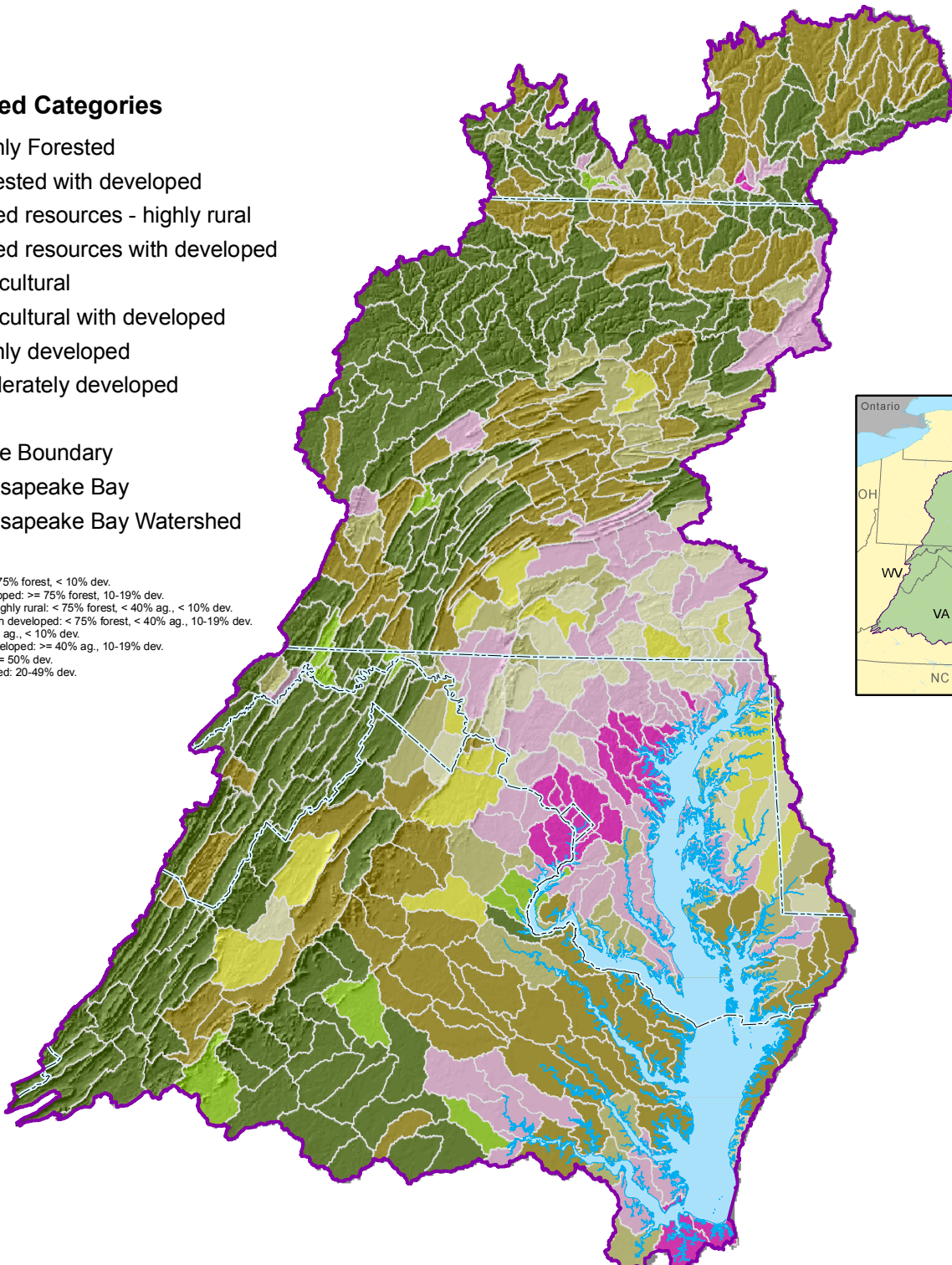


Watershed Categories

-  Highly Forested
-  Forested with developed
-  Mixed resources - highly rural
-  Mixed resources with developed
-  Agricultural
-  Agricultural with developed
-  Highly developed
-  Moderately developed

-  State Boundary
-  Chesapeake Bay
-  Chesapeake Bay Watershed

Highly forested: $\geq 75\%$ forest, $< 10\%$ dev.
Forested with developed: $\geq 75\%$ forest, 10-19% dev.
Mixed resources - highly rural: $< 75\%$ forest, $< 40\%$ ag., $< 10\%$ dev.
Mixed resources with developed: $< 75\%$ forest, $< 40\%$ ag., 10-19% dev.
Agricultural: $\geq 40\%$ ag., $< 10\%$ dev.
Agricultural with developed: $\geq 40\%$ ag., 10-19% dev.
Highly developed: $\geq 50\%$ dev.
Moderately developed: 20-49% dev.



Data Sources: Chesapeake Bay Program
For more information, visit www.chesapeakebay.net
Disclaimer: www.chesapeakebay.net/termsfuse.htm

