

Protected Lands 2006

Chesapeake Bay Watershed



Protected Lands Category

-  Public
-  Private
-  Military
-  Agricultural Easement

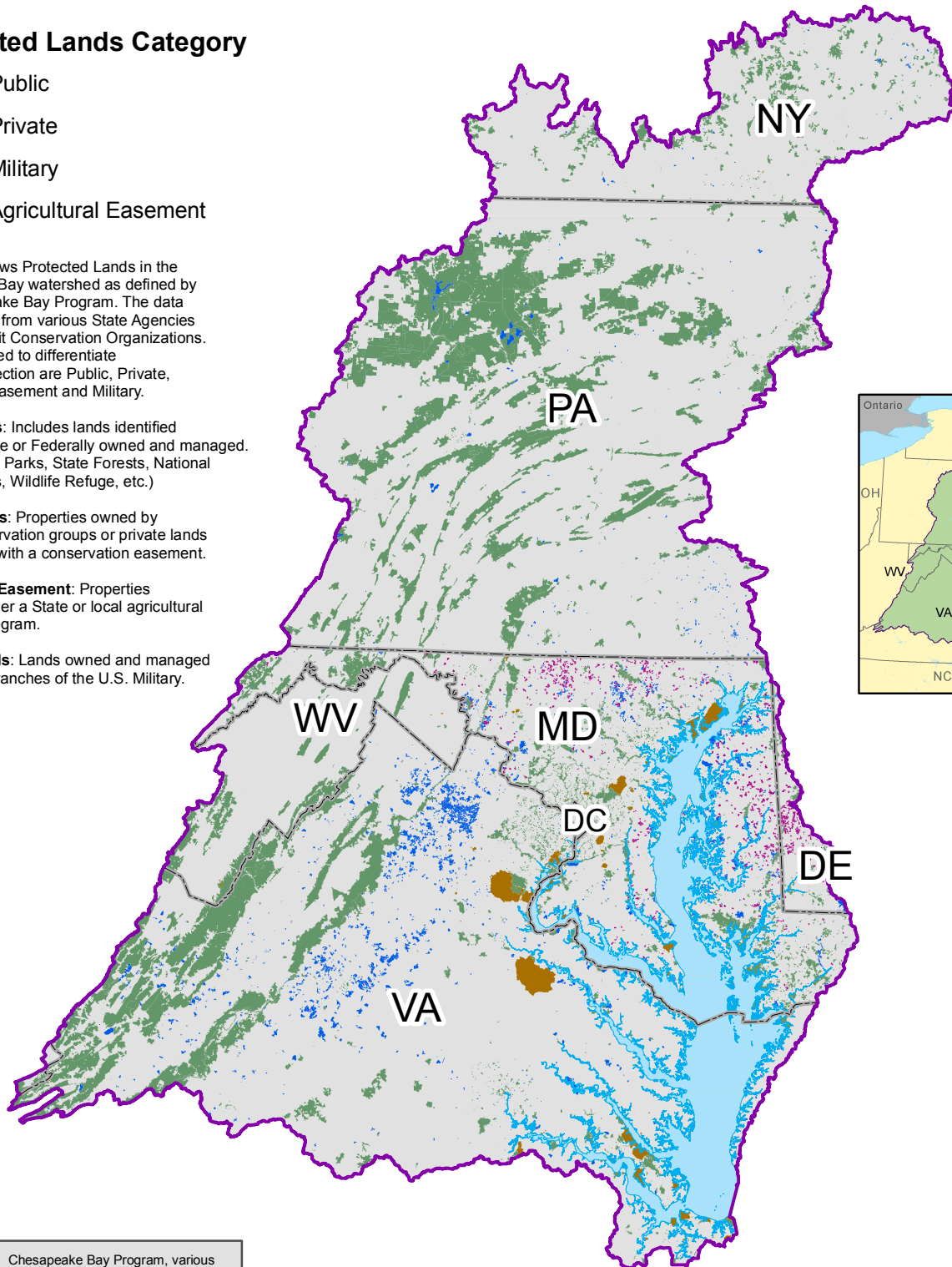
This map shows Protected Lands in the Chesapeake Bay watershed as defined by the Chesapeake Bay Program. The data was acquired from various State Agencies and Non-Profit Conservation Organizations. The terms used to differentiate levels of protection are Public, Private, Agricultural Easement and Military.

Public Lands: Includes lands identified as Local, State or Federally owned and managed. (e.g. - County Parks, State Forests, National Parks/Forests, Wildlife Refuge, etc.)

Private Lands: Properties owned by private conservation groups or private lands encumbered with a conservation easement.

Agricultural Easement: Properties protected under a State or local agricultural easement program.

Military Lands: Lands owned and managed by different branches of the U.S. Military.



Data Sources: Chesapeake Bay Program, various state and local agencies and organizations

For more information, visit www.chesapeakebay.net
Disclaimer: www.chesapeakebay.net/termsfuse.htm

