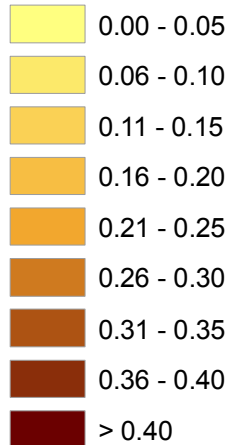


All Sources of Total Phosphorus

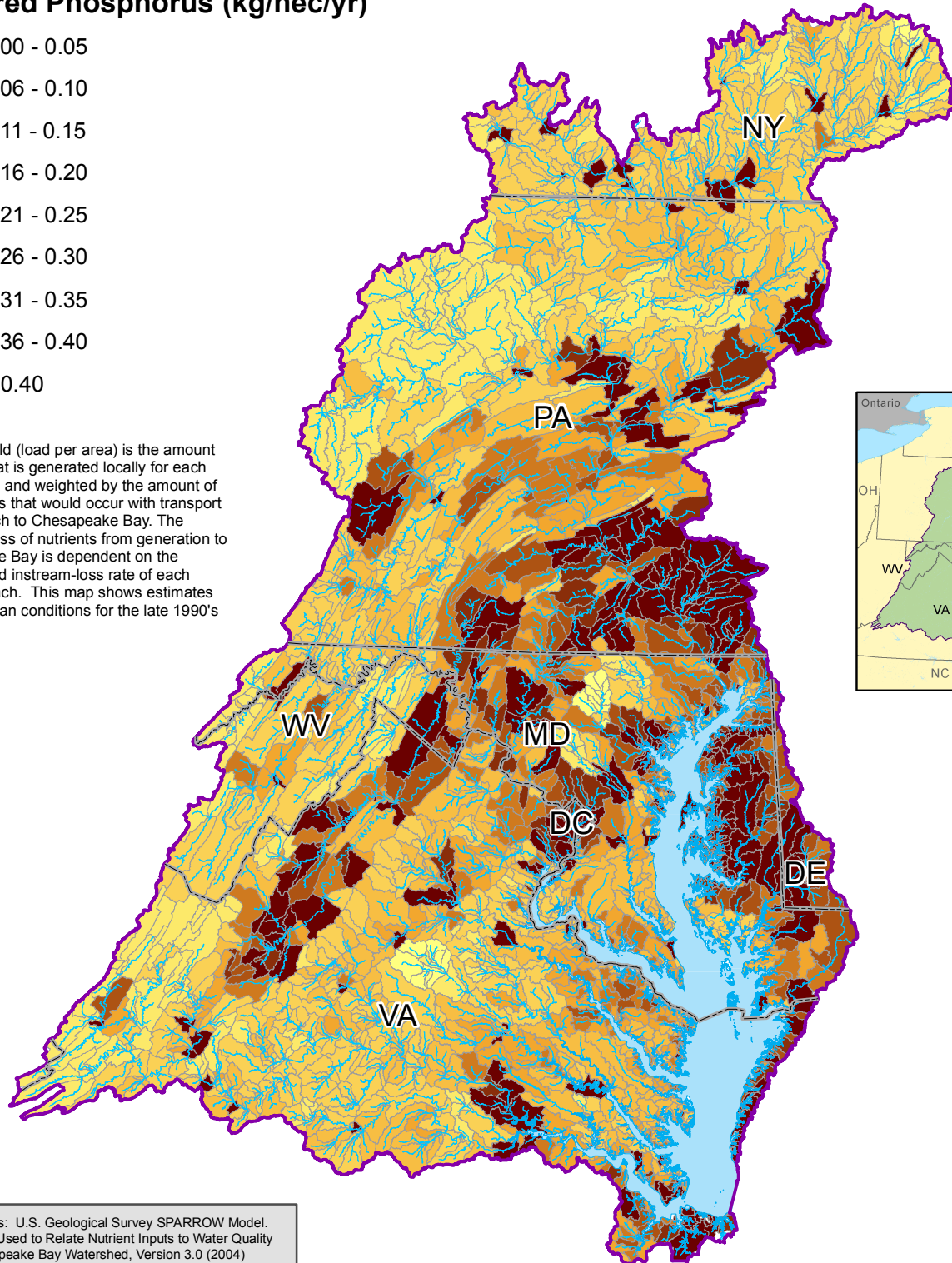
Delivered Yield to the Chesapeake Bay



Delivered Phosphorus (kg/hect/yr)



Delivered yield (load per area) is the amount of nutrient that is generated locally for each stream reach and weighted by the amount of in-stream loss that would occur with transport from the reach to Chesapeake Bay. The cumulative loss of nutrients from generation to delivery to the Bay is dependent on the traveltime and in-stream-loss rate of each individual reach. This map shows estimates based on mean conditions for the late 1990's time period.



Data Sources: U.S. Geological Survey SPARROW Model.
Digital Data Used to Relate Nutrient Inputs to Water Quality
in the Chesapeake Bay Watershed, Version 3.0 (2004)
(<http://md.water.usgs.gov/publications/ofr-2004-1433/>)

For more information, visit www.chesapeakebay.net
Disclaimer: www.chesapeakebay.net/termsofuse.htm

