

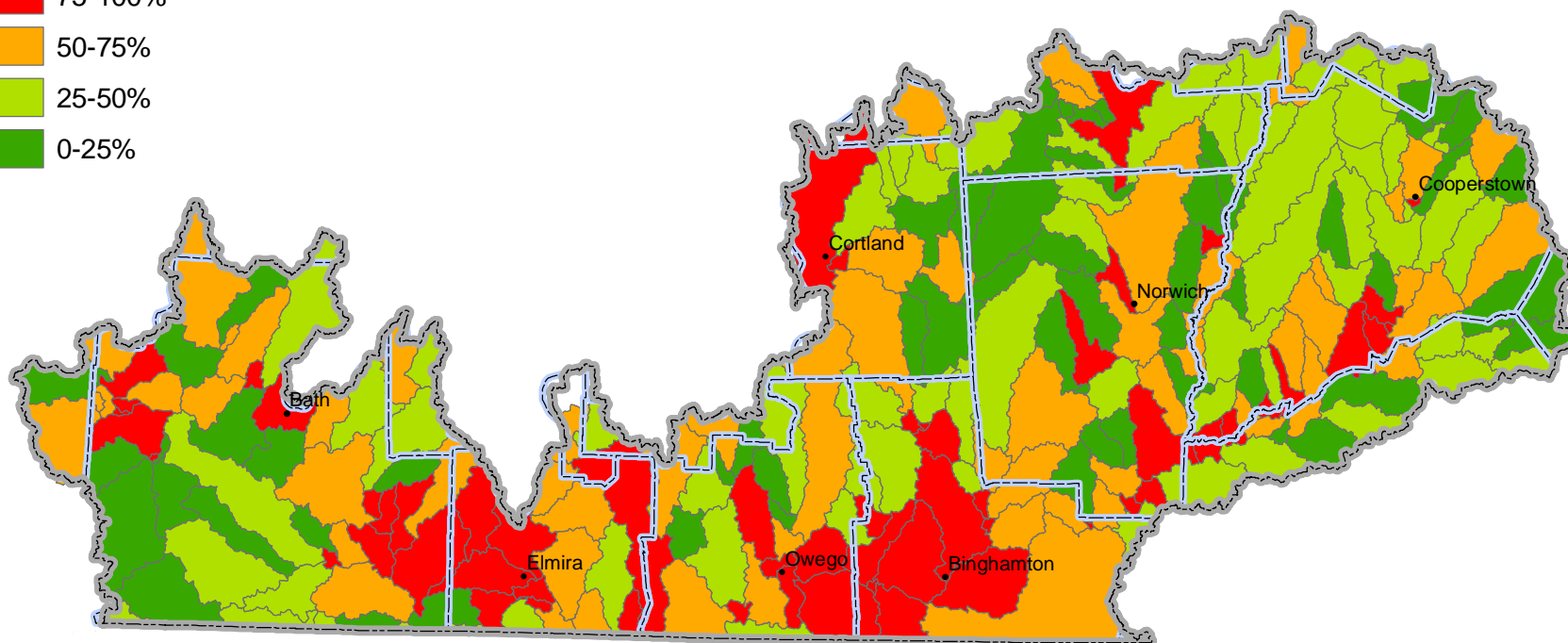
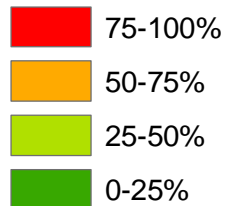
Urban Sources of Total Phosphorus

Quartile Ranking within New York



Delivered Phosphorus

Urban Sector



Data Sources: U.S. Geological Survey SPARROW Model.
Digital Data Used to Relate Nutrient Inputs to Water Quality
in the Chesapeake Bay Watershed, Version 3.0 (2004)
(<http://md.water.usgs.gov/publications/ofr-2004-1433/>)

For more information, visit www.chesapeakebay.net
Disclaimer: www.chesapeakebay.net/termsfuse.htm

Delivered yield (load per area) is the amount of nutrient that is generated locally for each stream reach and weighted by the amount of in-stream loss that would occur with transport from the reach to Chesapeake Bay. The cumulative loss of nutrients from generation to delivery to the Bay is dependent on the traveltime and instream-loss rate of each individual reach. This map shows estimates based on mean conditions for the late 1990's time period.

