









Long-Term Flow-Adjusted Concentration Trends for Suspended Sediment for 32 Sites in the Chesapeake Bay Watershed, 1985-2009

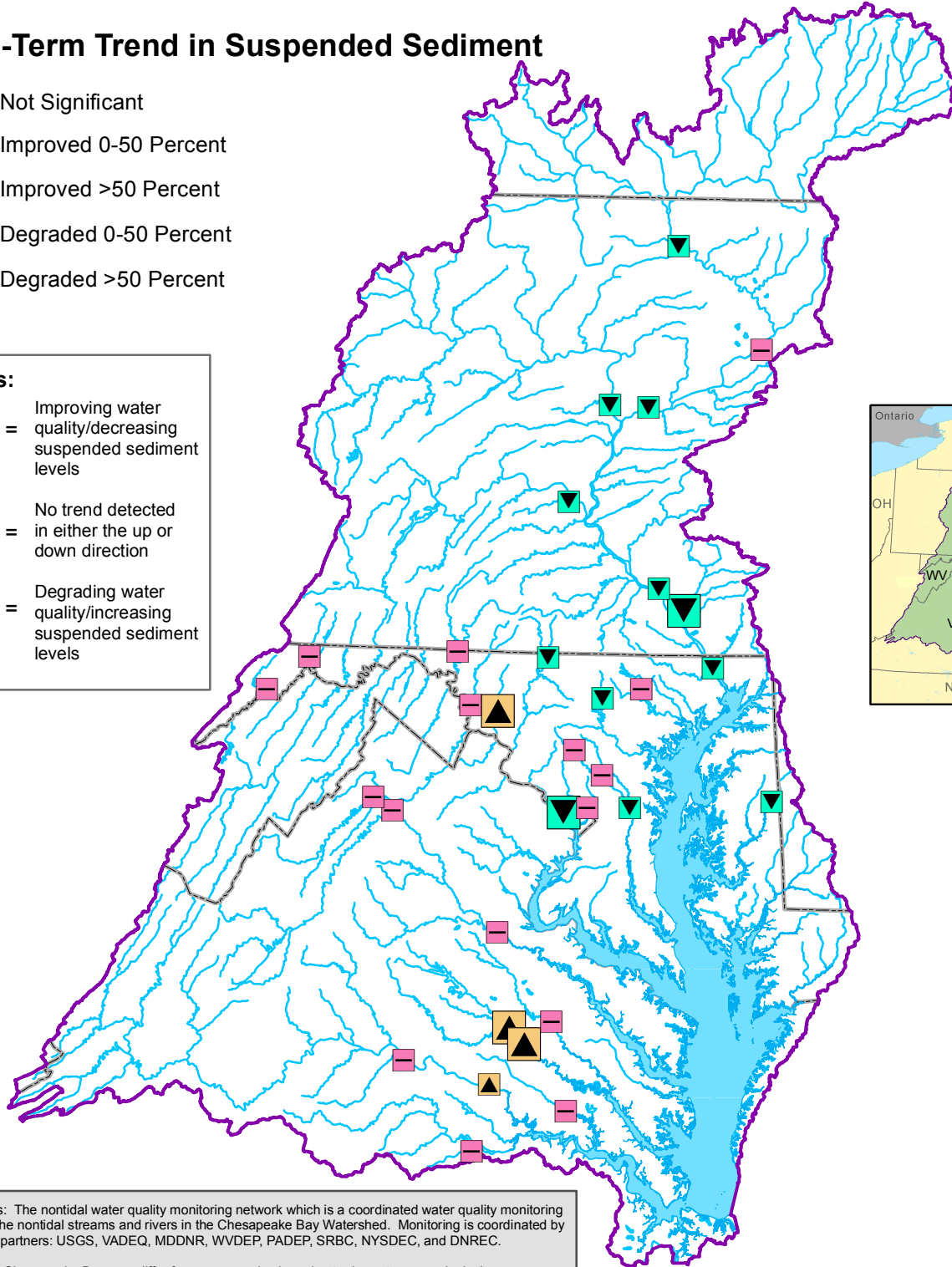


Long-Term Trend in Suspended Sediment

-  Not Significant
-  Improved 0-50 Percent
-  Improved >50 Percent
-  Degraded 0-50 Percent
-  Degraded >50 Percent

Notes:

-  = Improving water quality/decreasing suspended sediment levels
-  = No trend detected in either the up or down direction
-  = Degrading water quality/increasing suspended sediment levels



Data Sources: The nontidal water quality monitoring network which is a coordinated water quality monitoring program for the nontidal streams and rivers in the Chesapeake Bay Watershed. Monitoring is coordinated by the following partners: USGS, VADEQ, MDDNR, WVDEP, PADEP, SRBC, NYSDEC, and DNREC.

Trends in the Chesapeake Bay may differ from measured values due to downstream ecological processes. For more information on suspended sediment trends in the Bay see http://www.chesapeakebay.net/status_pollutants.aspx

For more information, visit www.chesapeakebay.net
Disclaimer: www.chesapeakebay.net/termsfuse.htm

