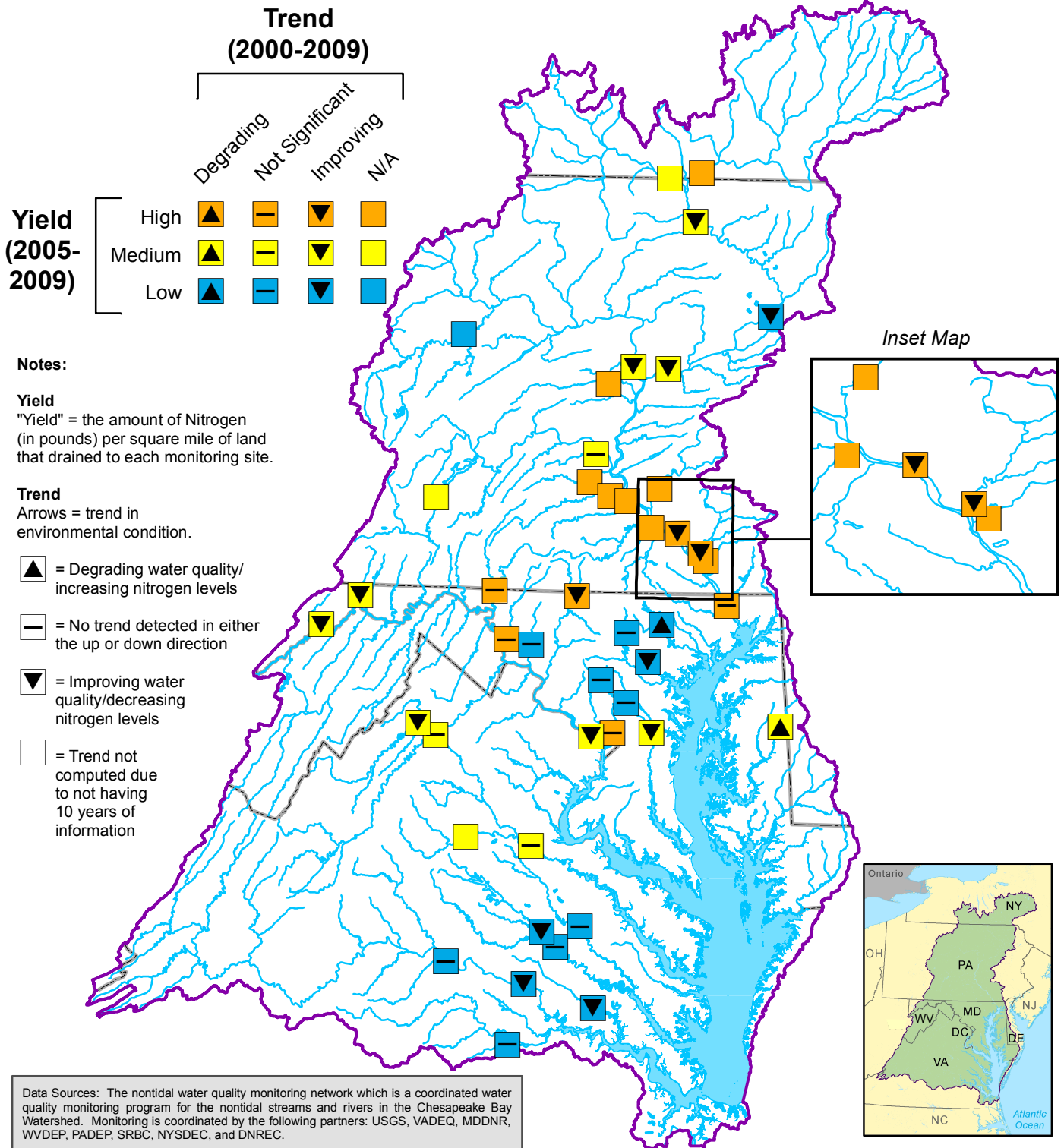


Nitrogen Yields and Short-Term Trends Measured in Watershed Streams and Rivers



Data Sources: The nontidal water quality monitoring network which is a coordinated water quality monitoring program for the nontidal streams and rivers in the Chesapeake Bay Watershed. Monitoring is coordinated by the following partners: USGS, VADEQ, MDDNR, WVDEP, PADEP, SRBC, NYSDEC, and DNREC.

Yields delivered to Chesapeake Bay may differ from measured values due to downstream ecological processes. For more information on Nitrogen yields delivered to the Bay see http://www.chesapeakebay.net/status_pollutants.aspx

For more information, visit www.chesapeakebay.net
Disclaimer: www.chesapeakebay.net/termsofuse.htm

