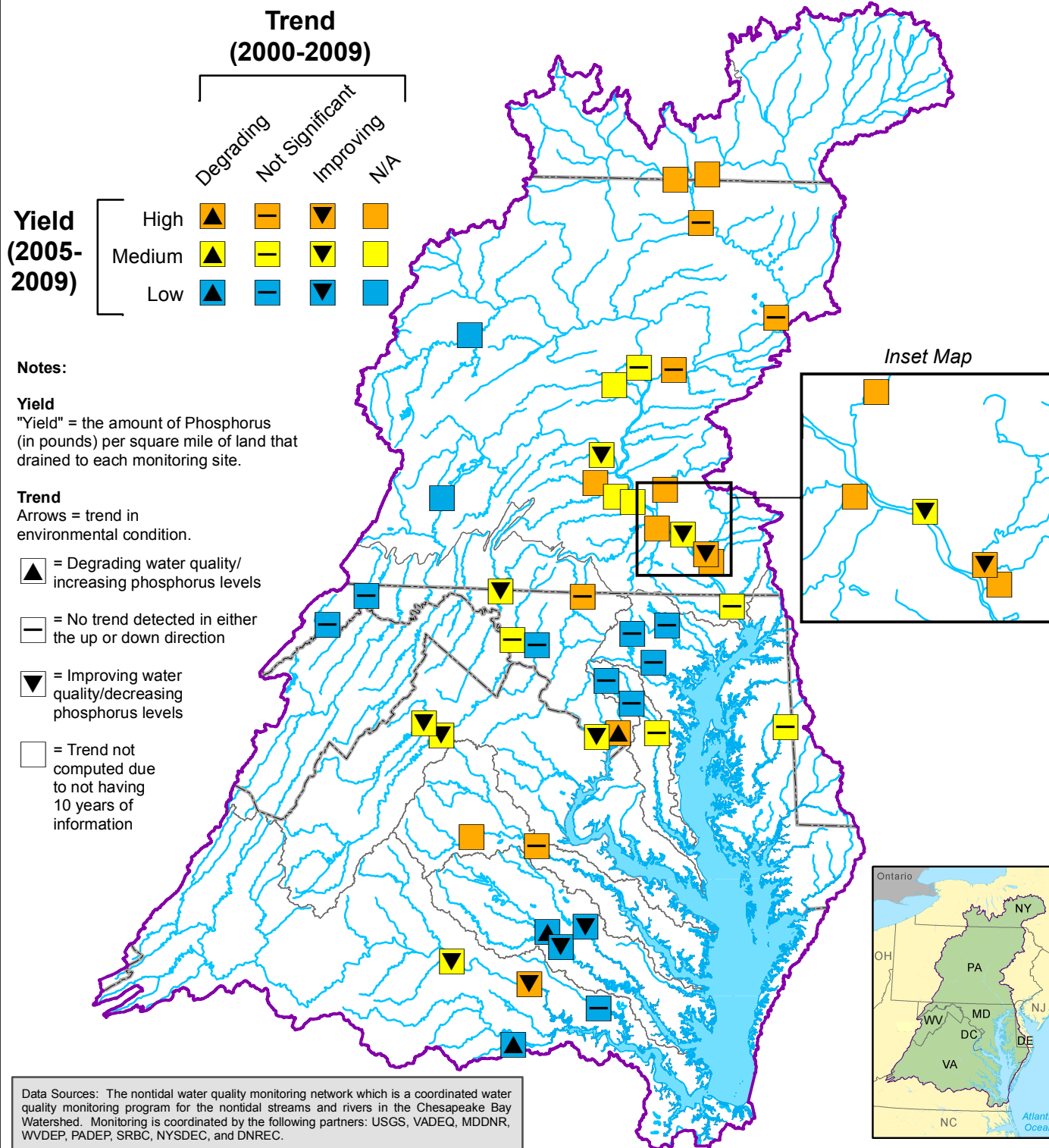


# Phosphorus Yields and Short-Term Trends Measured in Watershed Streams and Rivers



Data Sources: The nontidal water quality monitoring network which is a coordinated water quality monitoring program for the nontidal streams and rivers in the Chesapeake Bay Watershed. Monitoring is coordinated by the following partners: USGS, VADEQ, MDDNR, WVDEP, PADEP, SRBC, NYSDEC, and DNREC.

Yields delivered to Chesapeake Bay may differ from measured values due to downstream ecological processes. For more information on Phosphorus yields delivered to the Bay see [http://www.chesapeakebay.net/status\\_pollutants.aspx](http://www.chesapeakebay.net/status_pollutants.aspx)

For more information, visit [www.chesapeakebay.net](http://www.chesapeakebay.net)  
Disclaimer: [www.chesapeakebay.net/termsofuse.htm](http://www.chesapeakebay.net/termsofuse.htm)

