

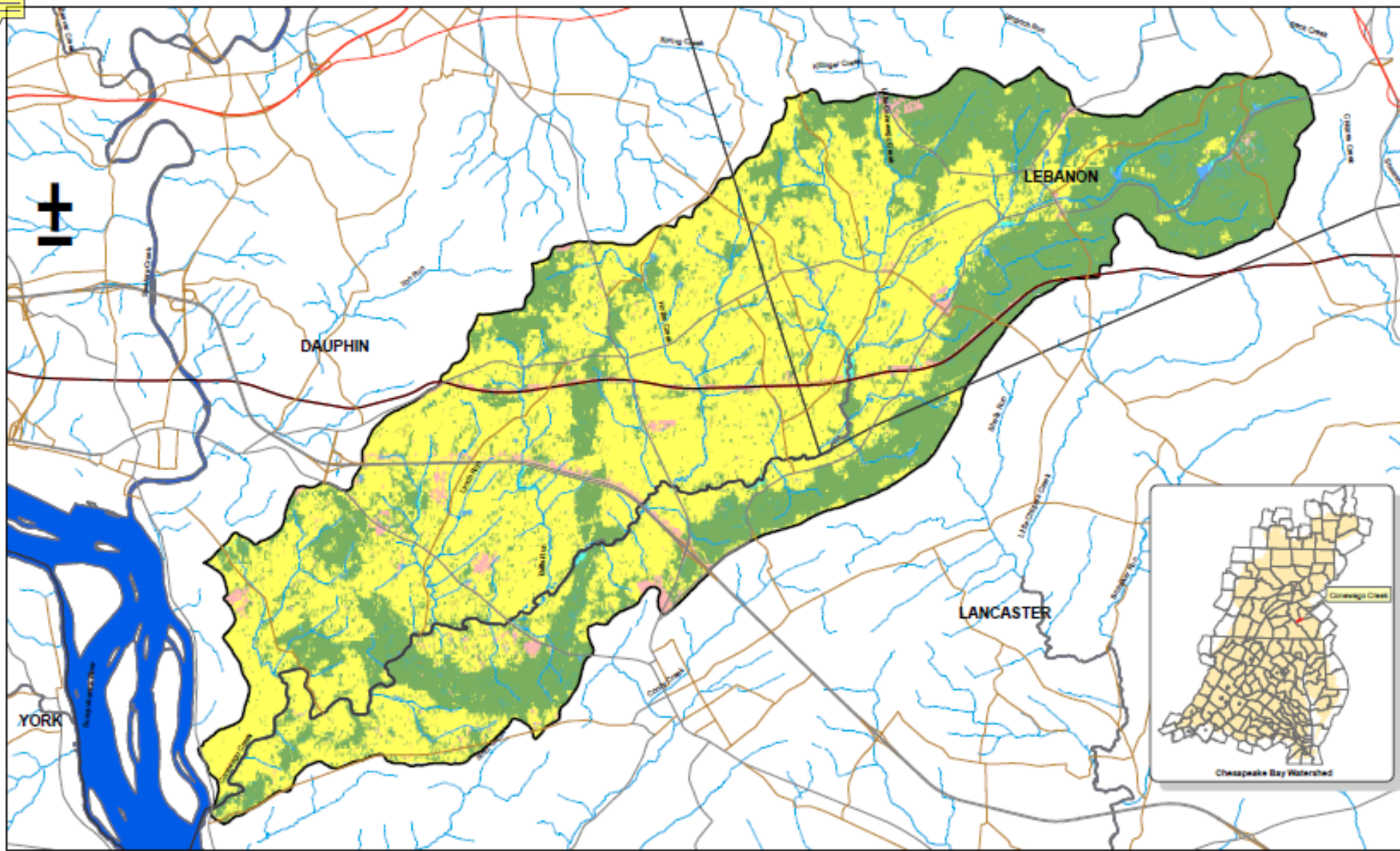
THE CONEWAGO CREEK INITIATIVE

Community working together for a restored Conewago.



www.conewagoinitiative.net

The Conewago Creek Initiative is made possible by a grant from the National Fish and Wildlife Foundation to Penn State Extension and the contributions of the Initiative's many partners.



Conewago Creek Watershed

- Legend**
- Coverage
 - Counties
 - Interstate Hwy
 - US Hwy
 - PA Hwy
 - Stream - Identified
 - Stream - Potential
 - Reservoir
 - water
 - low density urban
 - agriculture
 - forest
 - wetland
 - pasture
 - transitional

0 0.5 1 2 Miles

Map produced by the Land Analysis Laboratory, Department of Crop and Soil Sciences, College of Agricultural, Biological and Environmental Sciences
 Data Sources: USGS National Hydrography Data, 2007; Pennsylvania Land Use Land Cover
 Coordinate System: The State Plane, North Zone, NAD 83

The Conewago Initiative



- LOCAL

- Conservation Districts – Dauphin, Lancaster, Lebanon
- Tri-County Conewago Creek Association
- Municipalities – S. Londonderry Township
- Elizabethtown College
- Residents

- STATE

- Penn State
- PA DEP
- NRCS – PA
- Chesapeake Bay Foundation
- PDA
- PA DCNR



- NATIONAL

- USDA NRCS
- US EPA
- National Fish & Wildlife Foundation
- SRBC
- USGS
- USDA ARS

- PRIVATE SECTOR

- ZedX
- LandStudies
- Tetra Tech
- Wild Resources, Inc.



THE CONEWAGO CREEK INITIATIVE

Community working together for a restored Conewago.

- Increasing community outreach and engagement.
- Helping to implement BMPs.



- Monitoring the results.



THE CONEWAGO CREEK INITIATIVE

Increasing community outreach and engagement.

- Over 100 community members create “Vision for the Conewago” and an action plan to get there.
- Watershed breakfast and conservation tour July 28.



Conewago Creek Watershed Community

A VISION FOR THE
CONEWAGO CREEK WATERSHED



January 2011

THE CONEWAGO CREEK INITIATIVE

Helping to implement BMPs.

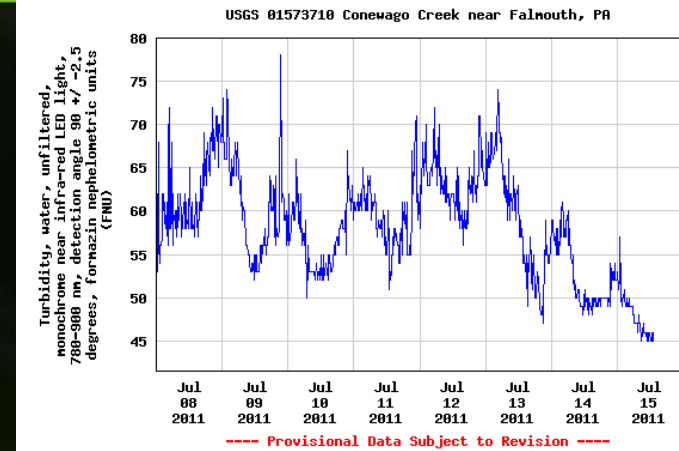


- In Initiative's first two years:
 - 1,200 acres of no till
 - 5,000 feet of fencing
 - 31 acres of forest buffers
 - 2,400 feet of diversions
 - 21,000 feet of terraces
 - 45 conservation plans written
- Stormwater assessment and prioritization work completed (Tetra Tech).
- Stormwater planning and incentives program launched.

THE CONEWAGO CREEK INITIATIVE

Monitoring the results.


- 2 new USGS gage stations.
- Monitoring plan developed and being implemented.
- June 28 fish survey:
 - Total number species jumped from 12 to 21 (2007 to 2012).
 - Total intolerant species jumped from 0 to 3 (2007 to 2012).





THE CONEWAGO CREEK INITIATIVE

www.conewagocreek.net



The Conewago Watershed Community has envisioned a future that establishes the restored Conewago and its tributaries as a centerpiece of pride and a treasured asset in a rural landscape.

This vision includes a strong agricultural community and productive farmland, community recreation areas, and vibrant, well planned communities. Pristine landscapes will be protected while providing sustainable uses of natural resources, clean water and streams, and educational opportunities for generations to come.