



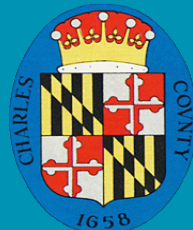
Mallows Bay-Potomac River National Marine Sanctuary

<http://sanctuaries.noaa.gov/mallows-bay>

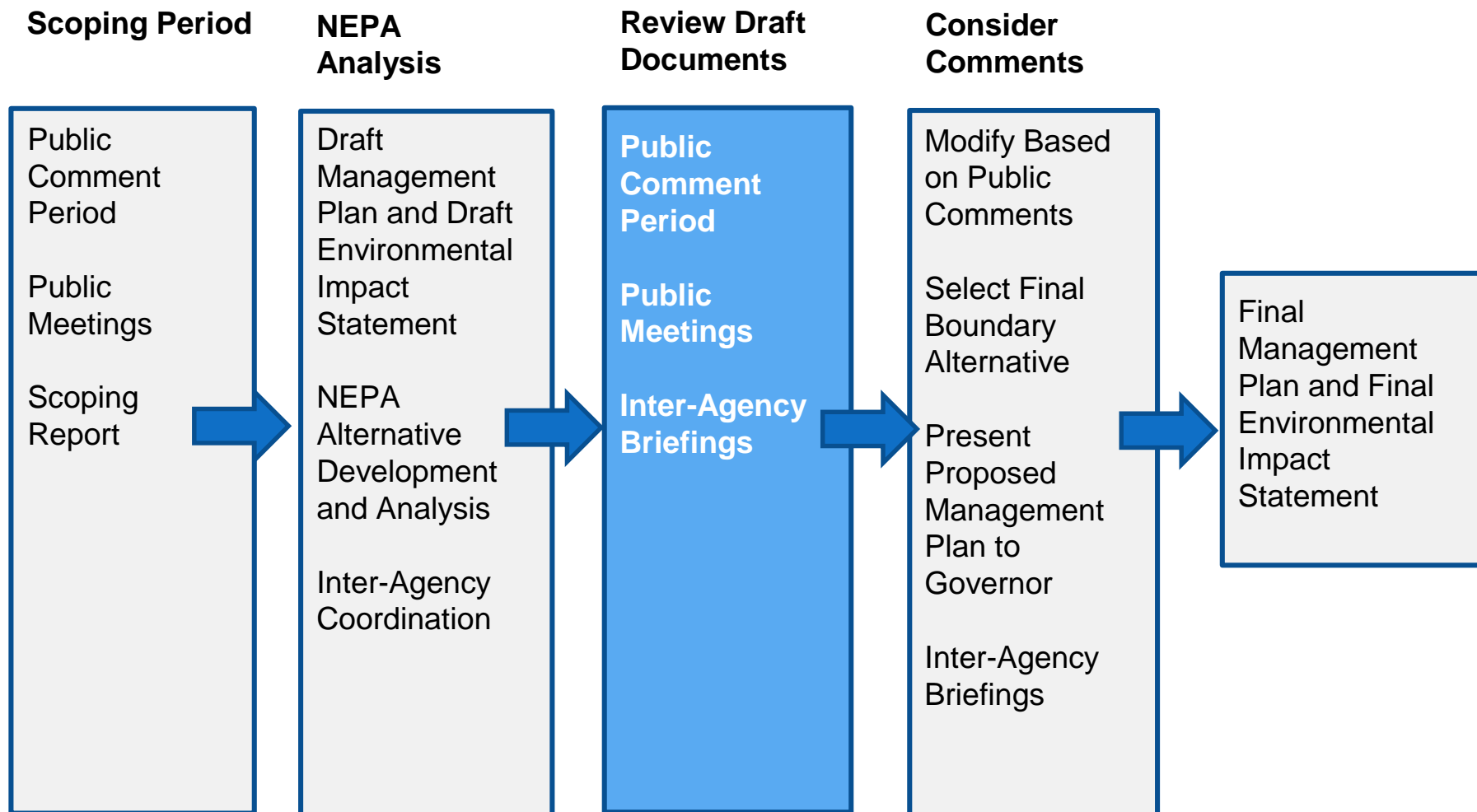


Sammy Orlando

NOAA Office of National Marine Sanctuaries



The Sanctuary Designation Process



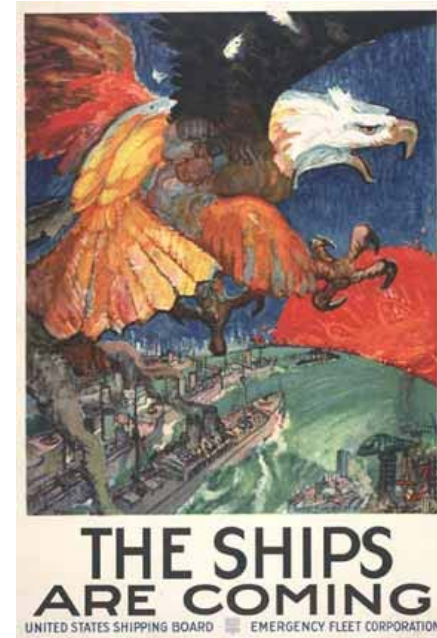
Input from Public Scoping

Clear Public Endorsement for Sanctuary Purpose and Programs

- Resource Protection (History and Heritage) and Interpretation
- Recreation/Tourism and Local Economic Opportunity
- Education and Public Engagement
- Science and Advanced Technologies

Additional Considerations

- Boundary Expansion
 - Include additional maritime/cultural/historic resources
 - Expand public access
 - Role of ships and maritime assets as critical habitat
- Retain Potomac River in Sanctuary name
- No adverse impact on recreational and commercial fishing
- No adverse impact on recreational fossil collection
- No adverse impact on local business and land use planning
- Support for visitor center and/or educational facility
- Designation by April 2017 to coincide with WWI Centennial



Draft Environmental Impact Statement

Office of National Marine Sanctuaries
National Oceanic and Atmospheric Administration



Proposed Mallows Bay – Potomac River National Marine Sanctuary Designation

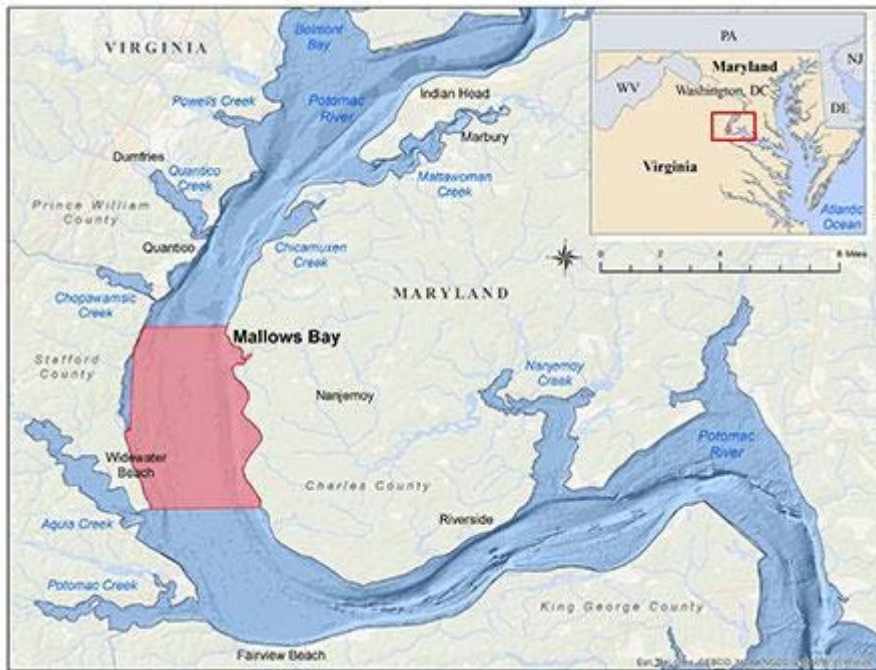
Draft Environmental Impact Statement and
Draft Management Plan



- **States purpose of and need for sanctuary:**
 - 1) resource protection of maritime heritage resources**
 - 2) facilitating public access**
- Evaluates a range of options – regulatory and non-regulatory - for achieving the purpose and need
- Defines a preferred alternative
- Evaluates environmental and social consequences of the preferred alternative
- Provides the proposed management arrangement and priority programs

Draft Environmental Impact Statement

Alternative B



Resources Present:

- 118 WWI-era U.S. Emergency Fleet Corporation steamships;
- MD Indian Tribes heritage sites;
- Remains of historic fisheries operations such as sturgeon and caviar industries, Revolutionary and Civil War battle sites.

Boundaries: Boundaries coincide with the Malloys Bay Widewater Historical and Archeological National Register District

Approximate Total Area (sq. mi.): 18

Public Access

- 3 parks - Malloys Bay Park, Purse State Park, Widewater State Park
- 6 miles of shoreline

Draft Environmental Impact Statement

Alternative C (NOAA's preferred alternative)

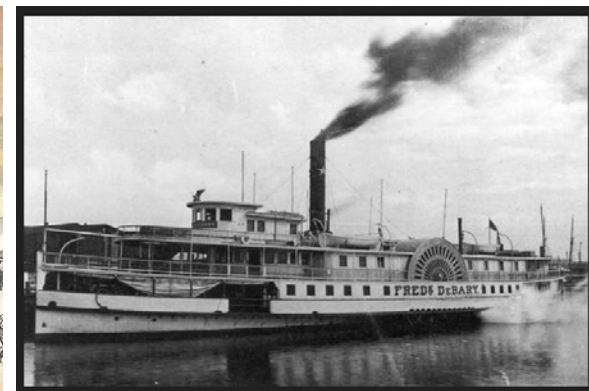
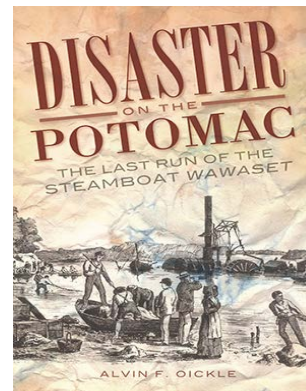
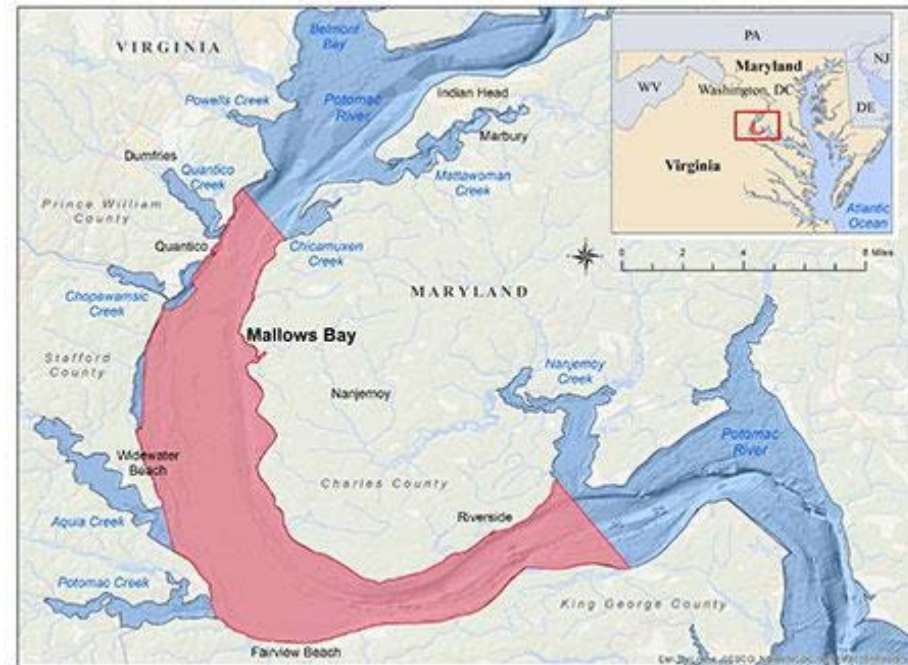
Resources Present:

- Includes Alternative B shipwrecks plus
- 2 additional WWI steamships
- 1873 steamboat *Wawaset*
- Civil War Barge or canal boat, and up to 17 other historic shipwrecks found or identified in records
- Historically significant steamboat landings, ferry crossings, revolutionary war and civil war battle sites and remnants of the Potomac River's historic fishing industry

Public Access:

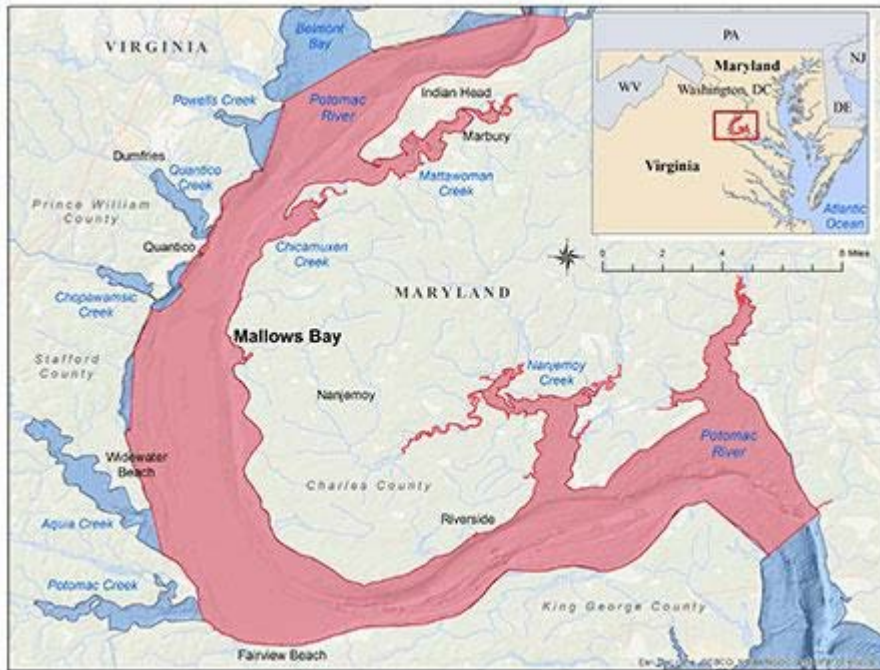
- 4 parks - adds Caledon State Park
- 14 miles of shoreline

Approximate Total Area (sq. mi.): 52



Draft Environmental Impact Statement

Alternative D



Resources Present:

- Alternative C, plus:
- Records suggest potentially 18 additional maritime assets
- Expansion of battle sites
- Water escape route for John Wilkes Booth

Public Access

- 10 parks
- 68 miles of shoreline

Approximate Total Area (sq. mi.): 100

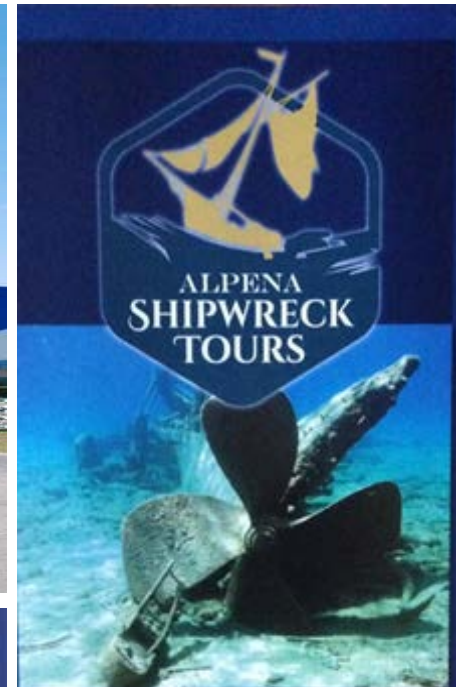
Tourism, Small Business and Economic Opportunity

The “Thunder Bay Model”



Alpena
MICHIGAN

Sanctuary of the Great Lakes



**Glass Bottom
Boat Tours**

of the
**Thunder Bay National
Marine Sanctuary**

For more information call

888-469-4696

e-mail info@alpenashipwrecktours.com
or visit alpenashipwrecktours.com

Notice of Proposed Rulemaking

Three Regulations

1. Damaging Sanctuary Resources [historic / maritime heritage]

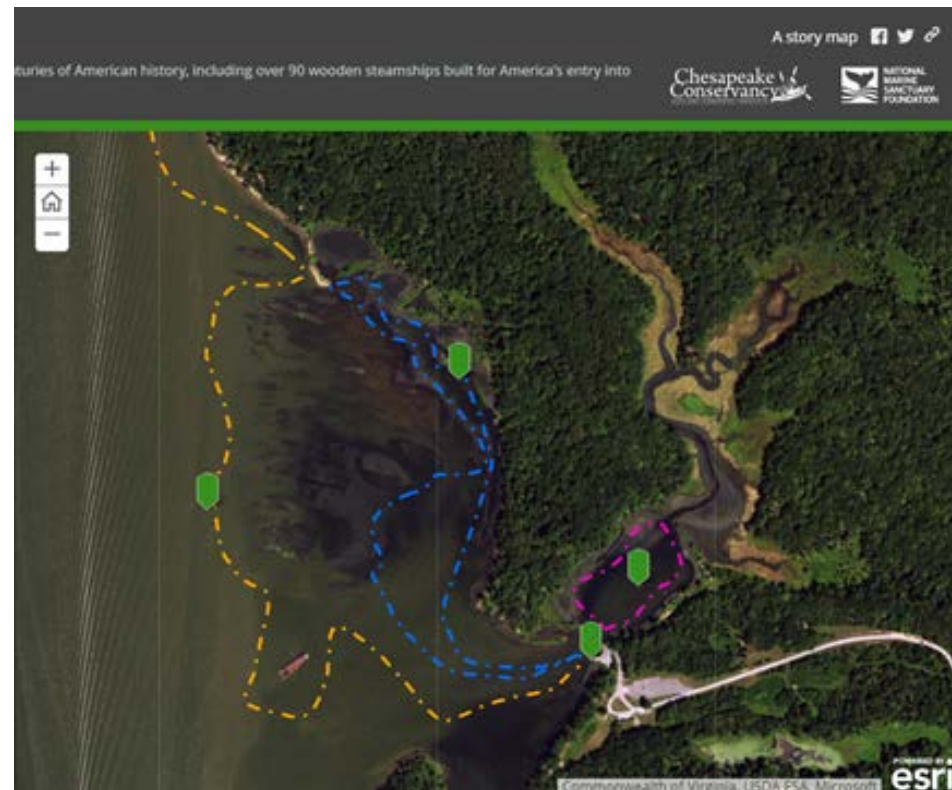
Prohibits moving, removing, recovering, altering, destroying, possessing, or otherwise injuring, or attempting to move, remove, recover, alter, destroy, possess or otherwise injure a sanctuary resource.

2. Damaging Sanctuary Signs

Prohibits damage to sanctuary signs, notices, placards, monuments, stakes, posts, buoys, or boundary markers.

3. Interfering with Investigations

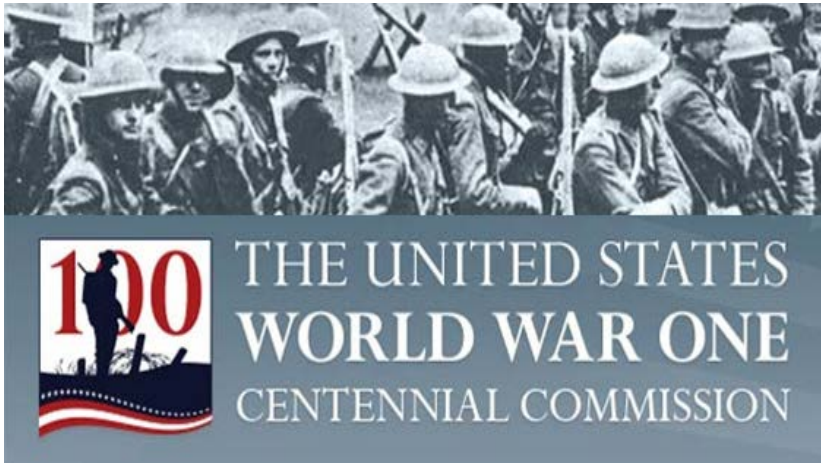
Prohibits interfering with sanctuary enforcement activities.



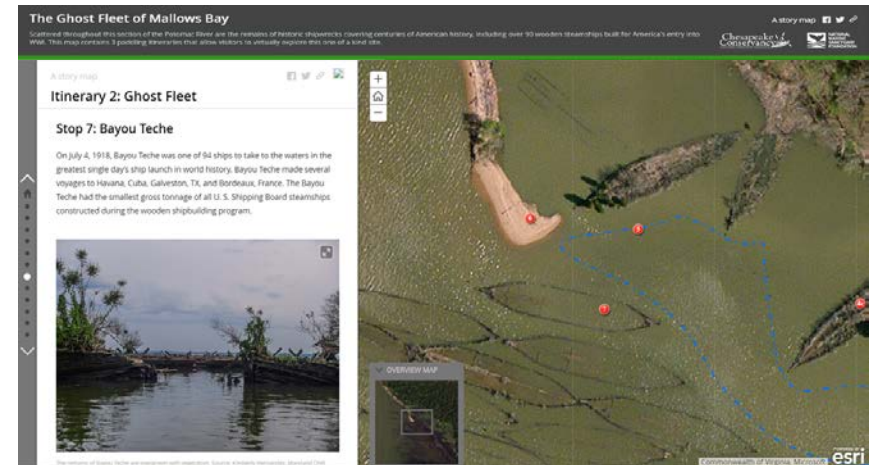
Draft Environmental Impact Statement

Appendix A: Draft Management Plan

1 Protect Maritime Heritage Resources



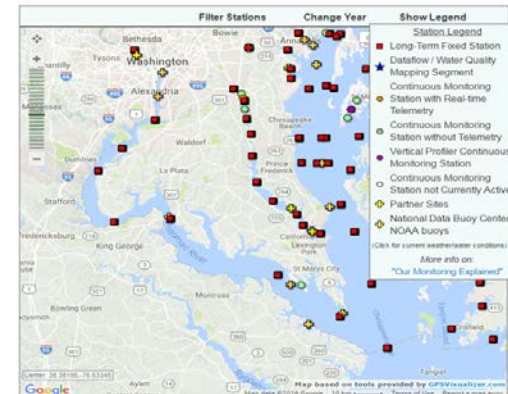
2 Enhance Recreation and Tourism



3 Strengthen Educational Opportunities



4 Promote Research, Science & Technology



Appendix A: Draft Management Plan

Sanctuary Operations: Co-Management



- Managed cooperatively by NOAA, State of Maryland and Charles County, MD
- Recreational and commercial fishing would continue, as before, through management by MD DNR and Potomac River Fisheries Commission
- All other recreational uses, including hunting, fossil collecting, birding, wildlife viewing, boating and paddling would continue, as before, through management by MD DNR or other local authorities
- Archaeological research will continue, as before, by permit from MD Historical Trust



Photo: Chris O'Haver



Photo: MD DNR



PRFC



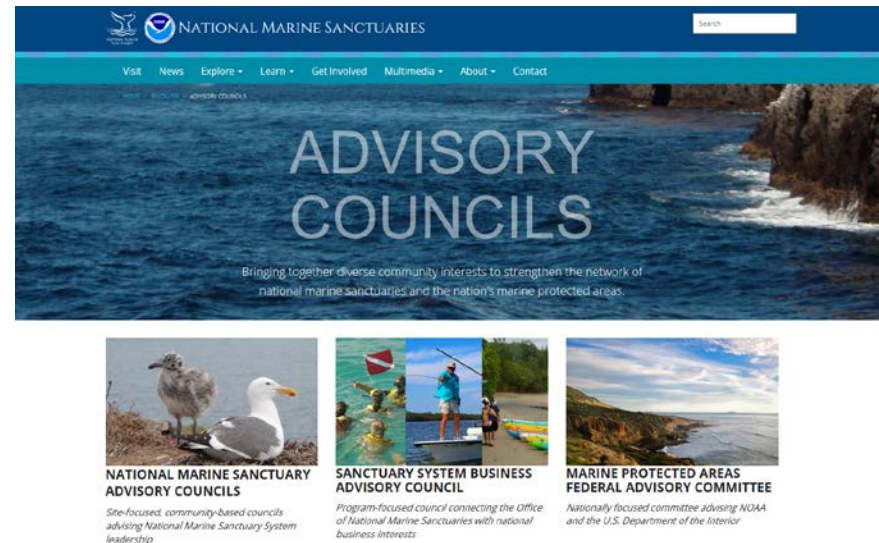
Potomac River Fisheries Commission

Appendix A: Draft Management Plan

Sanctuary Operations: Sanctuary Advisory Council

An Ongoing Partnership with the Community

- 15 members who advise the sanctuary superintendent on the operation of a national marine sanctuary.
- Members typically include conservation, fishing, recreation, education, boating and shipping, business, maritime heritage, research, and jurisdictional partners from local, regional, state, tribal, territorial and federal agencies, citizen-at-large, and/or youth



We Want to Hear From You!

www.regulations.gov
NOAA-NOS-2016-0149

NOAA is soliciting comments:

Draft Environmental Impact Statement

Draft Management Plan

Draft Notice of Proposed Rule

Sanctuary Name

ON-LINE
Until March 31, 2017

Public Meetings (6:00p-9:00p)

Date: March 7, 2017

Location: Charles County Government Building

Date: March 9, 2017

Location: Anne Arundel Community College

<http://sanctuaries.noaa.gov/mallows-bay>