

Linking Conservation Tools and Data with Financing Opportunities



STRATEGY DISCUSSION

**CHRISTINE CONN
HABITAT GIT CO-CHAIR**

Overview



- **DECISION SUPPORT TOOLS**
 - **SPATIAL PRIORITIES**
 - **LANDSCAPE SCALE CONSERVATION/RESTORATION PLANNING**
- **SURPLUS OF TOOLS AVAILABLE**
- **LINKING TOOLS AND DATA WITH FUNDING**
- **OPPORTUNITIES TO IMPLEMENT HABITAT RESTORATION/PROTECTION PROJECTS IN PRIORITY AREAS**

A Surplus of Tools and Data



Chesapeake Bay Program
Science. Restoration. Partnership.



WHAT WE DO

Discover the Chesapeake

Learn the Issues

State of the Chesapeake

Take Action

In the News

Who We Are

What We Do

Publications, Data & Maps

Access expert knowledge about the Chesapeake Bay and its ecosystem through publications, reports and datasets from the Chesapeake Bay Program and our partners.



Publications

Access hundreds of Bay Program publications, from scientific reports to factsheets to memorandums.



Data

Our data hub offers access to a multitude of monitoring and modeling data, past and present.

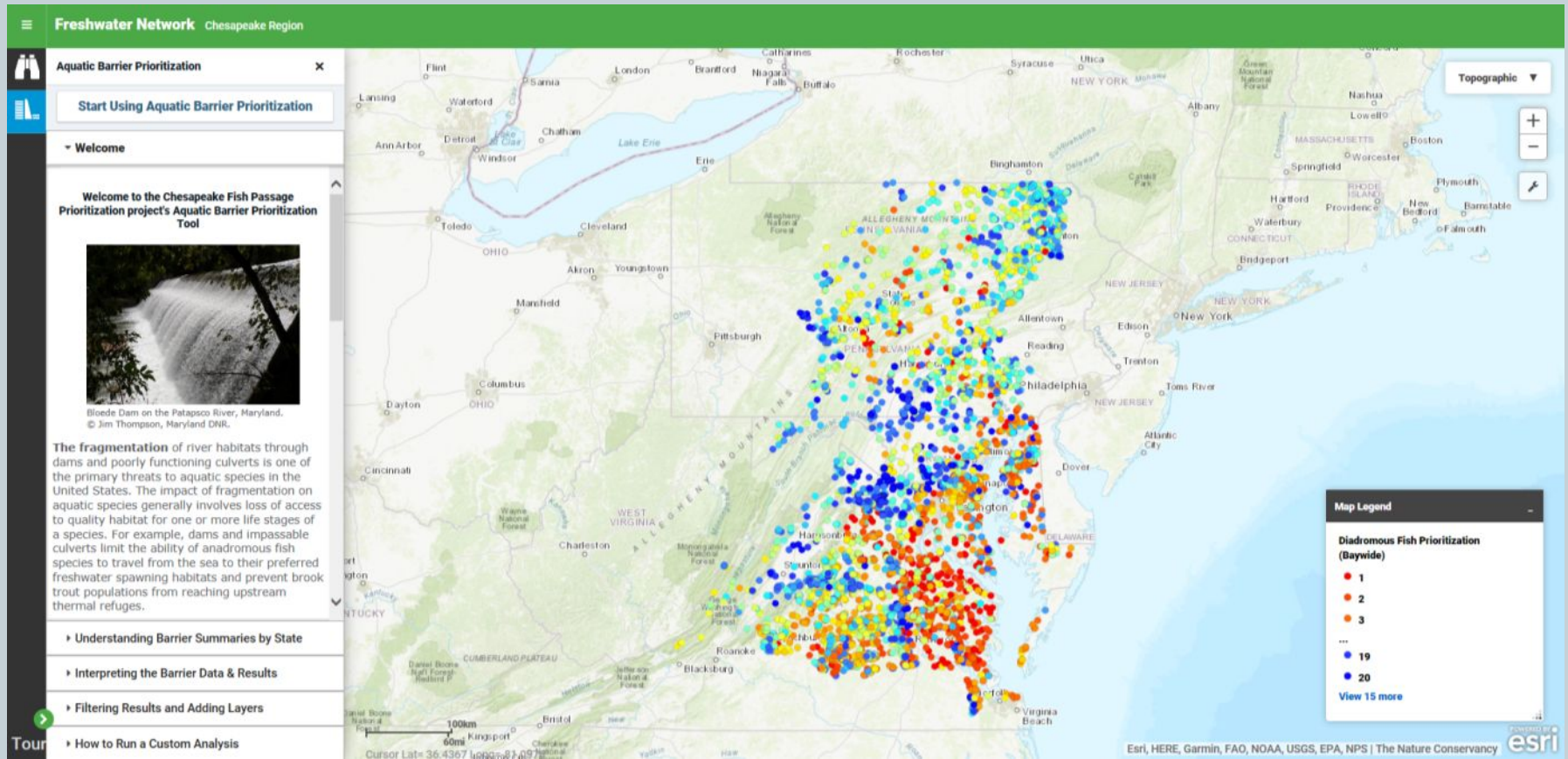


Maps

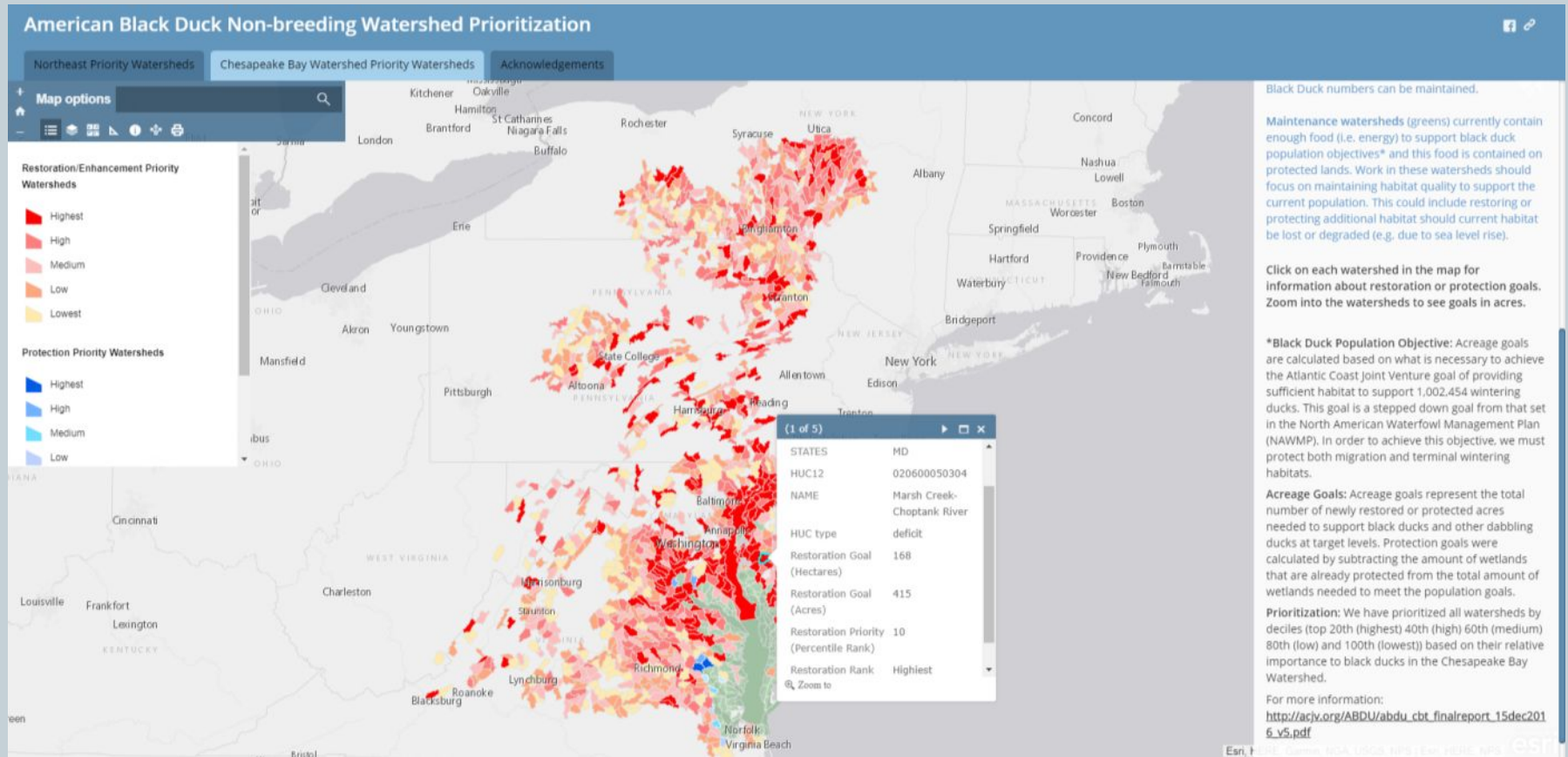
Browse through maps depicting Bay health and restoration, including pollution trends, public access sites and more.

LANGROUP.DI
Internet access

Chesapeake Bay Fish Passage Prioritization Tool



Black Duck Decision Support Tool



Brook Trout Decision Support Tools

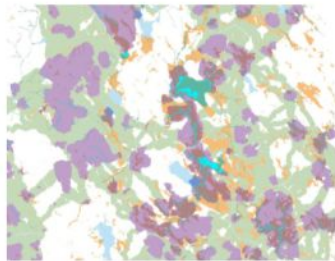


Tools and Resources

- [Eastern Brook Trout Joint Venture Spatial Tool](#): Includes information on the extent of Brook Trout habitat and habitat status.
- [State Identified Priority Brook Trout Sub-watersheds](#): Includes description, HUC12 codes, and map.
- [USFWS Fish Habitat Decision Support Tool – Chesapeake Bay Brook Trout Assessment](#): Includes information on Brook Trout habitat stressors and future habitat quality change.
- [North Atlantic Aquatic Connectivity Collaborative \(NAACC\)](#): Includes information, maps, and a regional database on road-stream crossings (bridges/culverts).
- [Chesapeake Fish Passage Prioritization Tool](#): Includes map and information on dams.

Nature's Network

USFWS North Atlantic Landscape Conservation Cooperative



Nature's Network Conservation Design

Nature's Network Conservation Design depicts an interconnected network of lands and waters that, if protected, will support a diversity of fish, wildlife, and natural resources that the people of the Northeast and Mid-Atlantic region depend upon. This map serves as the "cover page" for the Nature's Network suite of products: it outlines some of the most important natural areas in the region and provides an entry point to learn more about the information used to identify them.



Imperiled species

Providing focus on imperiled species tracked by NatureServe, including the most important habitats for 600 Species of Greatest Conservation Need (SGCN) identified by states. Endangered Species, and many species proposed for listing under the Endangered Species Act.



Terrestrial and Wetland Core-Connector Network

Connected network of intact and diverse terrestrial, wetland, and coastal systems that provide habitat for wildlife, and benefits for people, such as access to intact forests and sources of clean water.



Aquatic Core Networks

Connected network of intact and diverse aquatic systems that provide habitat for resident and anadromous fish, as well as other organisms, and benefits for people such as recreation and clean water.



Regional Connectivity and Marsh Migration

Best opportunities to maintain regional connections and connect tidal marshes to adjacent uplands.



Prioritization Tool

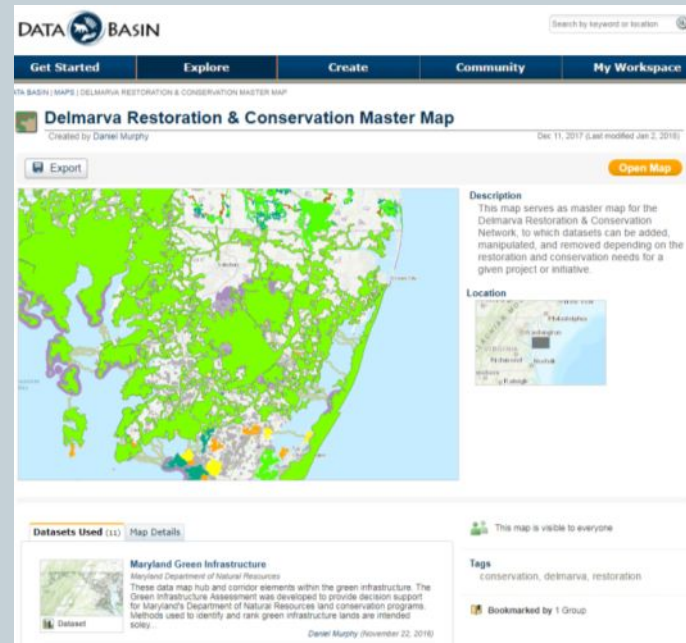
Interactive planning for conservation and restoration.

USFWS Refuge Planning

Patuxent Waters Conservation Area



Delmarva Conservation and Restoration Network



Fish Habitat Assessment User Needs Report



- Respondents interested in using a Fish Habitat decision support tool and noted use of many other tools
 - AdaptVA
 - Virginia Blue Infrastructure
 - Maryland GreenPrint
 - Maryland Coastal Atlas
 - CB Fish Passage Tool
 - Eastern Brook Trout Joint Venture
 - Nature Conservancy Habitat Prioritization Tool
 - And many more!

Linking Financing to Decision Support Tools

- NFWF 2018 Business Plan



GEOGRAPHIC FOCUS

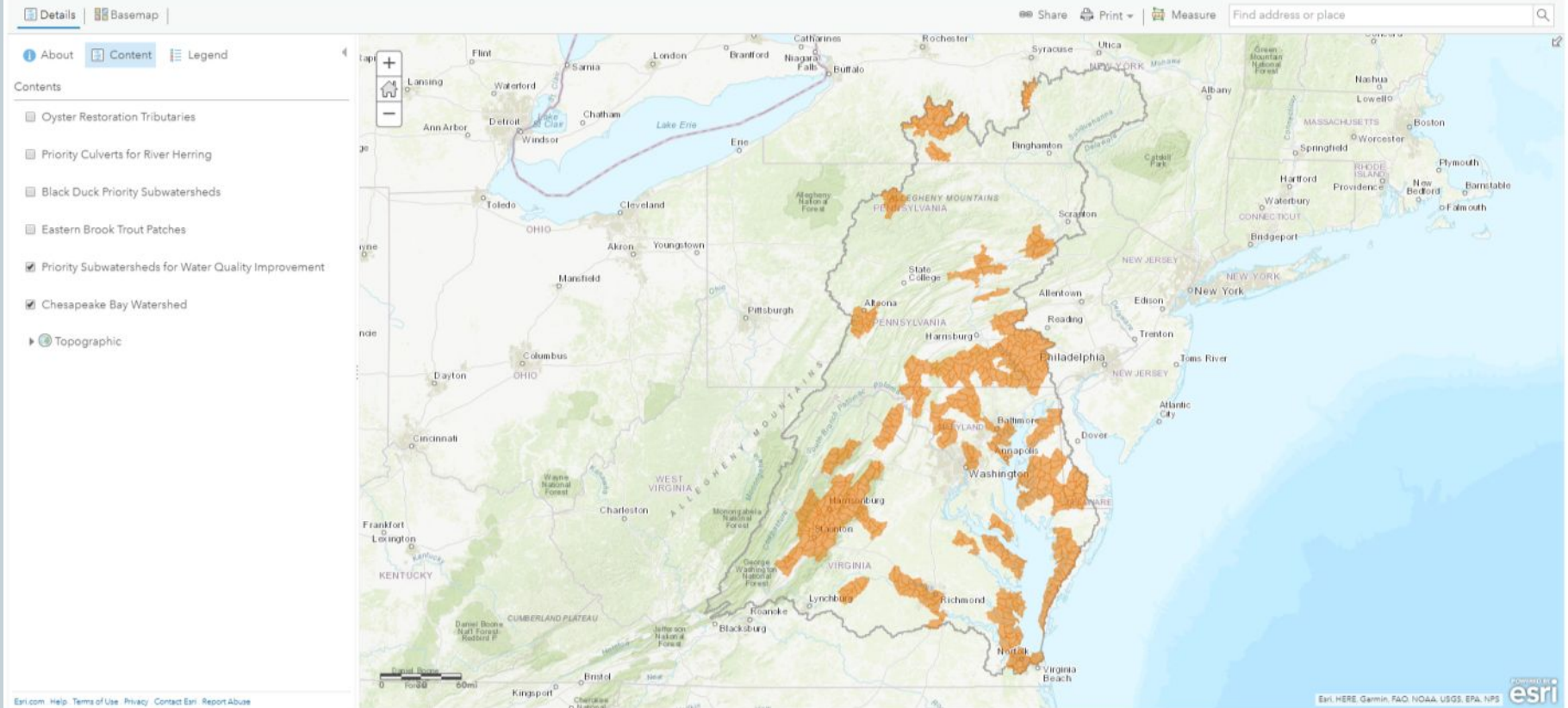
All projects must occur wholly within the Chesapeake Bay watershed. Priority consideration will be provided to projects located within priority subwatersheds or habitat units based on the unique opportunities to maximize multiple goals and outcomes for water quality, species, and habitats. Specific priority areas have been identified for each of NFWF's major focus areas for the SWG program. Applicants should consult outcome-specific geographic priorities referenced in this Request for Proposals and NFWF's online Chesapeake Bay Business Plan [mapping portal](#) to determine appropriate geographic focus areas for their proposed project activities (see Appendix A for additional guidance).

NFWF Water Quality Priorities



Home ▾ Chesapeake Bay Business Plan 2018

Modify Map & Sign In



NFWF Eastern Brook Trout Priorities



Home ▾ Chesapeake Bay Business Plan 2018

Modify Map & Sign In

Details Basemap

Share Print Measure

Find address or place

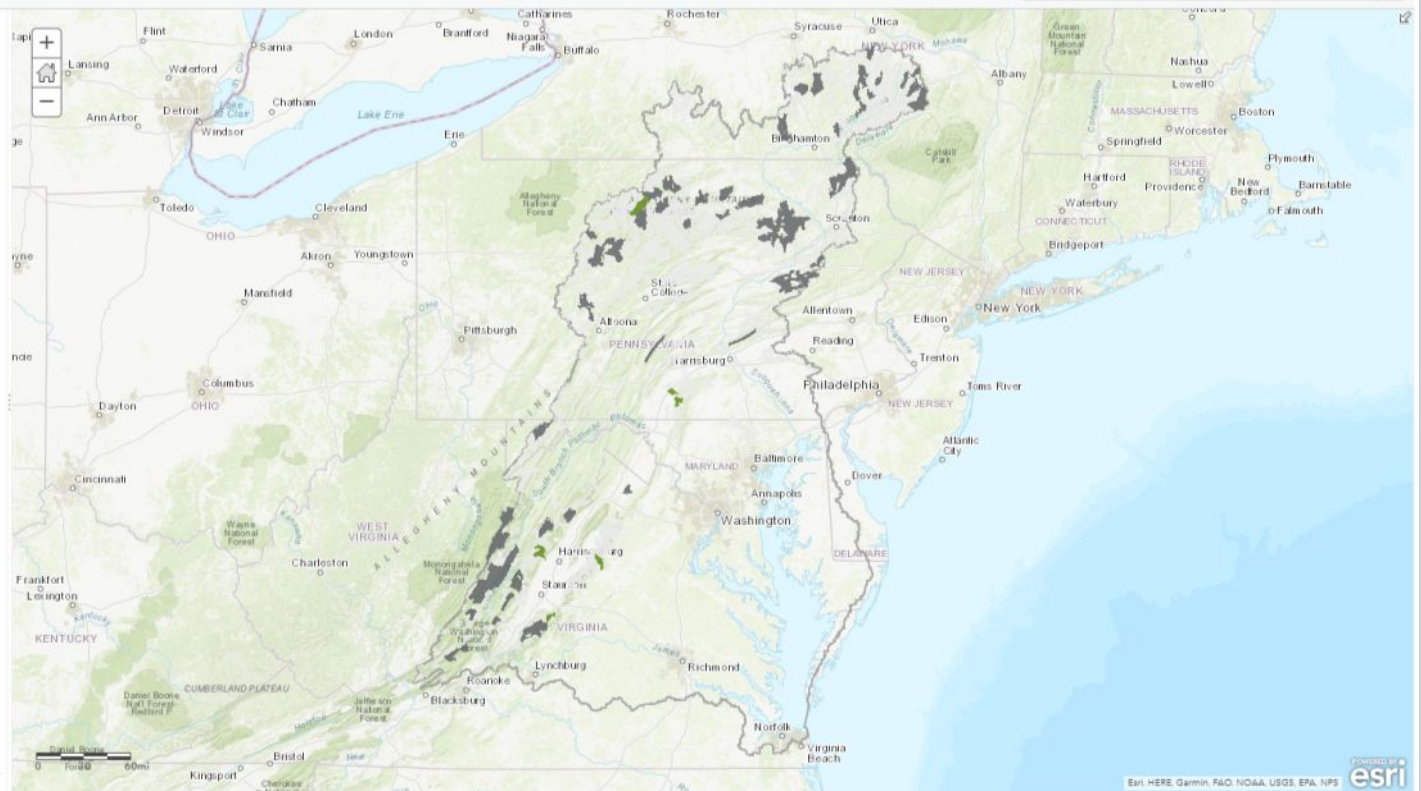
About Content Legend

Legend

Eastern Brook Trout Patches



Chesapeake Bay Watershed



Esri.com Help Terms of Use Privacy Contact Esri Report Abuse

Esri, HERE, Garmin, FAO, NOAA, USGS, EPA, NPS



NFWF Black Duck Priorities



Home Chesapeake Bay Business Plan 2018

Modify Map Sign In

Details Basemap

Share Print Measure Find address or place

About Content Legend

Legend

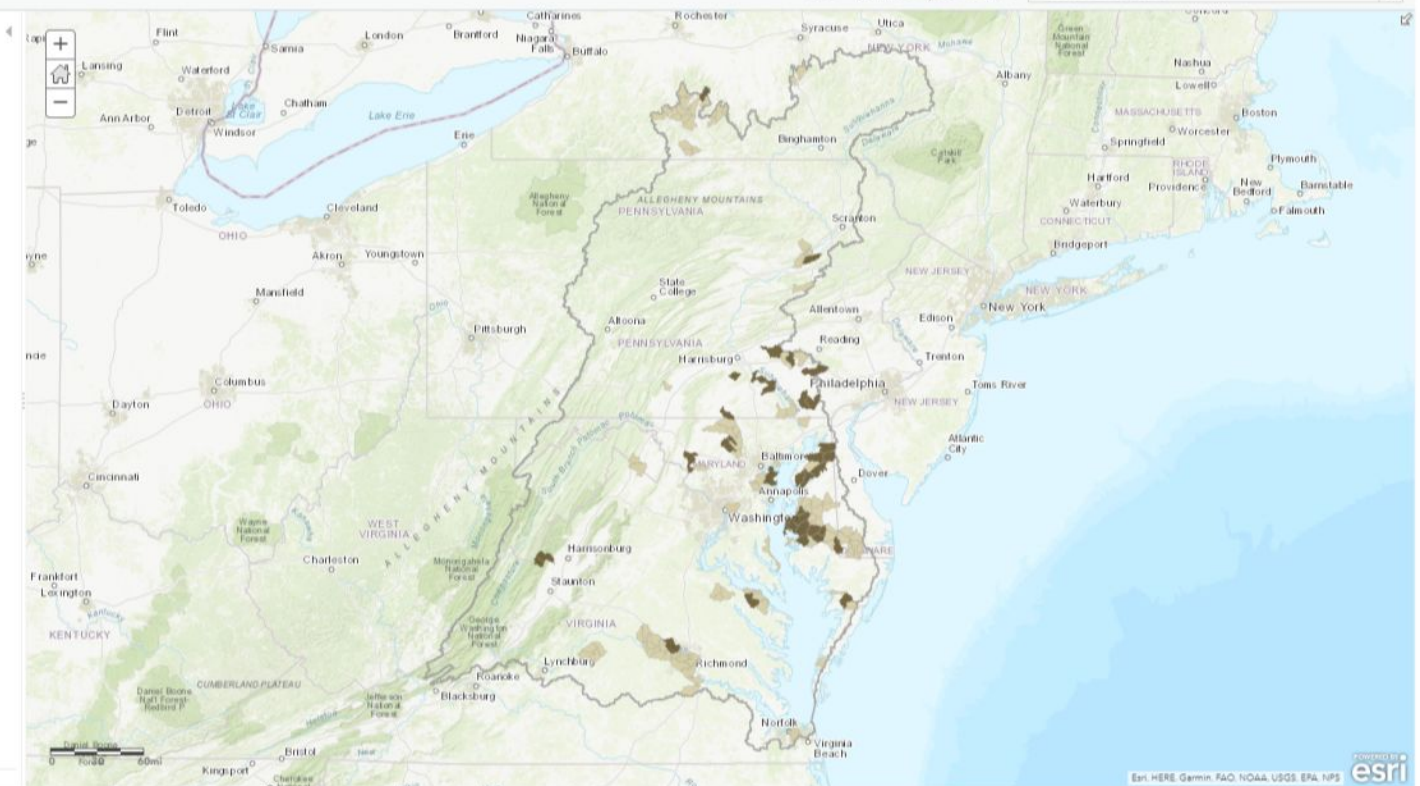
Black Duck Priority Subwatersheds

III

Tier II

Tier I

Chesapeake Bay Watershed

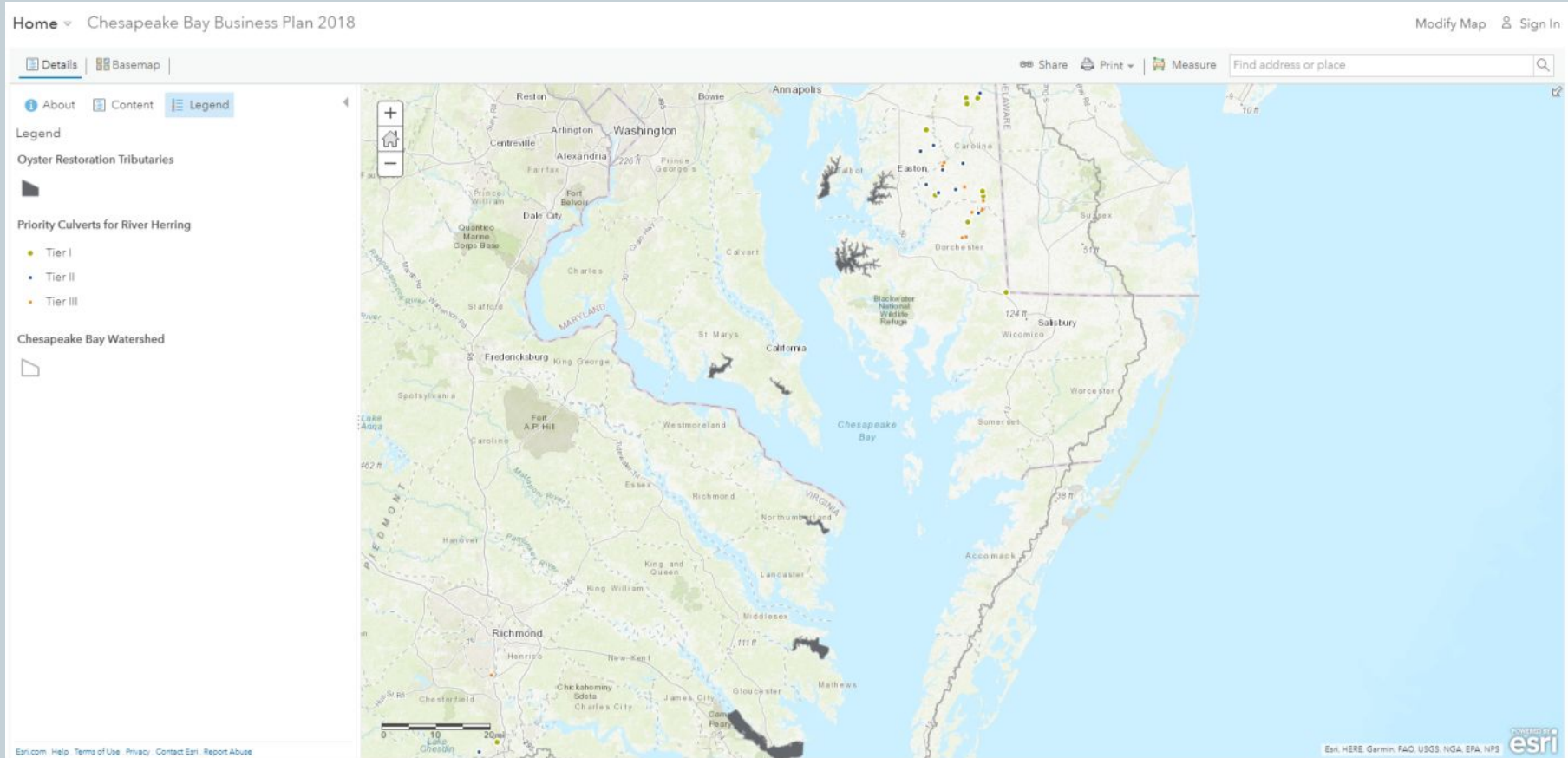


EPA.com Help Terms of Use Privacy Contact EPA Report Abuse

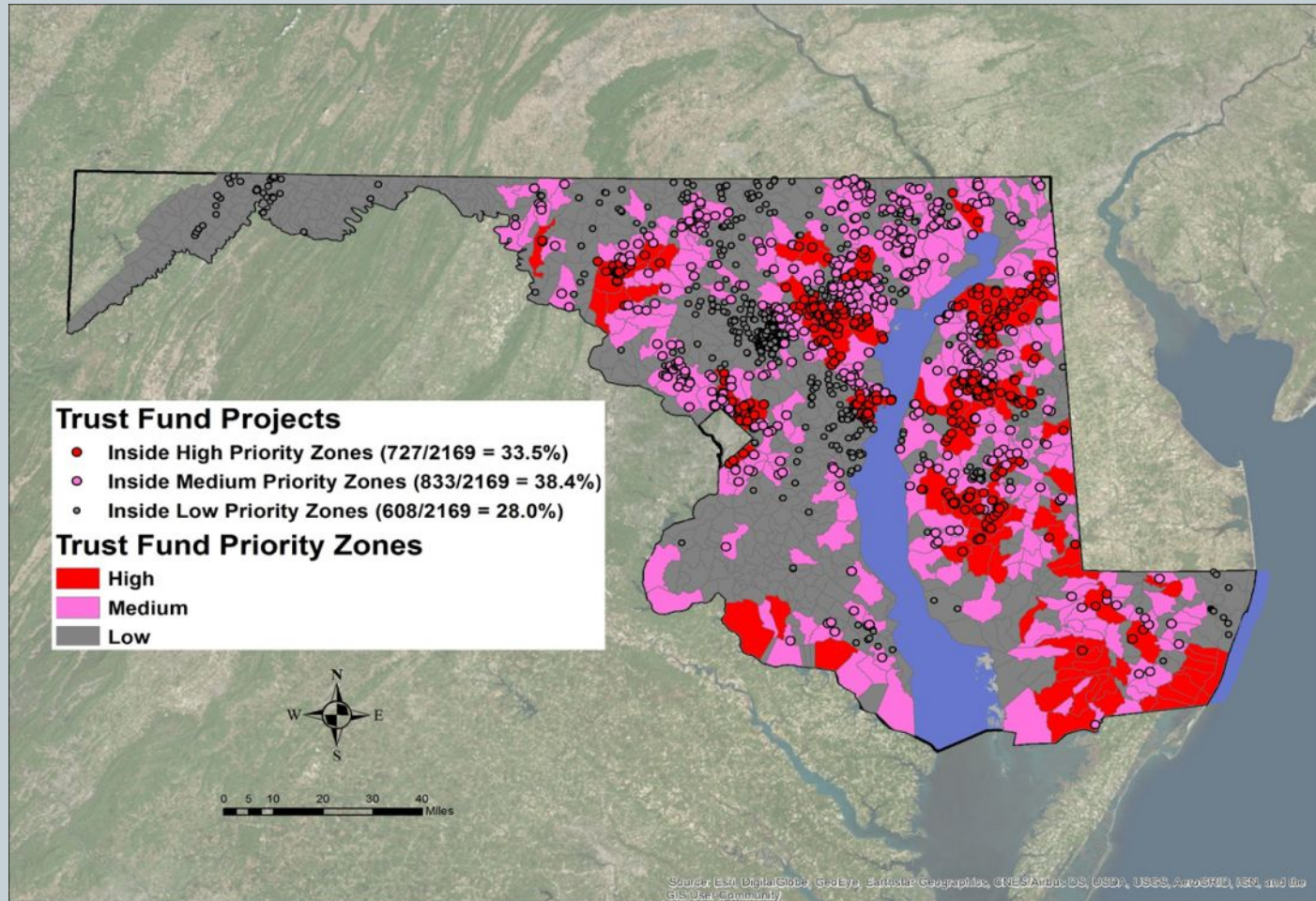
EPA HERE Garmin FAO NOAA USGS EPA NPS

powered by
esri

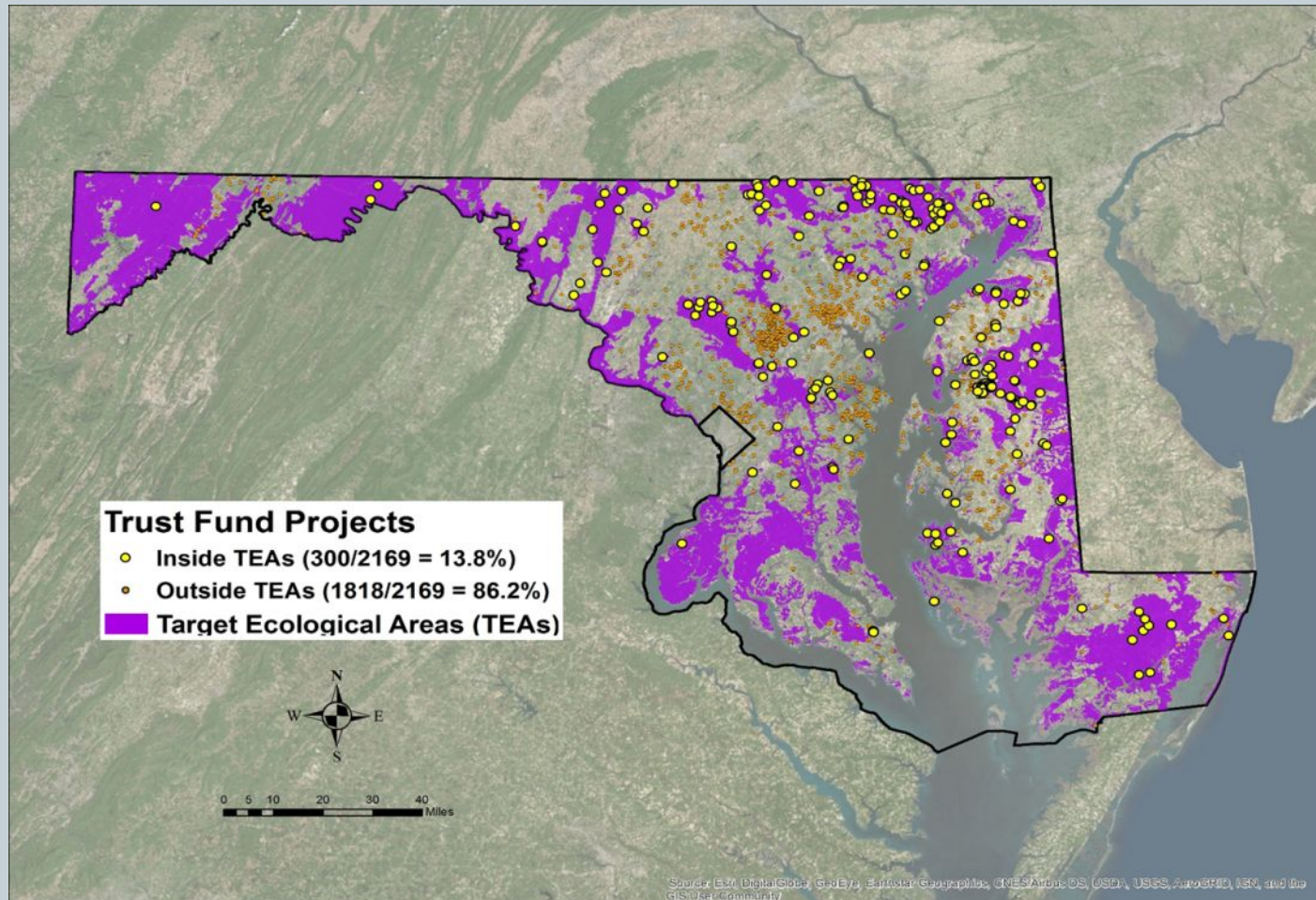
NFWF Oyster Restoration and River Herring Culvert Priorities



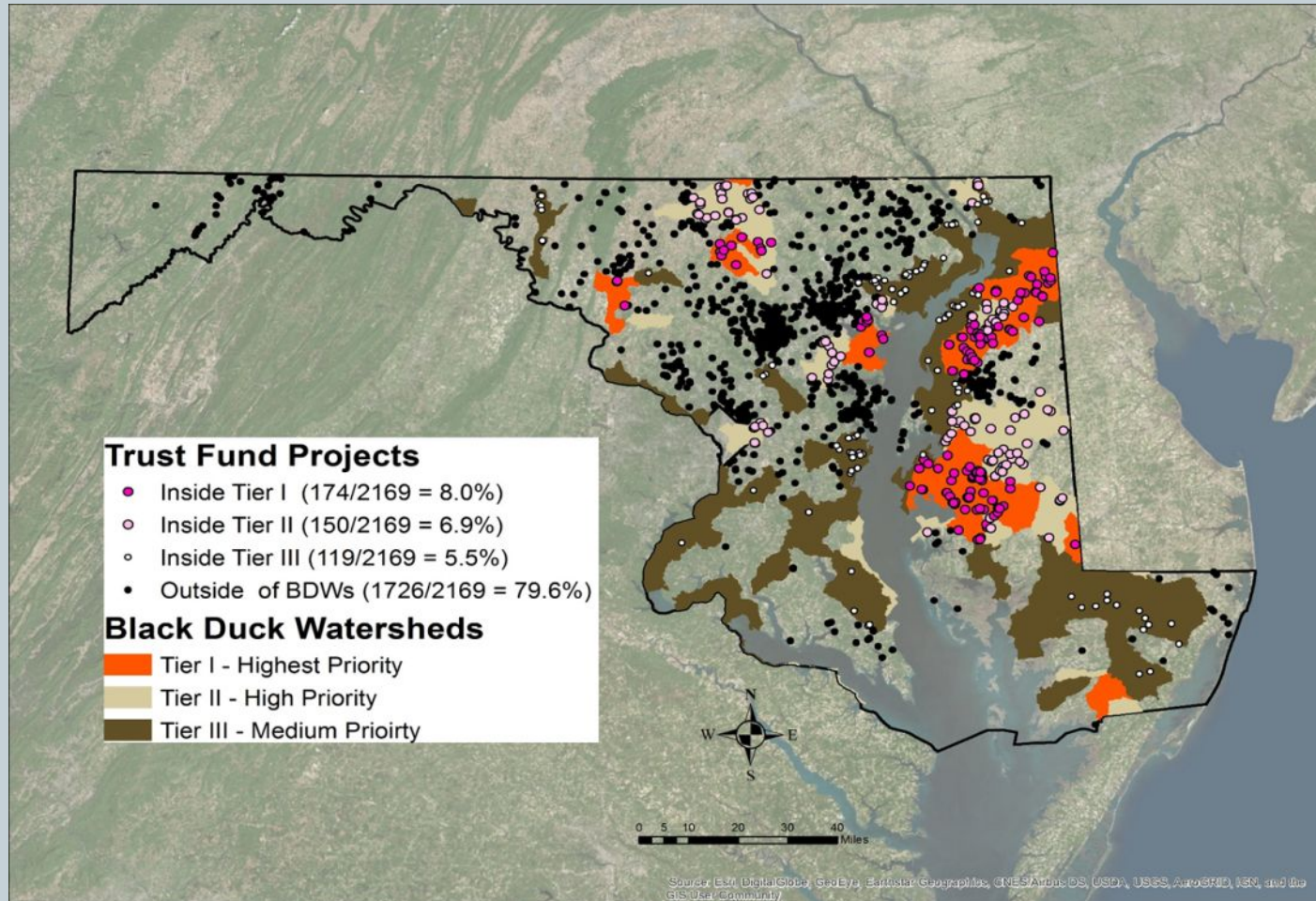
Maryland Trust Fund Projects Driven by Water Quality Priorities



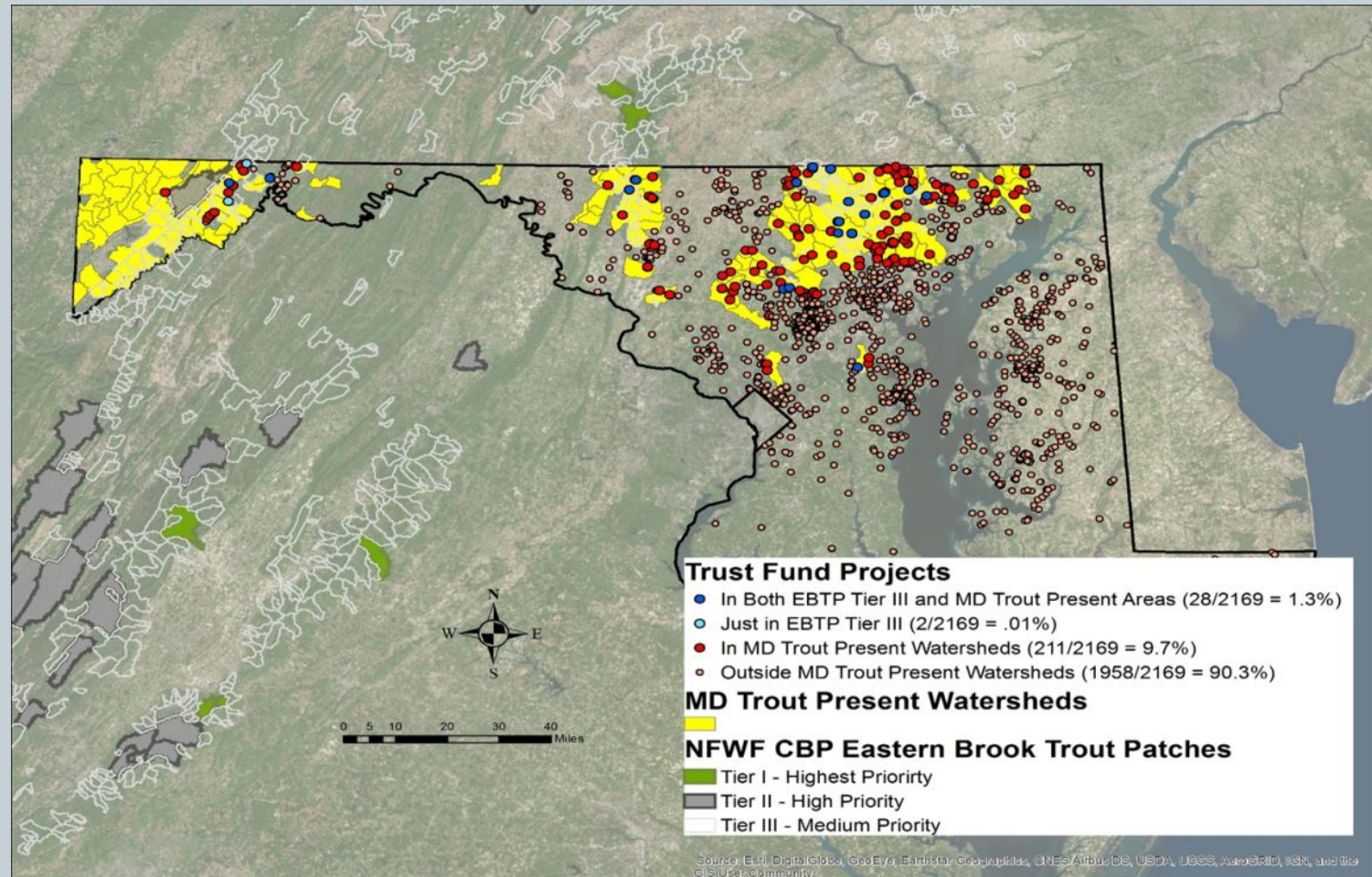
Assessing Living Resource Co-Benefits GreenPrint Targeted Ecological Areas



Black Duck Priority Watersheds



Maryland Trout and Eastern Brook Trout Priority Watersheds



Opportunities to Implement Projects in Priority Areas - Discussion



- Easy Access to Tools?
- Clear Decision Making Criteria?
- Evaluating Potential Co-Benefits?
- Who are your Funding Decision Makers?
- Making the Case for Linking Funding with Decision Support Tools!