

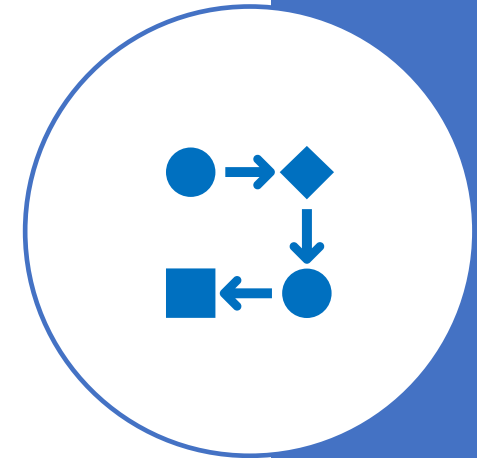


# Conowingo Draft WIP Update

Steering Committee Meeting  
August 26, 2020

# Updates to the Working Draft CWIP

- Scenario 5 became “Primary Conowingo WIP Strategy”
  - Updated loads based on new CAST version
- All other Scenarios were placed in the Appendix
  - Level 1 includes Scenario 8 & 10 which had majority SC consensus and went to PSC
  - Level 2 includes Scenarios that did not have majority SC consensus and did not go to PSC
- Added Finance Strategy Framework
  - Incorporated Activity #2 information
  - Adjusted for consistency

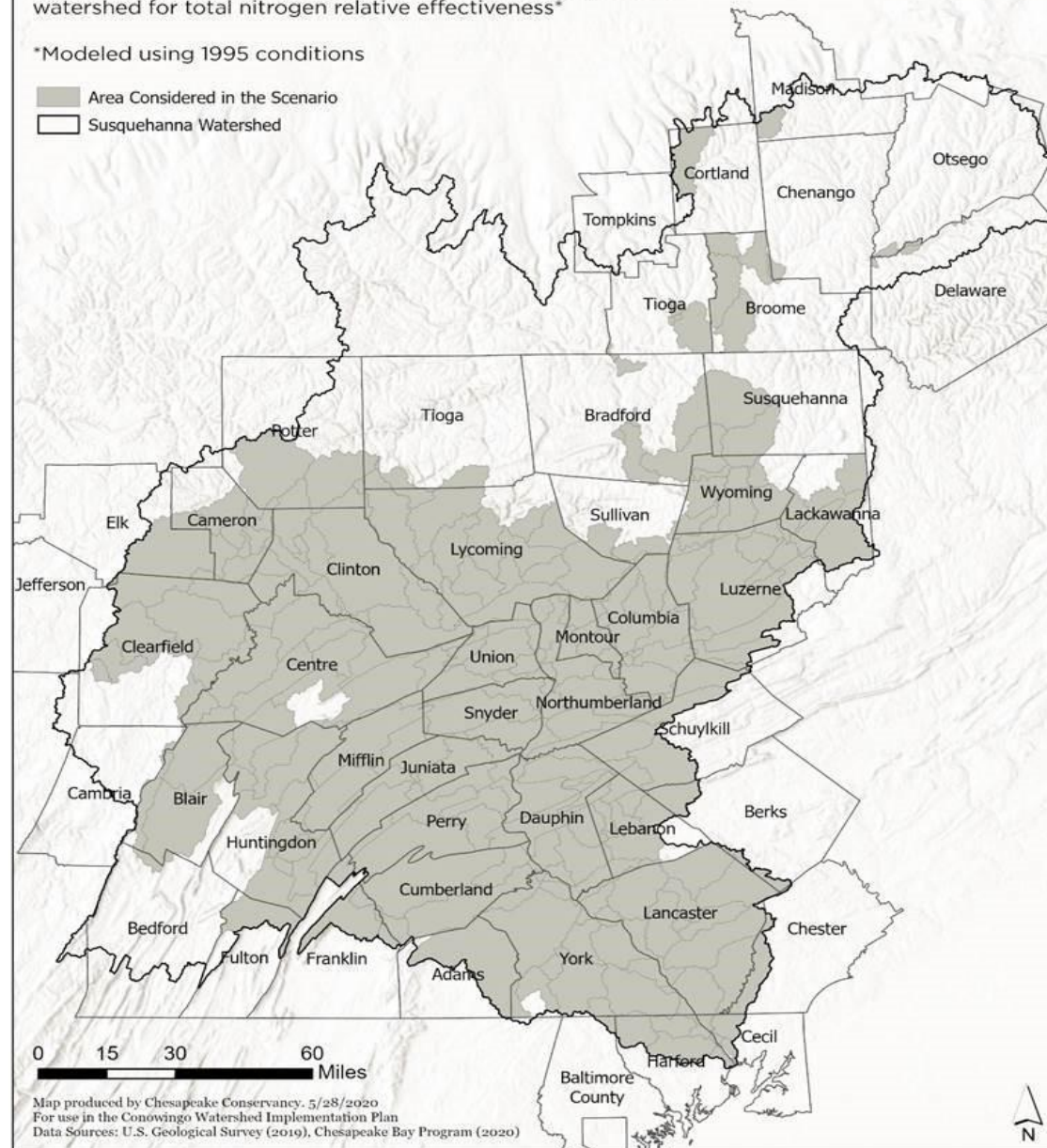


# Geographic Extent of the Primary Conowingo WIP Strategy

Upper median of land river segments within the Susquehanna watershed for total nitrogen relative effectiveness\*

\*Modeled using 1995 conditions

- Area Considered in the Scenario
- Susquehanna Watershed



Map produced by Chesapeake Conservancy, 5/28/2020  
For use in the Conowingo Watershed Implementation Plan  
Data Sources: U.S. Geological Survey (2019), Chesapeake Bay Program (2020)

BMPs Implemented in the Primary CWIP Scenario			
Practice	Duration	Unit	Amount (Thousands)
<i>Agricultural Practices</i>			
Nutrient Application Management Core Nitrogen	annual	Acres	223
Nutrient Application Management Rate Nitrogen	annual	Acres	624
Nutrient Application Management Placement Nitrogen	annual	Acres	207
Nutrient Application Management Timing Nitrogen	annual	Acres	626
Conservation Tillage	annual	Acres	216
High Residue Tillage	annual	Acres	48
Low Residue Tillage	annual	Acres	10
Prescribed Grazing	cumulative	Acres	84
Forest Buffers	cumulative	Acres in Buffers	20
Wetland Restoration	cumulative	Acres	12
Grass Buffers	cumulative	Acres in Buffers	21
Soil and Water Conservation Plan	cumulative	Acres	113
Manure Incorporation	annual	Acres	189
Barnyard Runoff Control	cumulative	Acres	0.6
<i>Urban Practices</i>			
Urban Forest Planting	cumulative	Acres	49
Urban Forest Buffers	cumulative	Acres	17

Nitrogen Load Reduction (Millions of Pounds) for the Primary CWIP Scenario				
STATE	Sector	Baseline	Primary CWIP	N Reduction
MD	Agriculture	0.85	0.68	0.17
	Developed	0.35	0.35	0.00
	Natural	0.26	0.26	0.01
	Septic	0.19	0.19	0.00
	MD Total	1.67	1.49	0.18
NY	Agriculture	5.62	5.50	0.12
	Developed	1.52	1.52	0.01
	Natural	2.97	2.96	0.01
	Septic	0.19	0.19	0.00
	NY Total	12.39	12.26	0.13
PA	Agriculture	39.20	33.51	5.69
	Developed	13.98	13.34	0.64
	Natural	16.51	16.42	0.09
	Septic	1.66	1.66	0.00
	PA Total	79.29	72.87	6.41
TOTAL		93.35	86.62	6.72