

DISTRICT'S DRAFT PHASE III WIP

CHESAPEAKE PRINCIPALS' STAFF COMMITTEE

MAY 9, 2019

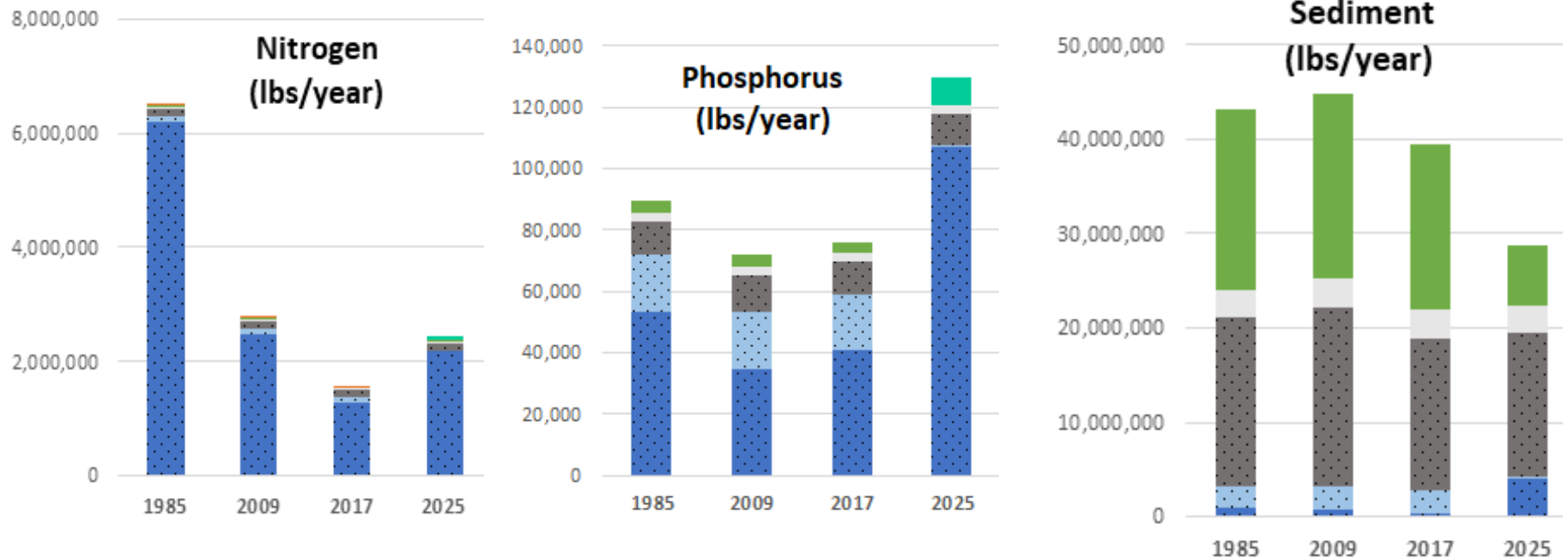


© KRISTA SCHLYER

★ ★ ★ DEPARTMENT
OF ENERGY &
ENVIRONMENT

★ ★ ★ GOVERNMENT OF THE
DISTRICT OF COLUMBIA
DC MURIEL BOWSER, MAYOR

District's Progress and Planning Goals



POINT SOURCES

■ Wastewater

■ Combined Sewer Overflows

■ Urban Runoff

NONPOINT SOURCES

■ Urban Runoff - Direct Drainage

■ Natural +
Atmospheric Deposition

■ Septic

■ Reserve Developed Load



Commitments

Meeting permit requirements and completing planned stream restoration projects will achieve planning goals, including additional reductions to address climate change

- Blue Plains Wastewater Permit
- MS4 Permit: 1,038 acres managed over 5 years
- Restore almost 40,000 linear feet of streams

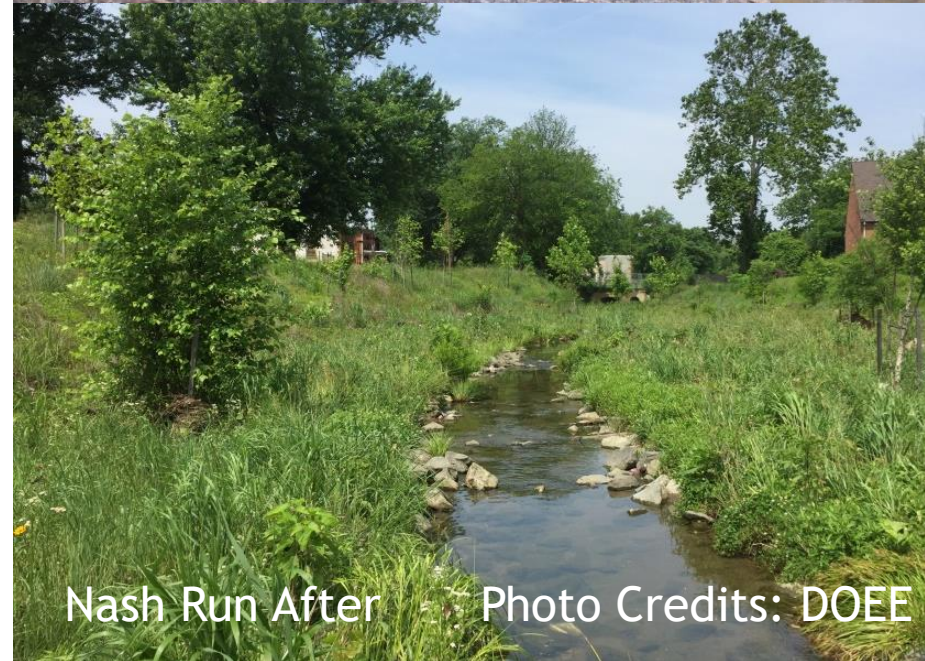
Identified priority areas for local benefits

- Improve local water quality
- Healthy streams and habitat
- Increase climate resilience

Maintenance a growing challenge



Nash Run Before

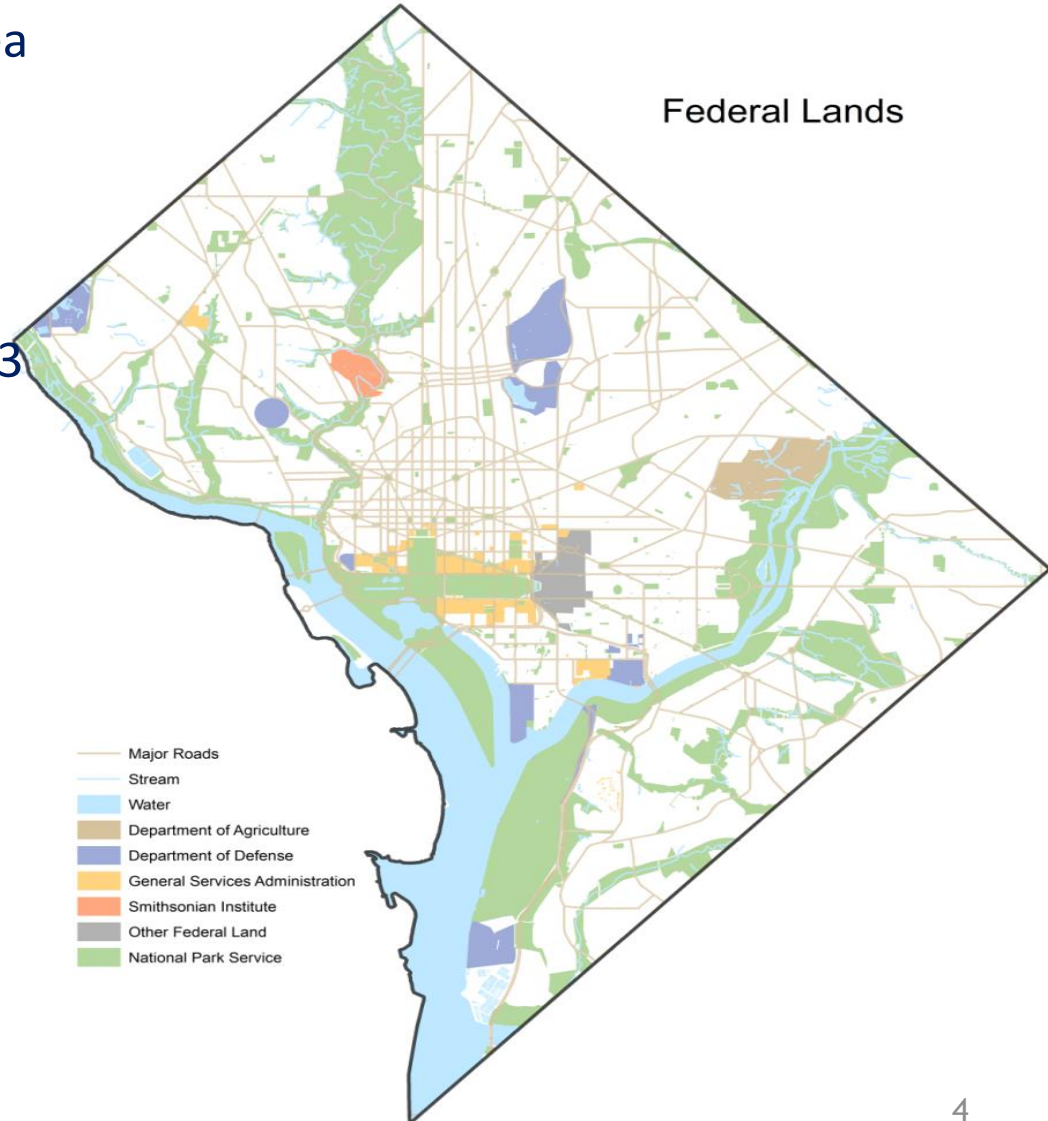


Nash Run After

Photo Credits: DOEE

Federal Facilities

- Almost 30 percent of the land area is federal
- DOEE hosted 1 webinar and 3 workshops for federal agencies
- DOEE received submissions from 3 of 5 federal agencies
- Need Partnership pressure and support for federal collaboration



Local Engagement Strategies

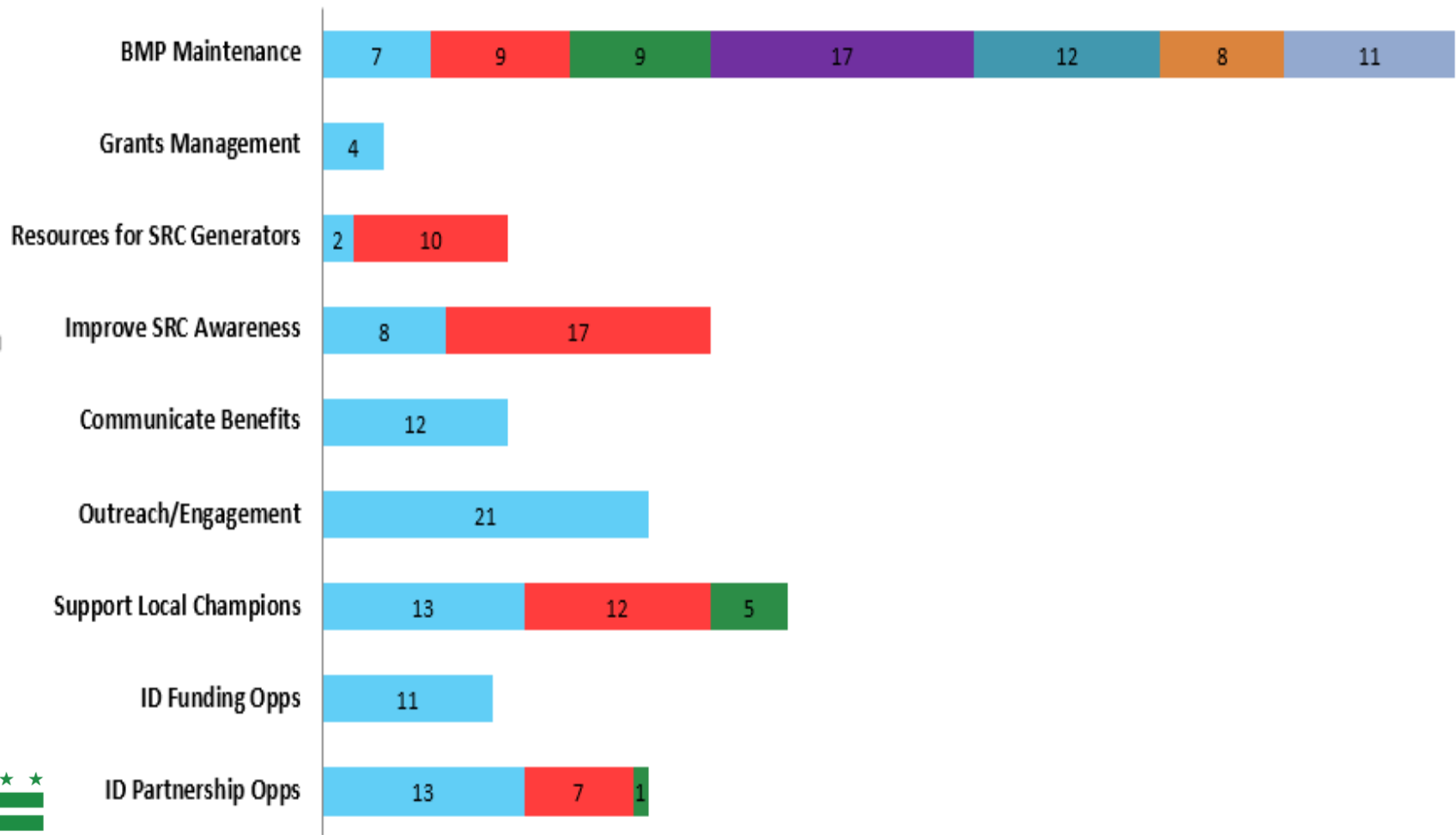
- DC Water and federal agencies
- Marketing contract focus groups
- Chesapeake Partner Advisory Group
- Existing forums



Chesapeake Partner Advisory Group

Number of Votes per Proposal by Issue

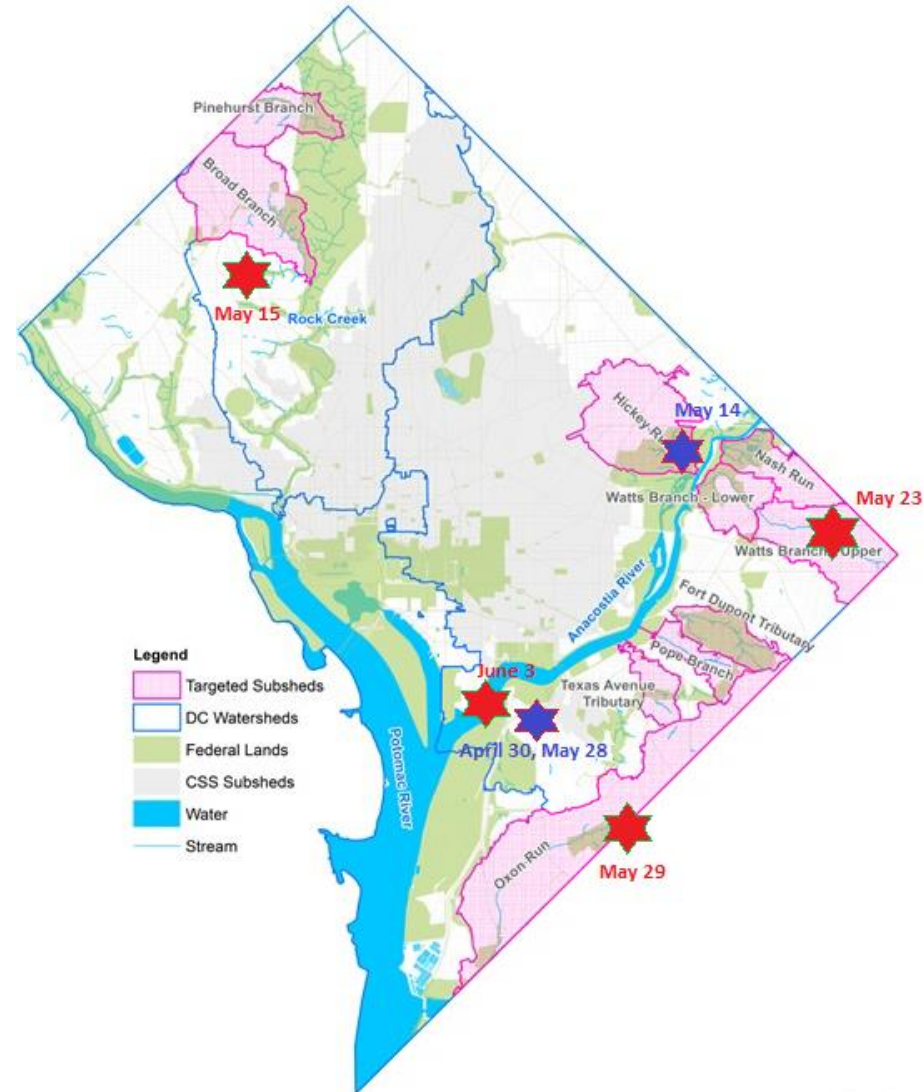
Proposal A Proposal B Proposal C Proposal D Proposal E Proposal F Proposal G



Public Review Process

Piloting approaches for public meetings:

- Co-hosting with organizations
- Interactive sessions
- Working to offer boat tours, childcare, refreshments at some meetings
- Attending existing meetings



Challenges & Opportunities

Challenges:

- Final federal agency submissions

Opportunities and Next Steps:

- Received WIP assistance resources for outreach to developers, designers and facility managers
- Continuing additional options to support maintenance and workforce development
- Will continue semi-annual stakeholder roundtables and other recommendations to support partner engagement and implementation

Katherine Antos

Branch Chief

Partnering & Environmental Conservation Branch
Department of Energy & Environment

katherine.antos@dc.gov

(202) 574-7606

<https://doee.dc.gov/service/watershed-implementation-plans-chesapeake-bay>

chesapeake@dc.gov