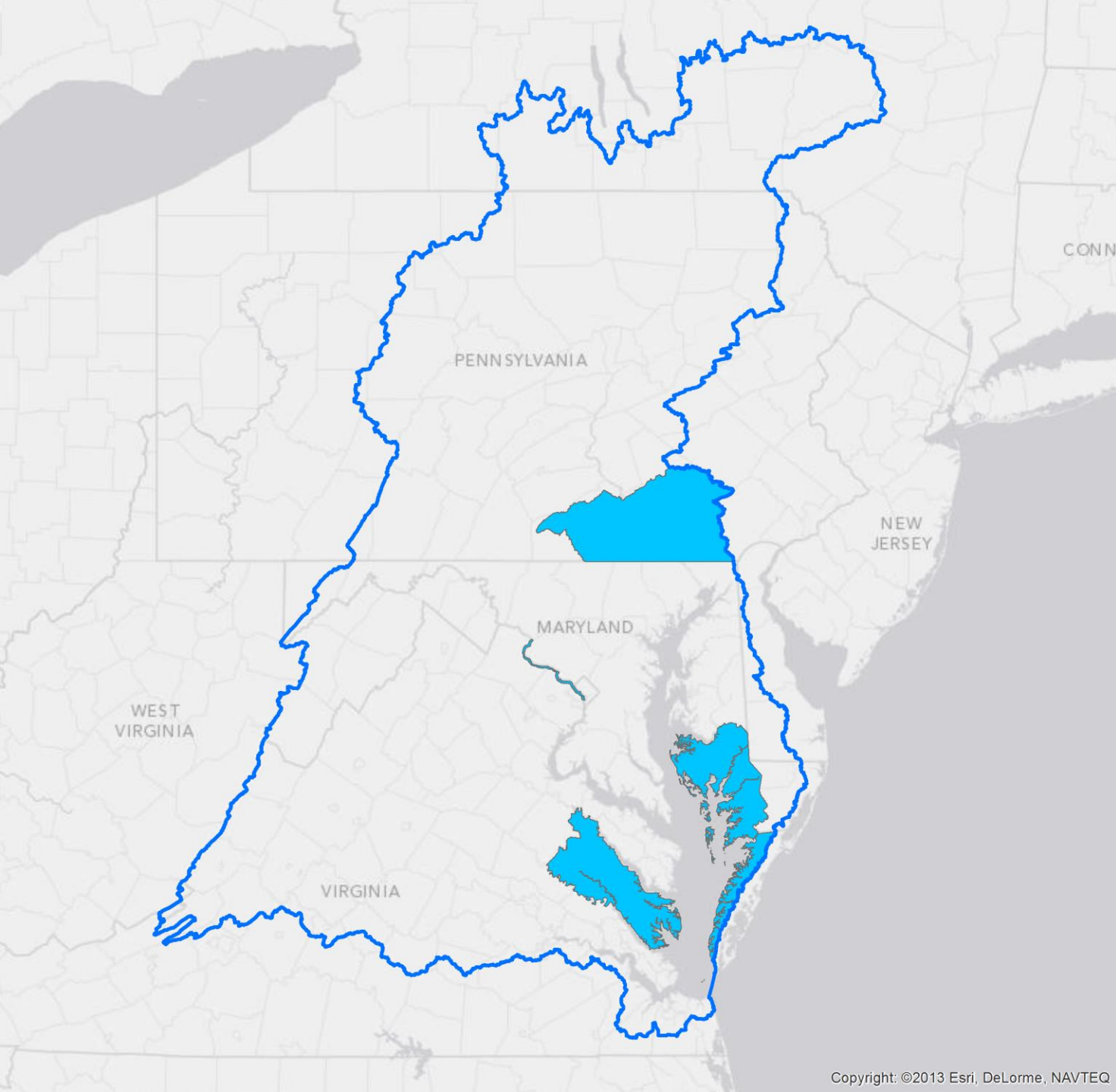


Inter-GIT Mapping

Considerations Moving Forward

Example 1 – Conservation Prioritization for Federal Agencies

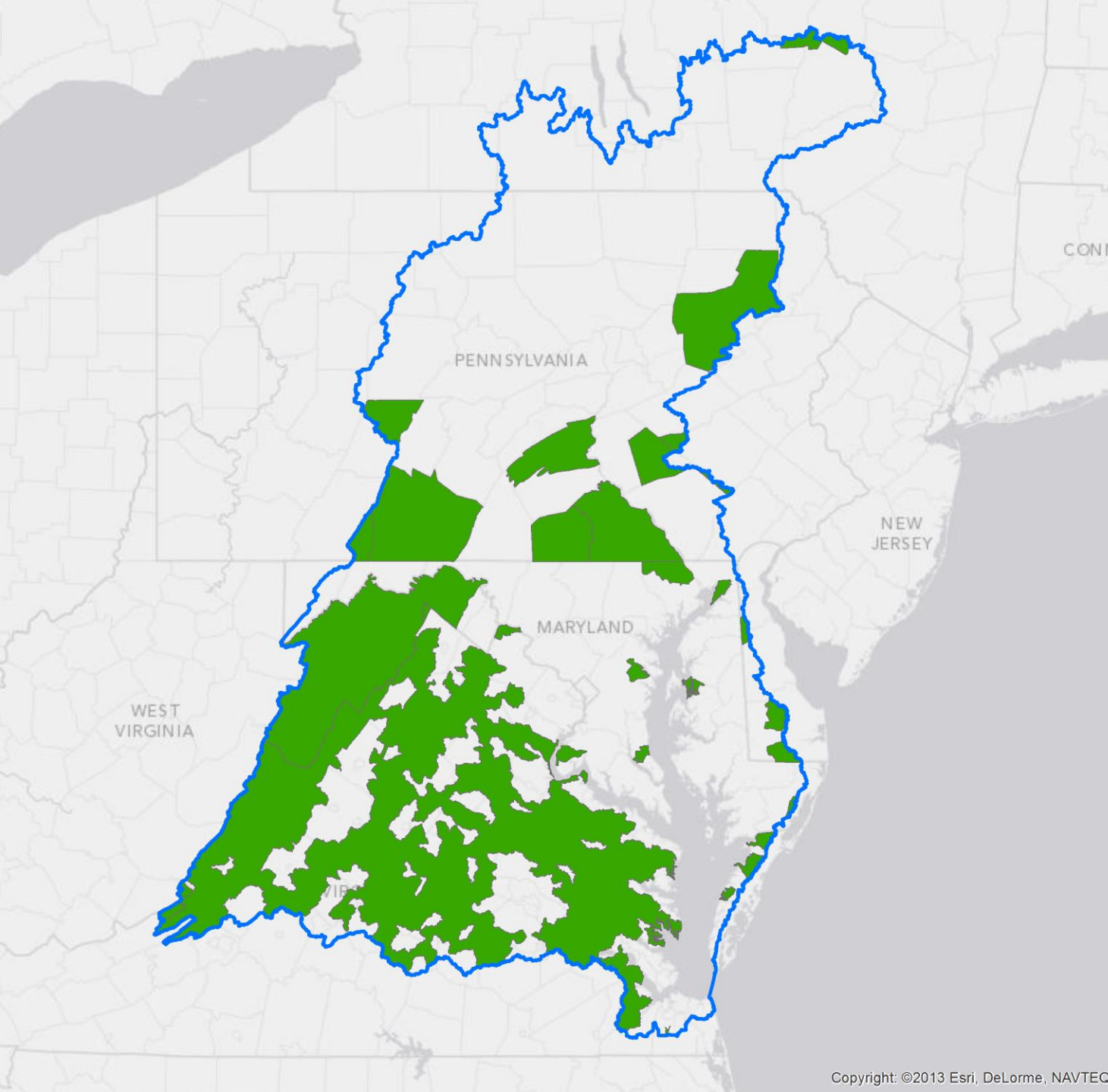


Conservation Example

NOAA Coastal and Estuarine Land Conservation Program (CELCP) Priority Areas

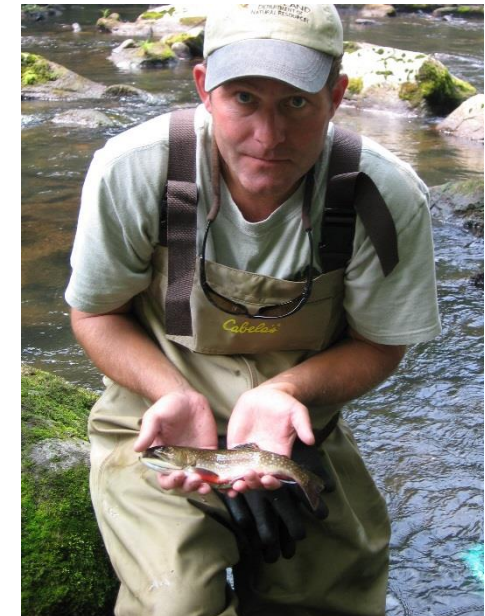
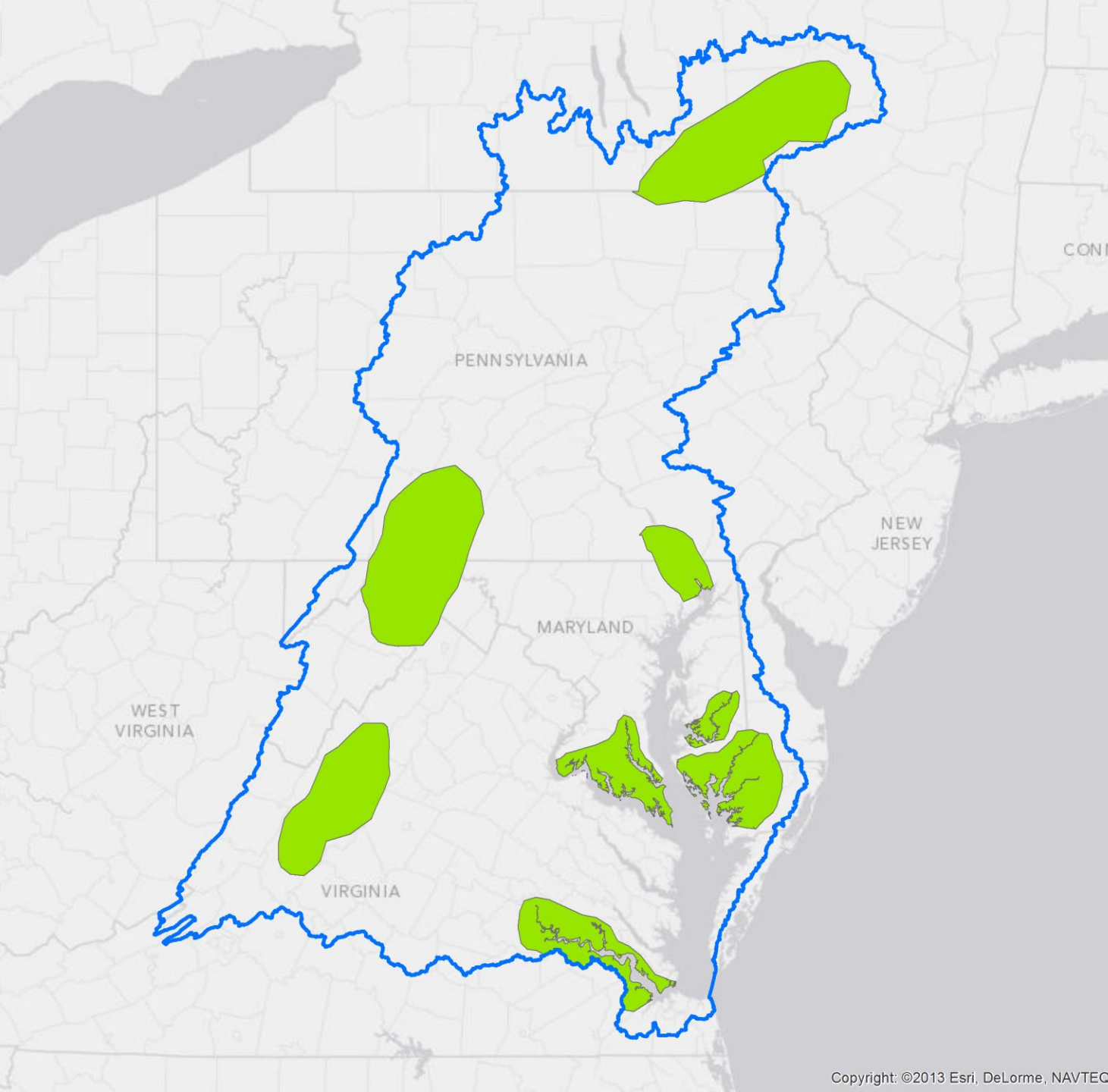
Conservation Example

USFS Forest Legacy Priority Areas



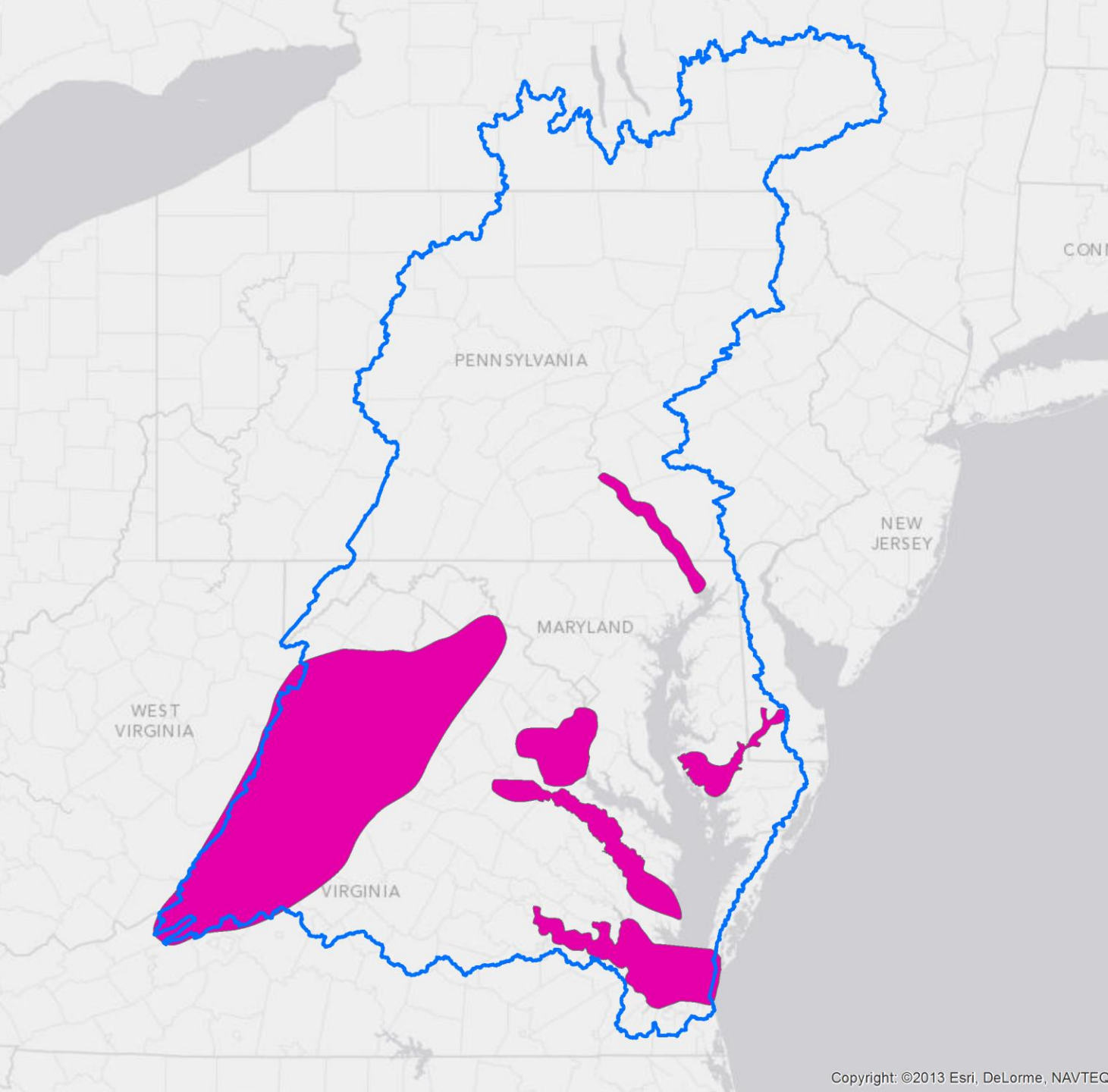
Conservation Example

USFWS Priority Areas (Slattery Index)

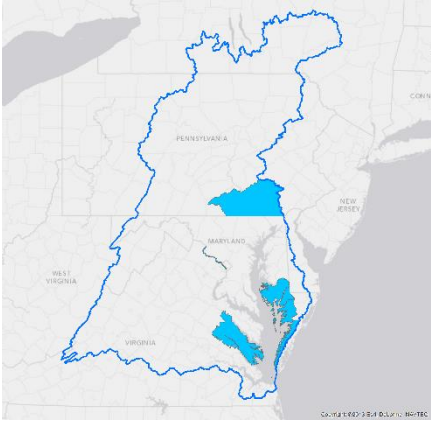


Conservation Example

NPS Land and Water Conservation Fund Priority Areas

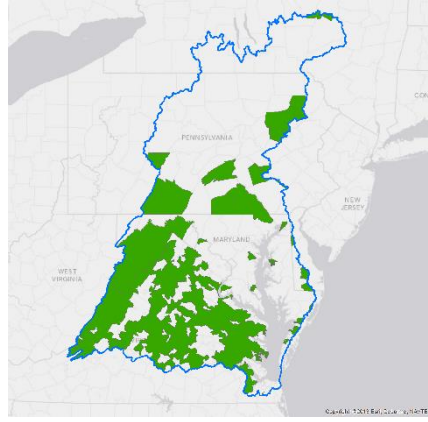


CELCP Priorities



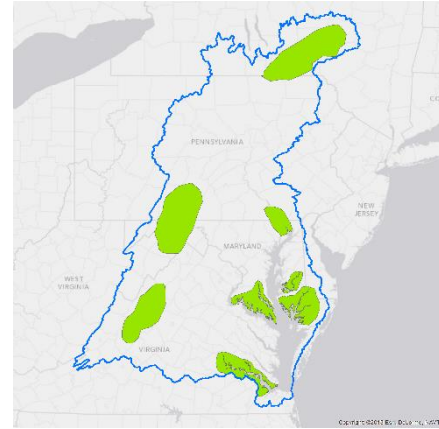
+

Forest Legacy Priorities



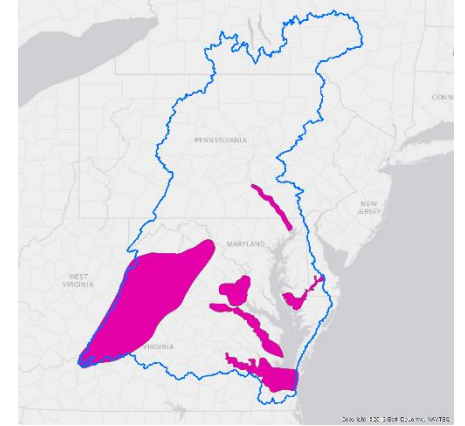
+

USFWS Priorities

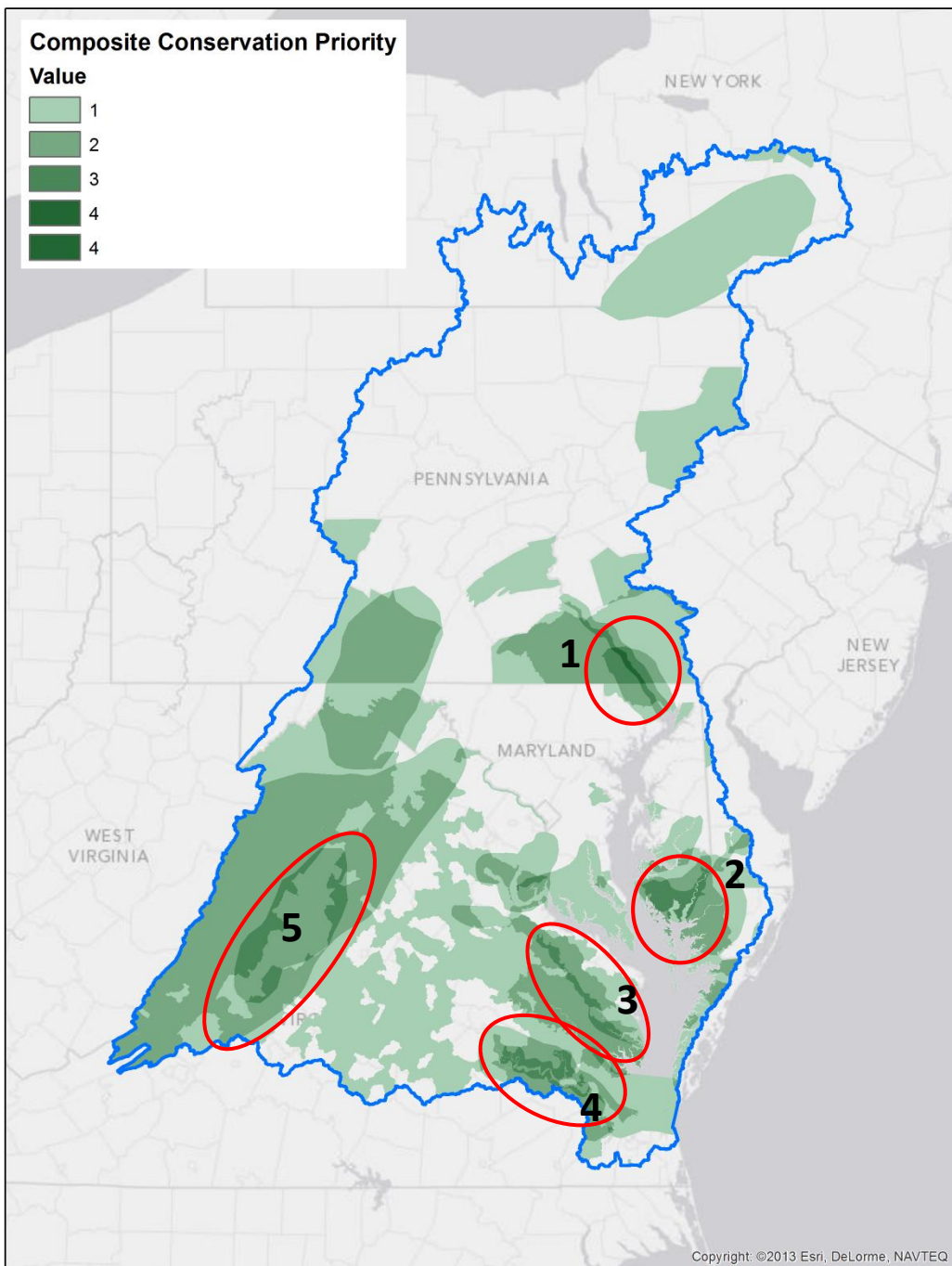


+

LWCF Priorities



= ???



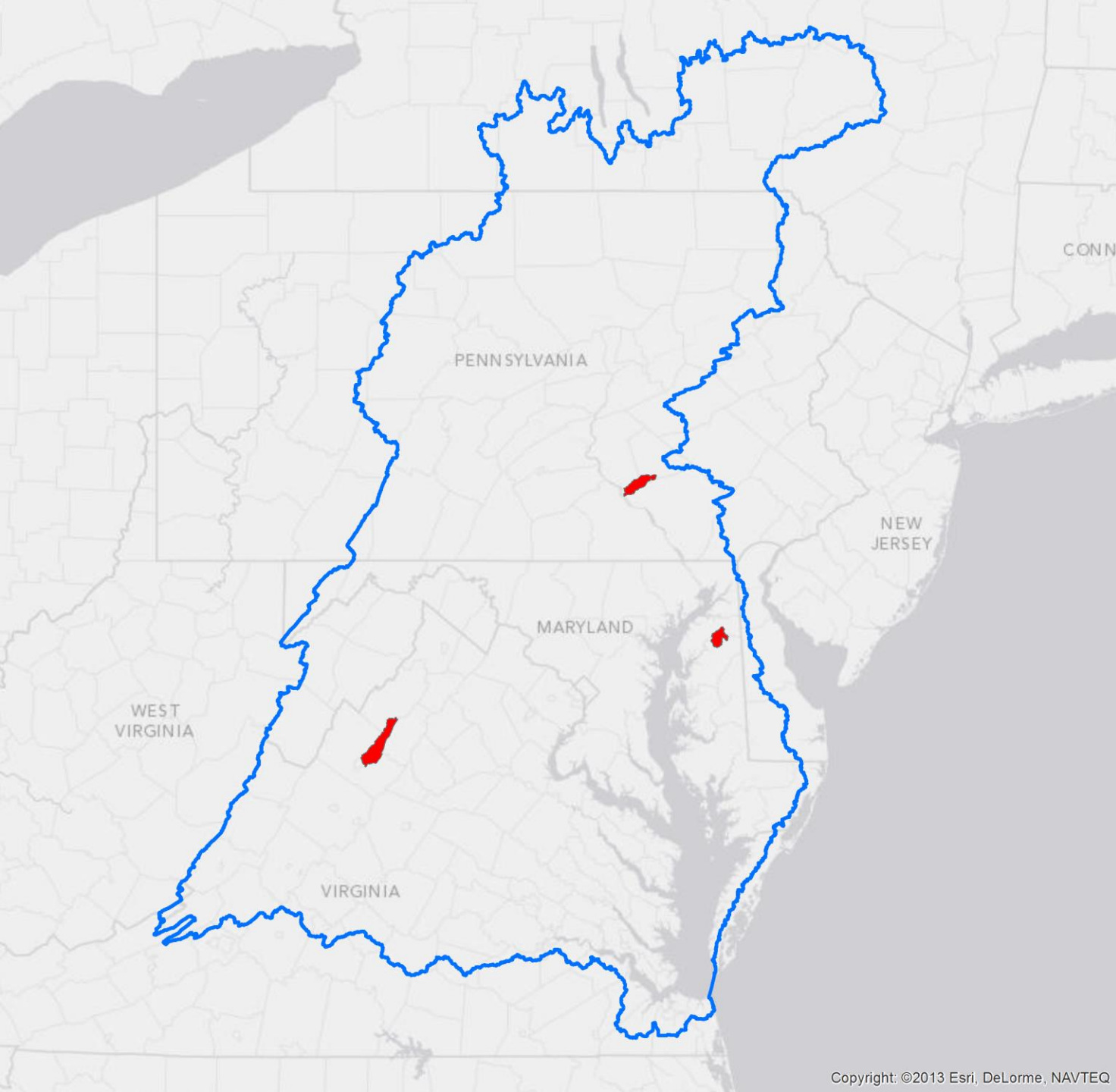
Number of Overlapping Priority Areas

1. Lower Susquehanna
2. Blackwater/Nanticoke
3. Rappahannock
4. James
5. Shenandoah

Example 2 – Restoration Prioritization for Federal Agencies

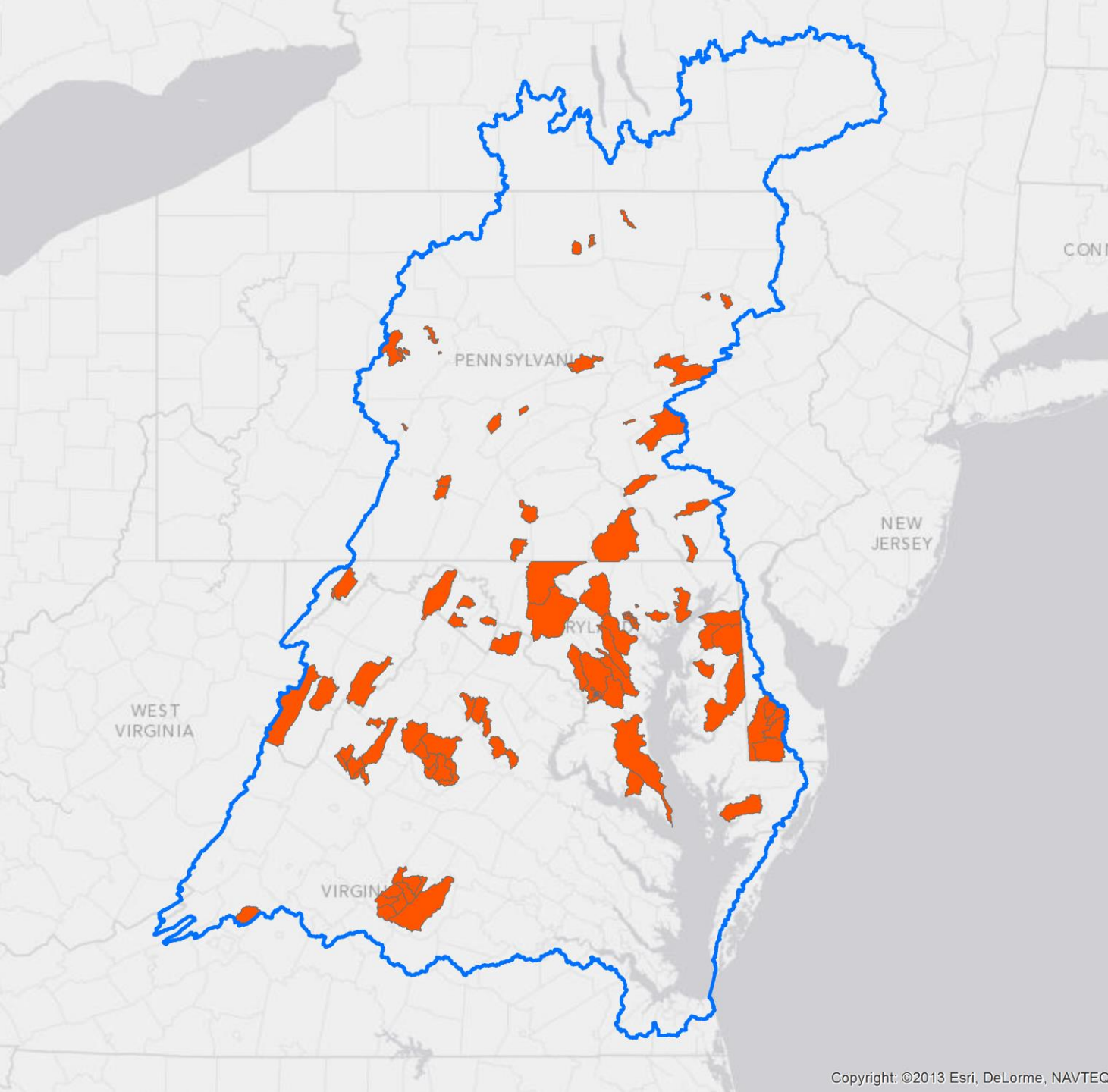
Restoration Example

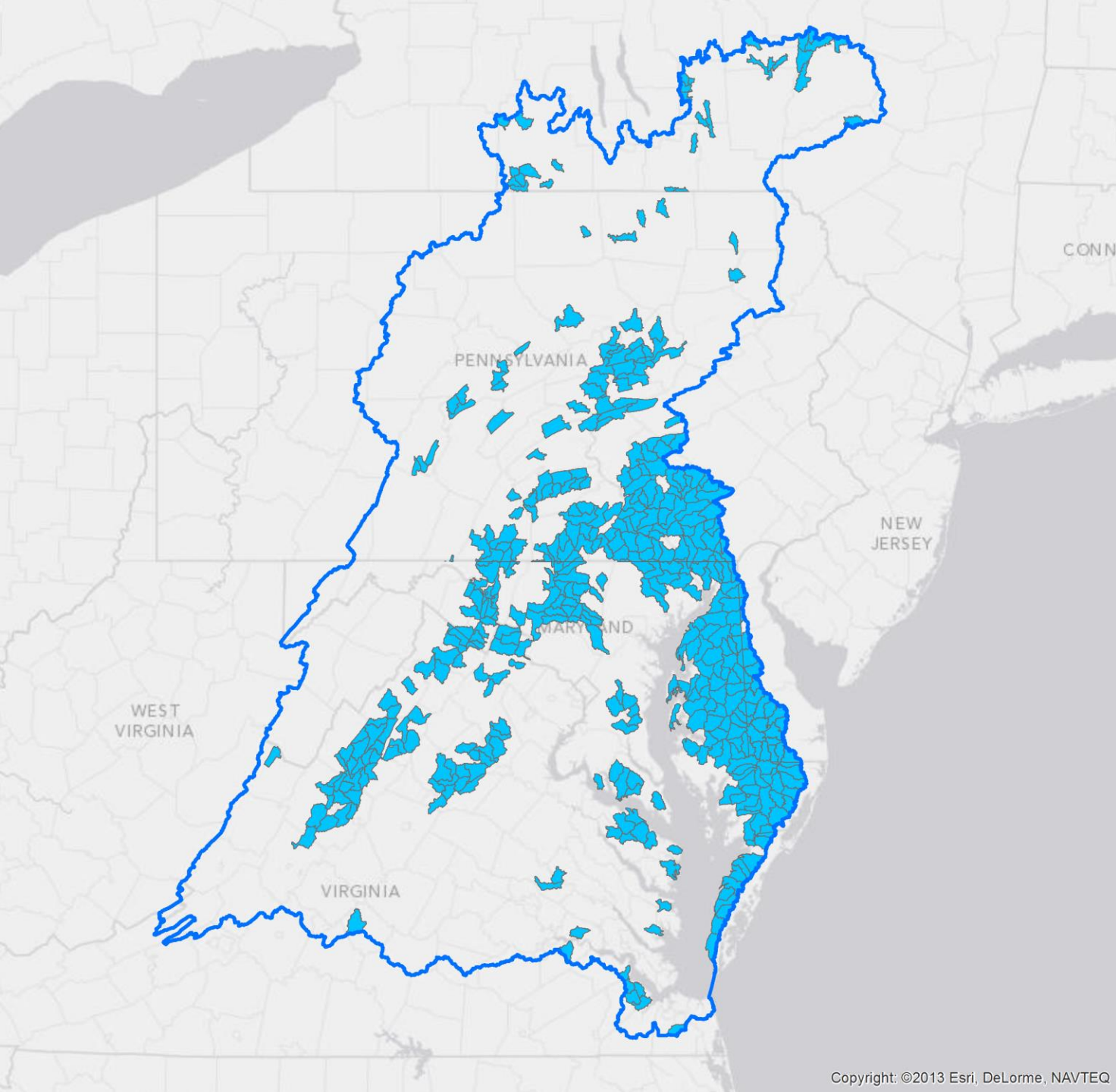
NRCS/USGS Ag Showcase Watersheds



Restoration Example

EPA Region 3 Priority 319 Watersheds



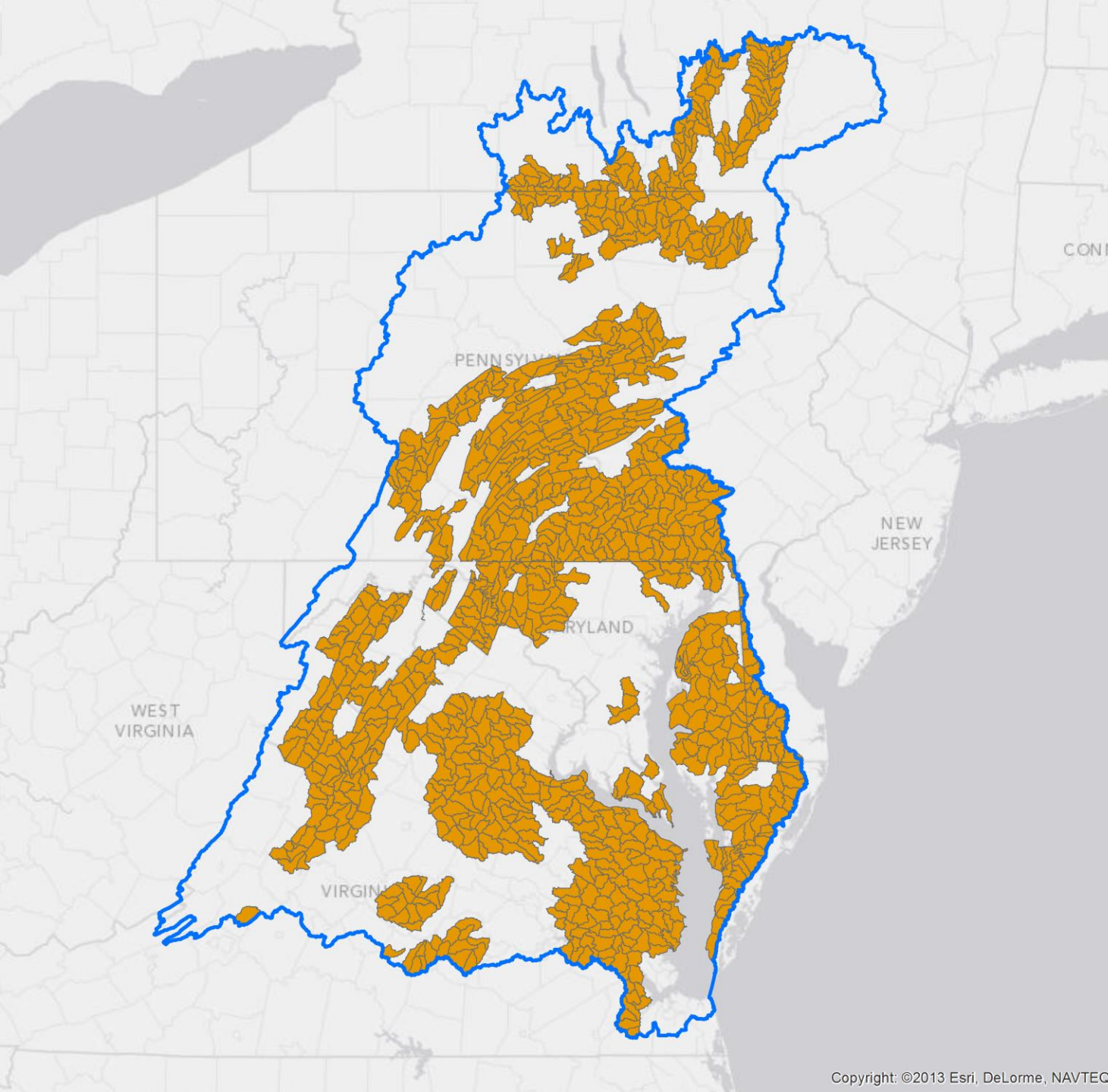


Restoration Example

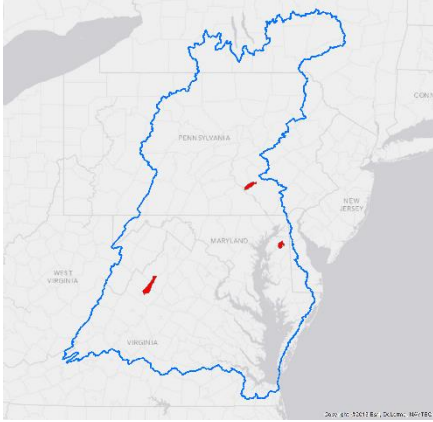
**EPA Priority
Ag Watersheds**

Restoration Example

NRCS CBWI 2010 Farm Bill

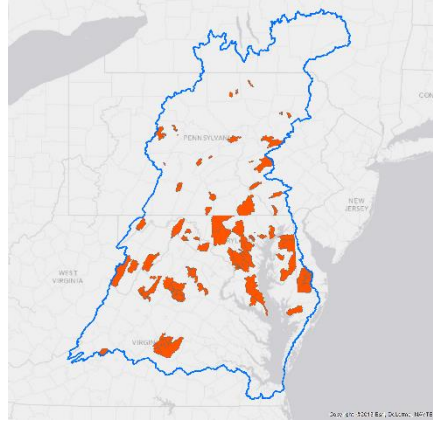


Showcase
Watersheds



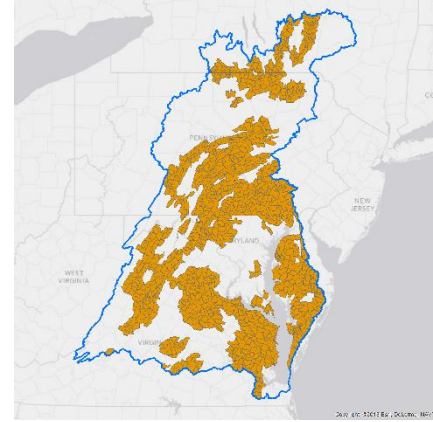
+

319 Priority
Watersheds



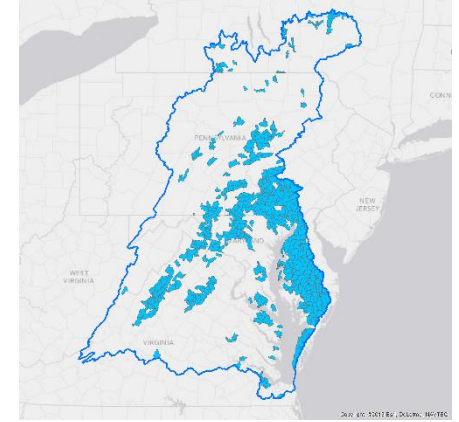
+

CBWI
Watersheds

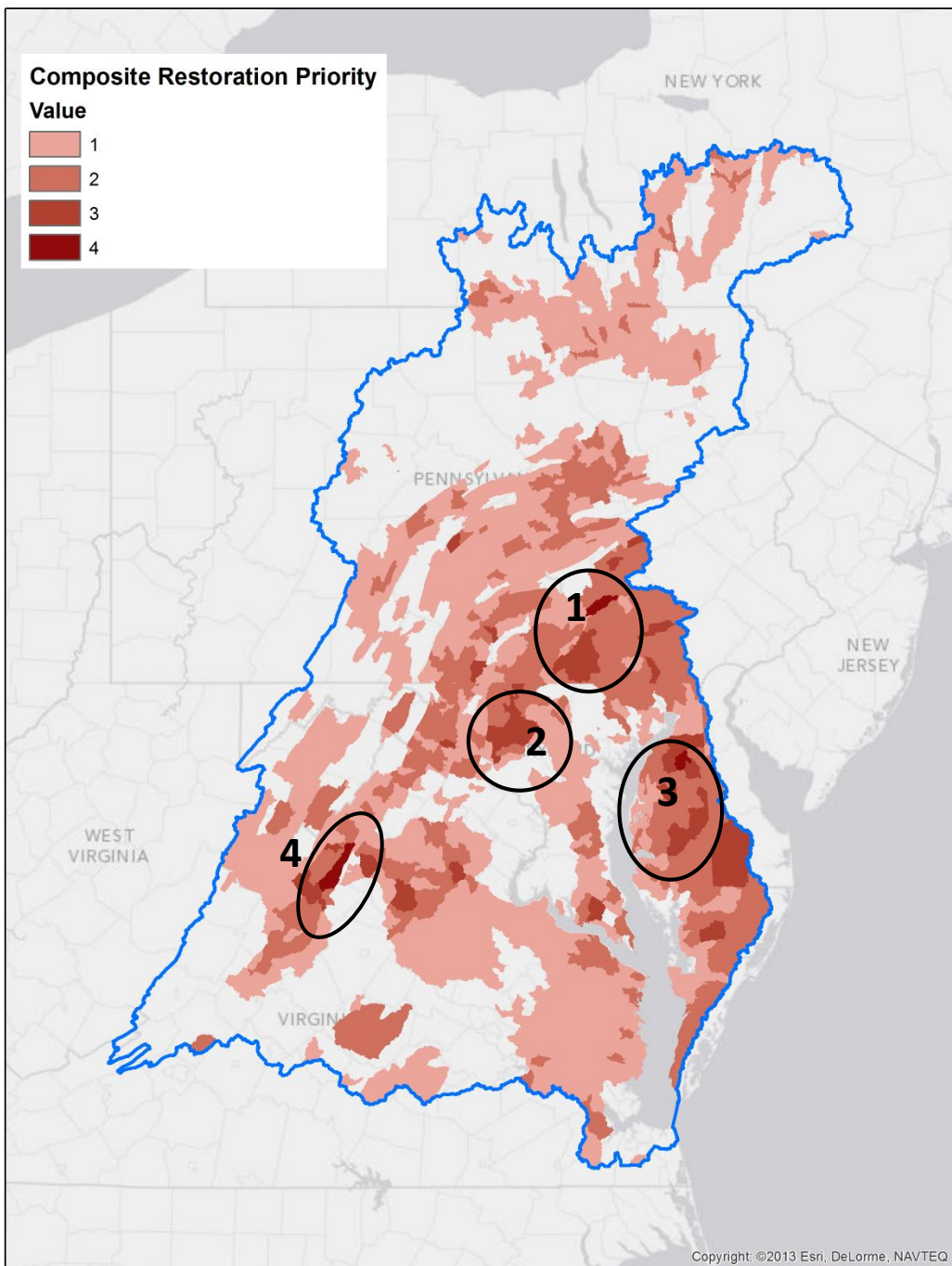


+

Priority Ag
Watersheds



= ???



Number of Overlapping Priority Areas

1. South Central Pennsylvania
2. Monocacy
3. Middle Eastern Shore
4. Shenandoah

So What's the Problem?



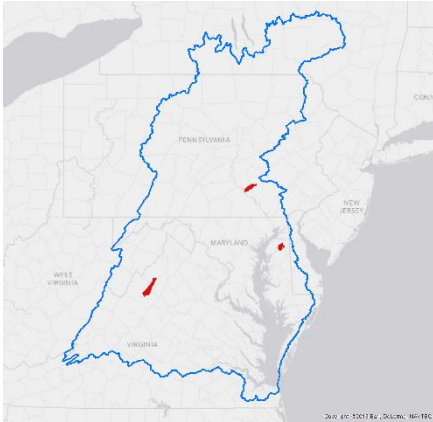
Sources, Fate, and Transport of Nitrogen and Phosphorus in the Chesapeake Bay Watershed: An Empirical Model



Scientific Investigations Report 2011–5167

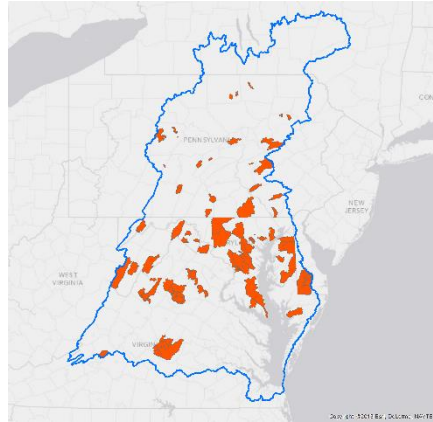
U.S. Department of the Interior
U.S. Geological Survey

Showcase
Watersheds



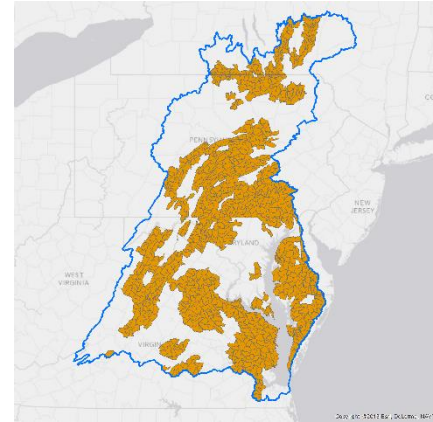
+

319 Priority
Watersheds



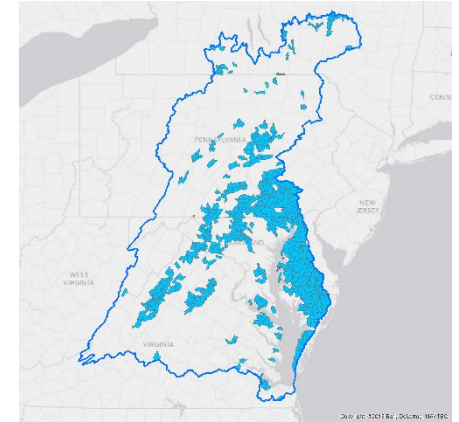
+

CBWI
Watersheds



+

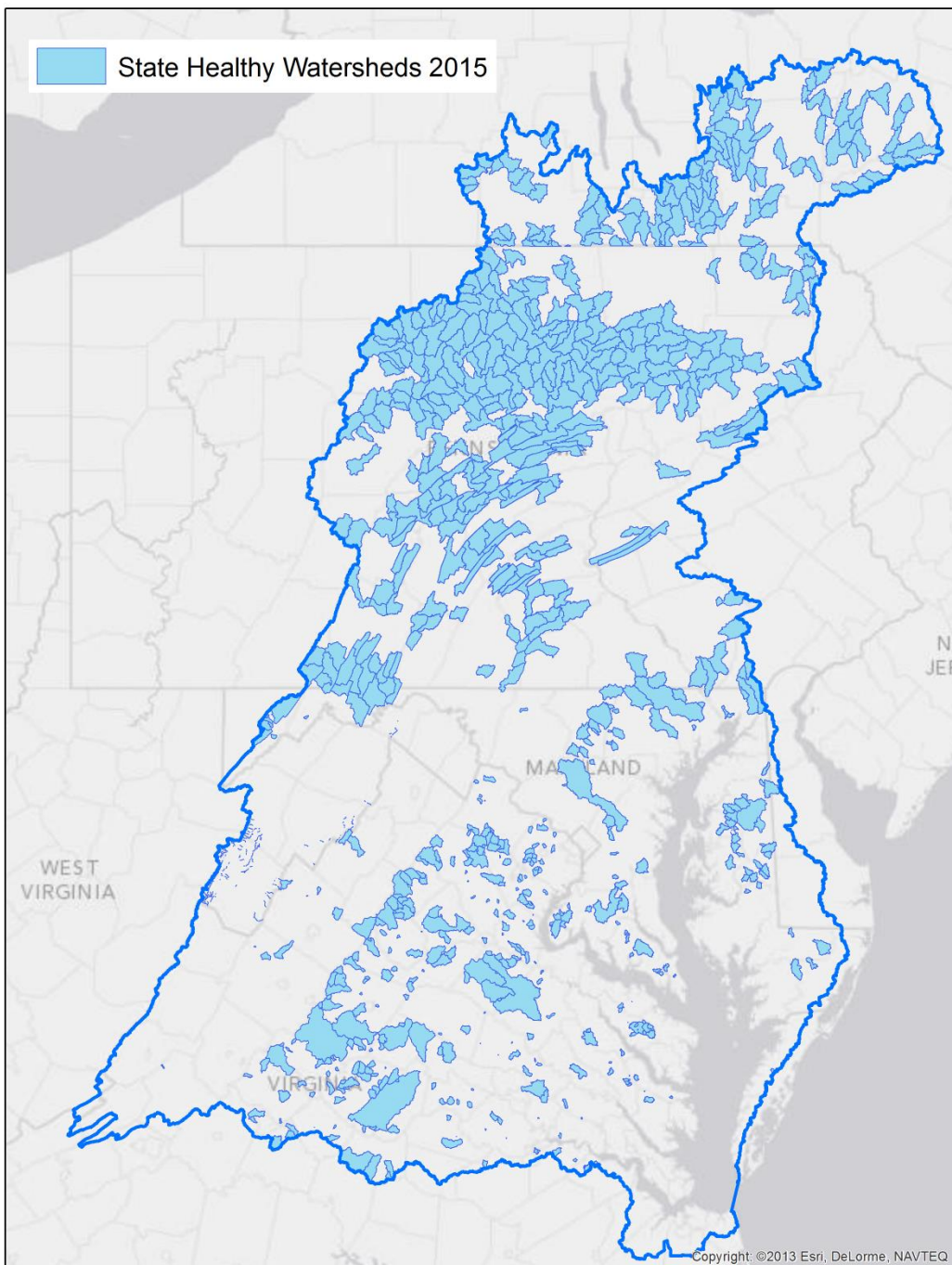
Priority Ag
Watersheds



SPARROW

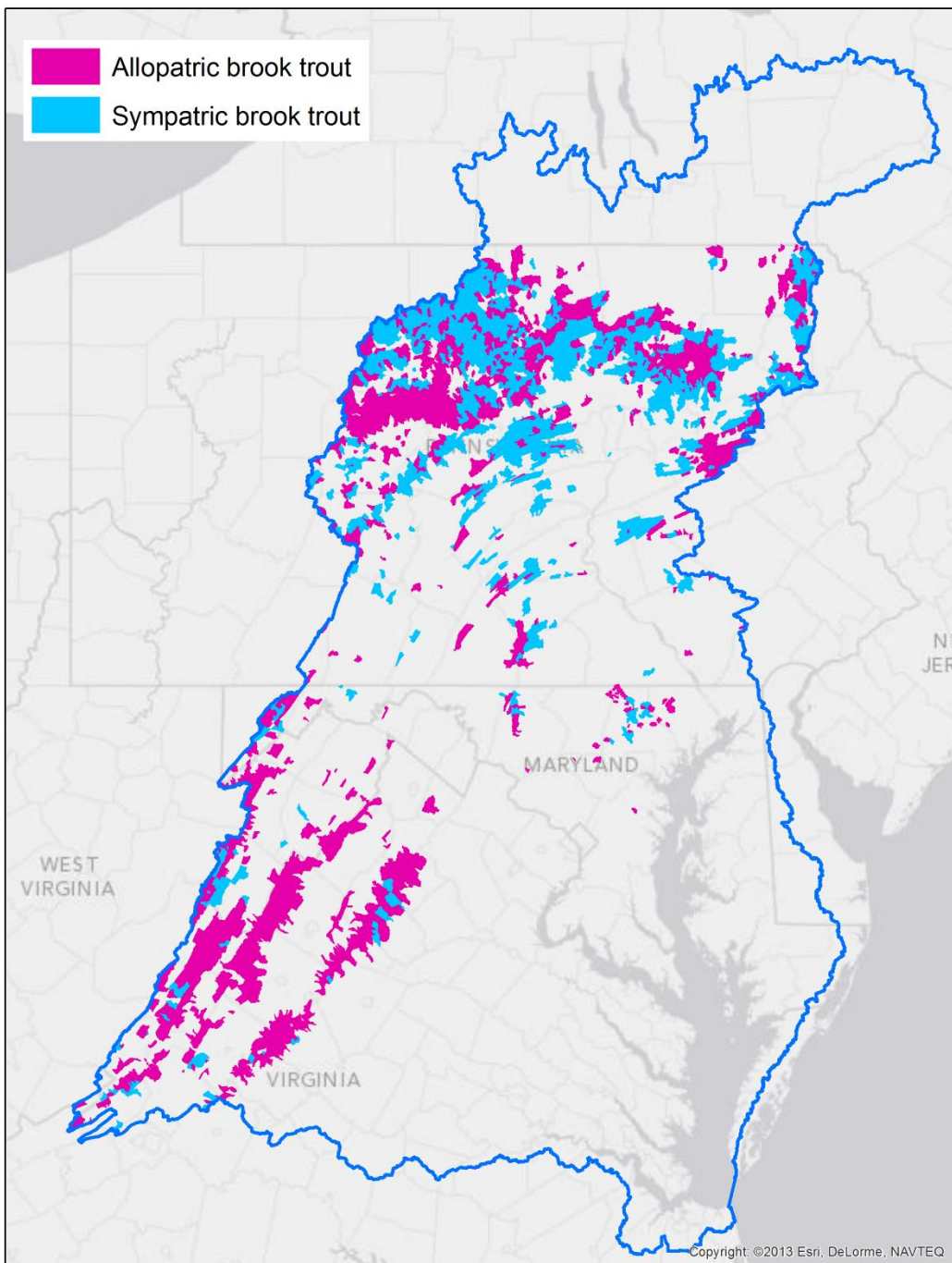
= ???

Example 3 – Conservation Prioritization in Highlands Region based on Watershed Agreement Outcomes



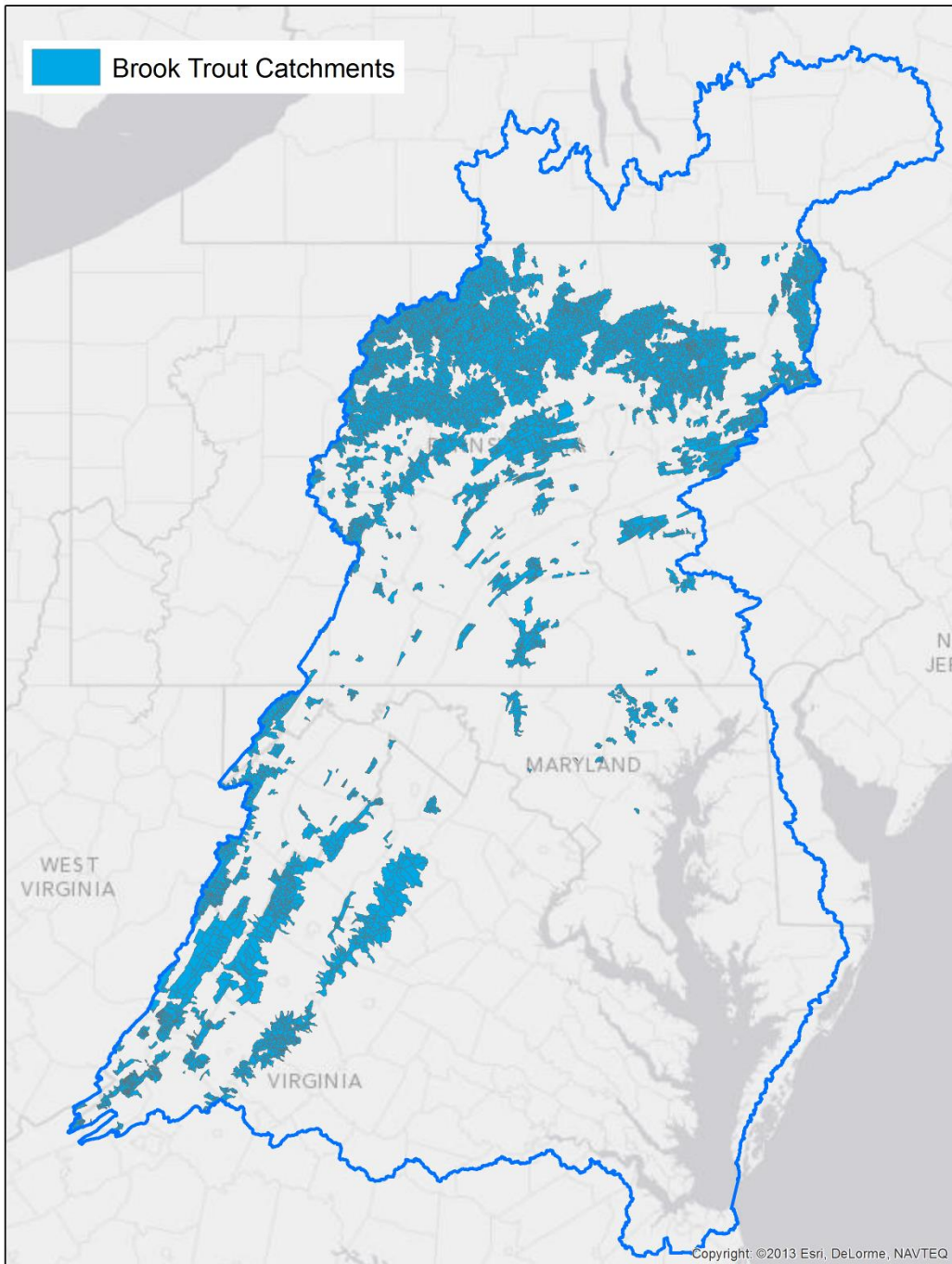
Outcome-based Conservation Example

State Designated Healthy Watersheds



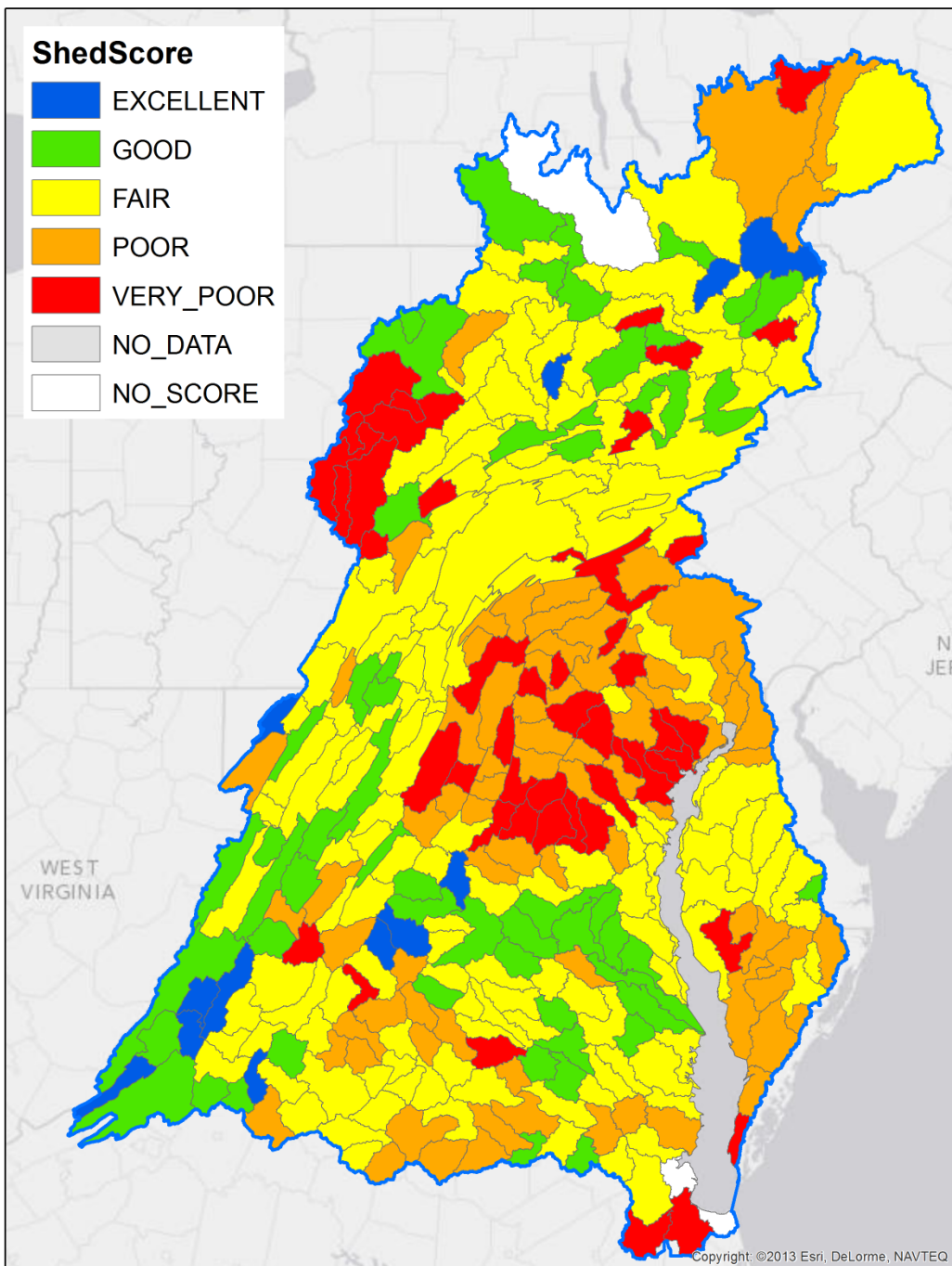
Outcome-based Conservation Example

Catchments Occupied by Brook Trout



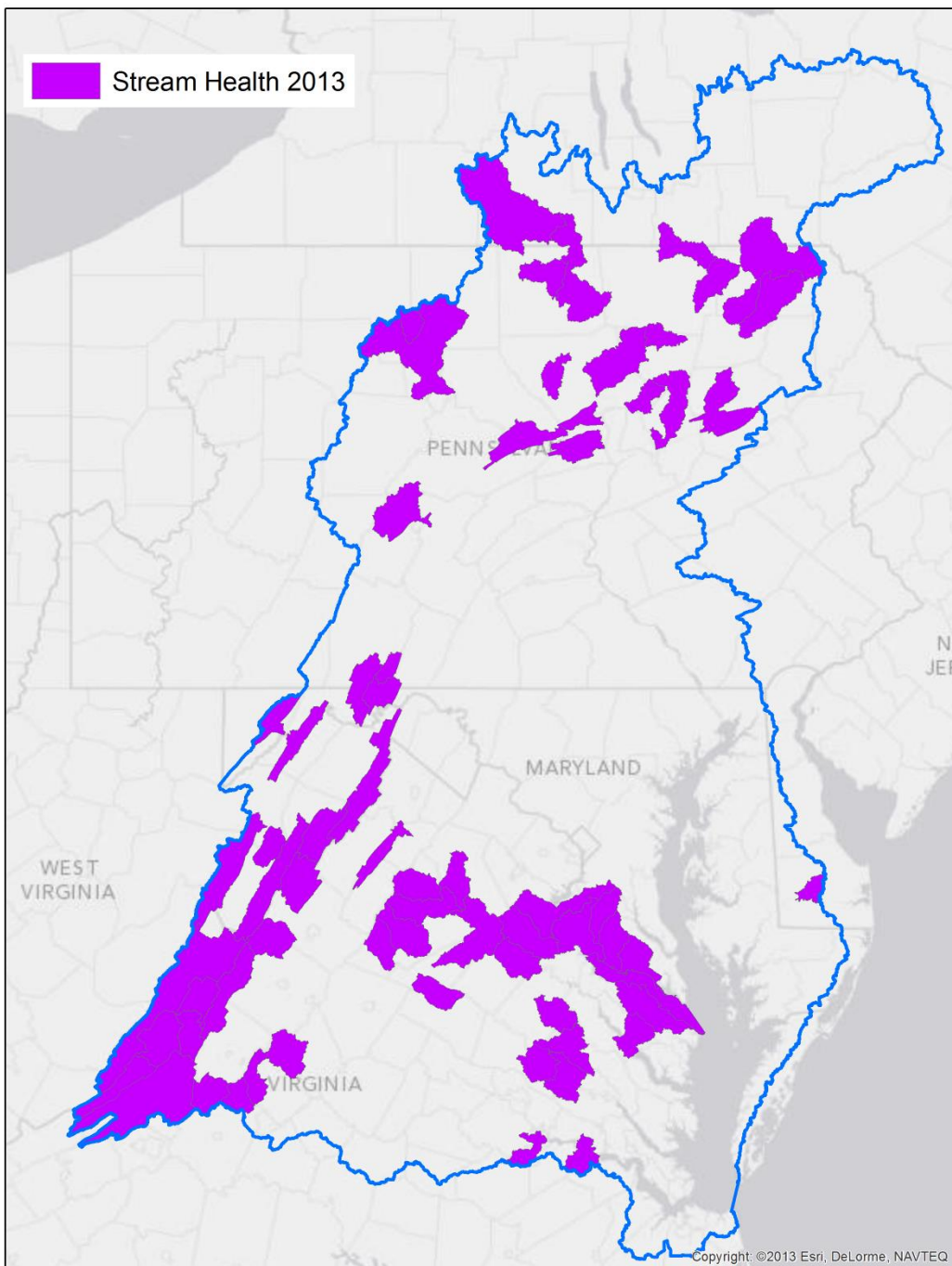
Outcome-based Conservation Example

Catchments Occupied
by Brook Trout
(Assumption – Both
Allopatric and Sympatric
Populations)



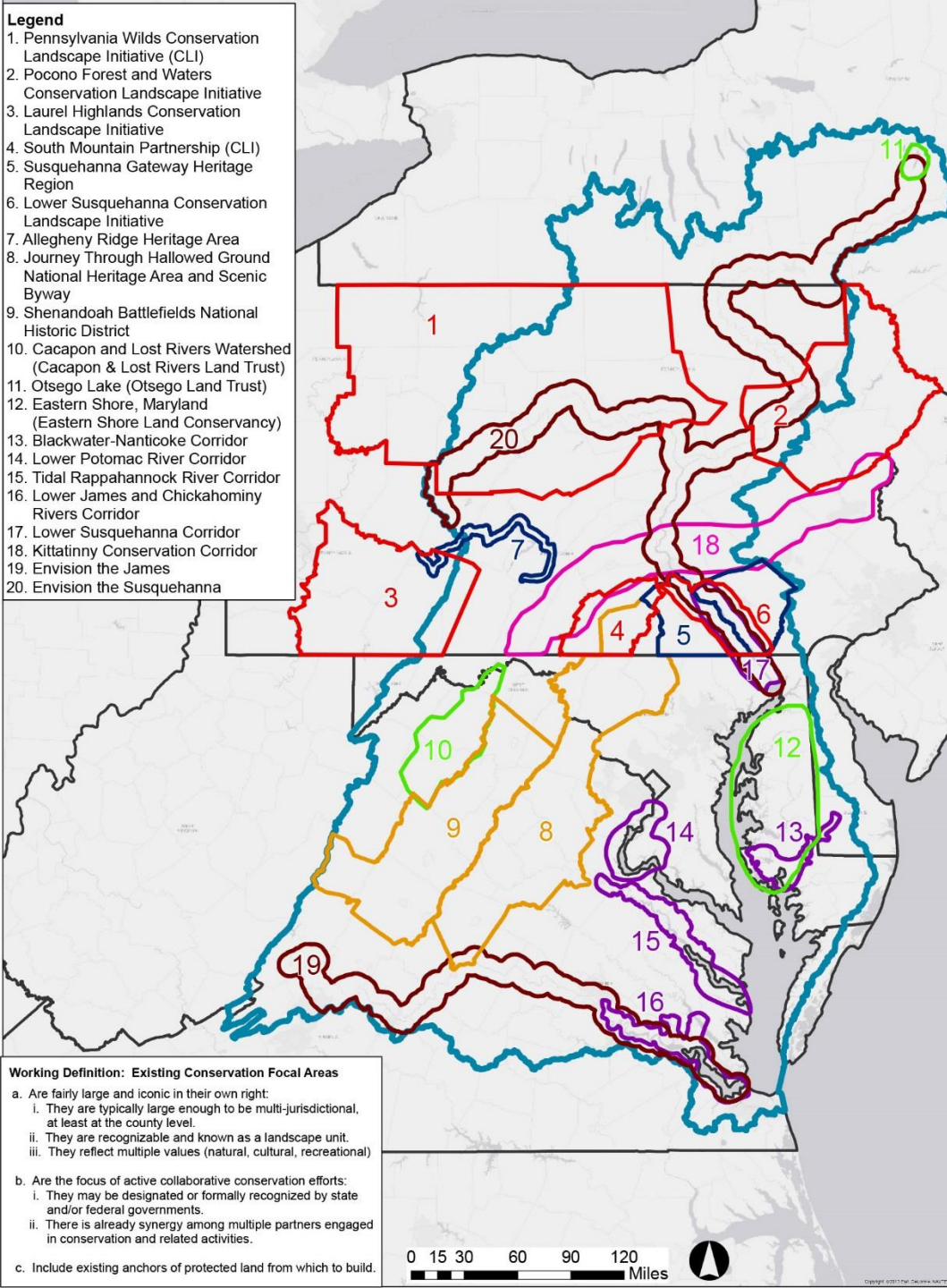
Outcome-based Conservation Example

Average Stream Health



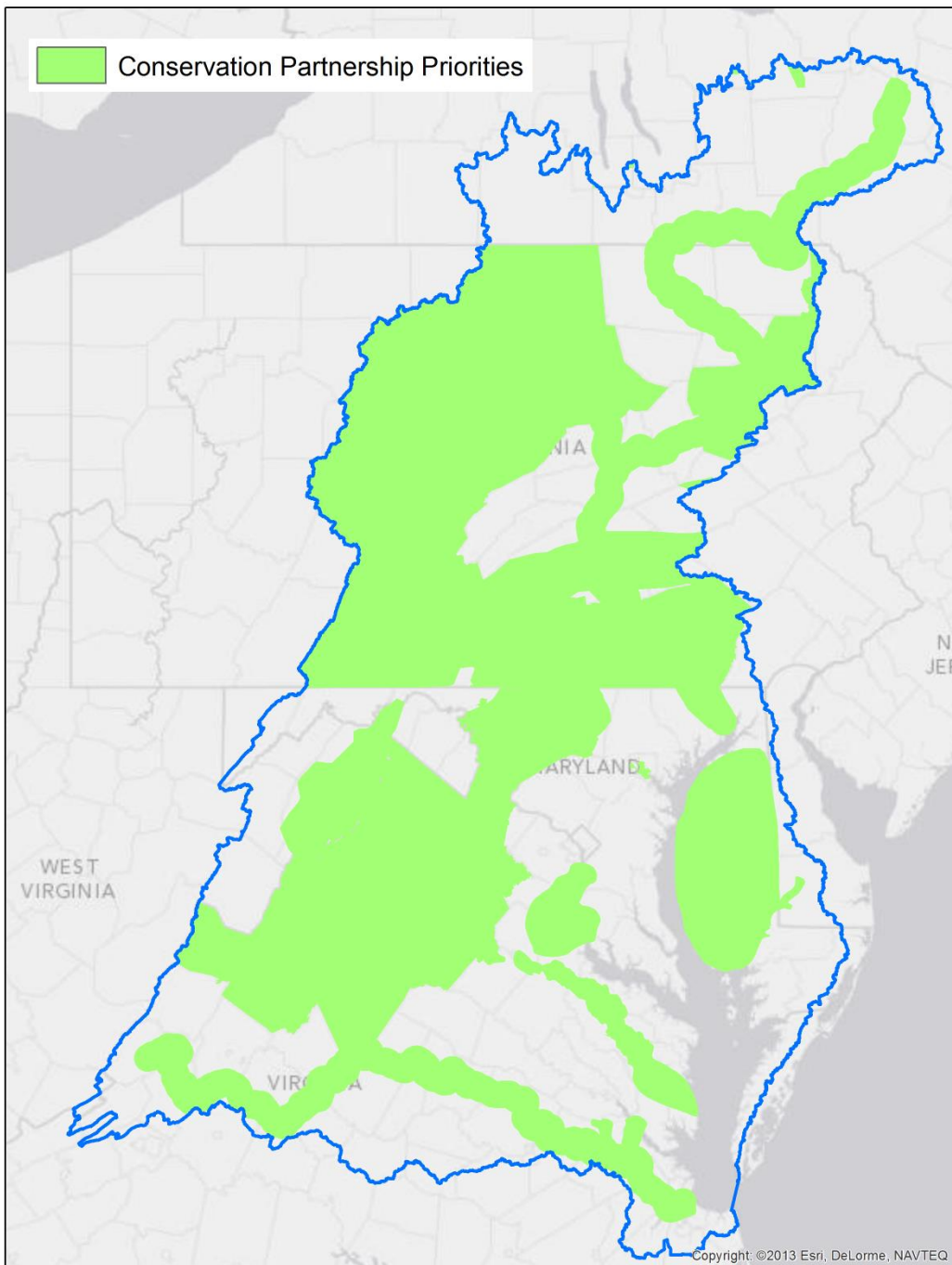
Outcome-based Conservation Example

Average Stream Health
(Assumption –
Excellent or Good Only))



Outcome-based Conservation Example

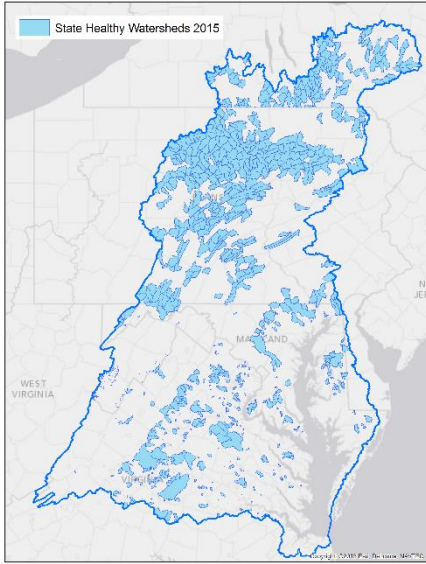
Conservation Focal Areas
(placeholder example only)



Outcome-based Conservation Example

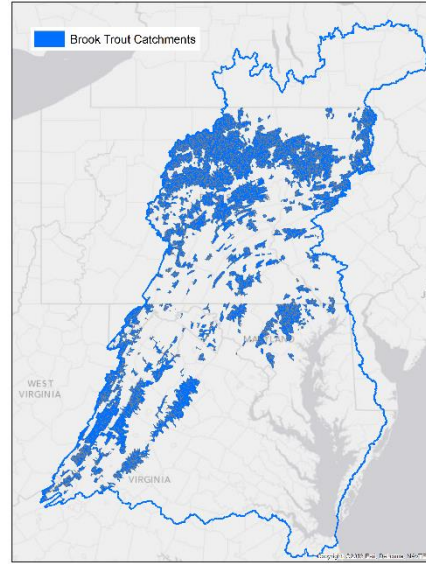
Conservation Focal Areas
(placeholder example only)

Healthy
Watersheds



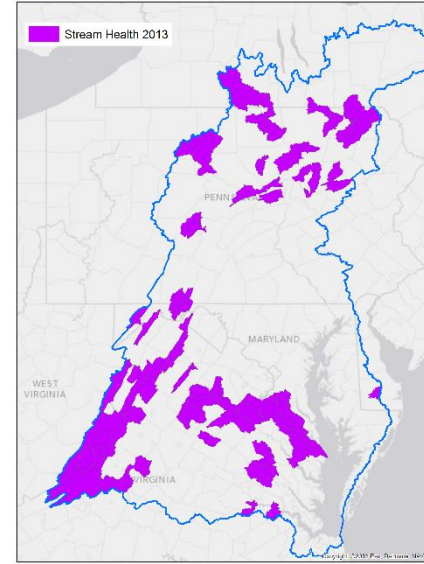
+

Brook
Trout



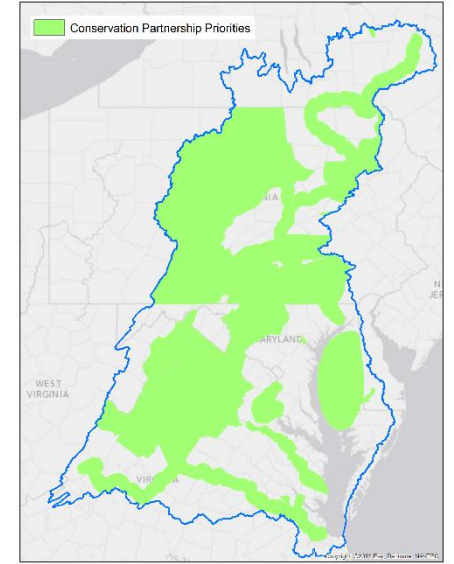
+

Stream
Health

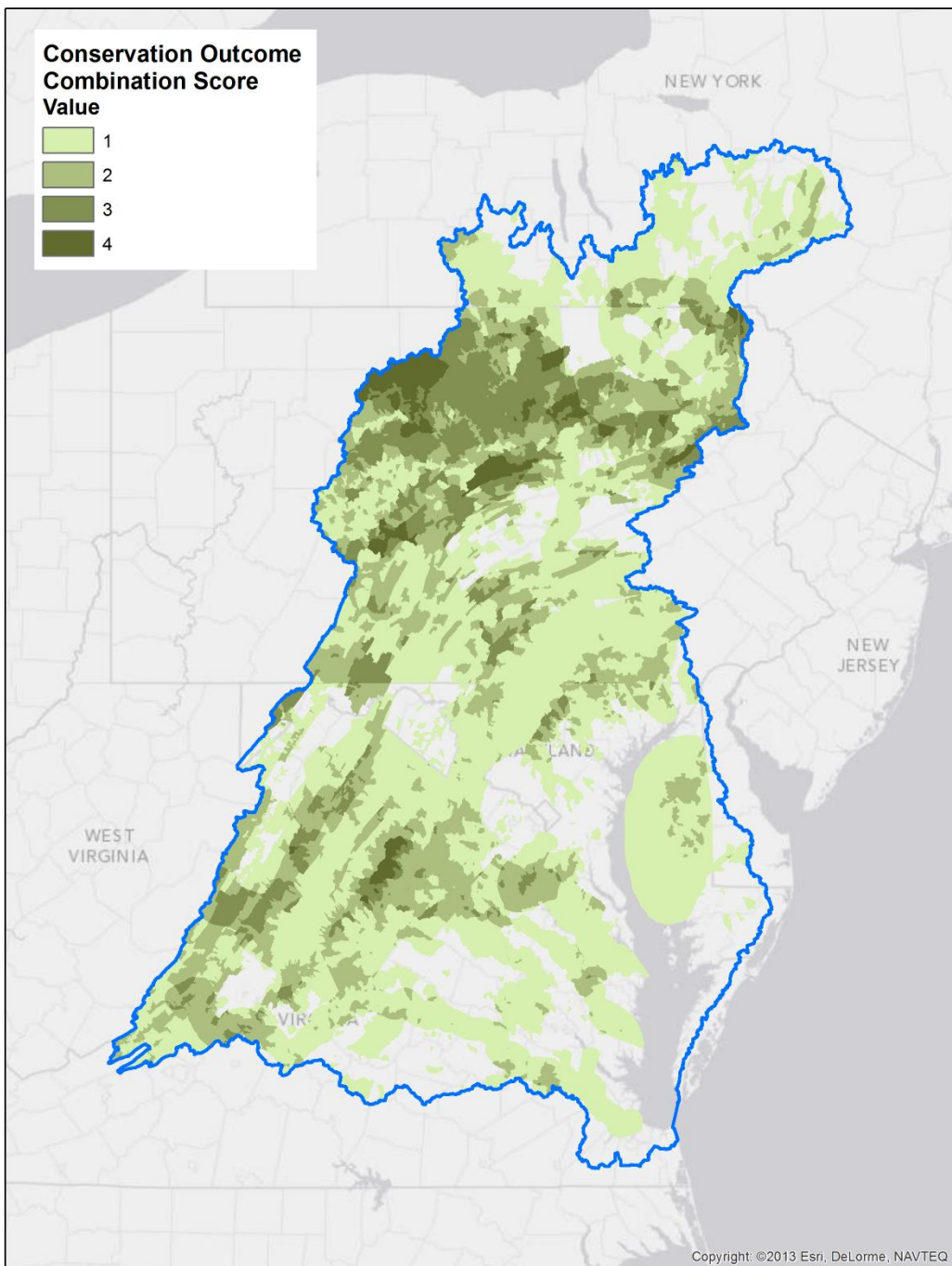


+

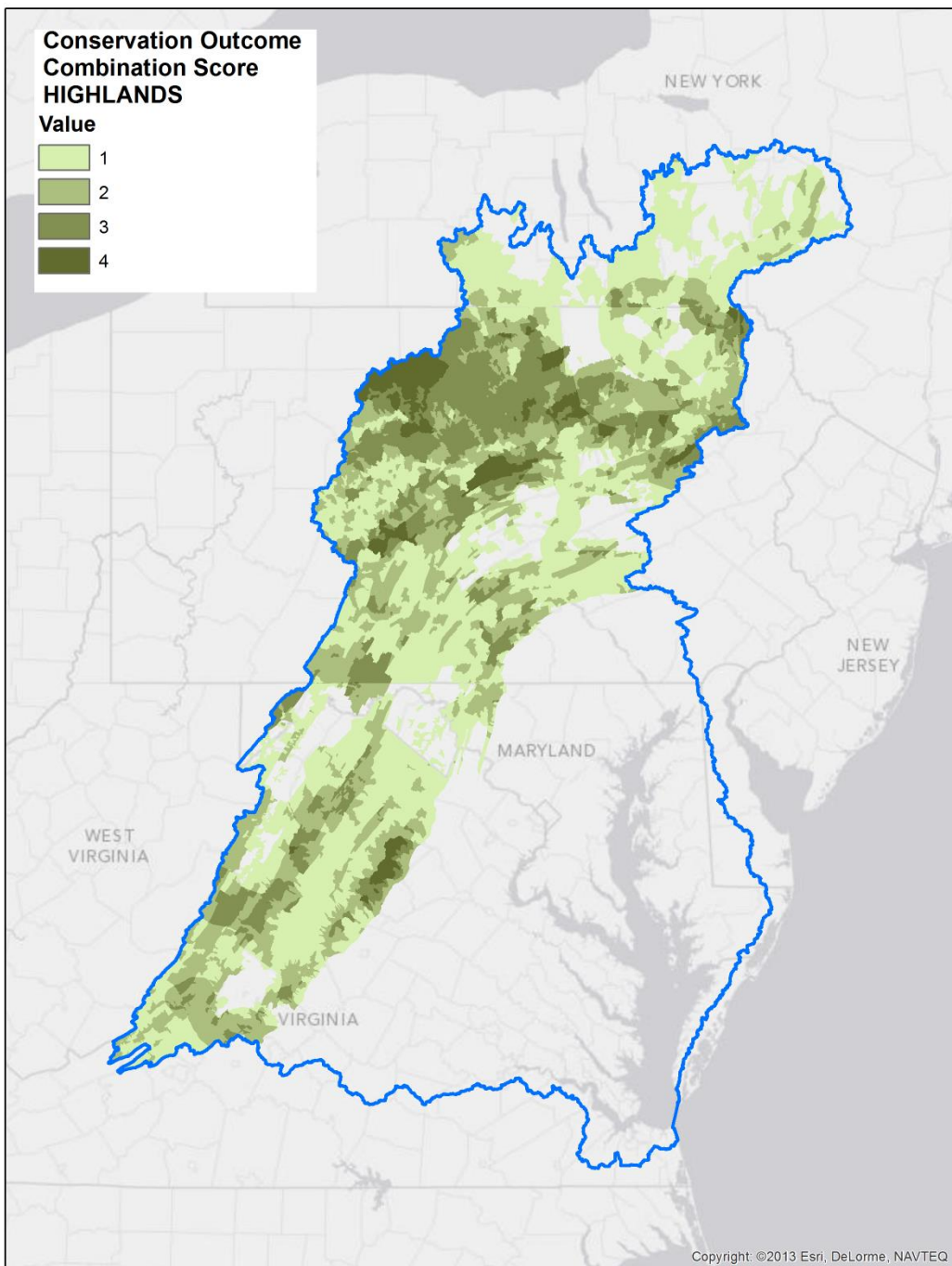
Conservation
Focal Areas



= ???

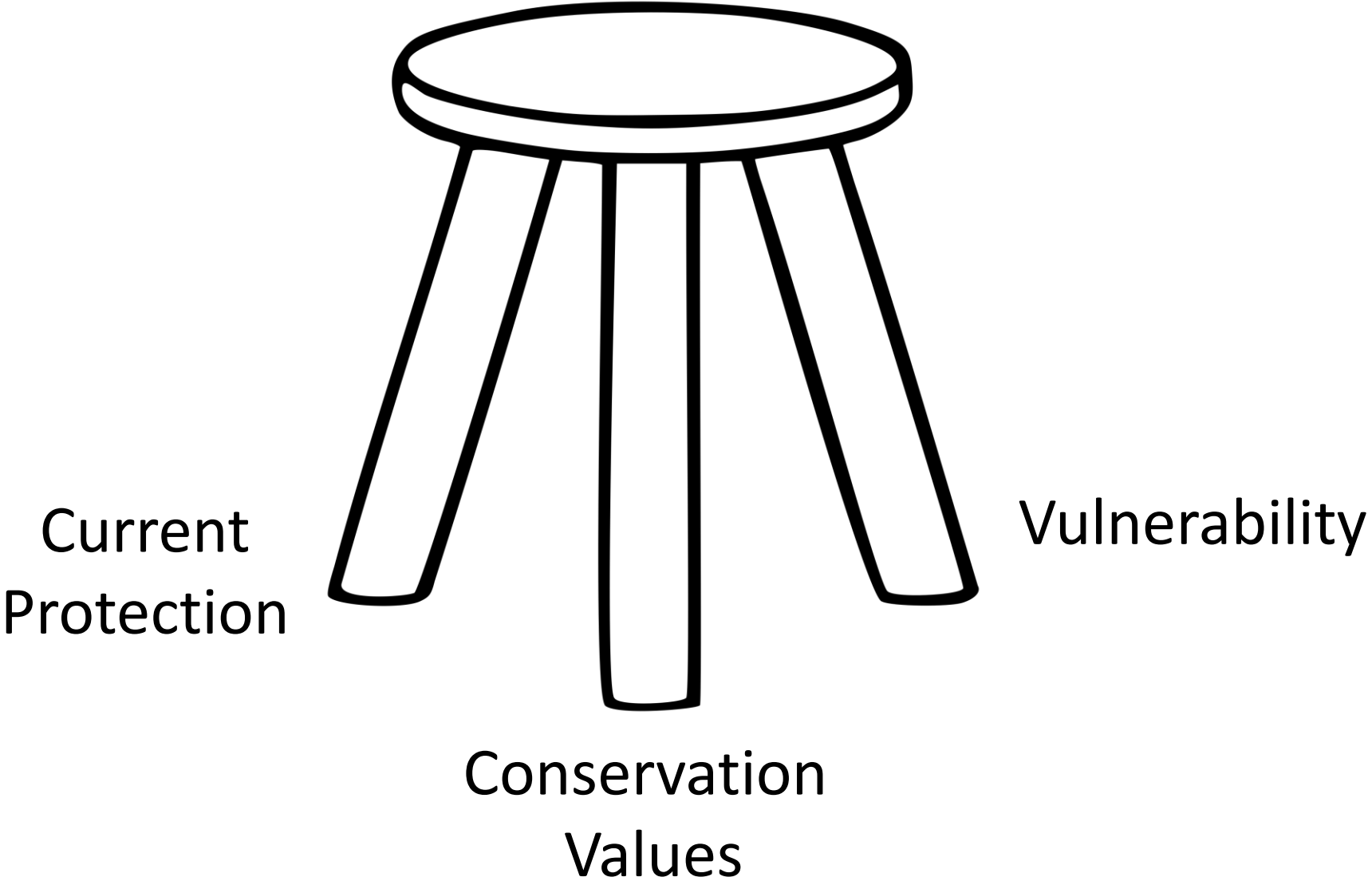


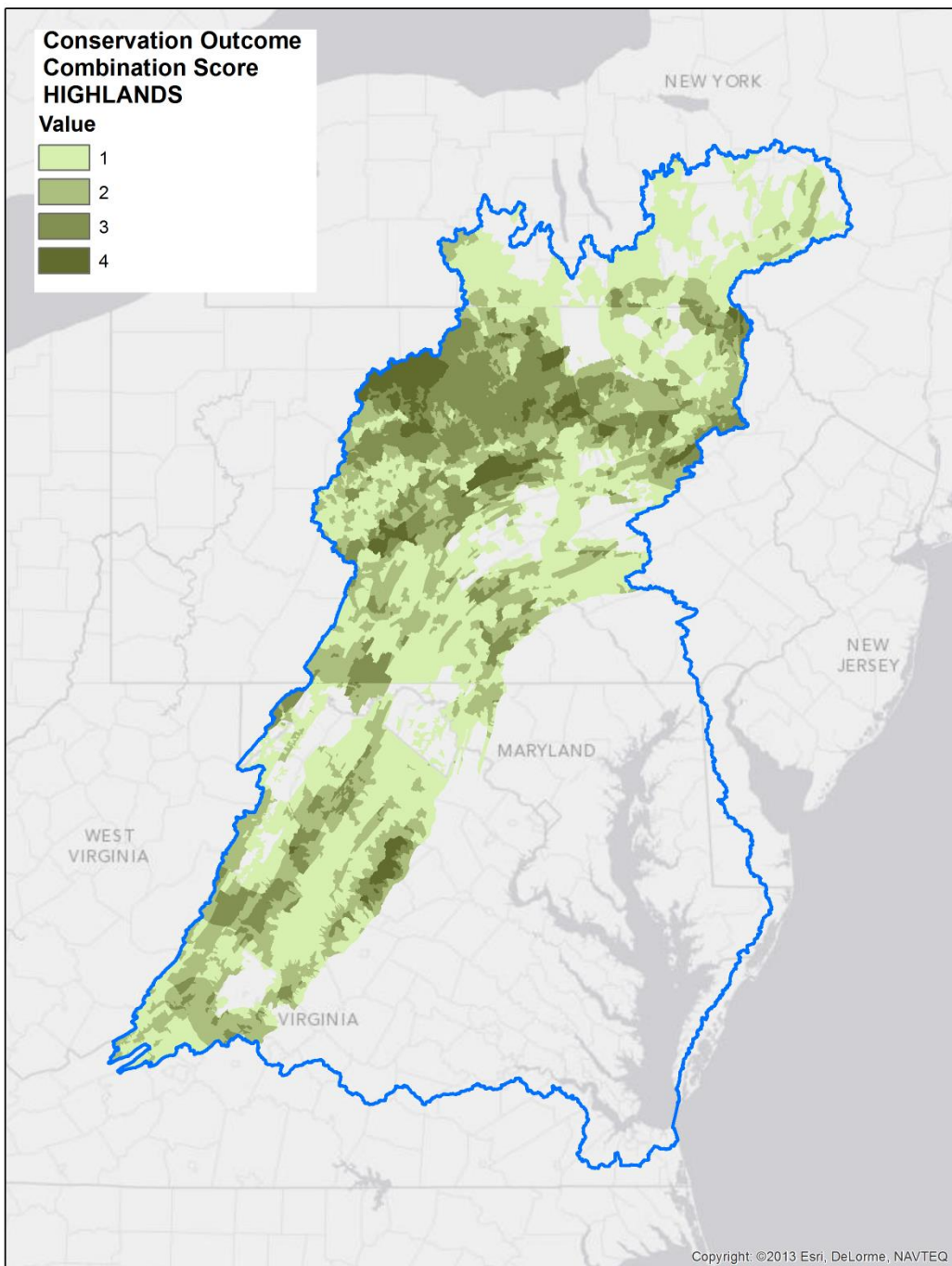
Number of Overlapping Priority Areas



Number of Overlapping
Priority Areas by
Physiographic Region

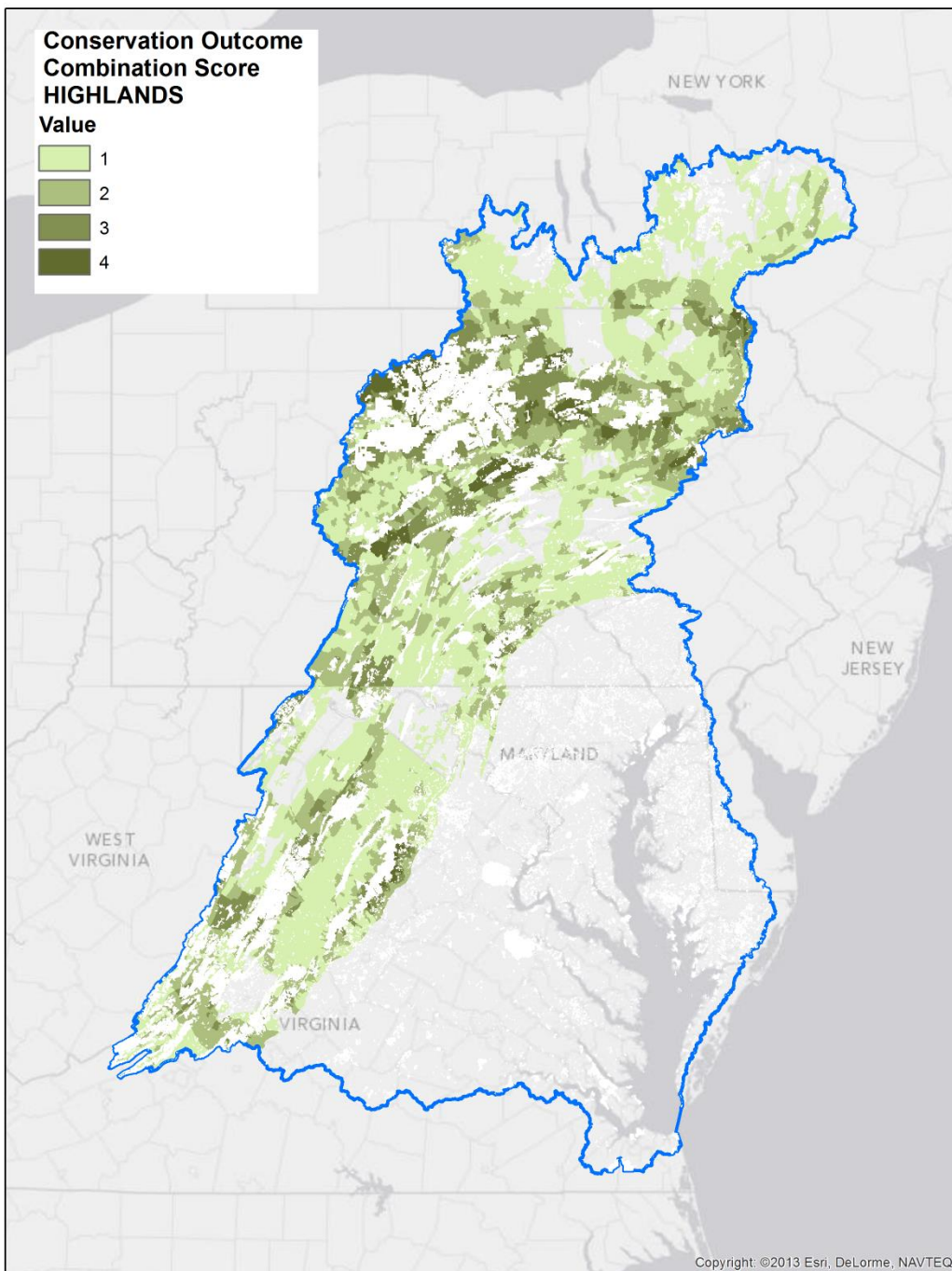
Highlands Example





Number of Overlapping
Priority Areas by
Physiographic Region

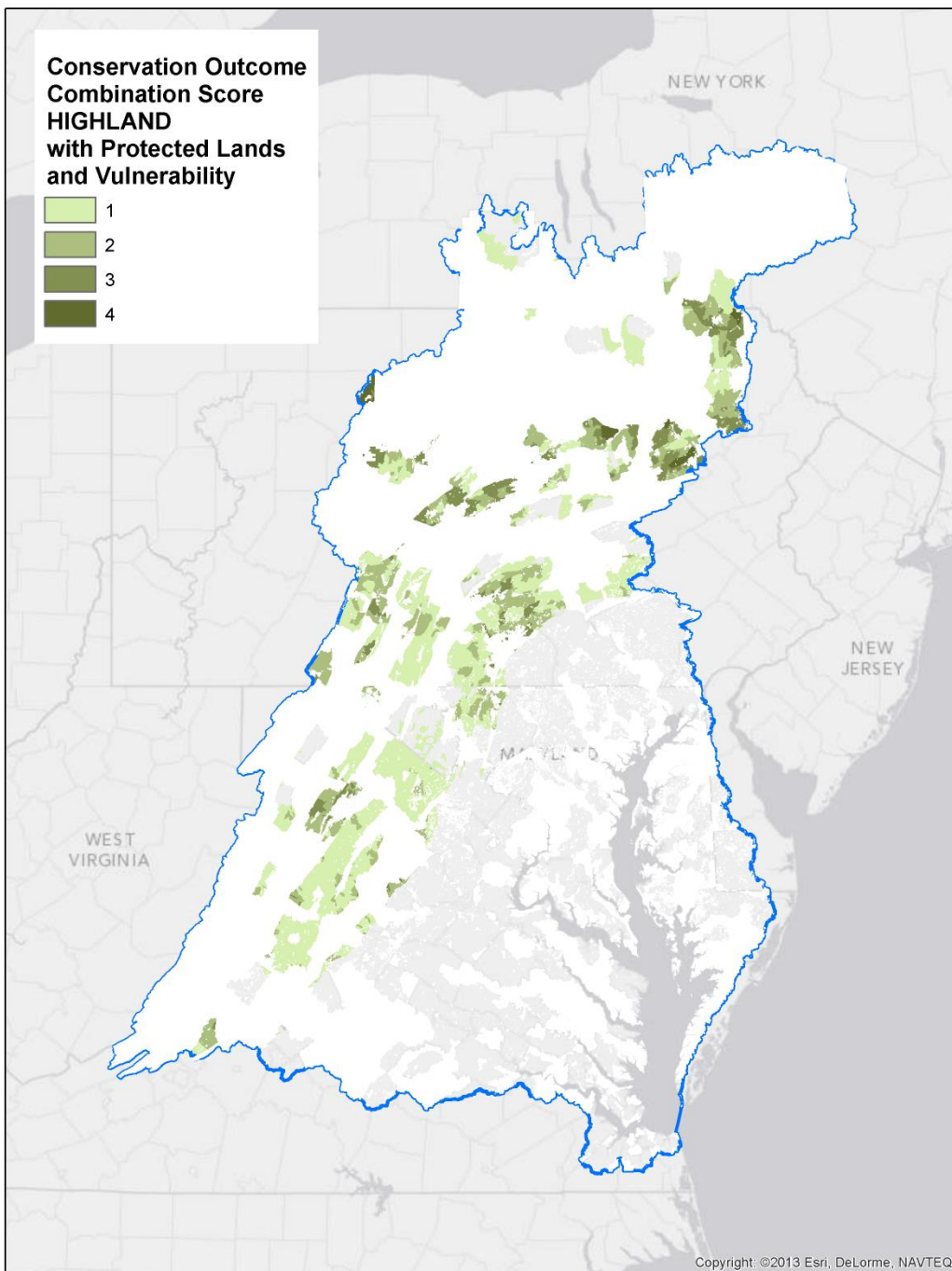
Highlands Example



Number of Overlapping
Priority Areas by
Physiographic Region

Highlands Example

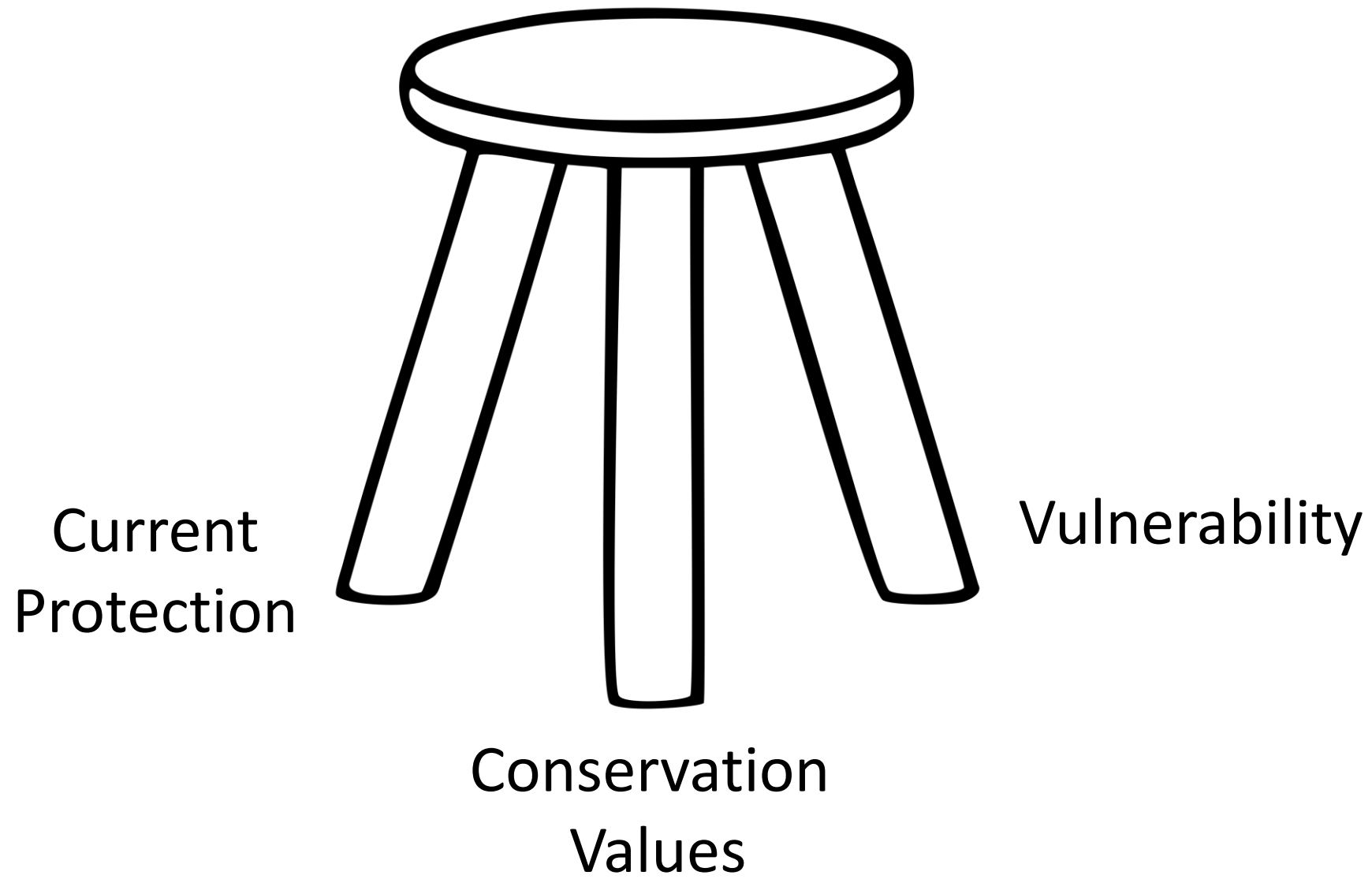
**Accounting for
Existing Protection**



Number of Overlapping
Priority Areas by
Physiographic Region

Highlands Example

**Accounting for
Existing Protection
and Vulnerability**



Summary of Issues/Guidance Needed

- What data to include
- Metadata wherever possible
- How to interpret or score data
- Area there interpretive differences based on physiographic region?
- Minimizing double counting