

Agenda

1:00 Welcome, Reintroducing ITAT-jurisdictional team goals and calendar (Blomquist)

1:15 Findings from small watershed studies (Webber)

2:15 Update on visualization tool development (Wolf)

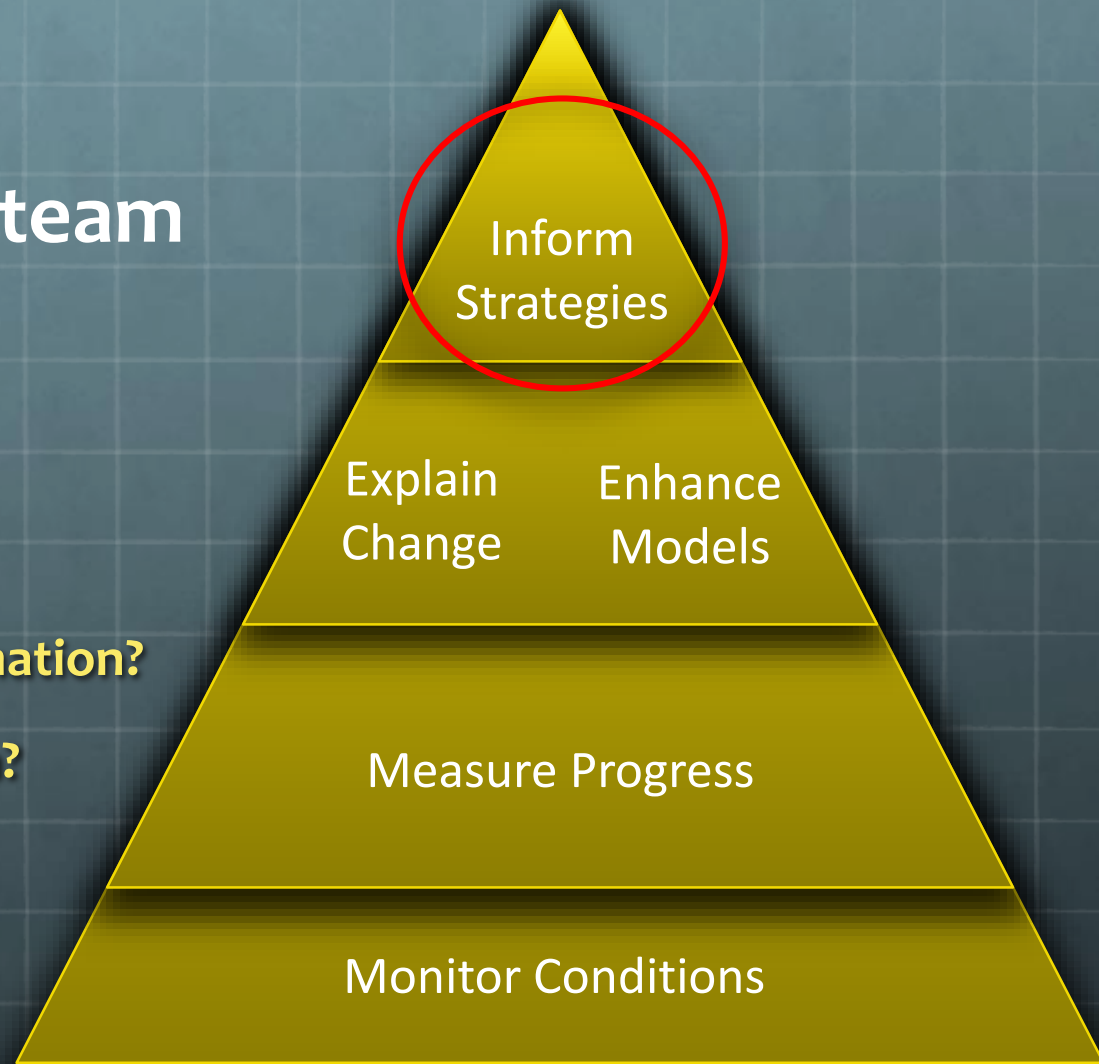
2:35 Regional SPARROW targeting- A different way of looking at loads (Blomquist)

2:50 Wrap up.

ITAT Jurisdictional team

How would you like your information?

Fire hose, funnel, or spoon?



ITAT-Jurisdictional Team

- Why:
 - Share and discuss technical results for use in water-quality decision making
- What:
 - Watershed and tidal trends
 - Explaining factors affecting trends, including practices
 - Inform Phase III WIPs and implementing practices,
 - Ways to assess progress
- Who: Lead investigators and jurisdictional reps.
- When: Monthly calls; bring selected items to GIT

ITAT Jurisdiction Team (not updated)

Name	Jurisdiction	Agency	Name	Jurisdiction	Agency
Diane Davis	DC	DOEE	James Davis-Martin	VA	DEQ
George Onyullo	DC	DOEE	Roger Stewart	VA	DEQ
John Schneider	DE	DNREC	David Montali	WV	DEP
Bruce Michael	MD	DNR	Karl Berger	Regional	MWCOG
Jason Keppler	MD	MDA	Mukhtar Ibrahim	Regional	MWCOG
Jim George	MD	MDE	Tanya Spano	Regional	MWCOG
Lee Currey	MD	MDE	Jennifer Keisman	FED	USGS
Jason Dubow	MD	MDP	Joel Blomquist	FED	USGS
Sara Latessa	NY	DEC	Scott Phillips	FED	USGS
Amy Williams	PA	DEP	John Wolf	FED	USGS
Veronica Kasi	PA	DEP	Doug Moyer	FED	USGS
Kristen Wolf	PA	DEP			

Jurisdictional Team Schedule (DRAFT)

- January 30, 2017
 - Small-watershed results and implications for MPA—Webber and Hyer
 - Follow-up on Visualization tool – Wolf * not confirmed *
 - Reintroduction to SPARROW targeting—Blomquist
- March 6, 2017
 - RIM synthesis (or components) Joel Doug
 - Ag source change -- Jenni
 - BMP histories – Andy S.
- April 3, 2017
 - Understanding Decadal Trends in Nitrogen and Phosphorus Loads— Ator
 - Groundwater lag story—Judy- Ward
- May1, 2017
 - Regional trends component- or overview Ator, Webber, Chanat
 - Something from Trends in the Estuary—Murphy
- June 5, 2017
 - Sediment/ geomorphic synthesis components. (Probably need sooner than later)
- July 10* 2017
 - NTN results through 2016 – at least preliminary findings – how much detail on 2014-2016
- August 7 2017
 - New insights from linking lag times with regional SPARROW models- Smith
- September 11*, 2017
 - Insights from linking changes in source inputs to changes in riverine export: a different way to explain change- Chanat
- October 2, 2017
- November 6, 2017
- December 4, 2017
 - Evaluate role of J team into 2018?