

A photograph of a dense forest with many thin tree trunks and green foliage, serving as the background for the top half of the slide.

# Accelerating Wetland Restoration through Partnerships and Landowner Engagement (DE, MD, PA, VA)

A photograph of a wetland area with a small stream, tall grasses, and various plants, serving as the background for the bottom half of the slide.

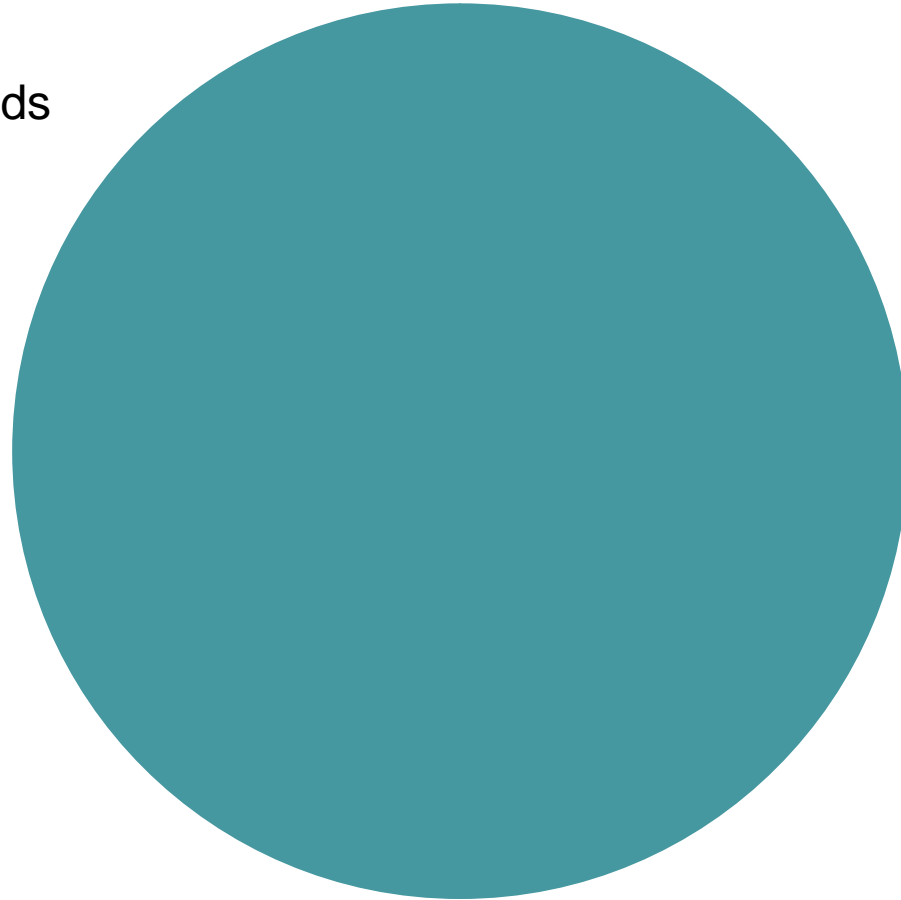
Chesapeake Bay Wetlands Workgroup  
February 15, 2022

Amy Jacobs, The Nature Conservancy  
Chase Colmorgen, Ducks Unlimited

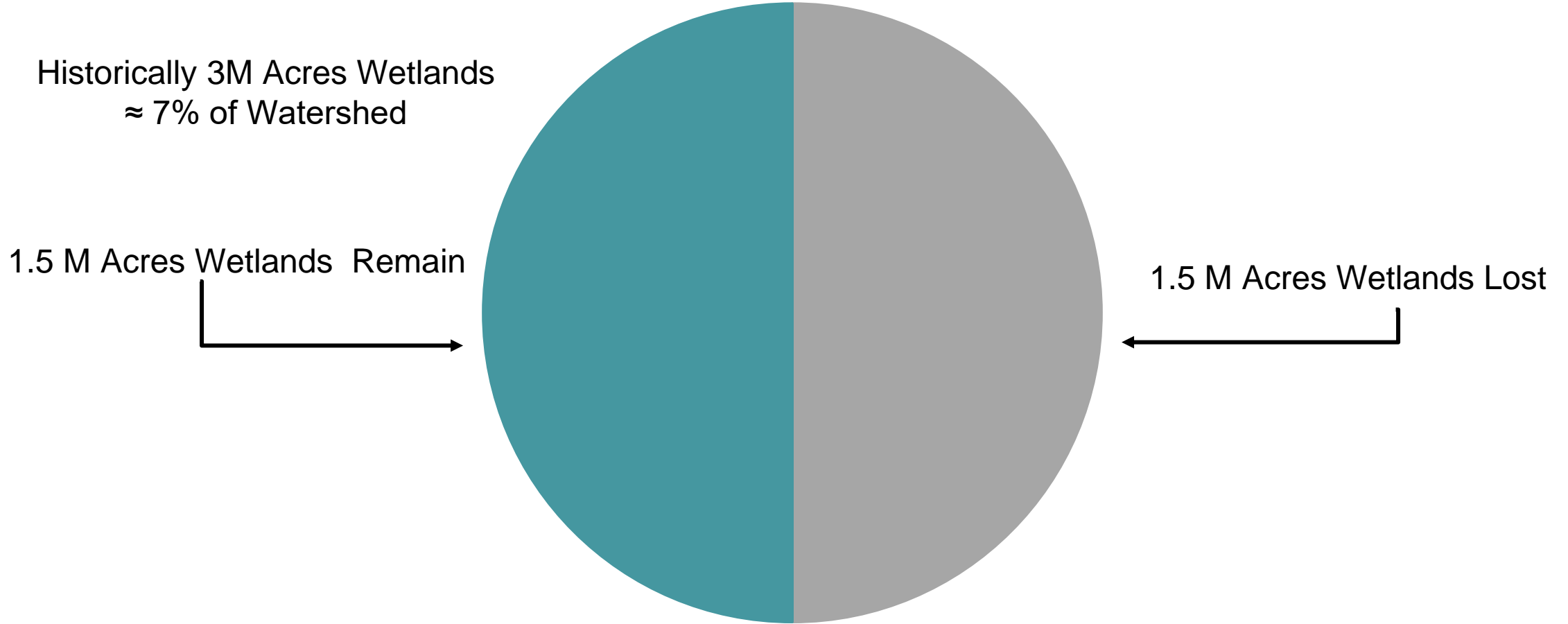


# Chesapeake Bay Wetlands

Historically 3M Acres Wetlands  
≈ 7% of Watershed



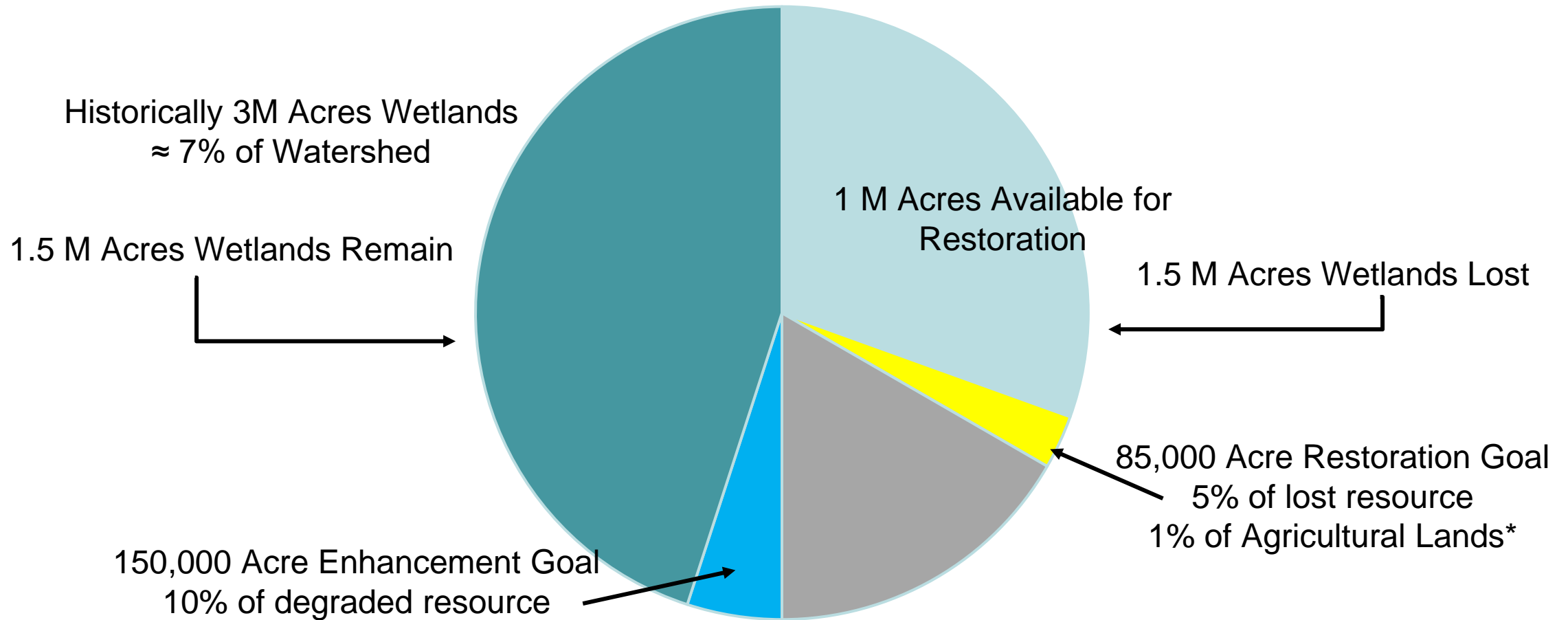
# Chesapeake Bay Wetlands



# Chesapeake Bay Wetlands

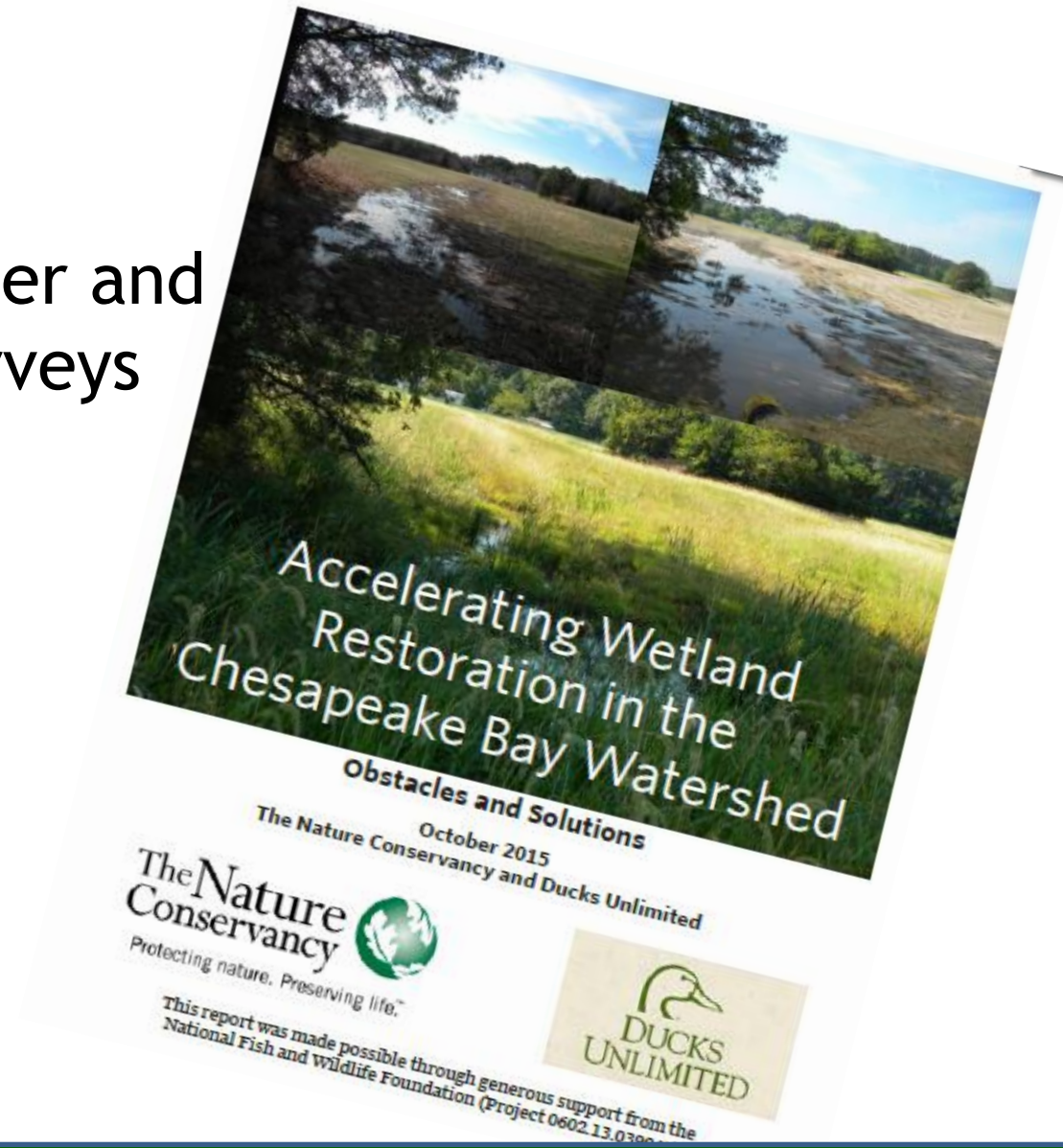


# Chesapeake Bay Wetlands



\* Calculated based on 83,000 ac. Of goal on agricultural lands, 8,320,297 ac agricultural lands based on CAST data 2020

# Wetland Landowner and Stakeholder Surveys





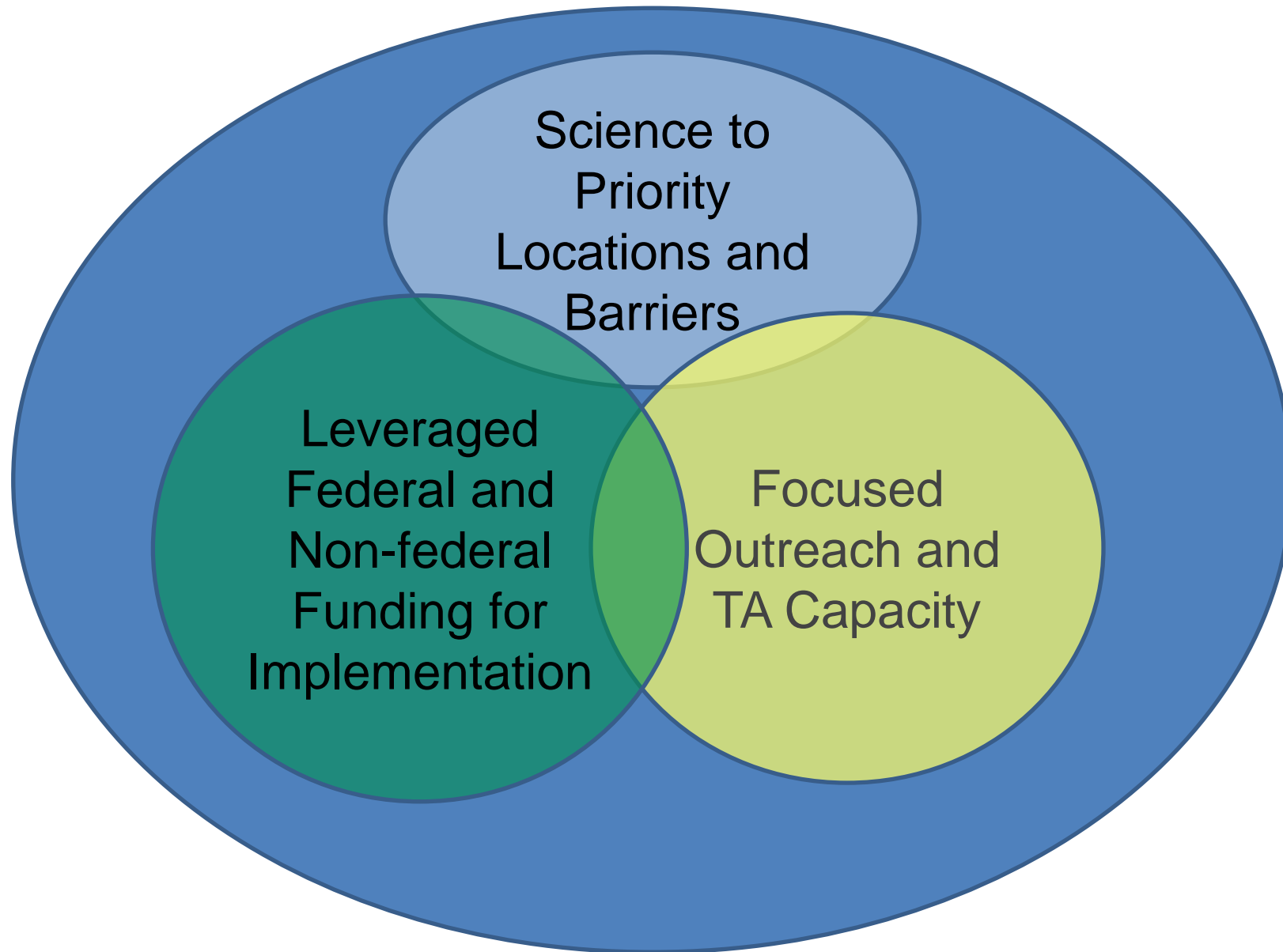


3,756 Acres  
Wetlands Restored  
or in Process since  
2014





# Accelerating Progress toward CBP Wetland Restoration Goals





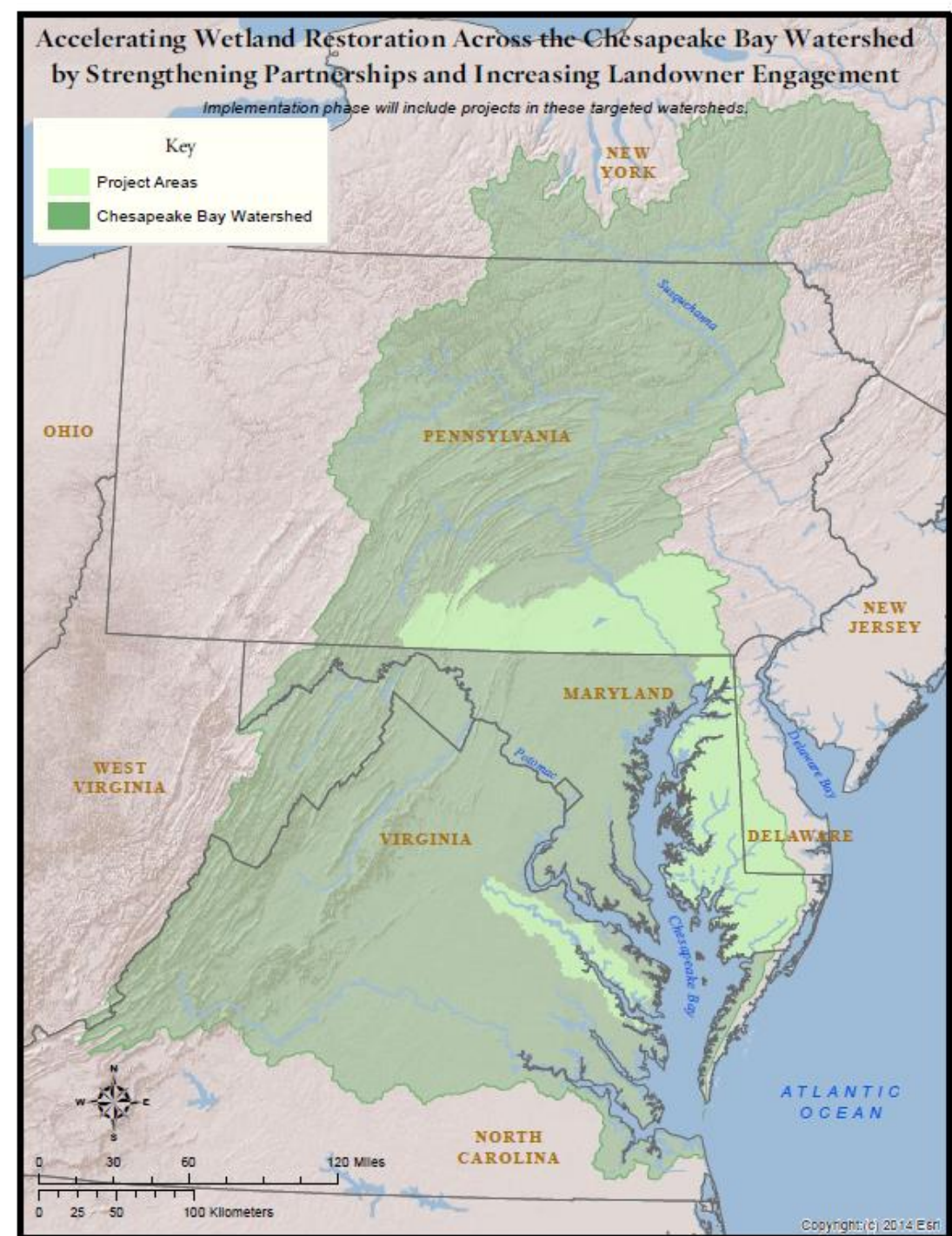
# Partnerships





# Fostering Partnerships and Learning

- Delmarva
- South-Central Pennsylvania
- Rappahannock Watershed, Virginia

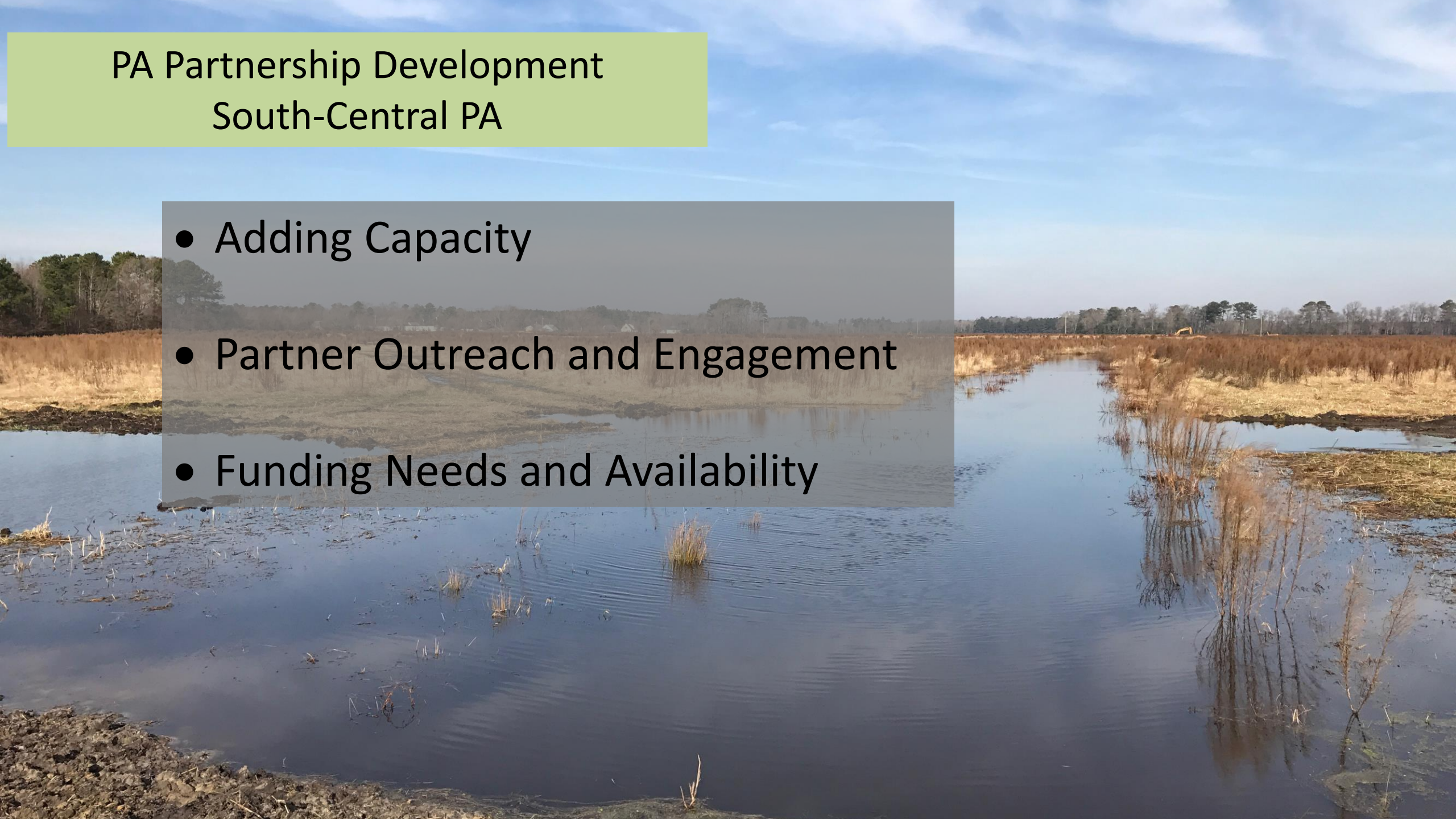




# PA Partnership Development

## South-Central PA

- Adding Capacity
- Partner Outreach and Engagement
- Funding Needs and Availability





# VA Partnership Development Rappahannock

- Partner Engagement
- Adding Capacity
- Identifying Priority Areas

