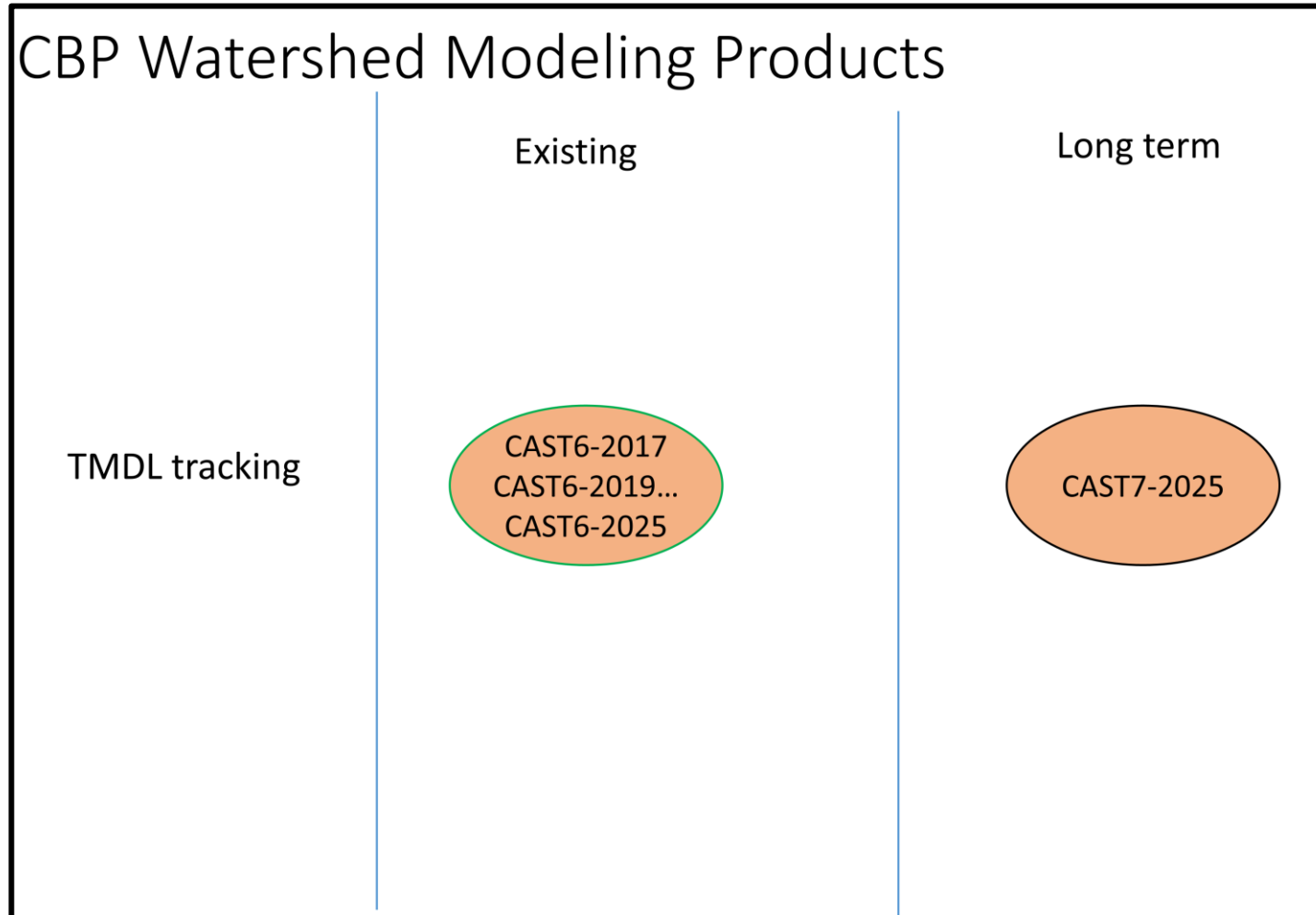


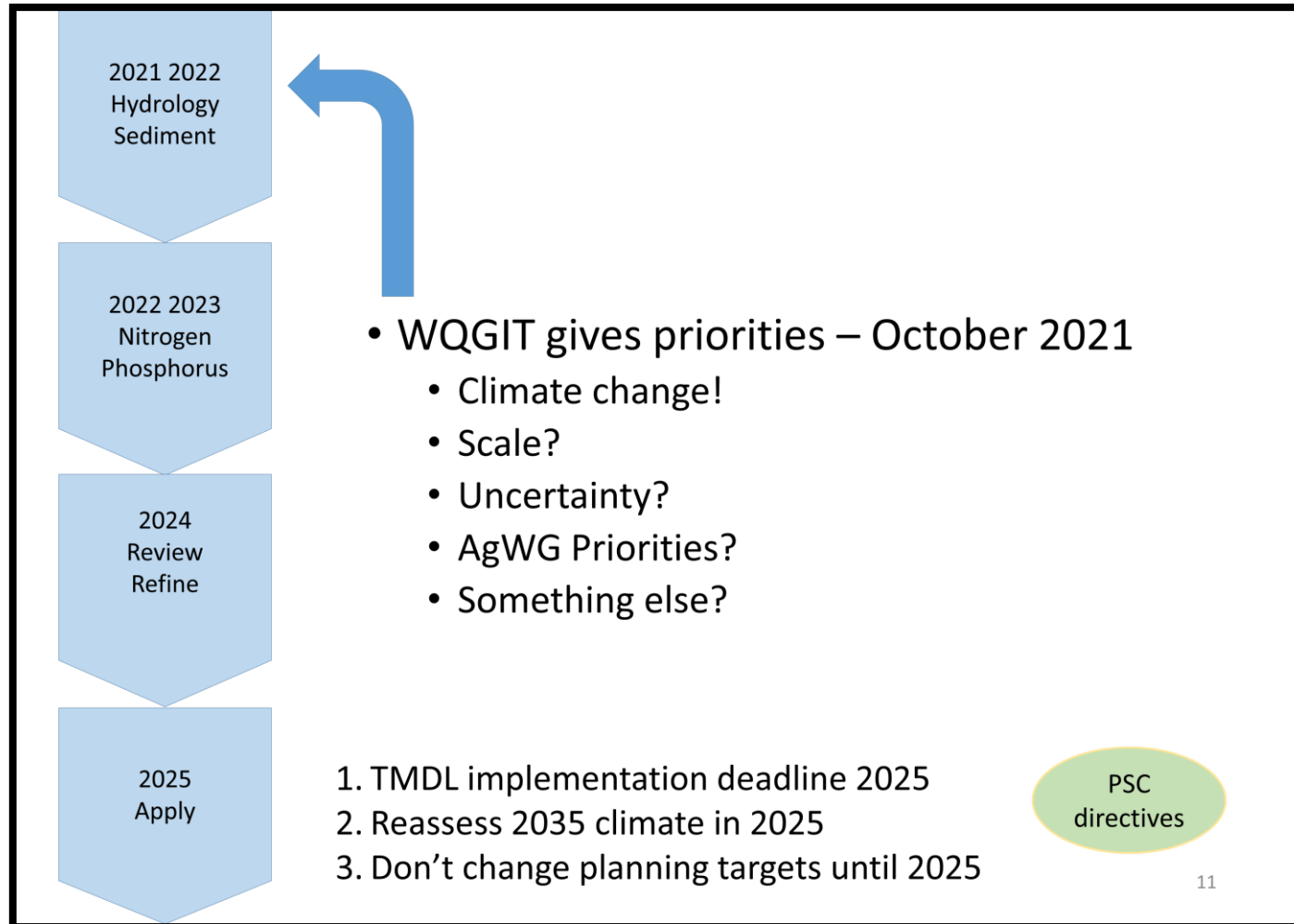
Looking Forward:
Phase 7 Watershed Model (CAST)
AgWG Priorities

August 19, 2021

July 2021 Phase 7 Presentation



2025 Timeline



Key Points

Phase 7 Development Years Limited to 2021, 2022, & 2023.

→ limits scope of change for delivery by **end of 2023.**

Prioritization Necessary

→ Choices should be made on basis of anticipated partnership decisions in 2025 & beyond.

→ Prioritization may be revisited as work and the decision process progresses.

What, Who, When, How...

Phase 6 Development: Agricultural Modeling Subcommittee (AMS)

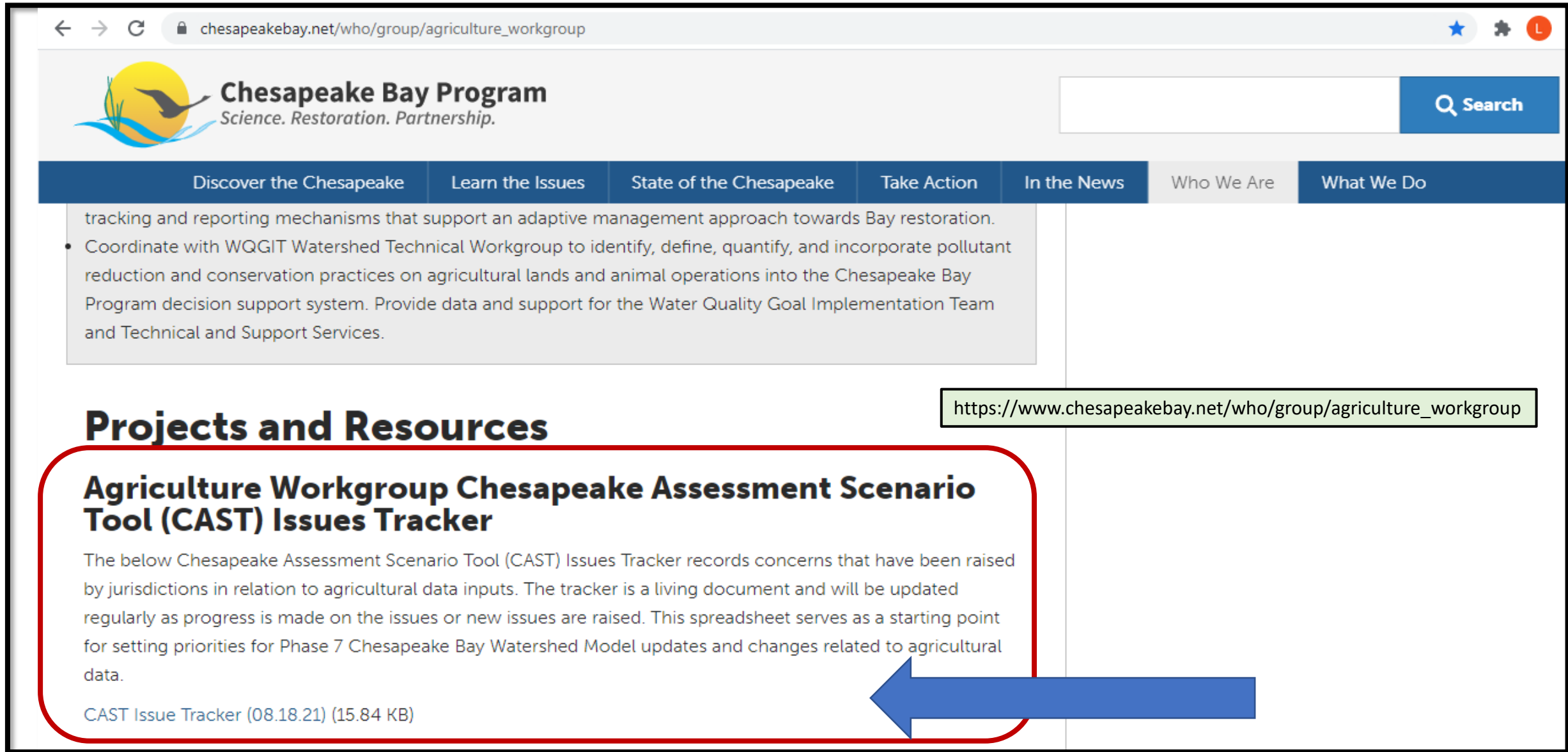
- Purpose: provided enhanced agricultural modeling assistance to support the Ag WG on technical decisions regarding the development of the Phase 6 modeling tools.
- Members: USDA-ARS, USGS, Academic Institutions, State Agencies, NGOs
- Recommendations brought to AgWG for Approval
 - [Decisions on Phase 6 Chesapeake Bay Program Model 2015-2017](#)

What, Who, When, How...


Phase 7 Development: ?

- Purpose: Provide enhanced agricultural modeling assistance to support the Ag WG on technical decisions regarding the development of the Phase 7 modeling tools.
- Needed Expertise: Ag Modeling & Ag Management Systems
- Recommendations to AgWG for Approval

Prioritizing Concerns (Post- CAST-21)



← → ↻ chesapeakebay.net/who/group/agriculture_workgroup

 **Chesapeake Bay Program**
Science. Restoration. Partnership.

Search

Discover the Chesapeake Learn the Issues State of the Chesapeake Take Action In the News Who We Are What We Do

tracking and reporting mechanisms that support an adaptive management approach towards Bay restoration.

- Coordinate with WQGIT Watershed Technical Workgroup to identify, define, quantify, and incorporate pollutant reduction and conservation practices on agricultural lands and animal operations into the Chesapeake Bay Program decision support system. Provide data and support for the Water Quality Goal Implementation Team and Technical and Support Services.

Projects and Resources

Agriculture Workgroup Chesapeake Assessment Scenario Tool (CAST) Issues Tracker

The below Chesapeake Assessment Scenario Tool (CAST) Issues Tracker records concerns that have been raised by jurisdictions in relation to agricultural data inputs. The tracker is a living document and will be updated regularly as progress is made on the issues or new issues are raised. This spreadsheet serves as a starting point for setting priorities for Phase 7 Chesapeake Bay Watershed Model updates and changes related to agricultural data.

CAST Issue Tracker (08.18.21) (15.84 KB)

https://www.chesapeakebay.net/who/group/agriculture_workgroup

Additional Questions & Concerns



Fall 2021 AgWG

- Prioritizing needs for Phase 7 Watershed Model

Oct 25/26 WQGIT

- Science needs for Phase 7