

Final Phase 6 Land Use Database Project Plan

July, 06 2016

**Peter Claggett, Fred Irani, Quentin Stubbs, Renee Thompson
US Geological Survey
Eastern Geographic Science Center**

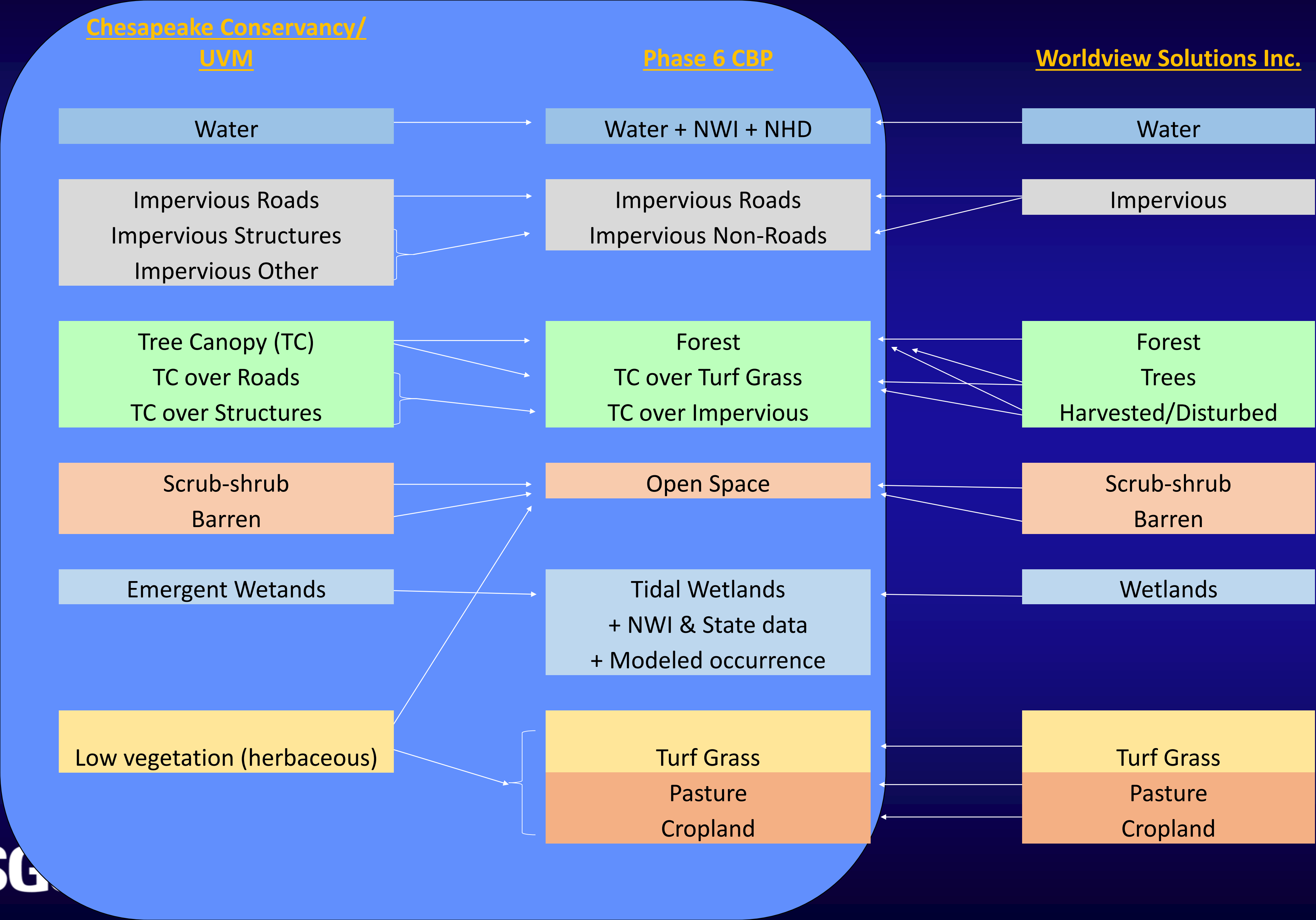
Overview

- **USGS Process Development Status**
- **Work Plan**
- **Schedule**

High Resolution LU Process

- Dec '15 – July '16 Automate Steps to:
 - Perform Cross Walk to Create 13 Classes at 1 Meter Resolution:
 - Impervious Road,
 - Impervious Non-Road
 - Tree Canopy over Impervious
 - Tree Canopy over Turf Grass
 - Turf Grass
 - Forest
 - Mixed Open
 - Pasture,
 - Crop
 - Tidal, Floodplain, and Other Wetlands (3 Layers)
 - Water

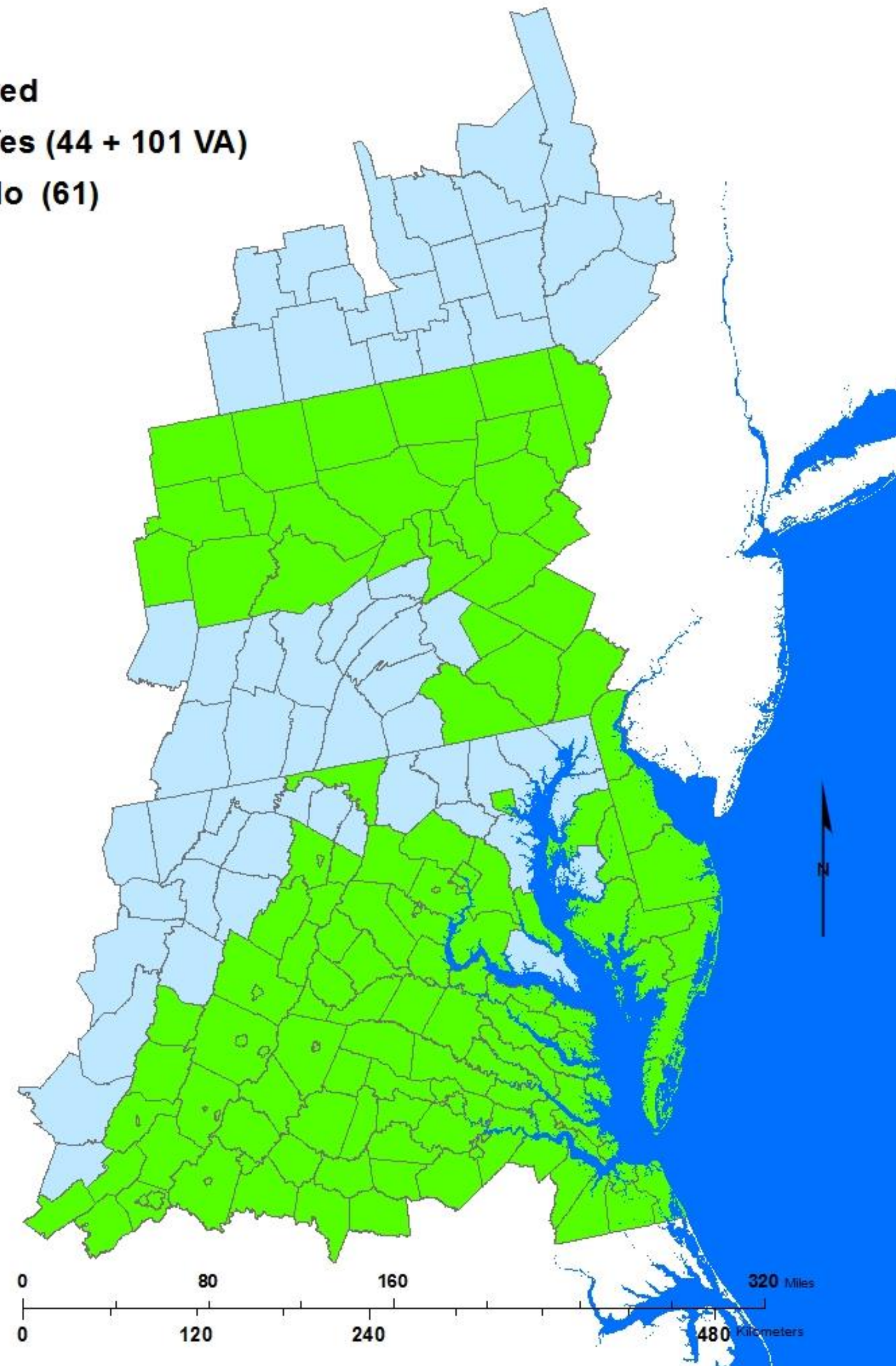
Data Cross walk



Delivered

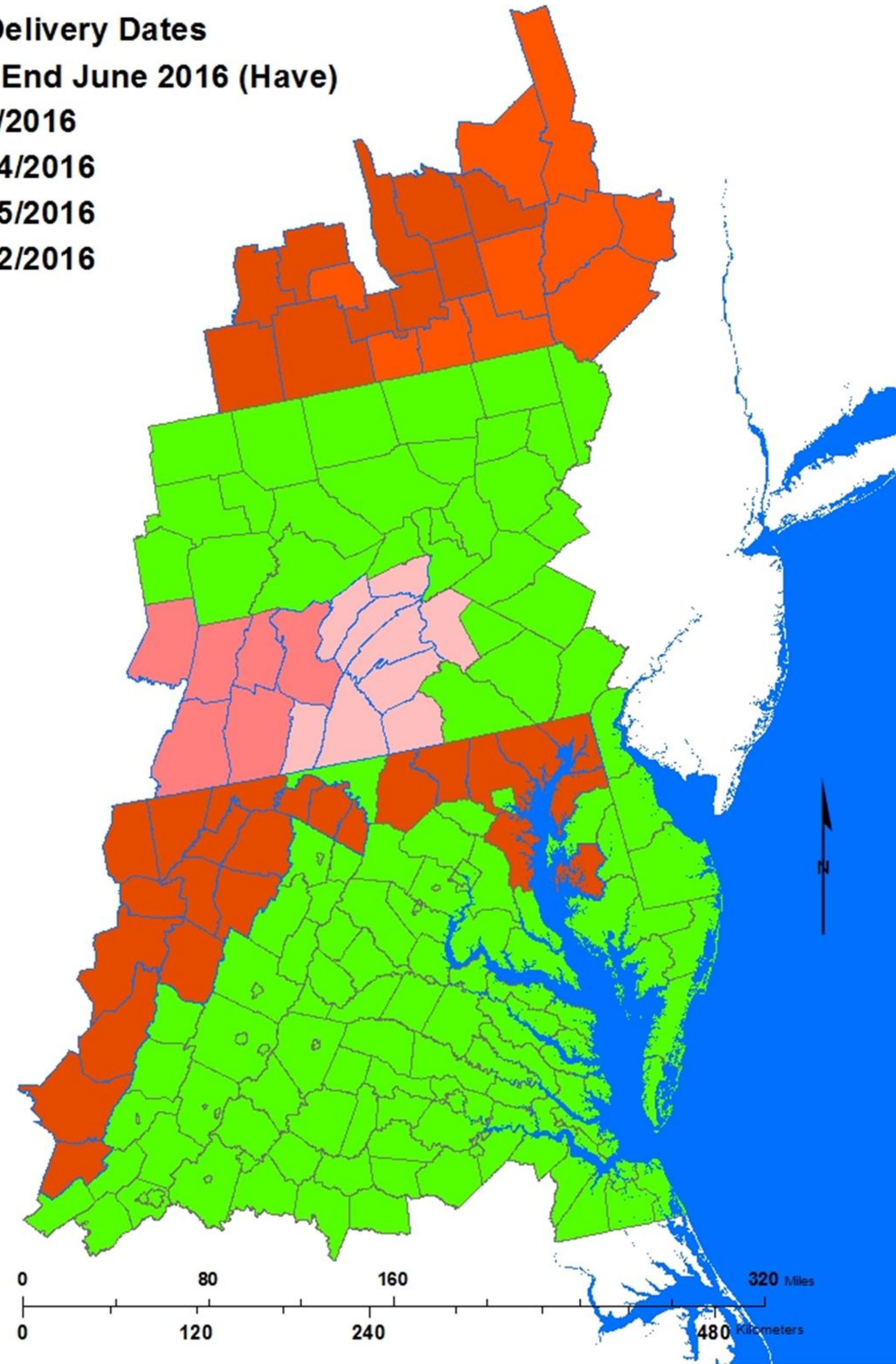
 **Yes (44 + 101 VA)**

 **No (61)**



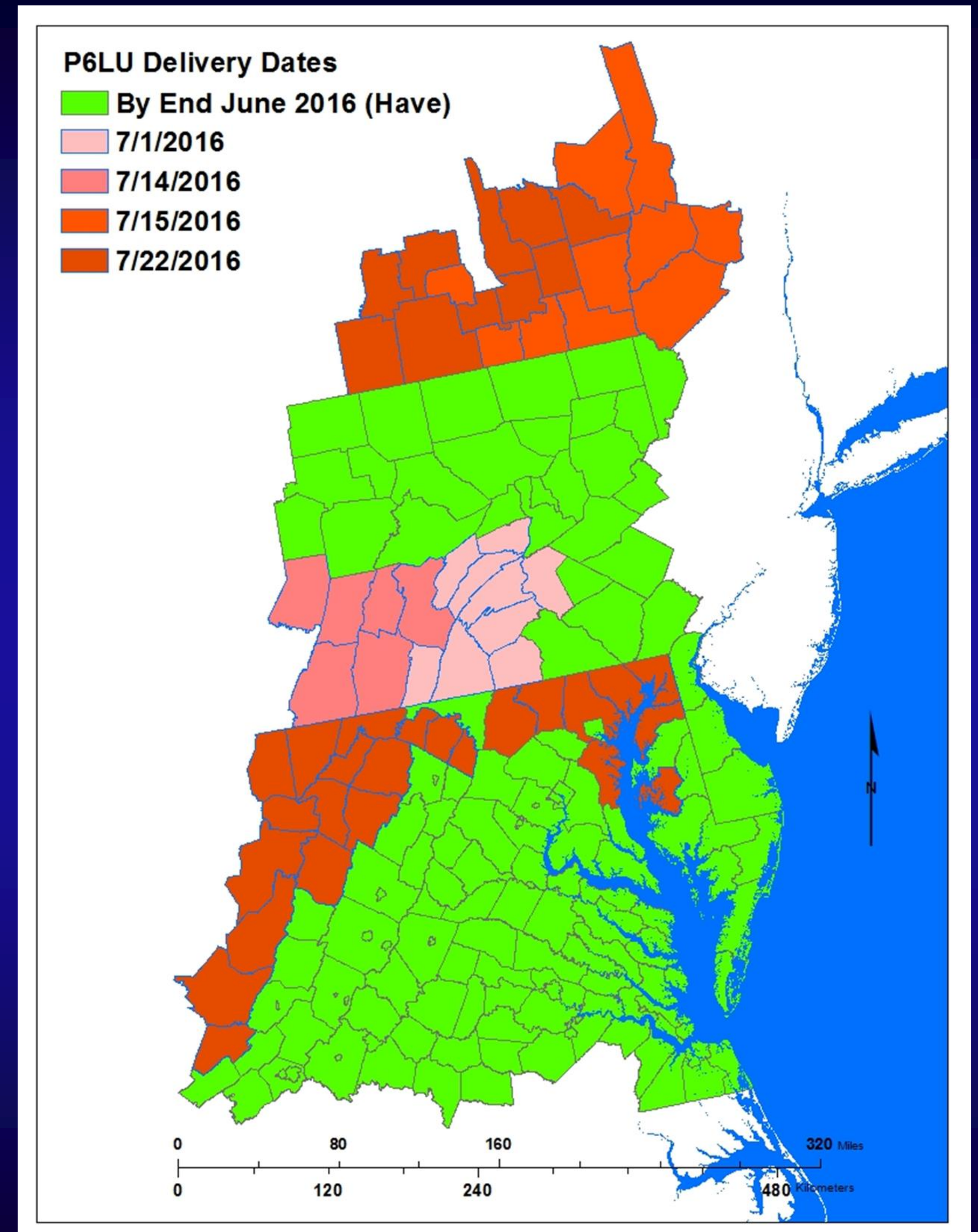
P6LU Delivery Dates

- By End June 2016 (Have)
- 7/1/2016
- 7/14/2016
- 7/15/2016
- 7/22/2016

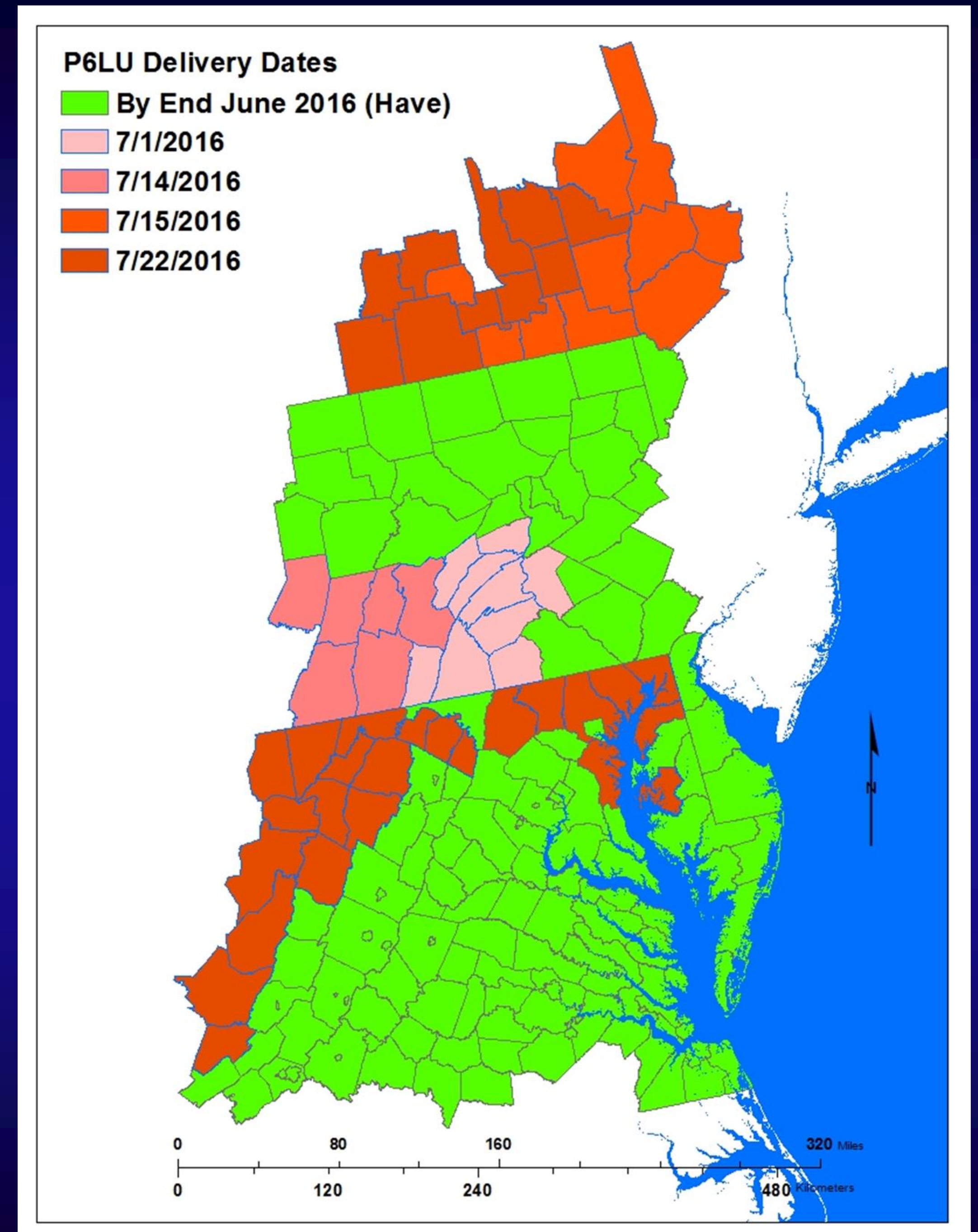


- For Each of 206 Counties Masks Rasterized from Derived Regional Vector Data:

- Rail RoW
- Extractive / Land Fill
- Federal Lands
- Nav Tec Turf
- Nav Tec Fractional
- Nav Tec Beach (Mixed Open)
- Open Water (NWI)
- Street Right of Ways
- Crop and Pasture Masks

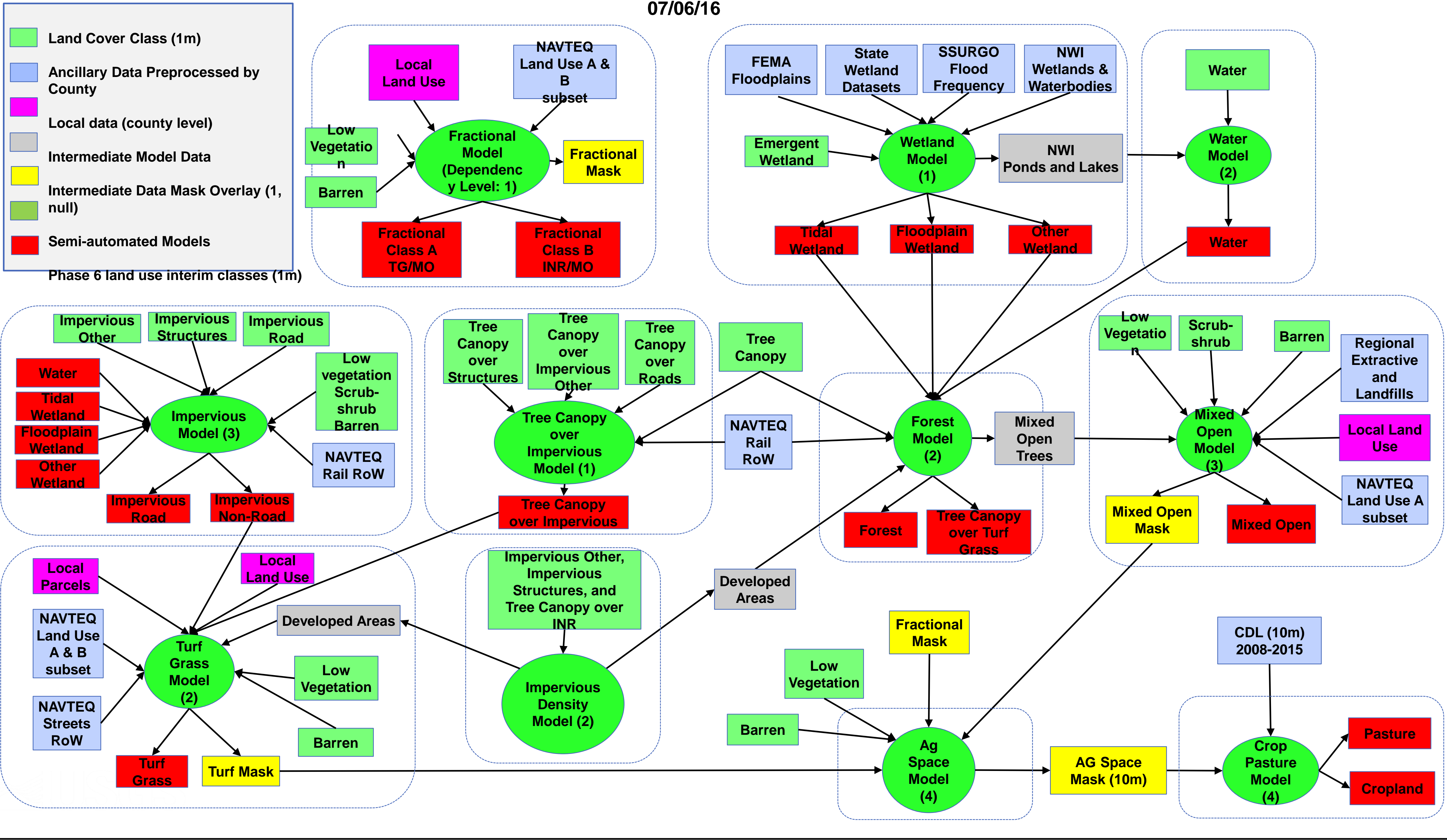


- For Each of 41 Delivered Data Counties Intermediate and Final 1 Meter Masks:
 - Non-Road Impervious Density
 - Developed Area Masks
 - Floodplain, Tidal, Other and All Wetland Masks
 - Impervious Rail (Running)
 - Water
 - Tree Canopy Over Impervious
 - Other intermediate Masks
- Reduce the Number of Models that Analysis Must Run per County, Or
- Significantly Reduce the Number of Steps to be run by each model



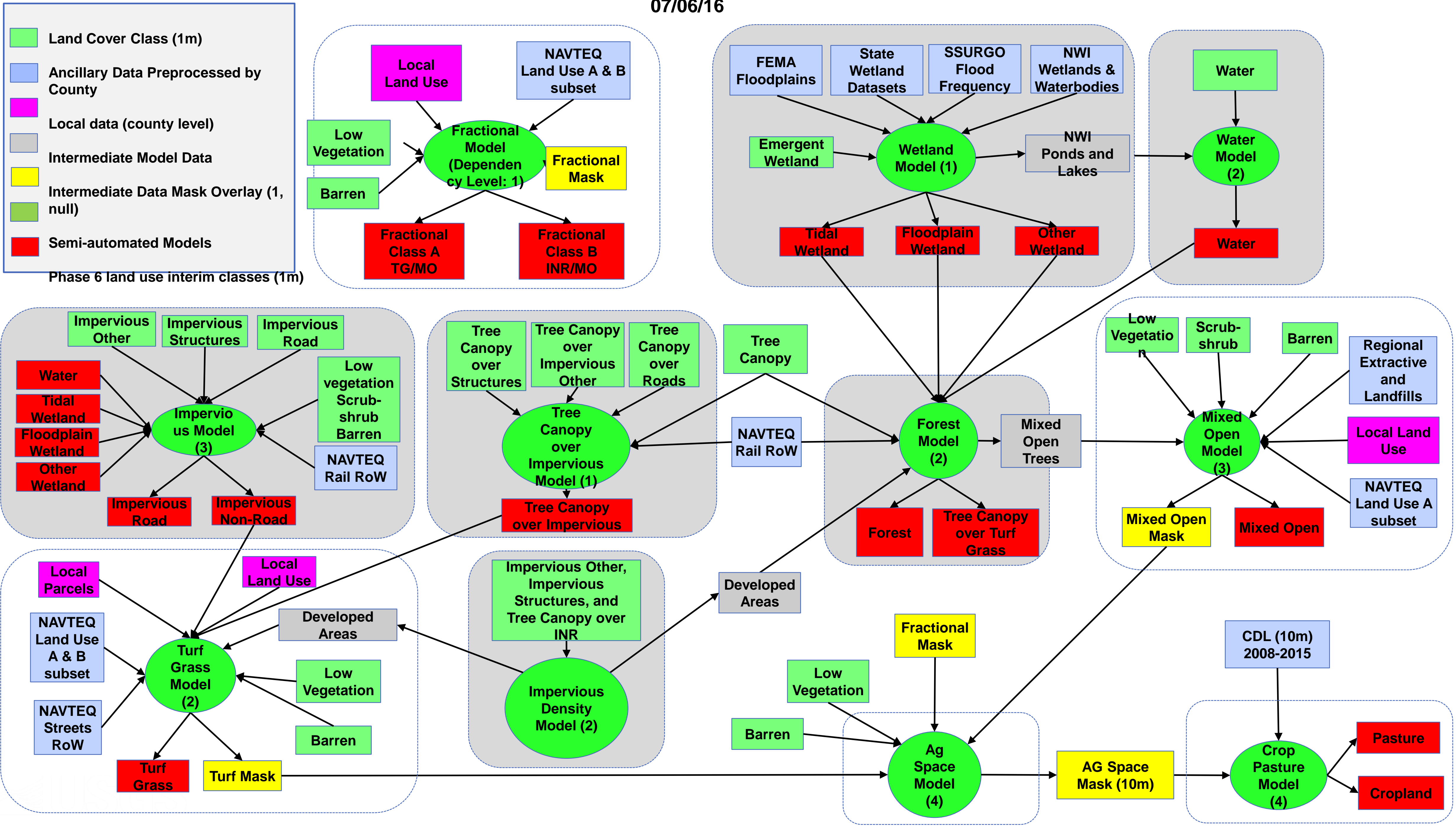
Phase 6 Land Use Development Process

07/06/16



Phase 6 Land Use Development Process

07/06/16



Production Schedule

Models Still to be Finalized Waiting on Local Data Masks:

- Mixed Open
- Turf Grass
- Ag Space
- Crop / Pasture
- Fractional
- Can be completed in the next couple of days, given Data

Production Schedule

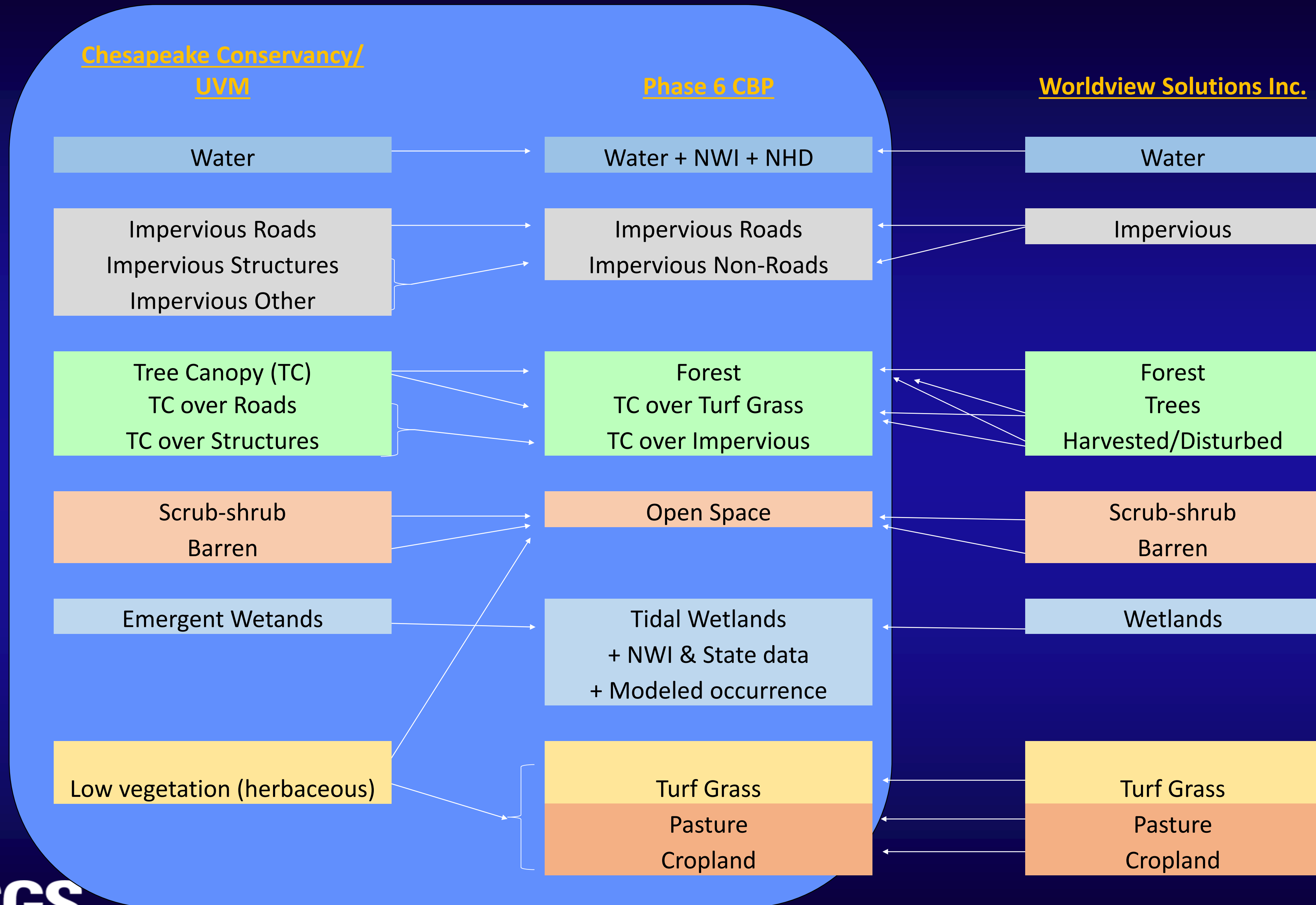
■ Resources

- 2 FT + 8 PT Analysts = ~ 6 FT Analyst Hours per Week
 - Or ~ 12 Analyst Hours per County
- Potential for More Analysts from Chesapeake Conservancy
- Assume 3 COs per Week per FT Analyst = 18 COs Per Week
 - Prototype Delaware Cos to be completed this week to provide timing benchmark.

Production Schedule

- **206 Counties / 10 Weeks (July – Sept) = 20 COs per Week**
 - **Rolling Delivery – Review – Final Delivery Schedule**
- **COs to be Processed by State in the Following Order:**
 - 1. Delaware**
 - 2. DC**
 - 3. Maryland**
 - 4. Pennsylvania**
 - 5. West Virginia**
 - 6. New York**
 - 7. Virginia**

VA Data Cross walk



Production Schedule

- Full Blown Processing will Start on July 18
- Virginia Procedure will be Developed While Other States are Processed

“Final” Final Deadline

- October 2016 To Finish Everything
 - 10 Meter Aggregation
 - Responses to County Reviews
 - VA Tree Canopy Integration
 - PA Wetland Integration
 - Percentage per Multi-Cell Check
 - Accessible to Public

Contact Information:

Fred Irani, USGS- EGSC
Chesapeake Bay Program Office
410 Severn Ave, Suite 109
Annapolis, MD 21403

410-267-9845

firani@usgs.gov

firani@Chesapeakebay.net

<http://www.chesapeakebay.net>

<http://chesapeake.usgs.gov/>

<http://egsc.usgs.gov/>