

Objective 1 Updates

September 2, 2020: LUWG

Rachel Soobitsky

rsoobitsky@chesapeakeconservancy.org

CBP External Webinar

September 9th, 10- 11:30 am

End of Year 2 and looking forward to Year 3 on all 4 Objectives

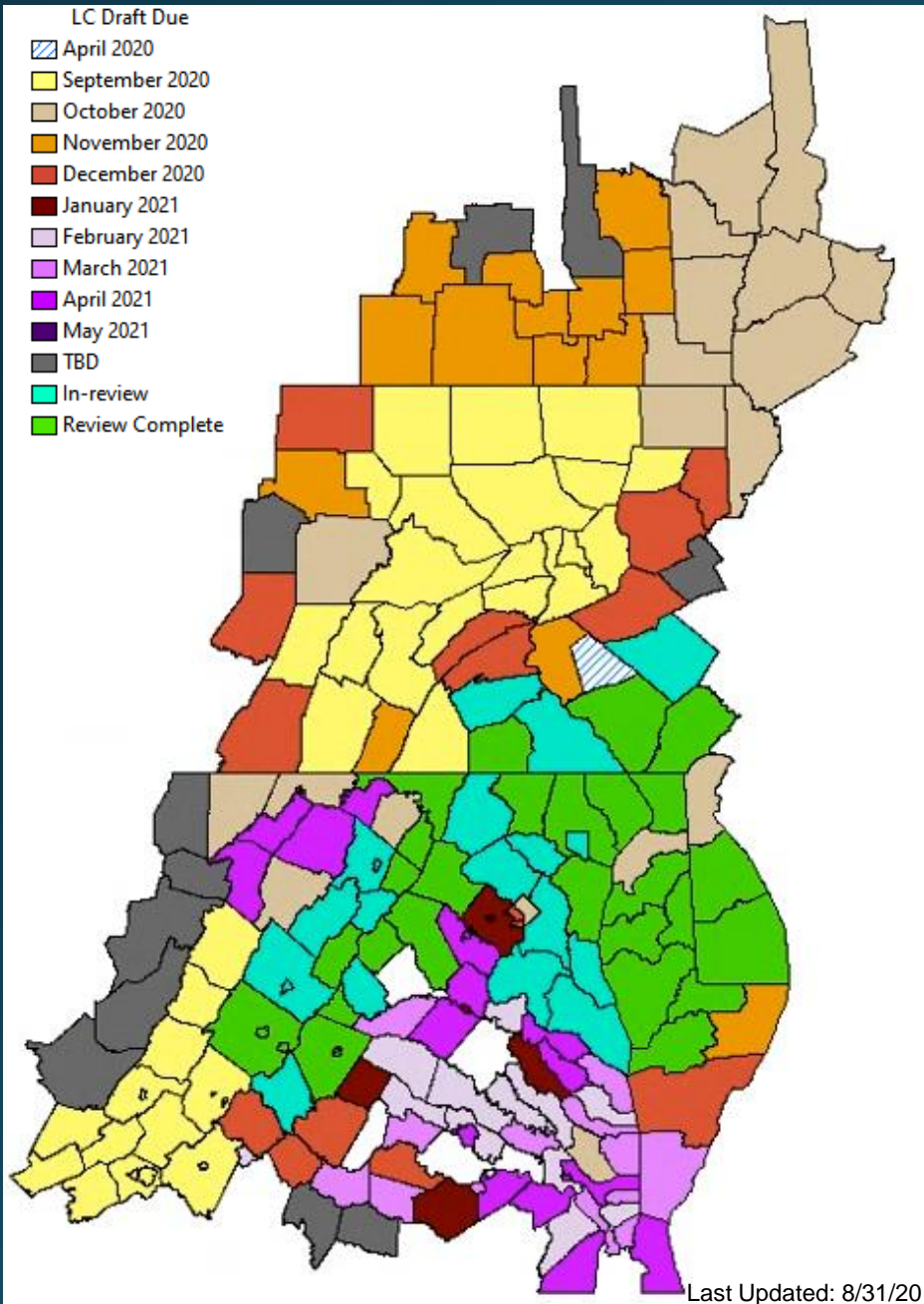
Join Zoom Meeting

<https://zoom.us/j/92570587589>

Meeting ID: 925 7058 7589

Passcode: 921218

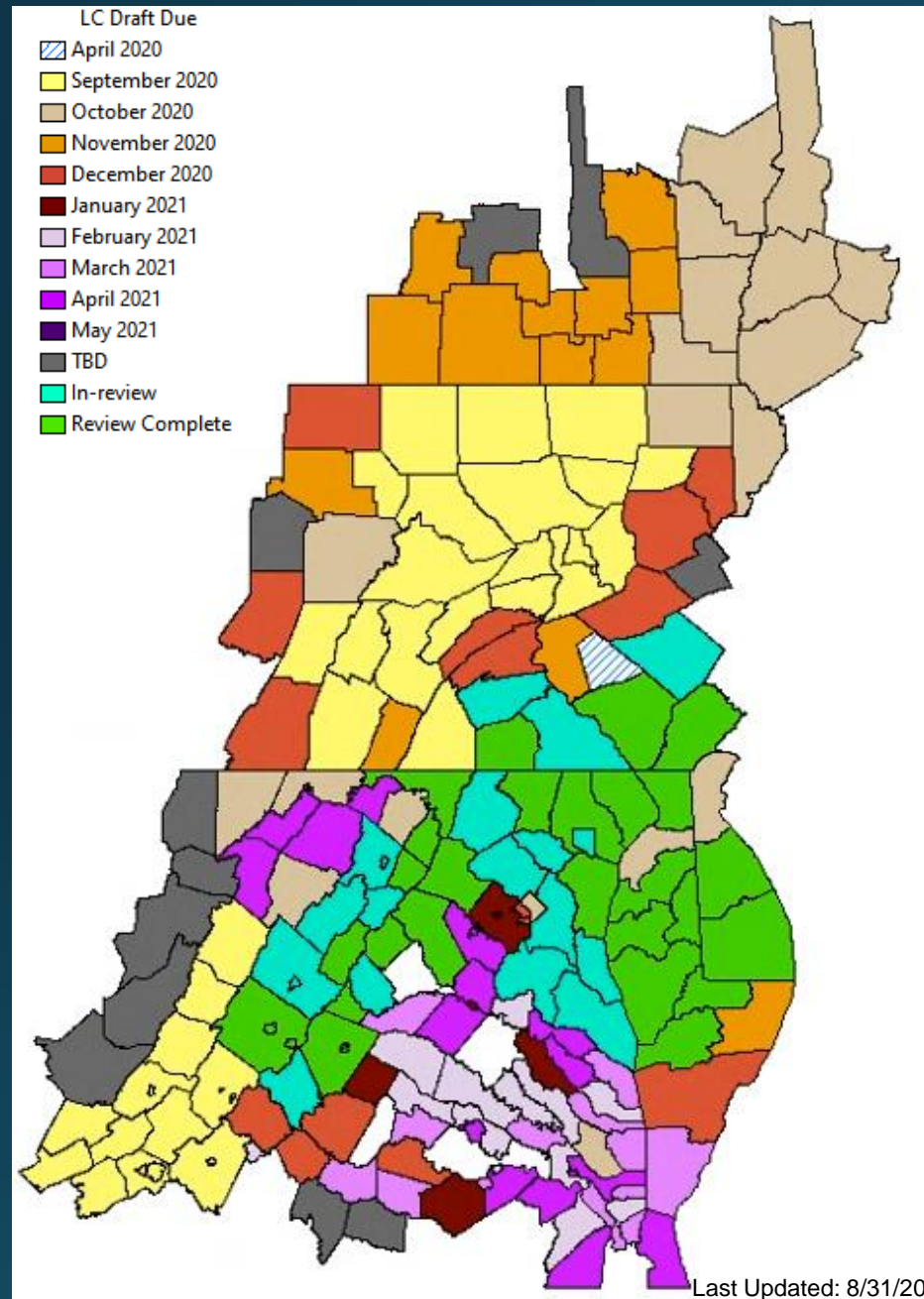
Land Cover Production Schedule



- Review temporarily postponed due to COVID-19:
 - Lebanon County, PA
- Review extended due to COVID-19:
 - Carroll County, MD
 - York County, PA
 - Cumberland County, PA
 - Berks County, PA
- Review-time passed (feedback from county in green):
 - Baltimore County, MD
 - Cecil County, MD
 - Queen Anne's, MD
 - Talbot, MD
 - Somerset, MD
 - Wicomico, MD
 - Dorchester, MD
 - Harford, MD
 - Caroline, MD
 - Washington, MD
 - Adams County, PA
 - Chester County, PA
 - Lancaster, PA
 - Kent, DE
 - Sussex, DE
 - Page, VA
 - Waynesboro, VA
 - Loudon, VA
 - Fauquier, VA
 - Anne Arundel, MD
 - Charlottesville, VA (VA DEQ feedback)
 - Staunton, VA
 - Greene, VA
 - Frederick, VA (VA DEQ feedback)
 - Albemarle, VA
 - Clarke, VA
 - Nelson, VA (VA DEQ feedback)
 - Warren, VA (VA DEQ feedback)
 - Augusta, VA
 - Winchester, VA (VA DEQ feedback)
 - Rappahannock, VA
 - Madison, VA (VA DEQ feedback)
 - Jefferson, WV

Only denoted if VA DEQ provided comments on those localities we have not heard back from explicitly

Land Cover Production Schedule



Localities Currently In-Review:

- Calvert, MD
- Charles, MD
- Frederick, MD
- Howard, MD
- St. Mary's, MD
- Montgomery, MD
- Prince George's, MD
- Baltimore City, MD
- Rockingham, VA
- Harrisonburg, VA
- Shenandoah, VA (VA DEQ feedback)

Upcoming Localities to Review:

- Bedford, PA
- Blair, PA
- Bradford, PA
- Cambria, PA
- Cameron, PA
- Centre, PA
- Clinton, PA
- Columbia, PA
- Huntingdon, PA
- Lycoming, PA
- Mifflin, PA
- Montour, PA
- Northumberland, PA
- Potter, PA
- Sullivan, PA
- Snyder, PA
- Tioga, PA
- Union, PA
- Wyoming, PA

Virginia

- CIC reclassified 2013/14 VA LC into 9 of our classes (water, tree canopy, shrubland, low vegetation, barren, impervious roads, impervious, tree canopy over impervious, tree canopy over impervious roads). Patched our own tree canopy layer, removed wetlands.
- 2017/18: UVM is using our reclassified VA LC, and using lidar and building planimetrics to capture structures (therefore also creating TC over structures). CIC, CBP, and UVM are working on an updated wetlands class in VA.
 - Cropland and pasture will be captured in our Land Use dataset

2014 VA Land Cover

-Hydro

-Impervious (extracted)

-Impervious (Local datasets)

-Barren

-Forest

-Tree

-Scrub/Shrub

-Harvested/Disturbed

-Turf Grass

-Pasture

-Cropland

-Woody Wetlands

-Emergent Wetlands

2018 VA Land Cover

-Water

-Impervious Surfaces

-Impervious Roads

-Structures

-Barren

-Tree Canopy

-Tree Canopy Over Structures

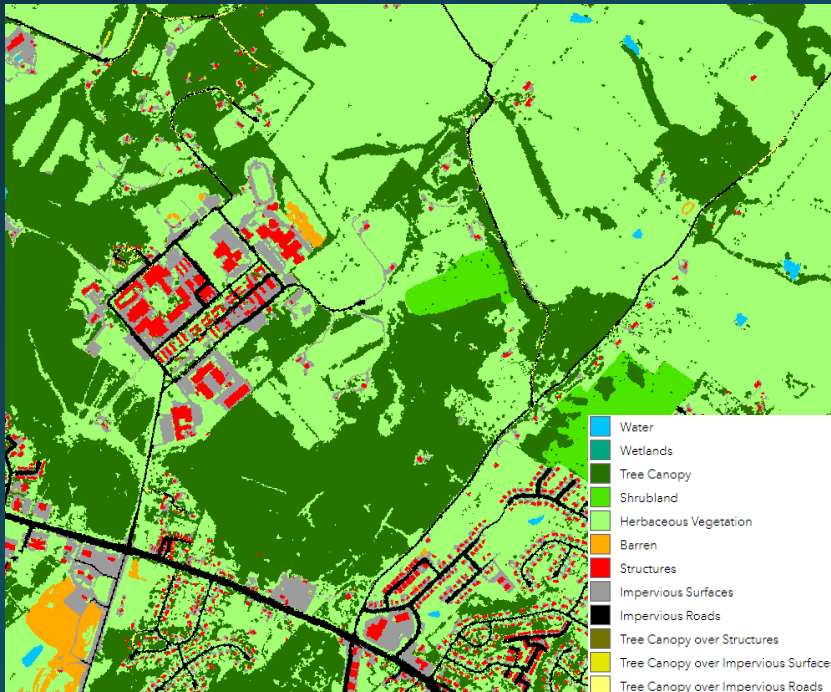
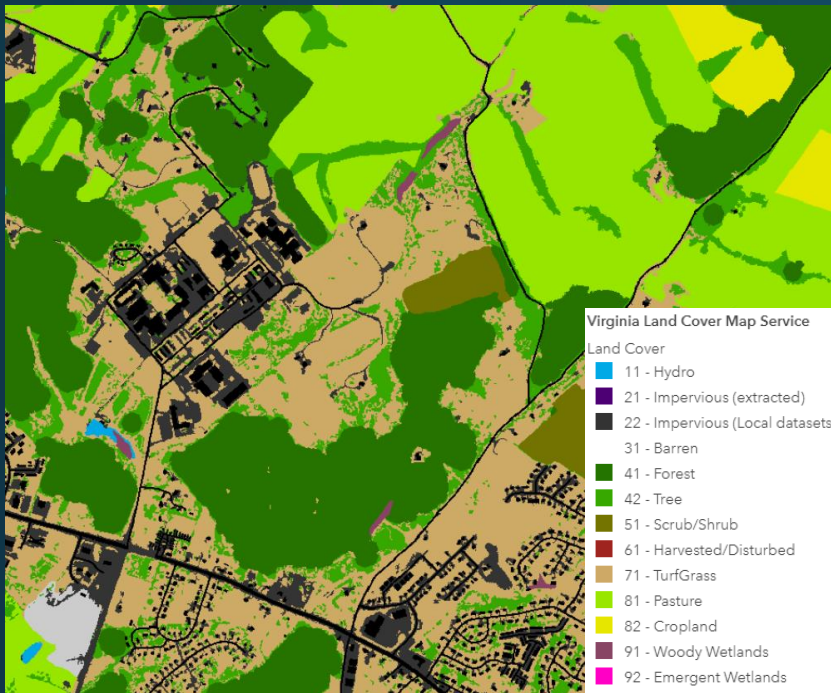
-Tree Canopy Over Impervious Surfaces

-Tree Canopy Over Impervious Roads

-Shrubland

-Herbaceous Vegetation

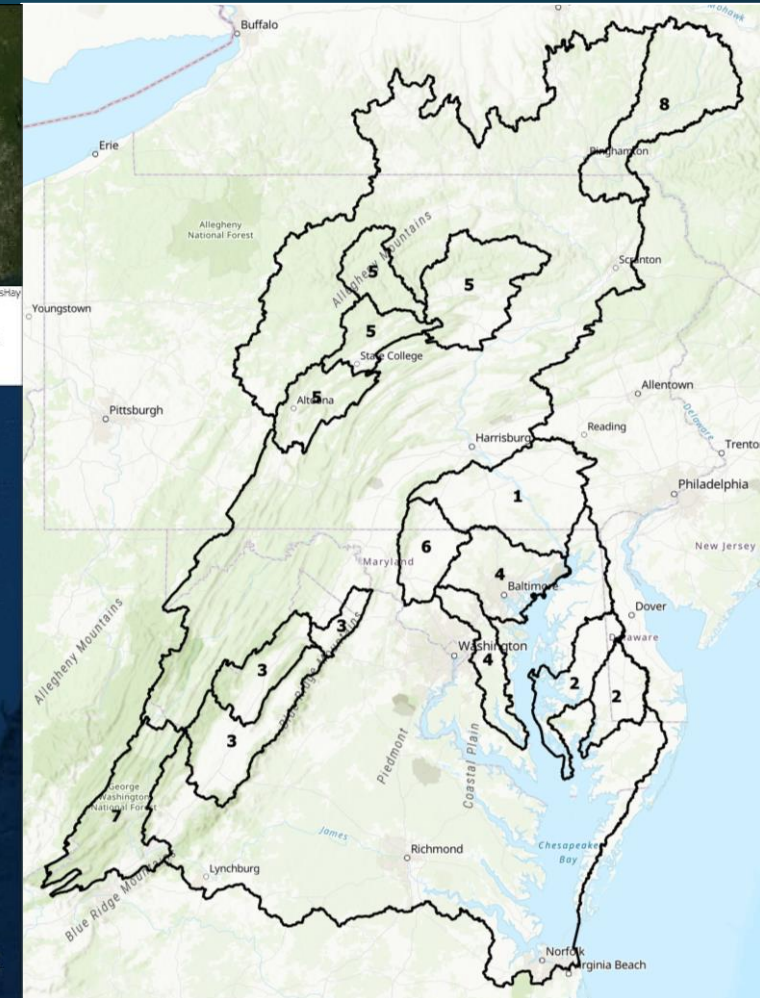
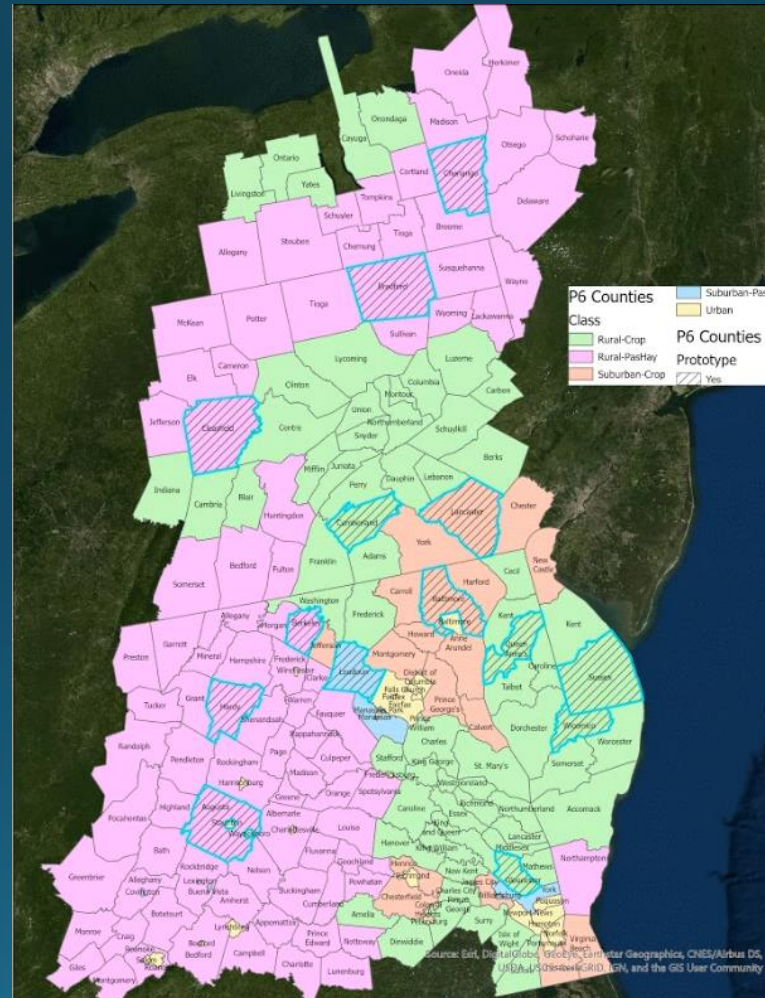
-Wetlands



Schedule Shift

The following counties are moved up in the production schedule to Fall 2020 to fulfill the completion of the 14 prototype counties for the Land Use:

- Hardy, WV
- Berkeley, WV
- Gloucester, VA
- Clearfield, PA



Questions?

rsoobitsky@chesapeakeconservancy.org