

Marsh Loss in the Maryland Coastal Bays And Restoration Efforts to Reverse the Loss

**Rich Mason- US Fish and Wildlife Service
Chesapeake Bay Program, Wetland Workgroup
August 17, 2021**



Maryland Coastal Bays

- 71,000 acres of water
- 248 miles of shoreline
- 35,000 ac of wetlands (tidal and nontidal)
- 360 species of birds
- 108 species of rare, threatened, or endangered wildlife species.



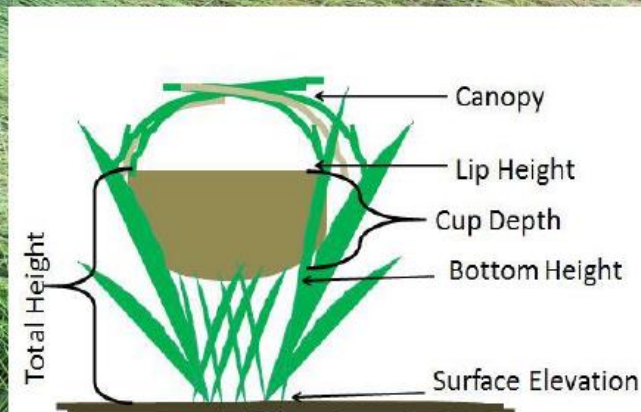
Tidal salt marshes cover about 17,000 acres in the Coastal Bays.

- Provide a nursery for fish and shellfish
- Provide habitat for many species of marsh birds and other wildlife
- Store large amounts of blue carbon
- Provide a buffer against coastal storms
- Provide recreation and are a defining feature of our coastal areas.

Obligate salt marsh bird

Nests in *Spartina patens*,
Juncus, etc, which are located
in areas of marsh that flood
the least frequently (should
be once/month)

Salt Marsh Sparrow



Search tools

- Create PDF
- Combine Files
- Edit PDF
- Fill & Sign
- Export PDF
- Organize Pages
- Send for Comme...
- Comment
- Scan & OCR
- Protect

Get e-signatures fast

Send PDFs for signing. Recipients
sign online without Acrobat.

Request Signatures



Search tools



Create PDF



Combine Files



Edit PDF



Fill & Sign



Export PDF



Organize Pages



Send for Comments



Comment



Scan & OCR

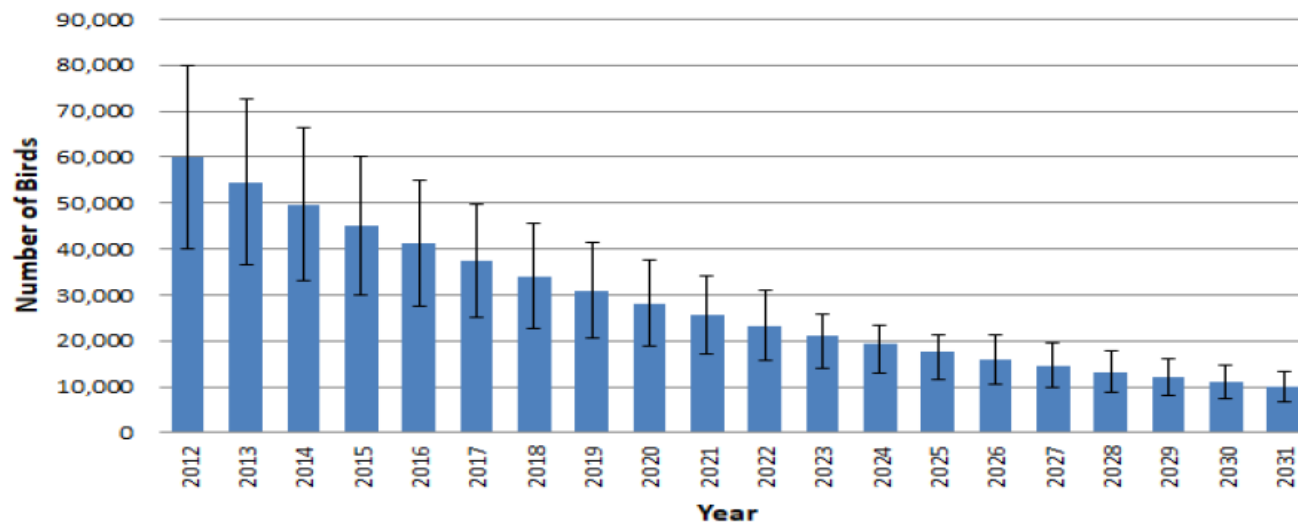


Protect

Get e-signatures fastSend PDFs for signing. Recipients
sign online without Acrobat.**Request Signatures**

Population Trend

Saltmarsh Sparrow Estimated Population Trajectory Under -9% Annual Decline



Source: ACJV.org

Data from Wiest et. al. 2018
and Correll et al. 2016

Documented 9% annual rate of decline range-wide (1998-2012)

Projecting that decline through 2018, we would estimate 84% population decline since 1998

Extinction predicted as early as 2032 and as late as 2064 based on population viability analyses



Search tools



Create PDF



Combine Files



Edit PDF



Fill & Sign



Export PDF



Organize Pages



Send for Comm...



Comment



Scan & OCR



Protect

Get e-signatures fastSend PDFs for signing. Recipients
sign online without Acrobat.**Request Signatures**

Causes of Decline

- Low reproductive success
- 57% of nests failed to produce a single fledgling from 2011-2015
- Reproductive failure is caused by:
 - Flooding of nests
 - Predation of nests (in the south)
 - Tidal restrictions associated with negative population growth rates



Jenna Mielcarek

Black Rail

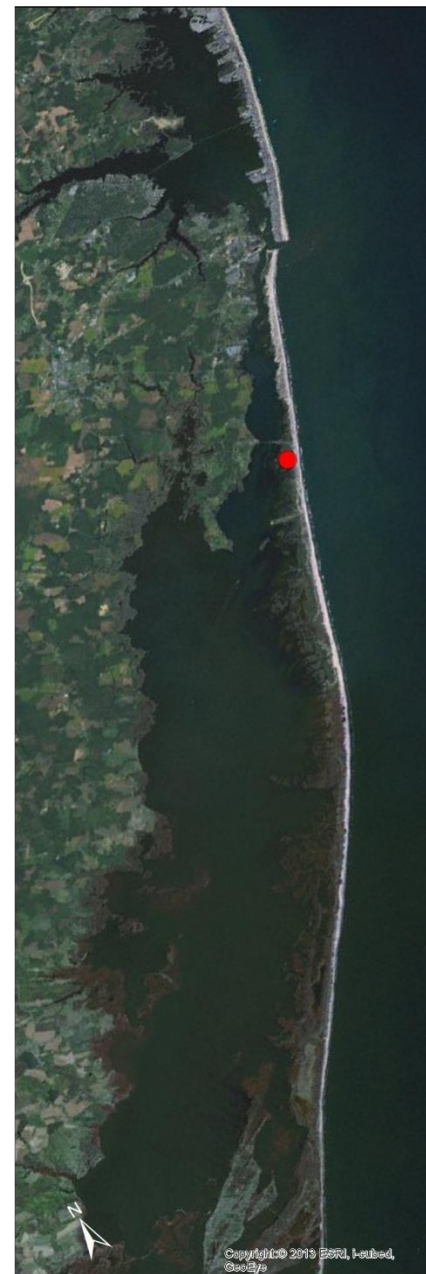
MD DNR Marsh Bird
Surveys- Black Rail
detections. Brinker et al



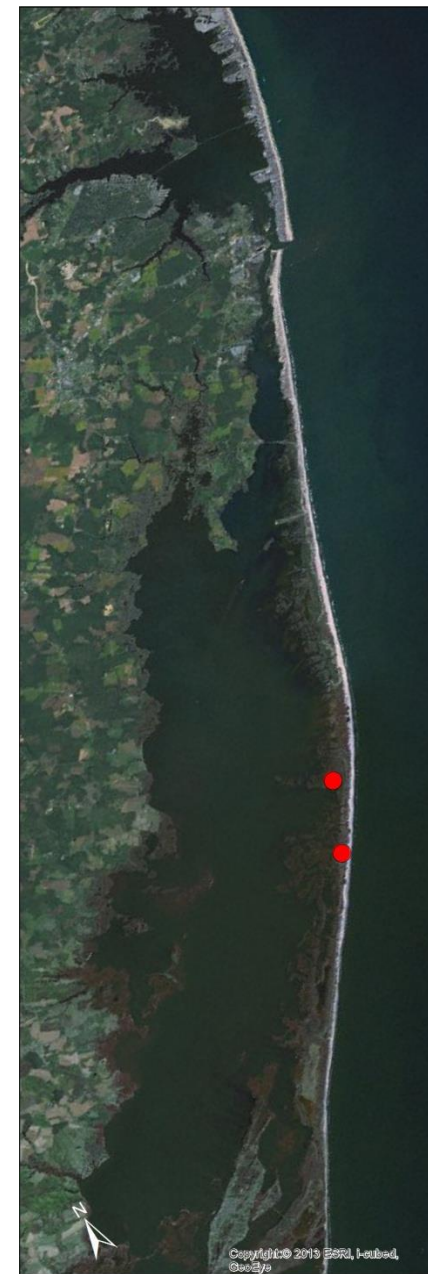
1990



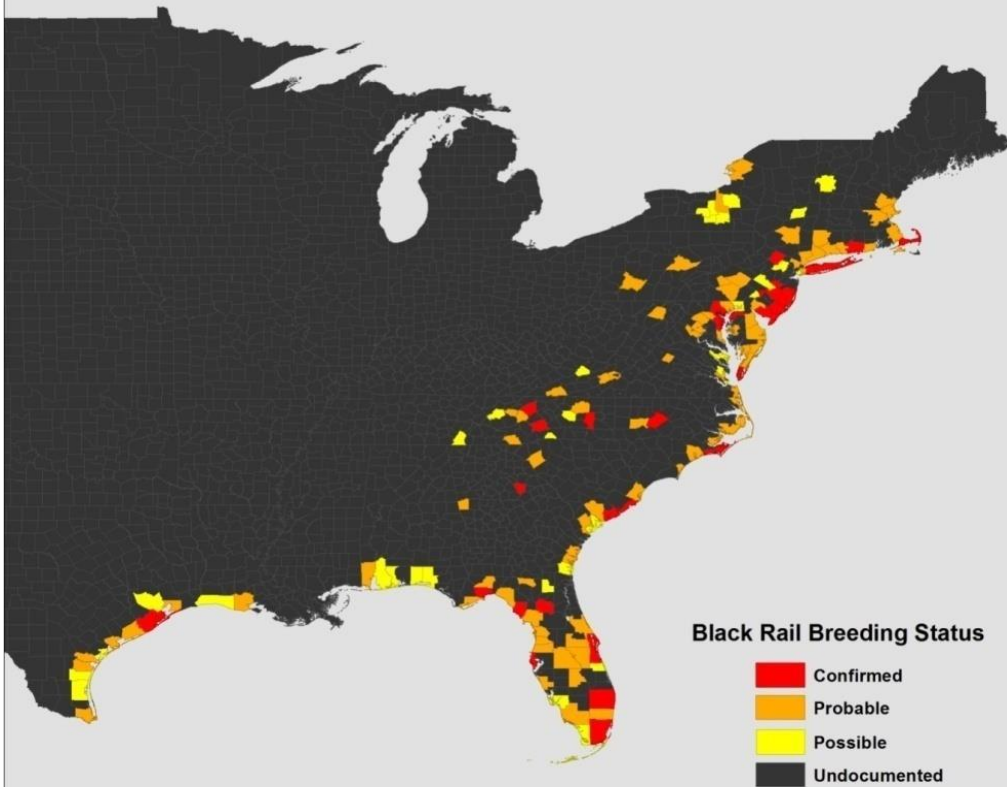
2007



2014

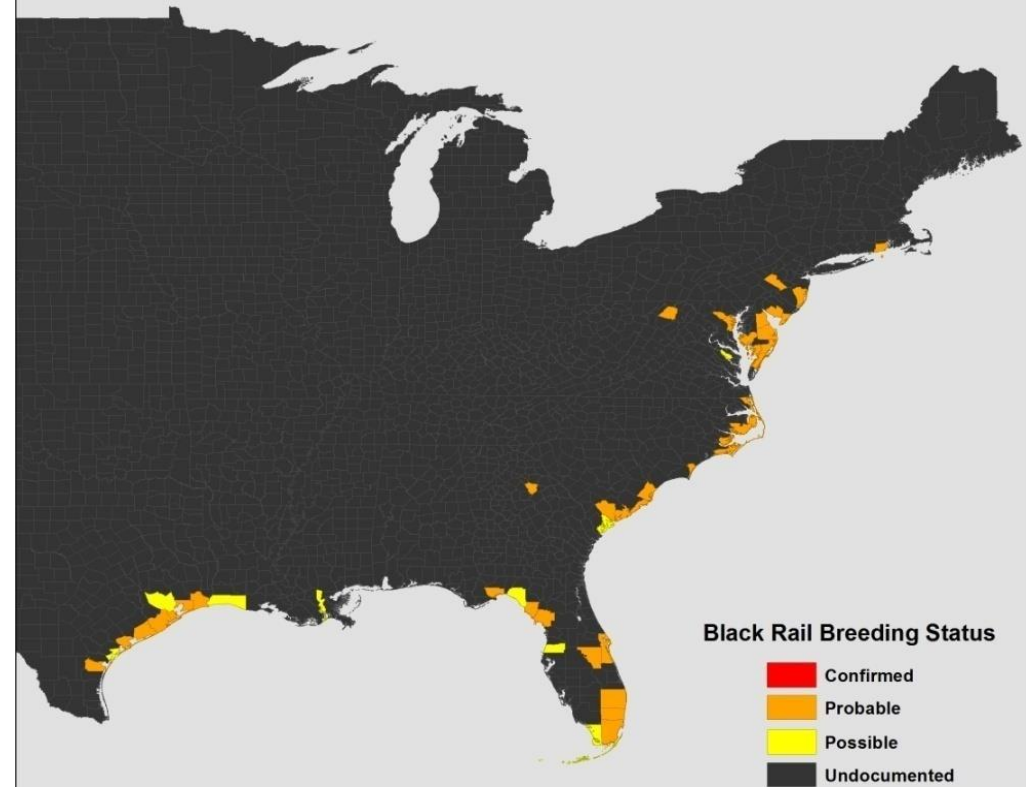


Eastern Black Rail Breeding Distribution
(Counties of Atlantic and Gulf Coast States, 1836 to 2016)



174 Counties

Eastern Black Rail Breeding Distribution
(Counties of Atlantic and Gulf Coast States after 2010)




The Center for Conservation Biology


49 Counties

Coastal Marsh in Virginia

Natural Drainage Patterns

Legend

 NATIONAL WILDLIFE REFUGE

 Natural Marsh drainage

Google Earth

Image USDA Farm Service Agency

Image NOAA



1000 ft



EA Vaughn Wildlife Management Area- Scarborough Marsh





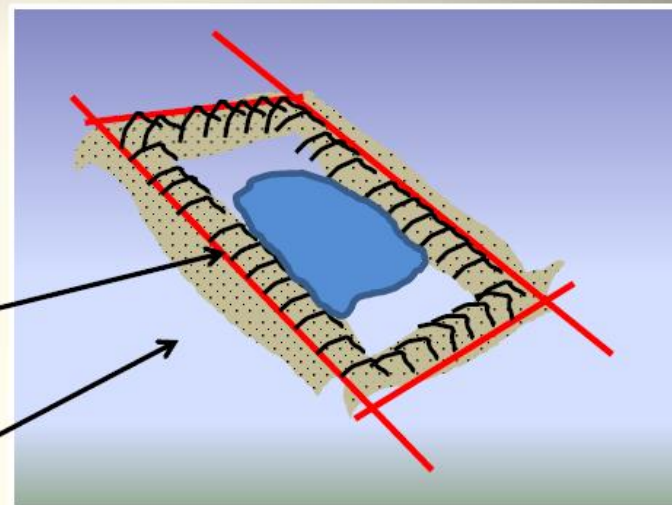
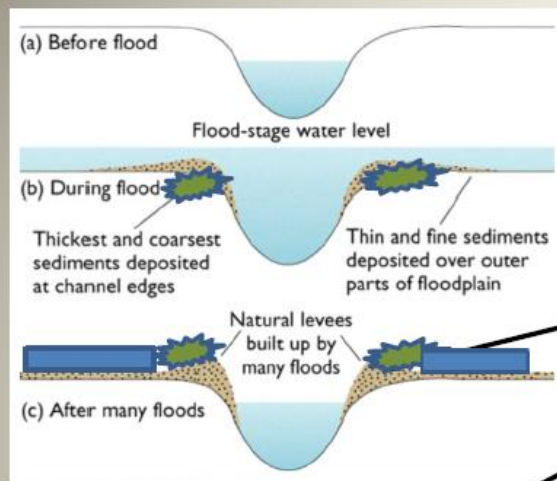
152 / 209



77.4%



Ditched Marsh Panne Formation



Problem – Marshes have mosquito ditches that are linear and often grid ditched, no meanders; SLR and sediment issues allow pannes Marsh turns into a 'waffle'

Search tools

Create PDF

Combine Files

Edit PDF

Fill & Sign

Export PDF

Organize Pages

Send for Comments

Comment

Scan & OCR

Protect

Get e-signatures fast

Send PDFs for signing. Recipients sign online without Acrobat.

[Request Signatures](#)

Marsh Adaptation Strategies

In Marsh

- Drainage enhancement of expanding impounded water areas through excavation of runnels/shallow channels
- Sediment placement/marsh elevation enhancement

Marsh Migration area

- Remove of physical barriers to marsh migration i.e. walls/dams/roads
- Land conservation



- Create PDF
- Combine Files
- Edit PDF
- Fill & Sign
- Export PDF
- Organize Pages
- Send for Comme...
- Comment
- Scan & OCR
- Protect

Get e-signatures fast

Send PDFs for signing. Recipients sign online without Acrobat.

[Request Signatures](#)



68 / 209



77.4%



Runnel range of profiles

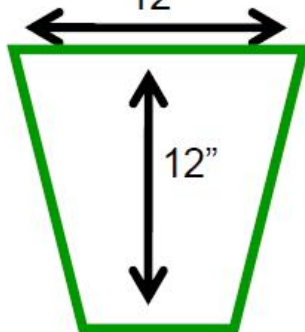
small runnels

6-8"



large runnels

12"



Ditch blockage opened by hand

Create PDF

Combine Files

Edit PDF

Fill & Sign

Export PDF

Organize Pages

Send for Comme...

Comment

Scan & OCR

Protect

Get e-signatures fast

Send PDFs for signing. Recipients
sign online without Acrobat.

Request Signatures



28 / 44



77.4%



Potters Pond, South Kingstown

Conduct project in phases; shallow drainage can prevent loss of sediment and reduce loss of elevation



Runnel excavation by hand in summer of 2018



Creek excavation in fall of 2018 with low ground pressure excavator



Slide by Wenley Ferguson



Create PDF



Combine Files



Edit PDF



Fill & Sign



Export PDF



Organize Pages



Send for Comm...



Comment



Scan & OCR



Protect

Get e-signatures fast

Send PDFs for signing. Recipients sign online without Acrobat.

[Request Signatures](#)

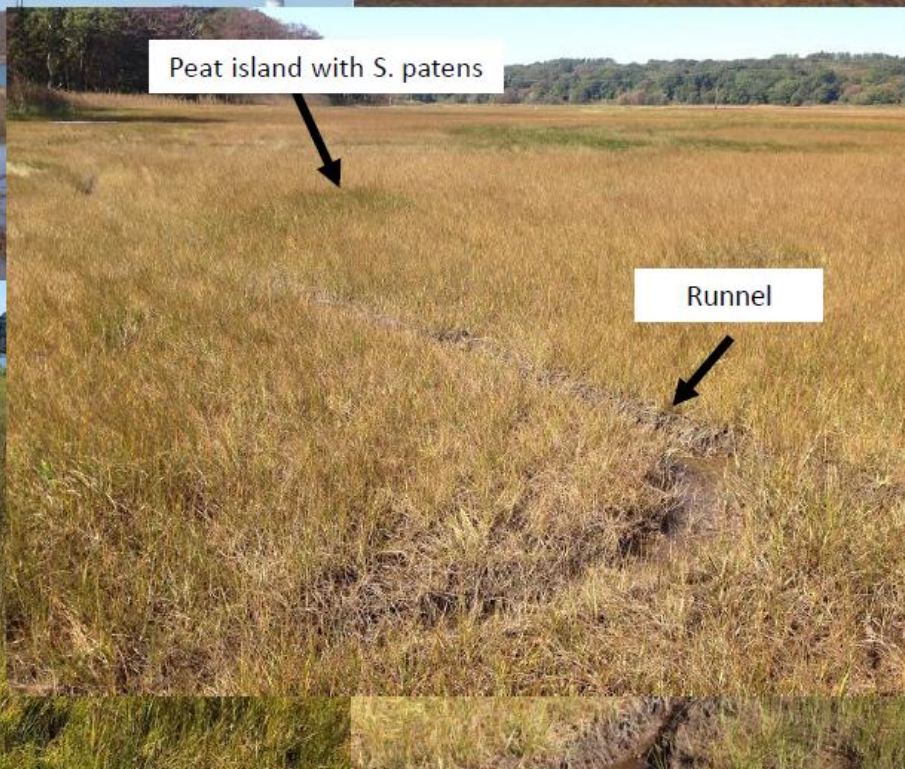
Narrow River runnels: *Use excavated peat to create microtopography*



Spring 2015



Fall 2019



Peat island with *S. patens*

Runnel



Search tools

- Create PDF
- Combine Files
- Edit PDF
- Fill & Sign
- Export PDF
- Organize Pages
- Send for Comme...
- Comment
- Scan & OCR
- Protect

Get e-signatures fast

Send PDFs for signing. Recipients sign online without Acrobat.

Request Signatures

Runnels in upper marsh had greater recolonization than lower elevation areas



Search tools

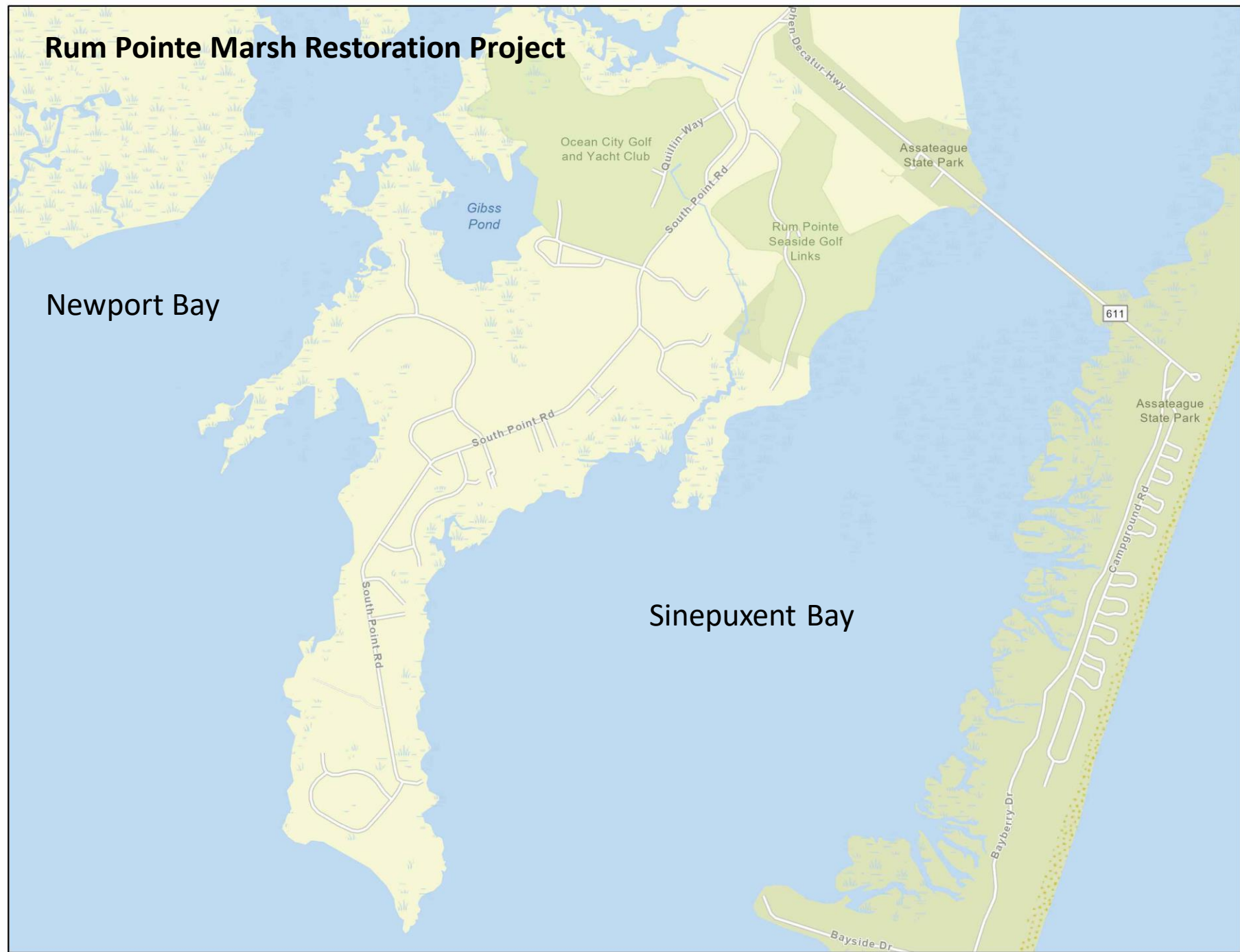
- Create PDF
- Combine Files
- Edit PDF
- Fill & Sign
- Export PDF
- Organize Pages
- Send for Comme...
- Comment
- Scan & OCR
- Protect

Get e-signatures fast

Send PDFs for signing. Recipients sign online without Acrobat.

Request Signatures

Rum Point Marsh Restoration Project



Rum Pointe Marsh Restoration Project

11/20/2020

MAX_0005.DNG







Deal Island WMA

Grid Ditching

Legend

Deal Island State Wildlife Management Area

Google Earth

Image: USDA Farm Service Agency



1000 ft

**Thank You
Questions?**

