



Census Products

Amanda Dawson
Census Section

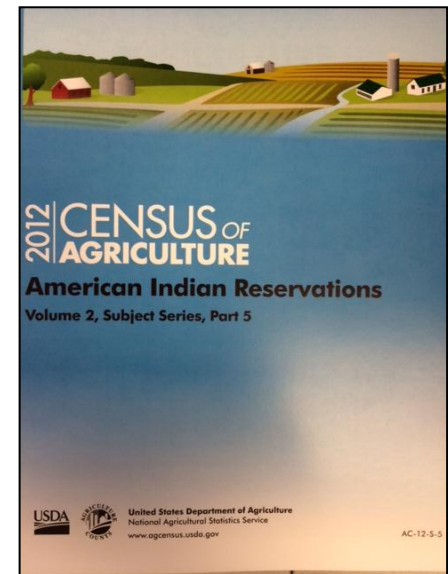
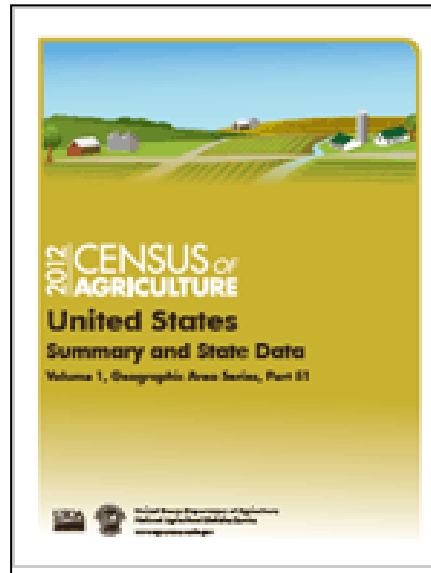


United States Department of Agriculture
National Agricultural Statistics Service

2012 | CENSUS OF
AGRICULTURE
YOUR VOICE. YOUR FUTURE. YOUR RESPONSIBILITY.

Census Products

- Census Products
- Released Products
- Future Products
- Census Process



Planning → Release



Census Products

Examples

Volume 1

-Geographic Area Series

-U.S. Summary & State Report
-State & County Reports

Volume 2

-Subject Series

-American Indian Reservations
-Watersheds

Volume 3

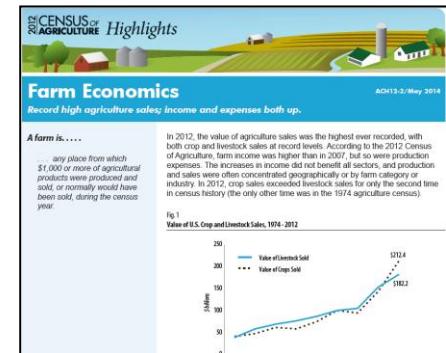
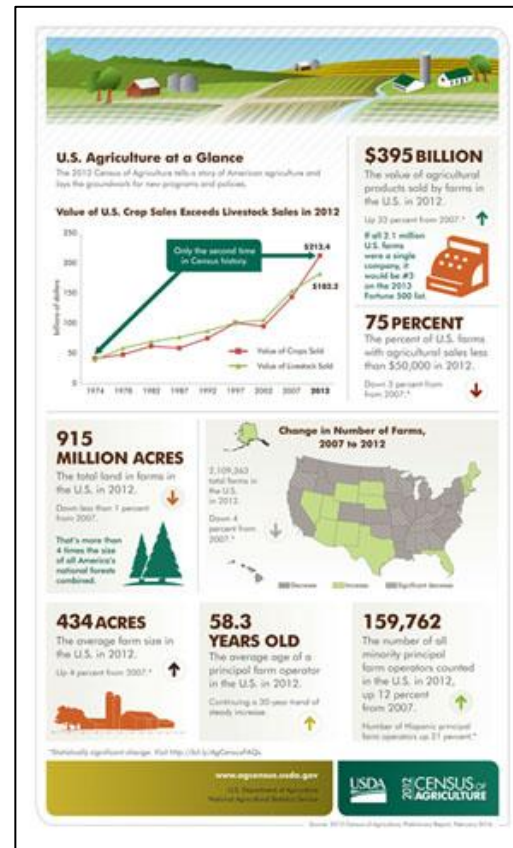
-Special Studies

-Farm and Ranch Irrigation Survey
-Census of Aquaculture



Additional Online Census Products

- Quick Stats
- Desktop Data Query Tool
- Online Highlights
- Ag Census Web Map



Quick Stats

- [www.nass.usda.gov/Quick Stats](http://www.nass.usda.gov/Quick_Stats)
- Online statistics database on the NASS Web site.
- Data available at the National, State, and county-level.





Quick Stats

[Home](#)[Recent Statistics](#)

Keyword Search

[Hints](#)**Select Commodity** (one or more) [?](#)**Program:**

CENSUS
SURVEY

Sector:

ANIMALS & PRODUCTS
CROPS
DEMOGRAPHICS
ECONOMICS
ENVIRONMENTAL

Group:

FIELD CROPS
FRUIT & TREE NUTS
HORTICULTURE
INCOME
LIVESTOCK
OPERATORS
POULTRY
SPECIALTY
VEGETABLES

Commodity:

OPERATORS
OPERATORS, PRINCIPAL
OPERATORS, SECOND
OPERATORS, THIRD

Category:

AGE, AVG
AREA OPERATED
OPERATIONS
OPERATORS
PERSONS IN HOUSEHOLD
RECEIPTS
YEARS ON ANY OPERATION
YEARS ON PRESENT OPERATION

Data Item:

OPERATORS, PRINCIPAL - AGE, AVG, MEASURED IN YEARS
OPERATORS, PRINCIPAL, AGE 25 TO 34, PRIMARY OCCUPATION, (EXCL FARMING) - AGE, AVG, MEASURED IN YEARS
OPERATORS, PRINCIPAL, AGE 25 TO 34, PRIMARY OCCUPATION, FARMING - AGE, AVG, MEASURED IN YEARS
OPERATORS, PRINCIPAL, AGE 35 TO 44, PRIMARY OCCUPATION, (EXCL FARMING) - AGE, AVG, MEASURED IN YEARS
OPERATORS, PRINCIPAL, AGE 35 TO 44, PRIMARY OCCUPATION, FARMING - AGE, AVG, MEASURED IN YEARS
OPERATORS, PRINCIPAL, AGE 45 TO 54, PRIMARY OCCUPATION, (EXCL FARMING) - AGE, AVG, MEASURED IN YEARS
OPERATORS, PRINCIPAL, AGE 45 TO 54, PRIMARY OCCUPATION, FARMING - AGE, AVG, MEASURED IN YEARS
OPERATORS, PRINCIPAL, AGE 55 TO 64, PRIMARY OCCUPATION, (EXCL FARMING) - AGE, AVG, MEASURED IN YEARS
OPERATORS, PRINCIPAL, AGE 55 TO 64, PRIMARY OCCUPATION, FARMING - AGE, AVG, MEASURED IN YEARS

Domain:

AREA OPERATED
ECONOMICS
FARM SALES
NAICS CODE
OPERATIONS
ORGANIC
ORGANIC
TENURE
TOTAL

Select Location (one or more) [?](#)**Geographic Level:**

COUNTY
NATIONAL
STATE

State:

US TOTAL

Select Time (one or more) [?](#)

Quick Stats

[Home](#)
[Recent Statistics](#)
[Feedback](#)
[Help](#)

Navigation History: [Data](#)

[Save](#) :: [Spreadsheet](#) :: [Printable](#) :: [Map](#) :: (1 rows)

Program	Year	Period	Geo Level	State	State ANSI	Commodity	Data Item	Domain	Domain Category	Value
CENSUS	2007	END OF DEC	NATIONAL	US TOTAL	...	OPERATORS, PRINCIPAL	OPERATORS, PRINCIPAL - AGE, AVG, MEASURED IN YEARS	TOTAL	NOT SPECIFIED	57.1

Table 1. Historical Highlights: 2007 and Earlier Census Years
 [For meaning of abbreviations and symbols, see introductory text]

All farms	2007	2002	1997
Farms number	2,204,792	2,128,982	2,215,876
Land in farms acres	922,095,840	938,279,056	954,752,502
Average size of farm acres	418	441	431
Estimated market value of land and buildings ¹ :			
Average per farm dollars	791,138	537,833	416,007
Average per acre dollars	1,892	1,213	967
Estimated market value of all machinery and equipment \$1,000	194,783,471	136,624,880	119,302,923
Average per farm dollars	88,357	66,570	53,861
Farms by size:			
1 to 9 acres	232,849	179,346	205,390
10 to 49 acres	620,283	563,772	530,902
50 to 179 acres	680,530	658,705	694,489
180 to 499 acres	368,368	388,617	428,215
500 to 999 acres	149,713	161,552	179,447
1,000 to 1,999 acres	92,656	99,020	103,007
2,000 acres or more	80,393	77,970	74,426
Total cropland farms	1,685,339	1,751,450	1,857,239
Harvested cropland acres	406,424,909	434,164,946	445,324,765
Irrigated land farms	1,328,004	1,362,808	1,545,681
Irrigated land acres	309,607,601	302,697,252	318,937,401
Irrigated land farms	301,028	299,583	308,918
Irrigated land acres	56,599,305	55,311,236	56,289,172
Market value of agricultural products sold (see text) \$1,000	297,220,491	200,646,355	201,379,812
Average per farm dollars	134,807	94,245	90,880
Crops, including nursery and greenhouse crops \$1,000	143,857,928	95,151,954	100,668,794
Livestock, poultry, and their products \$1,000	153,562,563	105,494,401	100,711,018
Farms by value of sales ² :			
Less than \$2,500	900,327	826,558	693,026
\$2,500 to \$4,999	200,302	213,326	265,967
\$5,000 to \$9,999	218,531	223,168	267,575
\$10,000 to \$24,999	248,285	256,157	293,639
\$25,000 to \$49,999	154,732	157,906	179,629
\$50,000 to \$99,999	125,456	140,479	163,510
\$100,000 to \$499,999	240,873	240,746	282,422
\$500,000 or more	116,286	70,642	70,408
Farms by type of organization:			
Family or individual	1,906,335	1,909,598	1,922,590
Partnership	174,247	129,593	185,607
Corporation	96,074	73,752	90,432
Other-cooperative, estate or trust, institutional, etc	28,136	16,039	17,247
Principal operator by days of work off farm ³ :			
None	777,747	982,200	832,585
Any	1,427,045	1,166,782	1,254,537
200 days or more	876,301	832,348	870,945
Principal operator by primary occupation:			
Farming	993,881	1,224,46	1,044,388
Other	1,210,911	99,98	1,171,488
Average age of principal operator years	57.1		

Spreadsheet

Microsoft Excel window showing a spreadsheet titled "D0E087F6-8626-3B7E-8967-3E5A6C675F35.csv [Read-Only]". The ribbon includes Home, Insert, Page Layout, Formulas, Data, Review, View, and Acrobat. The spreadsheet data is as follows:

	A	B	C	D	E	F	G	H	I	J	K	L	M	N	O	P	Q	R	S
1	Program	Year	Period	Week End	Geo Level	State	State ANS	Ag District	Ag District	County	County AN	Zip Code	Region	Watershe	Commodi	Data Item	Domain	Domain C	Value
2	CENSUS	2007	END OF DEC		STATE	DELAWARE	10								OPERATO	OPERATO	TOTAL	NOT SPEC	55.4
3																			
4																			
5																			
6																			

Printable

USDA United States Department of Agriculture
National Agricultural Statistics Service

2007 CENSUS OF AGRICULTURE

Quick Stats

Home Recent Statistics Feedback Help

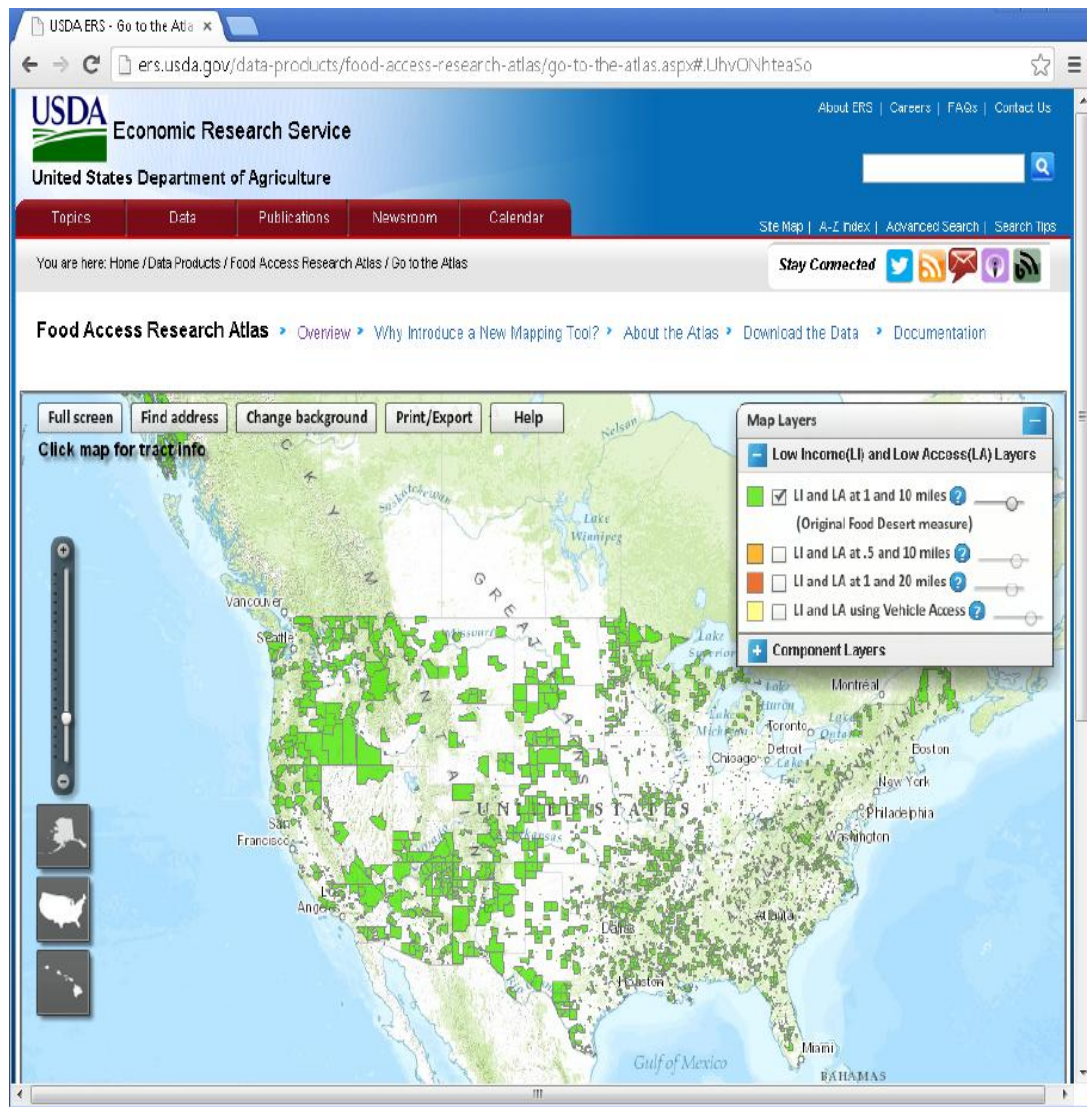
Program	Year	Period	Week Ending	Geo Level	State	State ANSI	Ag District	Ag District Code	County	County ANSI	Zip Code	Region	Watershed	Commodity	Data Item	Domain	Domain Category	Value
CENSUS	2007	END OF DEC		STATE	DELAWARE	10								OPERATORS, PRINCIPAL	OPERATORS, PRINCIPAL - AGE, AVG, MEASURED IN YEARS	TOTAL	NOT SPECIFIED	55.4



Ag Census Web Map

- ERS and NASS agreed to co-develop a 2012 Agricultural Census (Ag Census) Atlas.
- NASS has historically published an Atlas in paper and electronic .PDF formats illustrating some of the key variables that depict US agriculture from each Ag Census.
- Interest from data users wanting more maps.





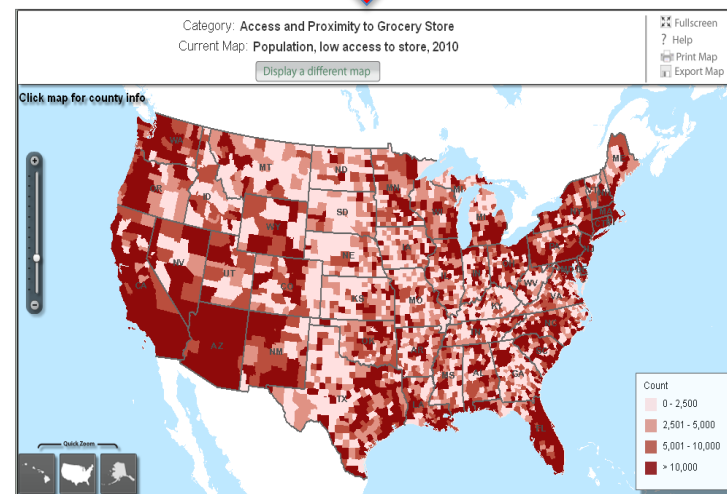
<http://www.ers.usda.gov/data-products/food-access-research-atlas/go-to-the-atlas.aspx>

USDA-ERS

• Food Access Research Atlas



• Food Environmental Atlas



<http://www.ers.usda.gov/data-products/food-environment-atlas/go-to-the-atlas.aspx>

2012 CENSUS OF AGRICULTURE
YOUR VOICE. YOUR FUTURE. YOUR RESPONSIBILITY.



Watersheds

- Subject Series: re-tabulating the data collected to produce the Volume 1 Geographic Series.
- Selected Census statistics for the 6-digit Hydrologic Unit Code (watershed) boundaries.
- Data includes number and size of farms, land use, irrigation, fertilizer and chemical use, and selected crops and livestock.



2007 CENSUS OF AGRICULTURE

Watersheds

Volume 2 • Subject Series • Part 6

Issued May 2009

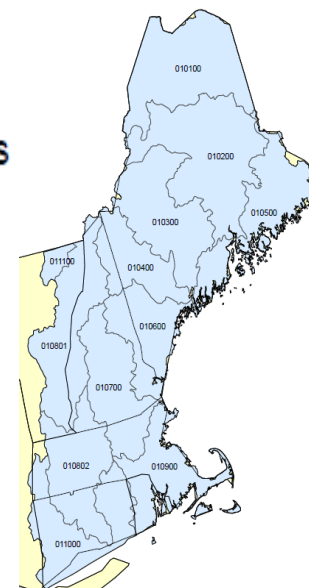
United States Department of Agriculture
Tom Vilsack, Secretary
National Agricultural Statistics Service
Cynthia Z.F. Clark, Administrator

New England Water Resource Region 01

Watershed Names

St. John	010100
Penobscot	010200
Kennebec	010300
Androscoggin	010400
Main Coastal	010500
Saco	010600
Merrimack	010700
Upper Connecticut	010801
Lower Connecticut	010802
Massachusetts-Rhode Island Coastal	010900
Connecticut	011000
St. Francois	011100

Hydrologic Unit Code

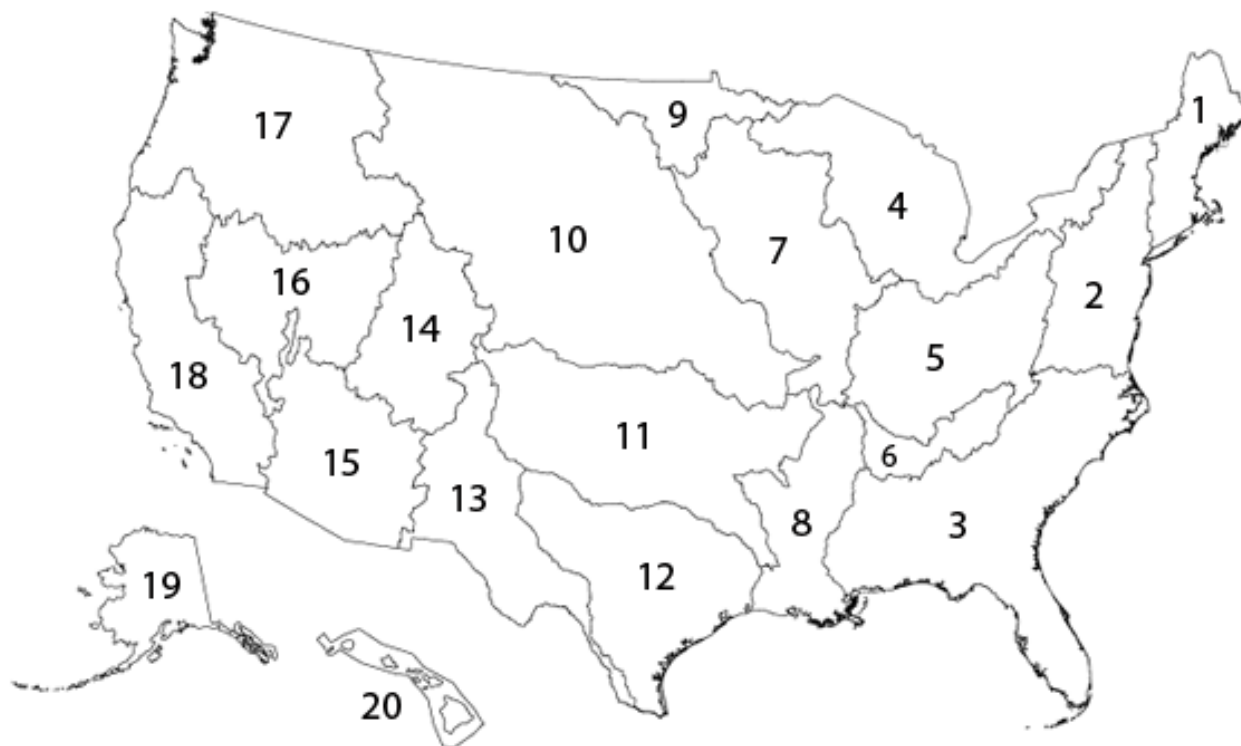


http://agcensusdev.nass.usda.gov/Publications/2007/Online_Highlights/Watersheds/wtrsheds.pdf



2007 Census by Watershed

Select the watershed region from the map or from the text below the map.



Full Watershed Report [PDF](#) | [TXT](#) | [CSV](#)



Table 1. Summary by Hydrologic Unit Code: 2007 and 2002

[For meaning of abbreviations and symbols, see introductory text]

Item	US		H01 New England		H010100	
	2007	2002	2007	2002	2007	2002
Farms farms	2,204,792	2,128,982	29,226	24,595	1,187	1,026
Land in farms acres	922,095,840	938,279,056	3,285,057	3,238,836	363,999	374,873
Land use:						
Total cropland farms	1,685,339	1,751,450	22,141	19,675	1,099	897
..... acres	406,424,909	434,164,946	1,204,682	1,263,082	195,246	189,596
Harvested cropland farms	1,328,004	1,362,608	18,826	16,669	521	578
..... acres	309,607,601	302,697,252	943,029	949,151	125,522	143,177
Cropland used only for pasture or grazing farms	404,753	716,202	4,940	7,706	137	185
..... acres	35,771,154	60,557,805	103,258	156,537	6,137	7,053
Cropland on which all crops failed or were abandoned farms	89,587	119,642	982	1,211	41	48
..... acres	7,405,898	17,069,564	11,530	19,267	838	1,571
Cropland idle or used for cover crops or soil improvement but not harvested and not pastured or grazed farms	360,225	380,300	4,189	4,051	795	532
..... acres	37,968,749	37,281,096	139,231	129,304	60,579	36,063
Cropland in cultivated summer fallow farms	67,960	72,335	656	525	61	39
..... acres	15,671,507	16,559,229	7,634	8,823	2,170	1,732
Total woodland farms	843,294	818,105	18,651	16,159	812	758
..... acres	75,098,603	75,878,213	1,525,868	1,563,748	135,508	148,883
Woodland pastured farms	370,297	379,795	4,515	3,708	101	108
..... acres	28,609,690	31,128,955	94,859	124,275	5,480	8,563
Woodland not pastured farms	596,123	568,956	16,676	14,495	763	706
..... acres	46,488,913	44,749,258	1,431,009	1,439,473	130,028	140,320
Permanent pasture and rangeland, other than cropland and woodland pastured farms	1,132,606	850,913	13,133	7,402	295	233
..... acres	408,832,116	395,278,829	234,737	152,918	9,315	8,742
Land in farmsteads, buildings, livestock facilities, ponds, roads, wasteland, etc. farms	1,126,272	1,165,564	18,829	16,604	693	661
..... acres	31,740,212	32,957,068	319,770	259,088	23,930	27,652
Irrigated land farms	301,028	299,583	4,333	4,373	58	61
..... acres	56,599,305	55,311,236	61,514	60,683	10,762	5,658
Harvested cropland farms	256,105	258,030	4,161	4,282	56	61
..... acres	51,537,104	50,334,022	(D)	60,120	10,739	5,658
Pastureland and other land farms	72,585	69,568	224	139	3	-
..... acres	5,062,201	4,977,214	(D)	563	23	-
Land used for organic production farms	20,437	7,254	1,567	464	38	18
..... acres	2,577,418	562,486	76,223	9,954	2,611	359

http://agcensusdev.nass.usda.gov/Publications/2007/Online_Highlights/Watersheds/ne01.pdf



2007 Census by Watershed

Select the watershed region from the map or from the text below the map.



Full Watershed Report [PDF](#) | [TXT](#) | [CSV](#)



[New England 01](#)
[Mid-Atlantic 02](#)
[South Atlantic-Gulf 03](#)
[Great Lakes 04](#)
[Ohio 05](#)

[Tennessee 06](#)
[Upper Mississippi 07](#)
[Lower Mississippi 08](#)
[Souris-Red-Rainy 09](#)
[Missouri 10](#)

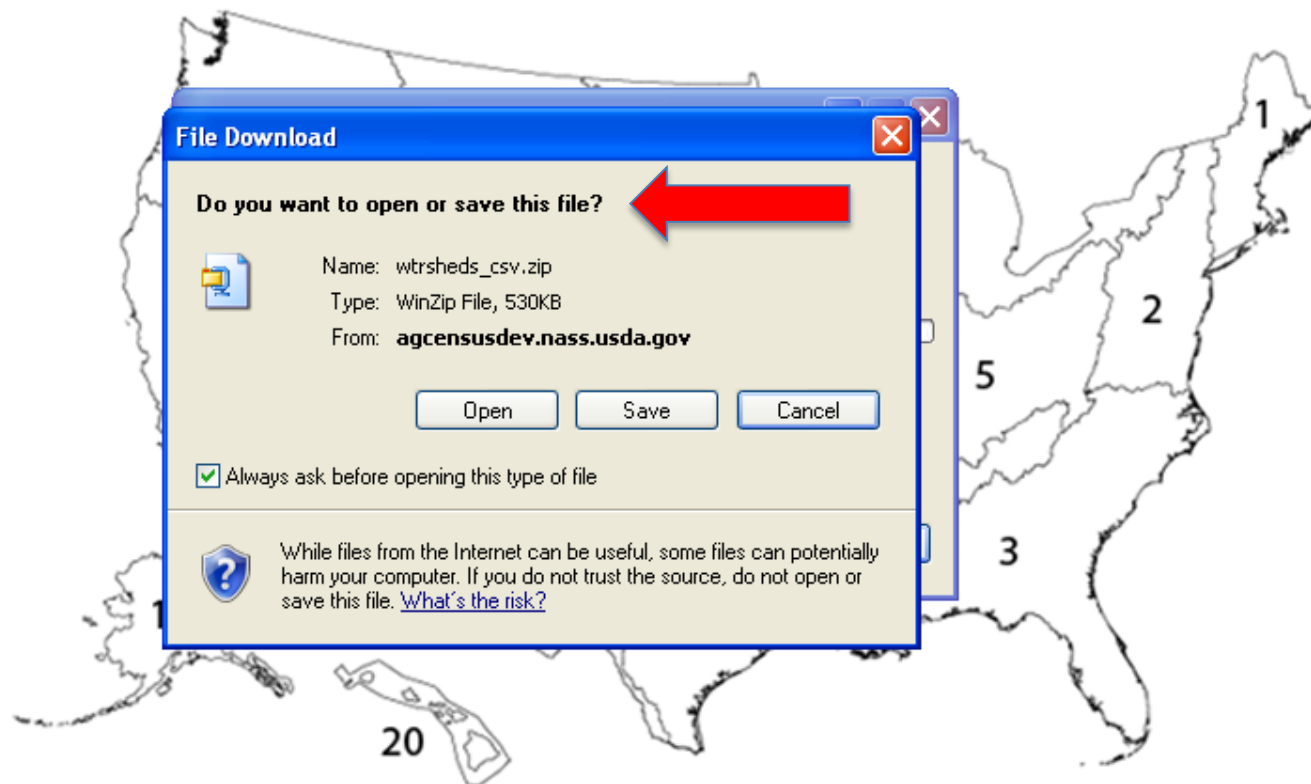
[Arkansas-White-Red 11](#)
[Texas-Gulf 12](#)
[Rio Grande 13](#)
[Upper Colorado 14](#)
[Lower Colorado 15](#)

[Great Basin 16](#)
[Pacific Northwest 17](#)
[California 18](#)
[Alaska 19](#)
[Hawaii 20](#)



2007 Census by Watershed

Select the watershed region from the map or from the text below the map.

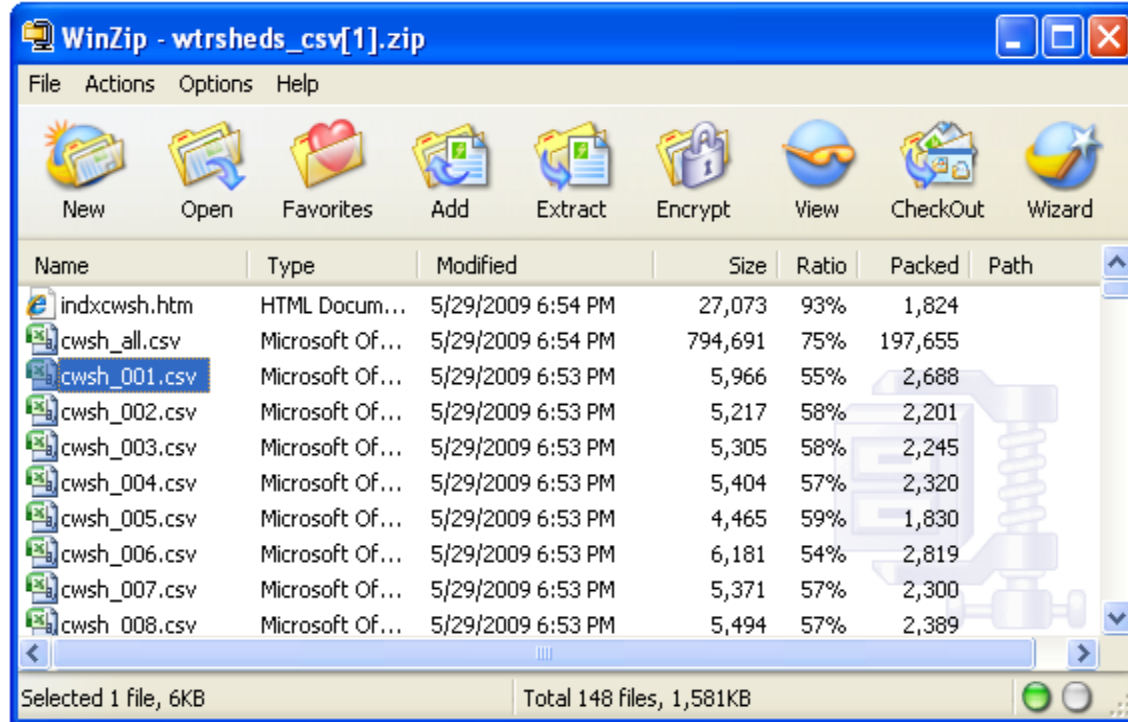


Full Watershed Report [PDF](#) | [TXT](#) | [CSV](#)



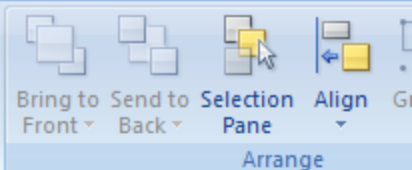
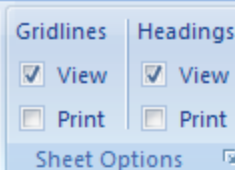
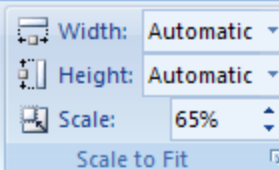
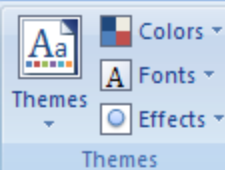
2007 Census by Watershed

Select the watershed region from the map or from the text below the map.





Home Insert Page Layout Formulas Data Review View Acrobat



M39

	A	B	C	D	E	F	G	H	I
1	2007 Census of Agriculture Watersheds: Released May 29, 2009, by the National Agricultural Statistics Service (NASS), Agricultural Statistics Board, U.S. Department of Agriculture								
2	Table 1. Summary by Hydrologic Unit Code: 2007 and 2002								
3	[For meaning of abbreviations and symbols, see introductory text]								
4									
5		US	US	H01	H01	H010100	H010100		
6				New England	New England				
7									
8	Item	2007	2002	2007	2002	2007	2002		
9									
10	Farms	farms	2204792	2128982	29226	24595	1187	1026	
11	Land in farms	acres	922095840	938279056	3285057	3238836	363999	374873	
12									
13	Land use:								
14	Total cropland	farms	1685339	1751450	22141	19675	1099	897	
15		acres	406424909	434164946	1204682	1263082	195246	189596	
16	Harvested cropland	farms	1328004	1362608	18826	16669	521	578	
17		acres	309607601	302697252	943029	949151	125522	143177	
18	Cropland used only for pasture or grazing	farms	404753	716202	4940	7706	137	185	
19		acres	35771154	60557805	103258	156537	6137	7053	
20	Cropland on which all crops failed								
21	or were abandoned	farms	89587	119642	982	1211	41	48	
22		acres	7405898	17069564	11530	19267	838	1571	
23	Cropland idle or used for cover crops or soil improvement								
24	but not harvested and not pastured or grazed	farms	360225	380300	4189	4051	795	532	
25		acres	37968749	37281096	139231	129304	60579	36063	
26	Cropland in cultivated summer fallow	farms	67960	72335	656	525	61	39	
27		acres	15671507	16559229	7634	8823	2170	1732	
28	Total woodland	farms	843294	818105	18651	16159	812	758	
29		acres	75098603	75878213	1525868	1563748	135508	148883	
30	Woodland pastured	farms	370297	379795	4515	3708	101	108	

USDA CENSUS OF AGRICULTURE

United States Department of Agriculture

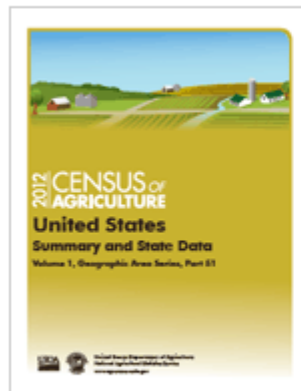
About the Census

Newsroom

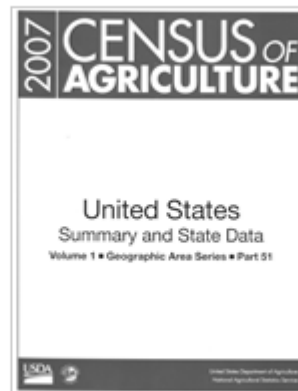
Publications

Your Census. Your Story.

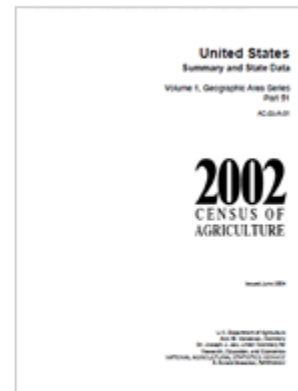
Publications



2012 Census of Agriculture



2007 Census of Agriculture



2002 Census of Agriculture





Census Publications

Choose a Census ▾

Find Current Data By

- > Congressional District
- > Race, Ethnicity & Gender
- > State & County
- > Topic

2012 Census Publications

- [Full Report](#)
- [Online Resources](#)
- [Subject Series](#)
- [Special Studies](#)
- [Rankings and Profiles](#)

2012 Census Full Report

Release Date

U.S. Summary and State Data

A comprehensive summary of agricultural activity for the United States and for each state. Includes number of farms by size and type, inventory and values for crops and livestock, operator characteristics, and much more.

[U.S. by Table](#) | [States by Table](#)

You can also download the report as a single text or pdf file.

[TXT](#) | [PDF](#)

To learn how we conducted the Census or to view the Census report form, use these links.

[Appendix A - Census of Agriculture Methodology](#)

[Appendix B - General Explanation and Report Form](#)

May 2, 2014

State and County Data

A comprehensive summary of agricultural activity for each state and its counties, or county equivalent.

[State-level Data](#) | [County-level Data](#)

May 2, 2014

[Puerto Rico - PDF](#) | [by Table](#) | [Municipios](#)

June 27, 2014

Released Census Products

Publication	Release Date	Format
US and State Volume 1	May 2, 2014	Quick Stats, PDF, TXT, limited hardback copies
Ag Atlas Maps	May 2, 2014	PDFs and GIFs by table
Desktop Data Query Tool	May 2, 2014	Downloadable desktop application
Ranking: Market Value of Ag Products Sold	May 2, 2014	US and State html tables
Quick Stats	May 2, 2014	Online statistics database
Ag Census Highlights(selected few)	May 2, 2014	PDF by key topics



Released Census Products

Publication	Release Date	Format
State and County Profiles	May 29, 2014	State and County PDFs
Puerto Rico Volume 1	June 27, 2014	PDF, TXT, and Municipio Profiles
Congressional District Profiles	July 28, 2014	State PDFs
American Indian Reservations	August 29, 2014	PDF, TXT, and CSV
Race, Ethnicity and Gender Profiles	August 29, 2014	US and State PDFs



Future Census Products

Publication	Format
Ag Census Web Map	Interactive web mapping application
Special Organics Tabulation	PDF and TXT
2013 Census of Aquaculture	PDF and TXT
2013 Farm and Ranch Irrigation Survey	PDF and TXT
Watersheds	PDF, TXT, and CSV
Typology	PDF and TXT
Specialty Crops	PDF and TXT
Specialty Crops for Outlying Areas: PR	PDF and TXT



Challenges?

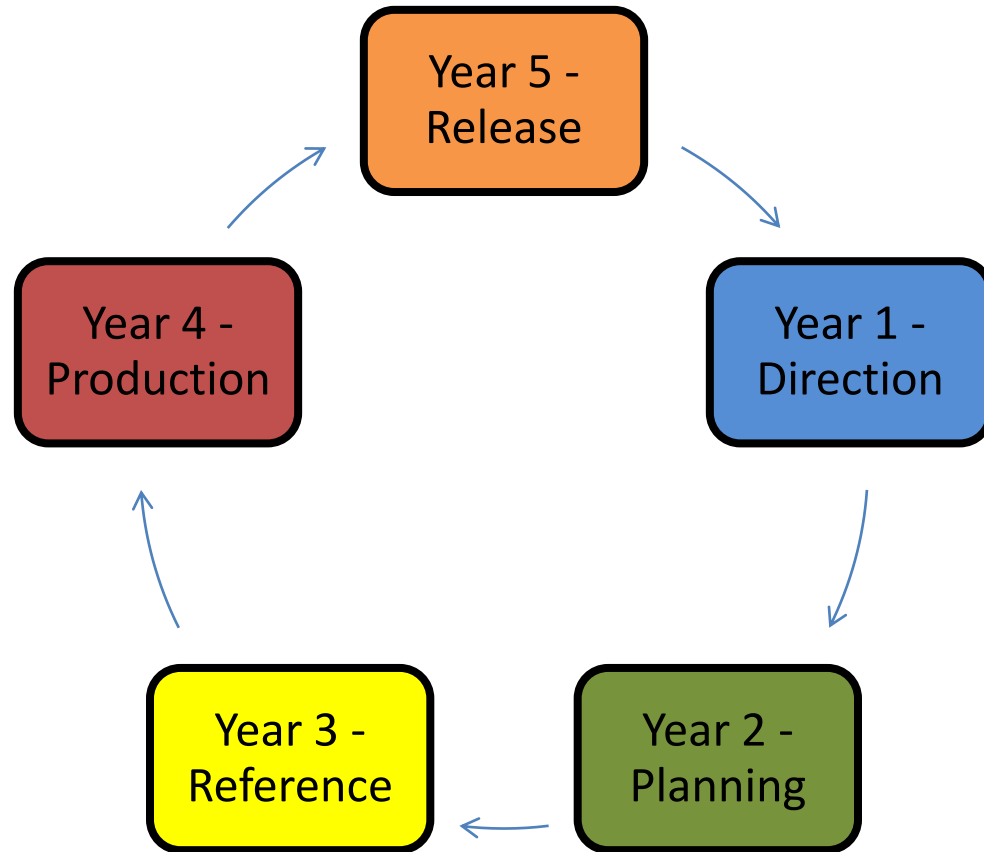


<http://librarysciencelist.com/core-competencies-of-librarianship/>

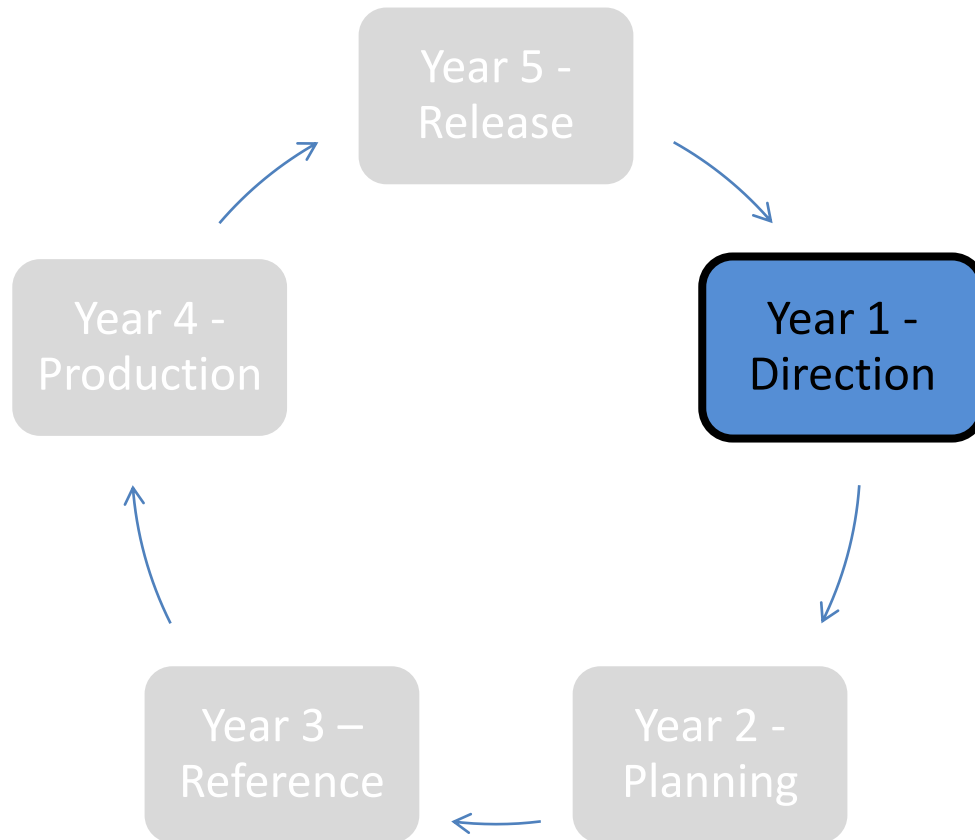
2012 CENSUS OF
AGRICULTURE
YOUR VOICE. YOUR FUTURE. YOUR RESPONSIBILITY.



Census Cycle



Census Cycle

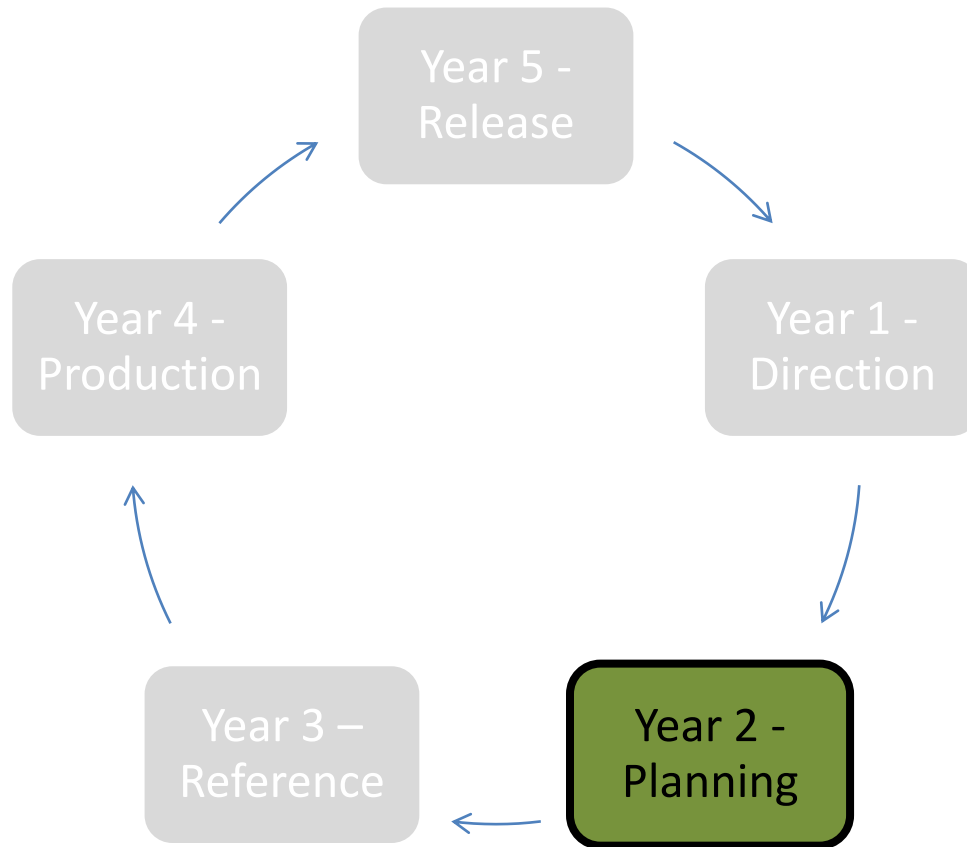


Year 1 - 2010

- Special Studies
- List clean-up
- Analysis & evaluation
- Research objectives
- Solicit new content



Census Cycle

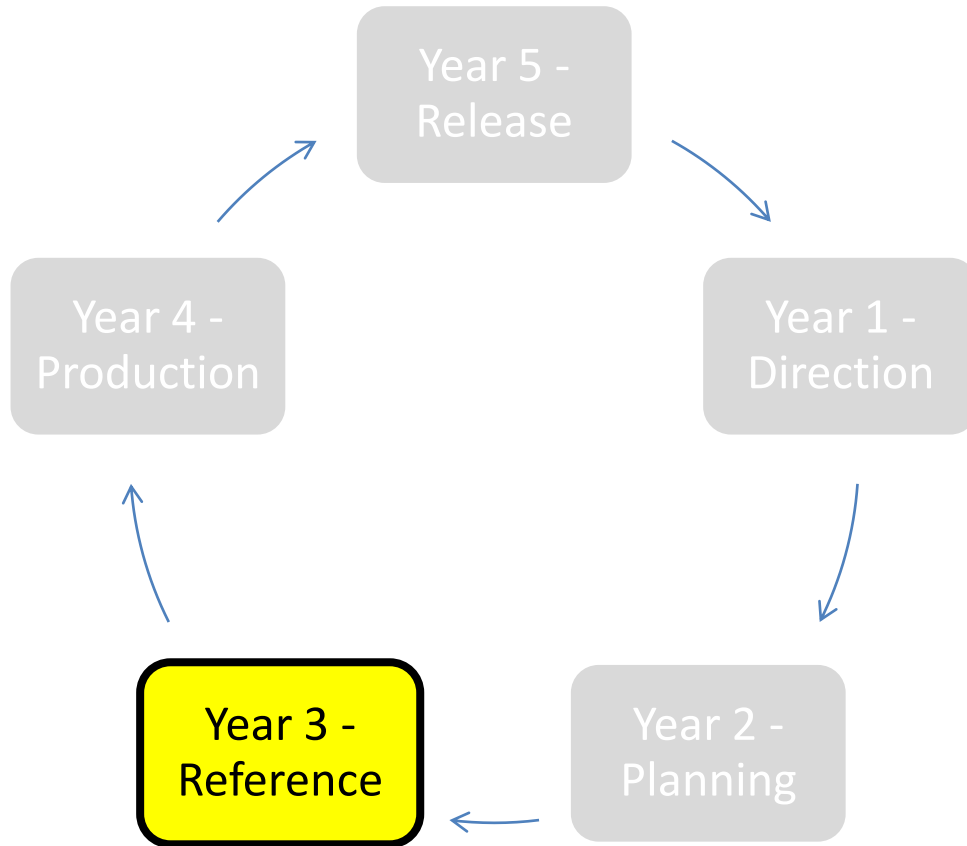


Year 2 - 2011

- Special Studies
- List building
- Testing
- Finalize Content



Census Cycle

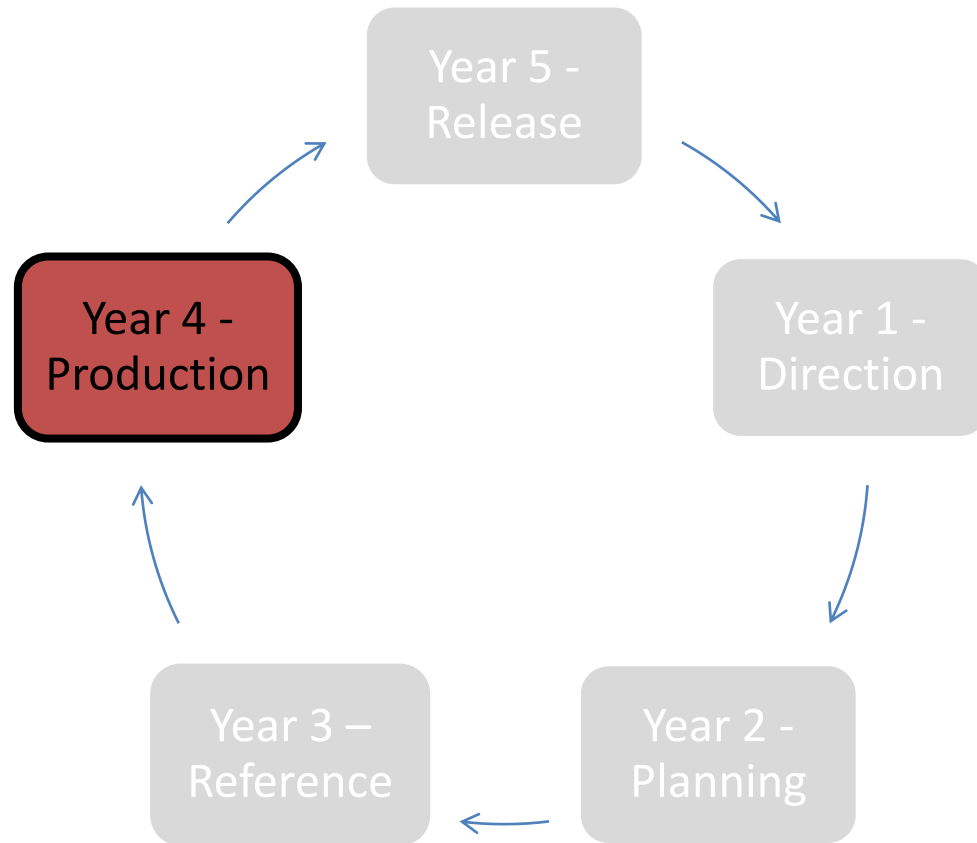


Year 3 – 2012

- Finalize Mail List
- Not on Mail determination
- Print materials
- Specifications
- Prepare publication tables



Census Cycle

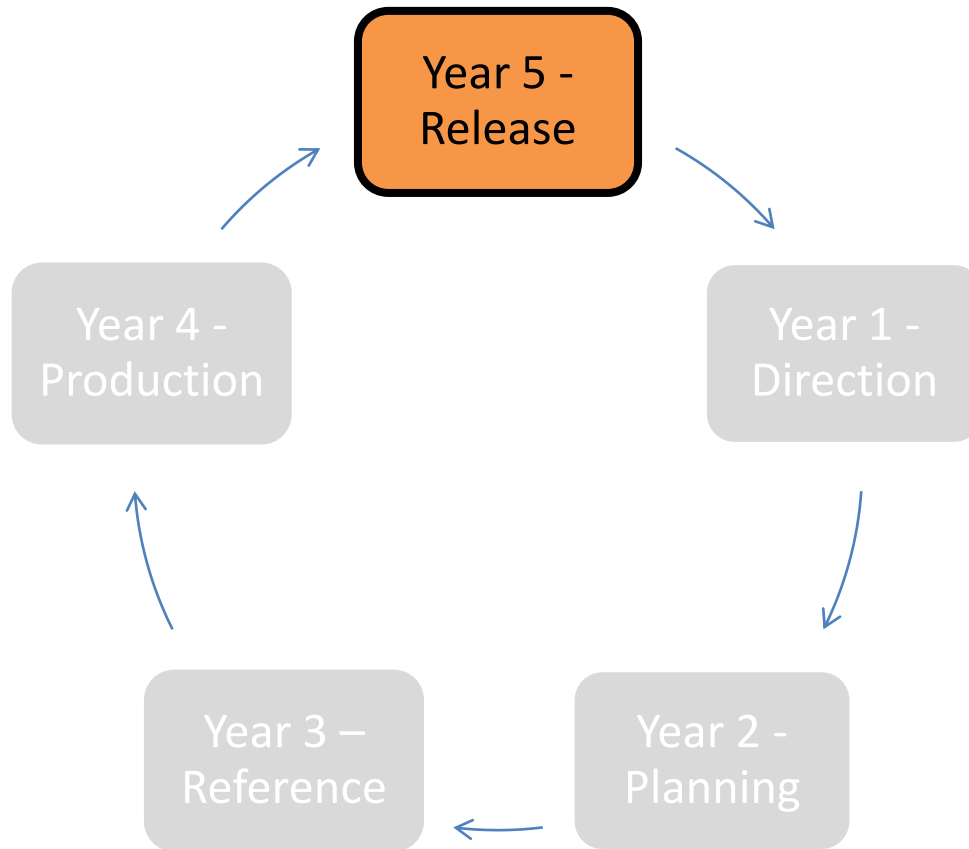


Year 4 - 2013

- Data collection
- Data processing
- Data editing
- Data analysis
- Adjustments
- Summarization
- Disclosure



Census Cycle

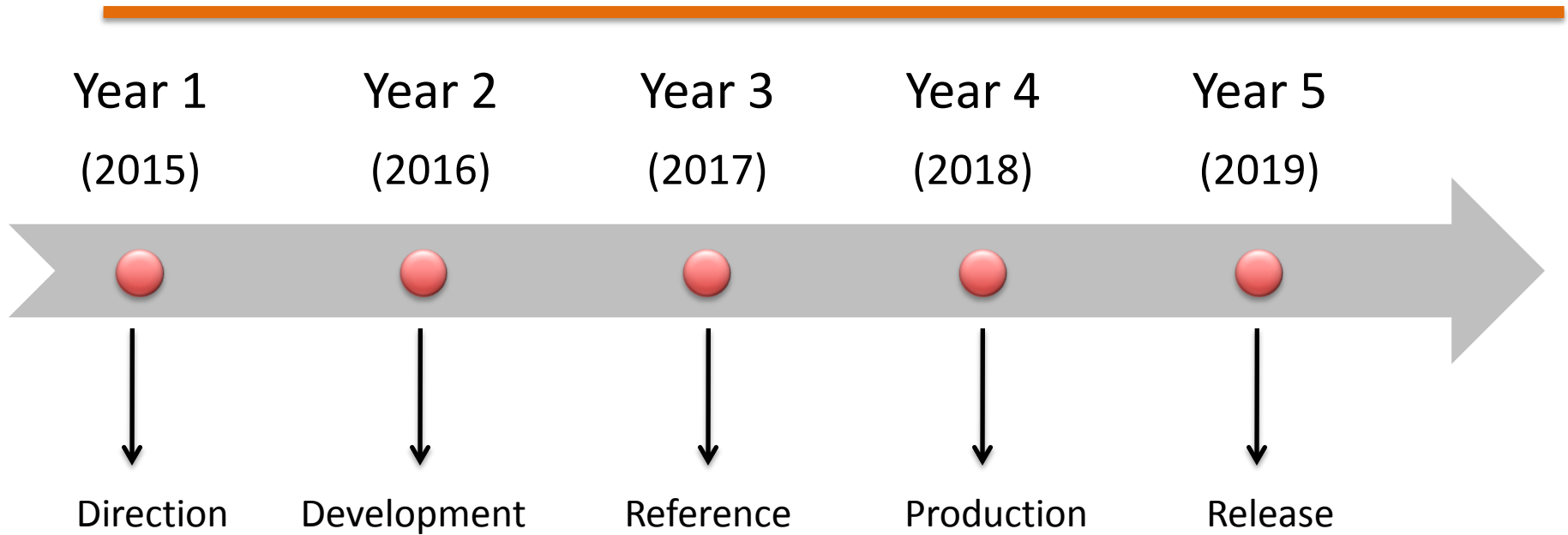


Year 5 - 2014

- Release
- Product 'roll-out'
- Interact with data users
- Special Studies



Five Year Census Cycle



Census Program Input Form

http://www.agcensus.usda.gov/Contact_Us/Census_Program_Input_Form/

News Release

E-mail Bookmark Translate A A A Print

Contact: Sue King, (202) 690-8122

USDA Continues to Seek Input for the 2017 Census of Agriculture

WASHINGTON, August 19, 2014 –The U.S. Department of Agriculture (USDA) continues to seek input for the 2017 Census of Agriculture. Conducted only once every five years by USDA's National Agricultural Statistics Service (NASS), the Census provides detailed data covering nearly every facet of U.S. agriculture down to the county level.

NASS released the complete 2012 Census of Agriculture results on May 2, 2014. In June, the agency began asking for content suggestions for the 2017 Agriculture Census and is accepting suggestions from the public. Any individual or organization may ask to add or delete items on questionnaire, as well as send any other ideas about the Census.

"Many industries want data that we currently don't collect," said NASS Associate Administrator Renee Picanso. "There are also some data that people think are no longer relevant with changing trends in agriculture. This is the time to express those ideas and concerns."

Comments can be submitted online at www.agcensus.usda.gov/Contact_Us/Census_Program_Input_Form/. Written suggestions may be mailed to: Census Content Team, Room 6451, 1400 Independence Ave, SW, Washington, DC 20250. NASS will notify the public before the comment period ends.

To learn more and to access the complete 2012 Census of Agriculture results, including State and County Profiles and all the other Census data and tools, visit www.agcensus.usda.gov.

NASS is the federal statistical agency responsible for producing official data about U.S. agriculture and is committed to providing timely, accurate, and useful statistics in service to U.S. agriculture.

USDA is an equal opportunity provider and employer. To file a complaint of discrimination, write to USDA, Assistant Secretary for Civil Rights, Office of the Assistant Secretary for Civil Rights, 1400 Independence Avenue, S.W., Stop 9410, Washington, DC 20250-9410, or call toll-free at (866) 632-9992 (English) or (800) 877-8339 (TDD) or (866) 377-8642 (English Federal-relay) or (800) 845-6136 (Spanish Federal-relay).

Contact Us

Solicitation of Input for the Census of Agriculture

The National Agricultural Statistics Service (NASS) is soliciting suggestions for changes to the Census of Agriculture. All submissions are time sensitive and must be received no later than September 30, 2014.

Suggestions must be submitted in writing and preferably with this internet-based form. [Click here](#) to reference the 2012 Census report forms.

Written suggestions may also be sent to:

Census Content Team
Room 6451,
1400 Independence Ave, SW
Washington, DC 20250

Name: <input type="text"/>	Address: <input type="text"/>
Affiliation: <input type="text"/>	City: <input type="text"/>
Phone: <input type="text"/>	State: <input type="text"/>
Email Address: <input type="text"/>	ZIP Code: <input type="text"/>

(Refer to our privacy policy to find out how we protect your information.)

What new or additional information is needed?

Why is the information needed?

At what level is the information needed? (U.S., state, county)

Submit

Questions?

