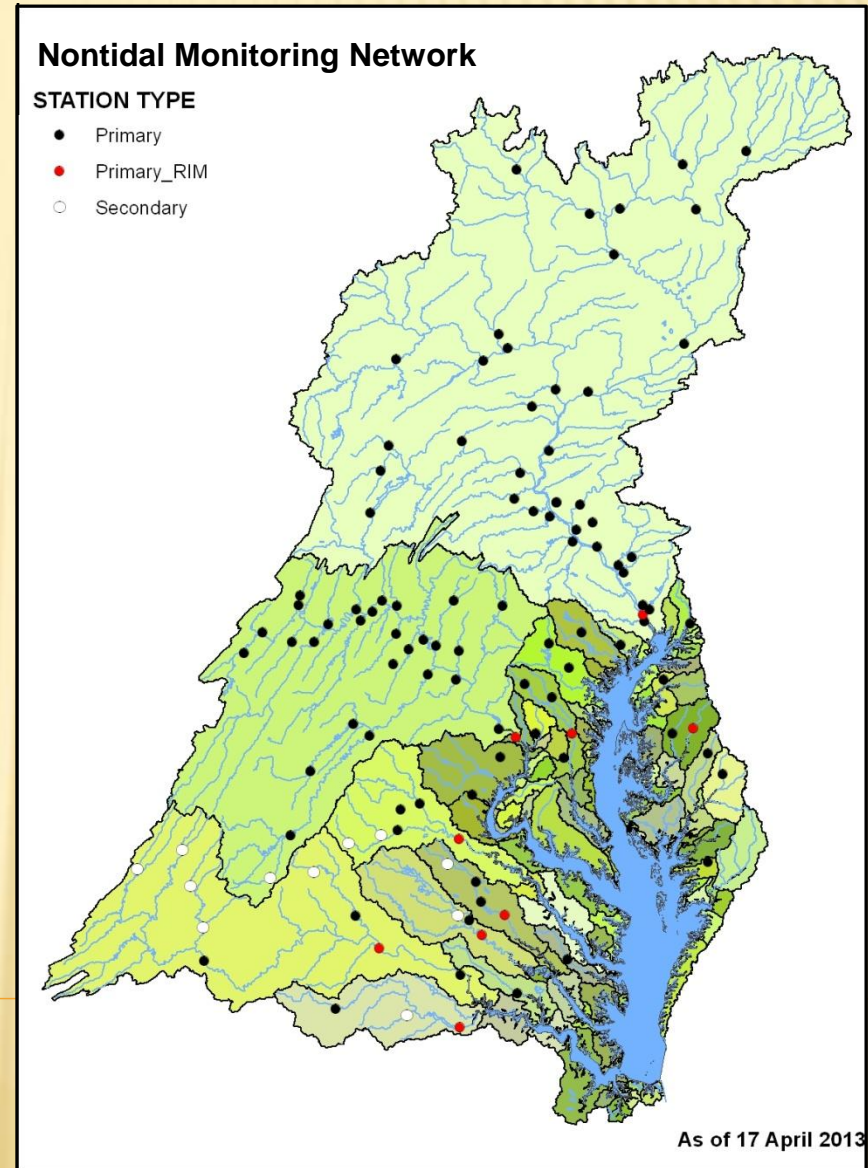


DUET

Status of using DUET for uploading data for Indicators

Nontidal Water Quality Workgroup
26 September 2013

Mike Mallonee



DUET: CURRENT DATA HOLDINGS

STATE	AGENCY	SOURCE	WATER YEAR	UPLOADED	IMPORTED	EVENTS	tab_DATA	tab_WAREHOUSE
DE	DEDNREC	DEDNREC	WY2012	YES	YES	30	906	957
MD	MDDNR	MDDNR	WY2012	YES	YES	376	7,161	9,588
MD	MDDNR	USGSMD	WY2012	YES	YES	96	1,738	2,455
PA	PADEP	PADEP, SRBC, USGSPA	WY2012	YES	YES	747	15,190	20,466
NY	SRBC	SRBC, NYSDEC	WY2012	YES	YES	87	1,374	1,577
VA	VADEQ	VADEQ/***, USGSVA	WY2012	YES	YES	535	9,651	10,991
WV	USGSWV	USGSWV	WY2012	YES	YES	132	1,714	2,159
				WY2012 TOTAL:		2,003	37,734	48,193
MD	MDDNR	MDDNR	WY2013 (1ST QTR)	YES	YES	99	1,726	2,385
VA	VADEQ	VADEQ/***, USGSVA	WY2013 (First 3 QTRs)	YES	YES	451	8,318	9,665
				WY2013 TOTAL:		550	10,044	12,050
				DATABASE TOTAL:		2,553	47,778	60,243

NTN WY2012 DATA SUBMITTALS

AGENCY	UPLOAD Due Date = 3/15/2013	IMPORT Due Date = 3/31/2013
DEDNREC	3/15/2013	4/1/2013
MDDNR	3/22/2013 – 4/4/2013	4/5/2013 *
PADEP	3/13/2013	5/5/2013
SRBC	3/18/2013	5/13/2013
USGSMD	4/11/2013	6/4/2013 **
USGSWV	6/18/2013	7/17/2013
VADEQ	3/6/2013 – 3/15/2013	3/6/2013 – 3/26/2013

* Oct – Dec 2011 submittals originally submitted to DUQAT; those submittals were put into DUET format and imported 6/4/2013.

** Dataset missing PN, TDN, and TN; had to download directly from NWIS and append to submitted dataset for Mike Langland data file.

NTN WY2012 DUET DATA FOR INDICATORS

NTN WY2012 dataset for Mike Langland for Loads & Trends Analysis:

- May 2: Began data transformation from CBP format to ML format.
- May 3: Sent DEDNREC dataset as a test file for formatting requirements.
- May 23: DEDNREC, MDDNR, SRBC, and VADEQ dataset delivered.
 - DUET issue with Calculated Parameters routine prevented PADEP and October – December 2011 data inclusion.
- June 13: DEDNREC, MDDNR, PADEP, SRBC, and VADEQ dataset delivered.
- July 9: USGSMD dataset added.
- July 17: Final dataset delivered.

CURRENT WORK ON DUET

DUETv2

- Will be used for all tidal and nontidal data submittals.
- Began requirement gathering April 2013
- Currently in Test phase before moving to production mid October.
- Tidal data will be migrated from the WQ_1 database to the new DUET WaterQuality database (blackout period necessary).
- Timeliness Checks have been improved for all submittals.
- Parameter Completeness checks updated.
- An Event Completeness check has been discussed and will be included in the development of DUETv3 (winter 2013 – spring 2014).

FAST PROCESS

CBP Nontidal Network Water Year Data Life Cycle and Phases

Water Year	Calendar Year 2011					Calendar Year 2012					Calendar Year 2013					Calendar Year 2014					Calendar Year 2015															
Month:	J	F	M	A	M	J	J	A	S	O	N	D	J	F	M	A	M	J	J	A	S	O	N	D	J	F	M	A	M	J	J	A	S	O	N	D
WY 2012	Planning and preparation					Data collection and review					Upload review transform aggregate data, construct databases		Publish data, to standards		Data Search and Discovery																					
WY 2013						Planning and preparation		Data collection and review							Upload review transform aggregate data, construct databases		Publish data, to standards		Data Search and Discovery																	
WY 2014											Planning and preparation			Data collection and review										Upload review transform aggregate data, construct databases		Publish data, to standards ¹										

¹ Data Search and Discovery would follow this phase.

ISSUES TO DISCUSS

- WY2014 Metadata call
 - Expected Parameters
 - includes station changes
 - POC
 - Methods
 - includes method changes and MDL table
- 'CC' Problem Code
- 2-JMS113.20 – Primary or Primary_RIM station for analyses?
 - Bias & Precision Summary Reports
 - Loads & Trends Analyses