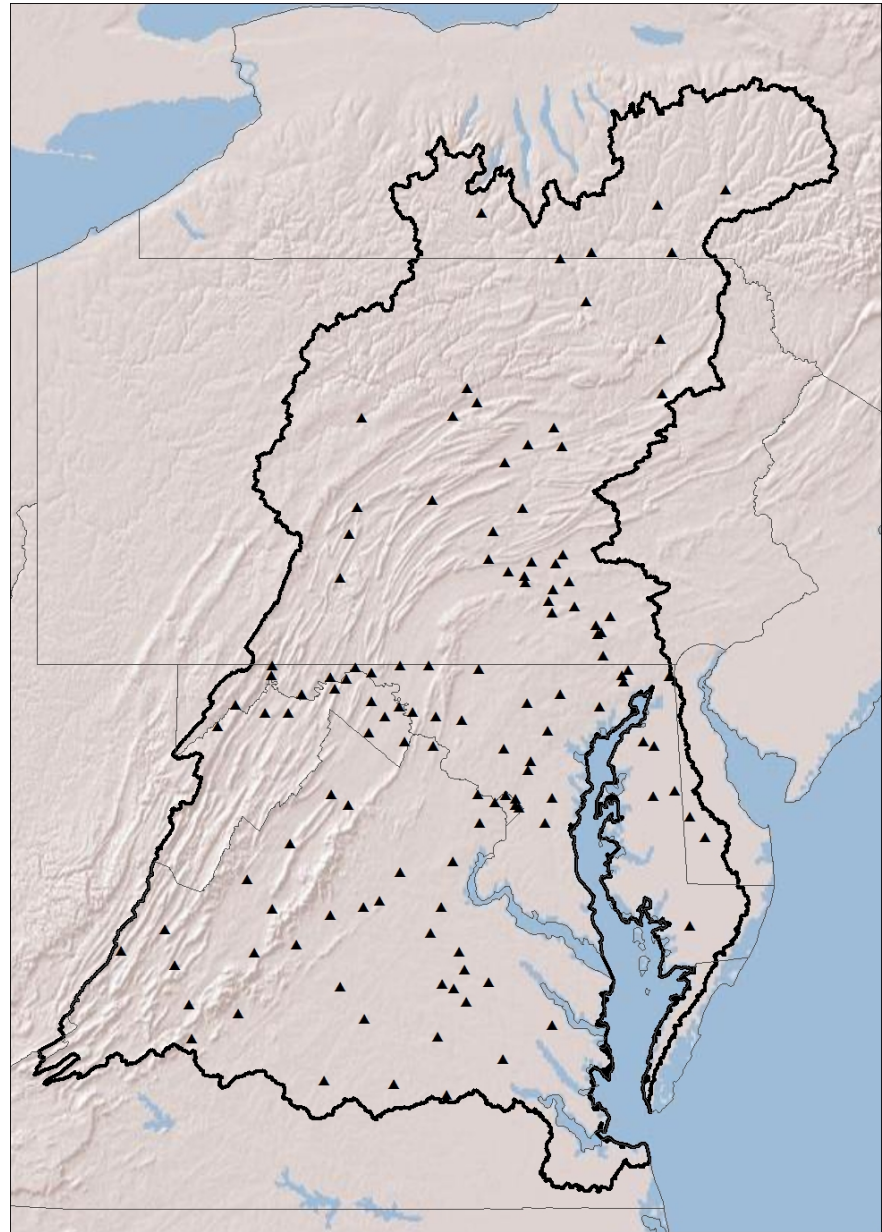


## Chesapeake Bay Nontidal Network

- 126 Stations (May 13, 2013)
- 115 Trend and Load Stations
- 11 Trend only Station



# What constitutes a "Network Station"

- 1) Commitment to Long-Term Operation.
- 2) Adoption of sampling and analytical protocols.
- 3) Minimum sampling levels
  - A) monthly fixed frequency samples (12 per year) (secondary trend sites)
  - B) targeted storm-flow samples (8 per year minimum)
- 4) Sampling tied to a streamflow gage.
- 5) Commitment to QC
- 6) optional enhancements.
  - A) additional sampling
  - B) Continuous water-quality measures
  - C) automatic sampler supplement

# Number of Sites By Location

	Primary	Secondary	Grand Total
DC	3		3
DE	2		2
MD	32		32
NY	6		6
PA	37		37
VA	25	11	36
WV	10		10
Grand Total	115	11	126

<b>Sampling Agencies</b>	<b>Number of stations</b>
DEDENRC	2
MDDNR	20
PADEP	6
SRBC	25
SRBC, NYSDEC	2
USGSMD	10
USGSPA	16
USGSVA	17
USGSWV	10
VADEQ	11
VADEQ, USGS	7
<b>Grand Total</b>	<b>126</b>