

Objective 1: Land Cover and Land Use Updates

April 3rd, 2019 : Forestry Work Group

Rachel Soobitsky

Our Mission



Connect

Innovation

Conserve

Restore

Precision Conservation



*“Getting the right practices, in the right places,
at the right scale, and
making sure they are working”*

CBP Proposal

Objective 1: Land Cover Updates

- Partnering with University of Vermont

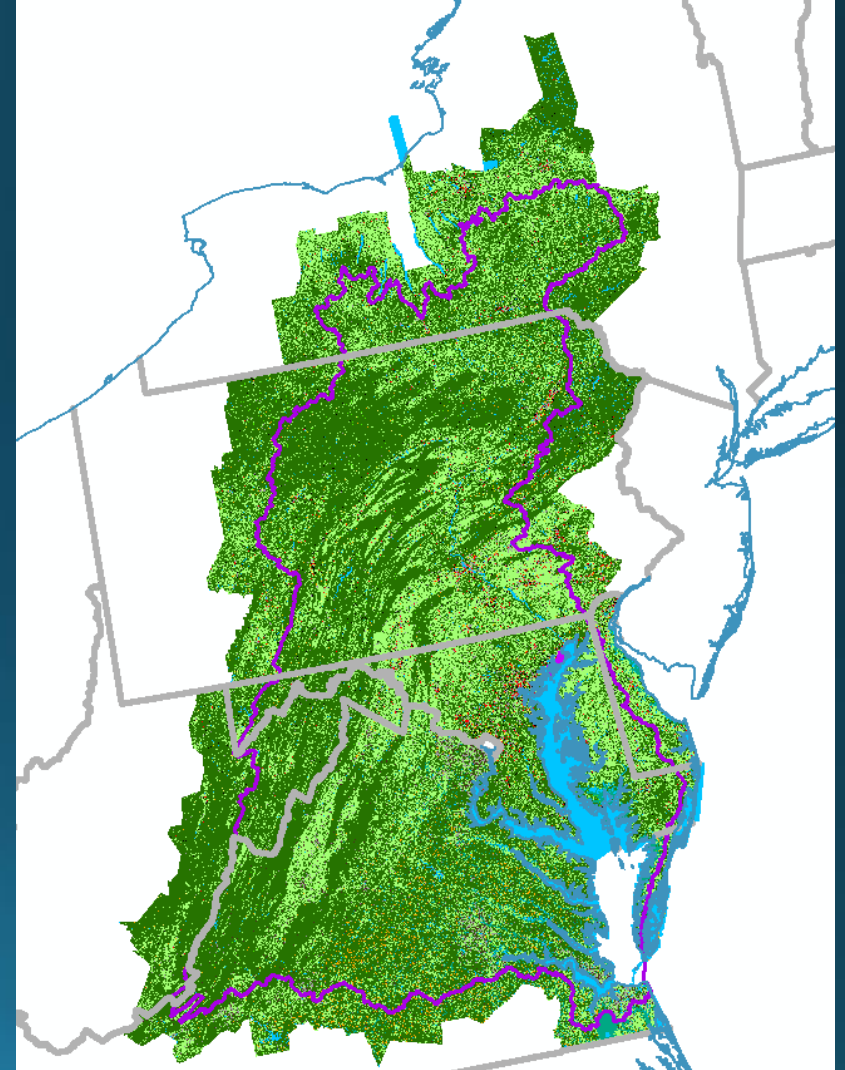
Objective 2: Hydrology & Ditches

- Partnering with UMBC

Objective 3: BMP Mapping & Tracking

- Partnering with Chesapeake Commons and Drexel University

Objective 4: General Geospatial Support



Partnership- Objective 1



Chesapeake Bay Program
Science. Restoration. Partnership.



University of Vermont
Spatial Analysis Lab

Data Motivation

TMDL- 2025 Pollution Reduction Goals

- Maryland
- Washington D.C.
- New York
- West Virginia
- Delaware
- Pennsylvania
- Virginia

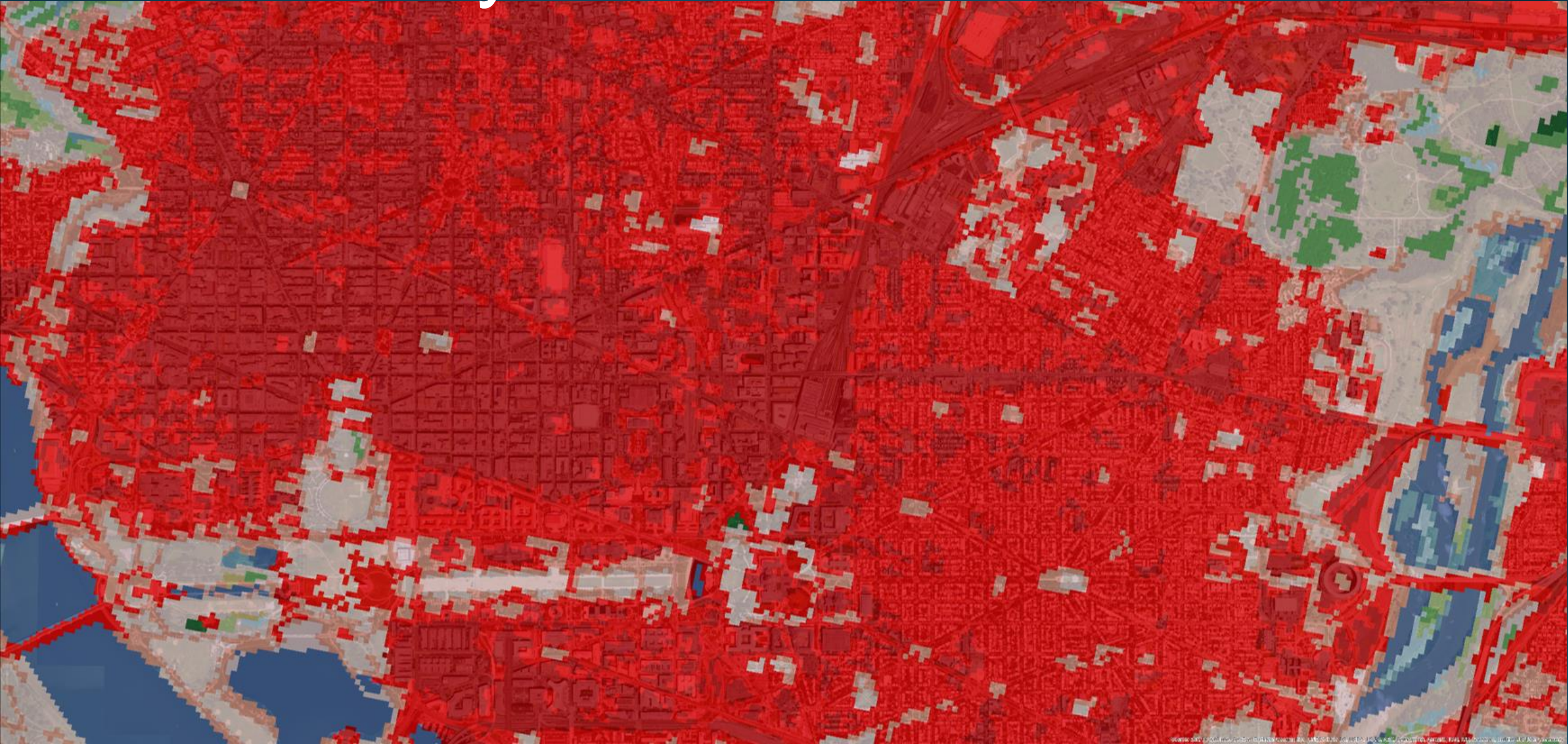


NASA Satellite Imagery

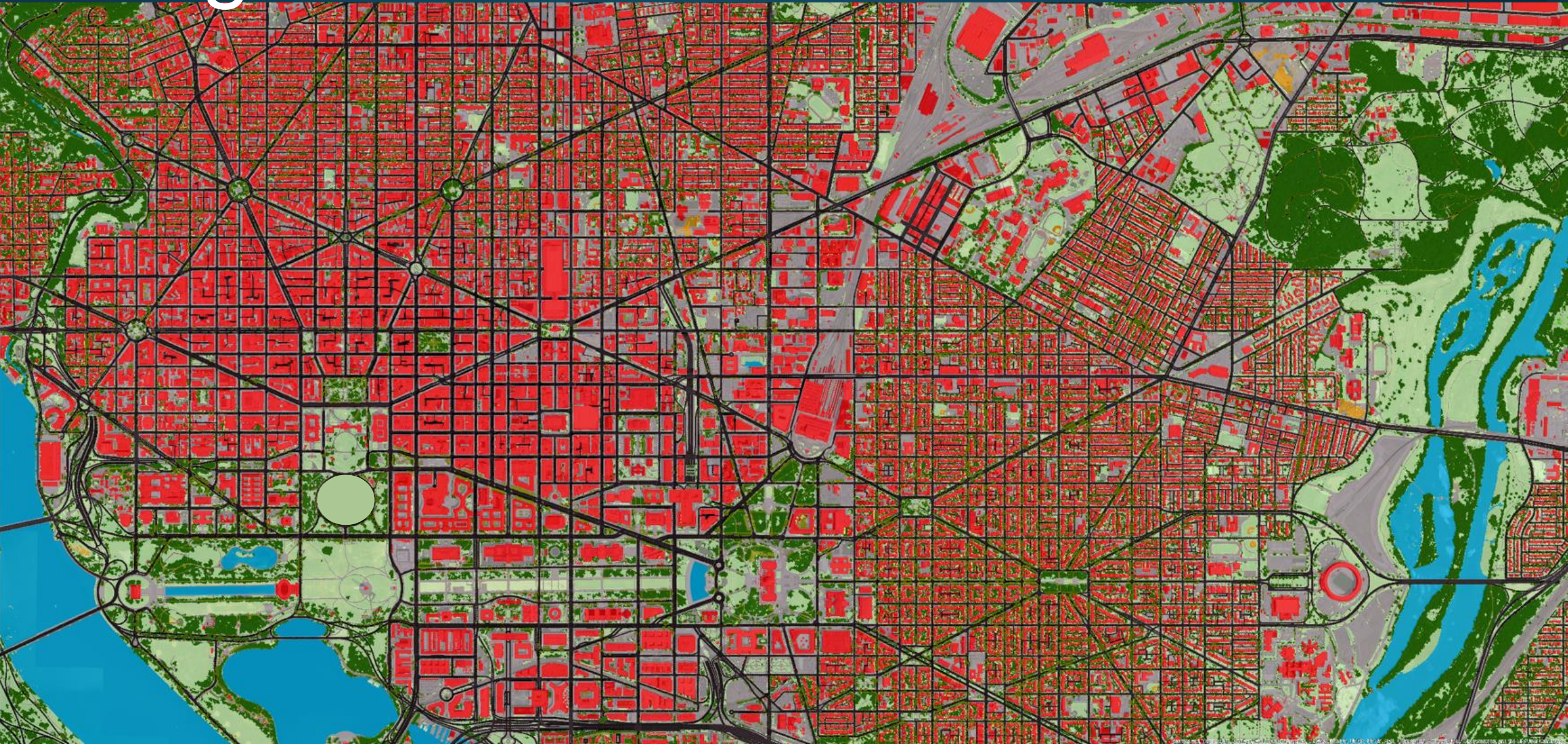


York County Planning Commission

Previously Available Data

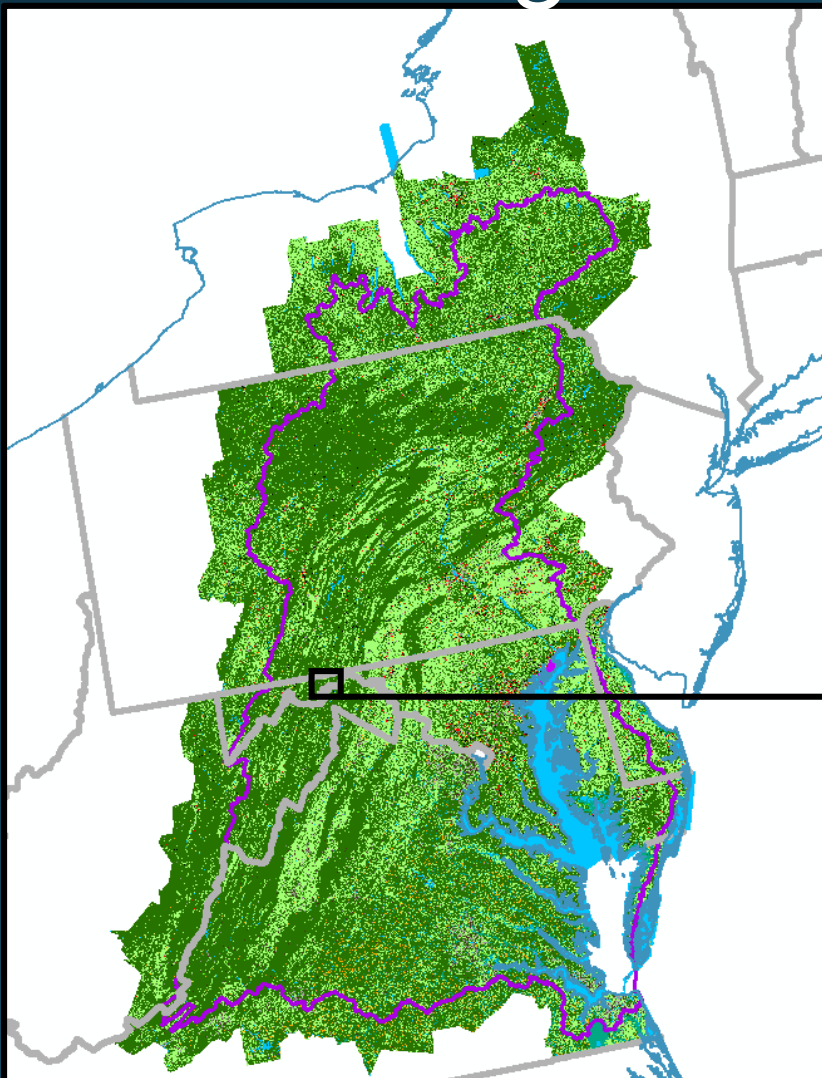


High-resolution Data



High-resolution Data

Planning at the Parcel Scale

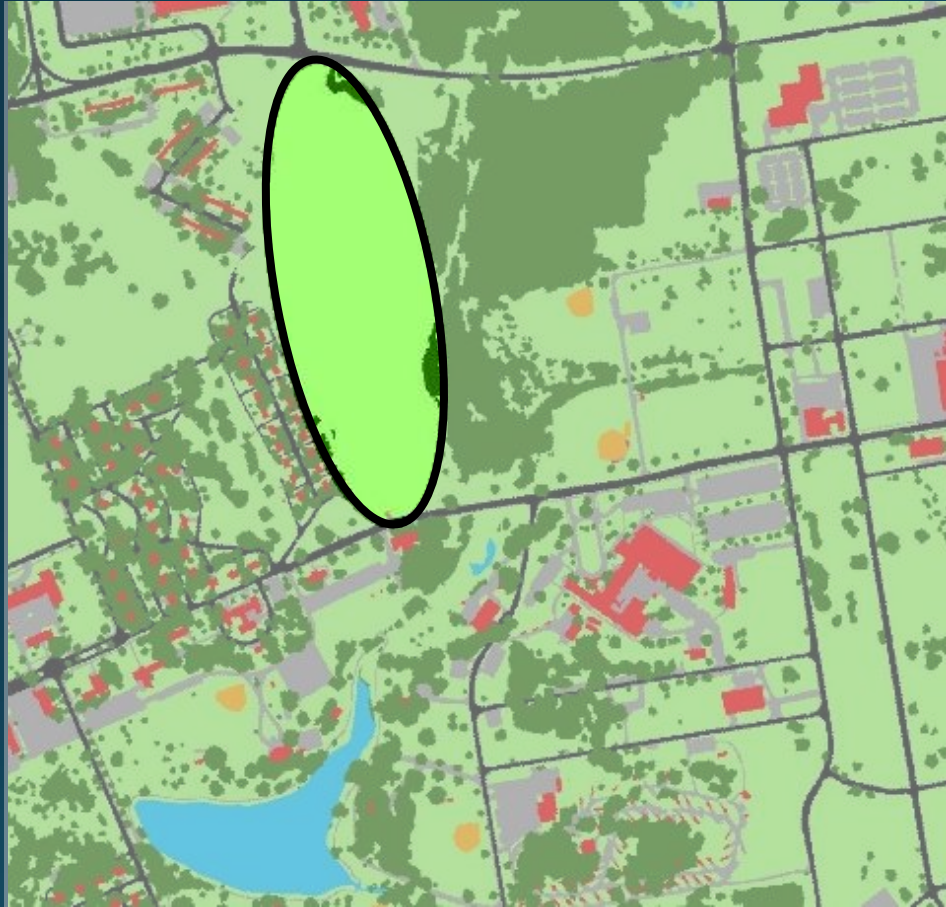


Change Detection

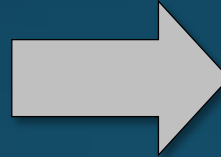


University of Vermont
Spatial Analysis Lab

CID
CONSERVATION
INNOVATION
CENTER
CHESAPEAKE CONSERVANCY



2007



2013

Land Cover Update



University of Vermont
Spatial Analysis Lab



Background	Tree Canopy
Barren	Tree Canopy Over Other Impervious
Low Vegetation	Tree Canopy Over Roads
Other Impervious	Tree Canopy Over Structures
Roads	Water
Scrub-Shrub	Wetlands (emergent)
Structures	

Land Use Conversion

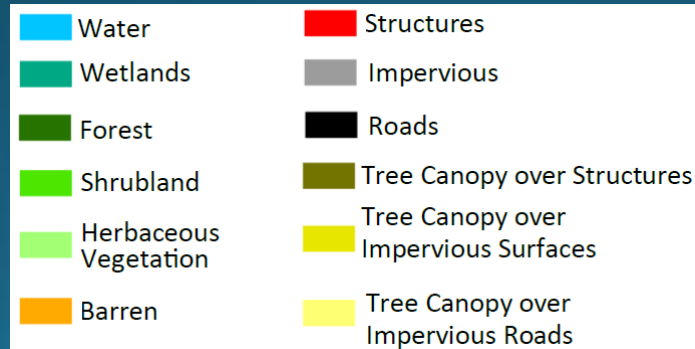
2013 NAIP Imagery



2013 Land Cover



2013 Land Use



Why planimetric enhancement?



Purple: Most updated county buildings dataset
Red: Buildings classified from our remote sensing techniques

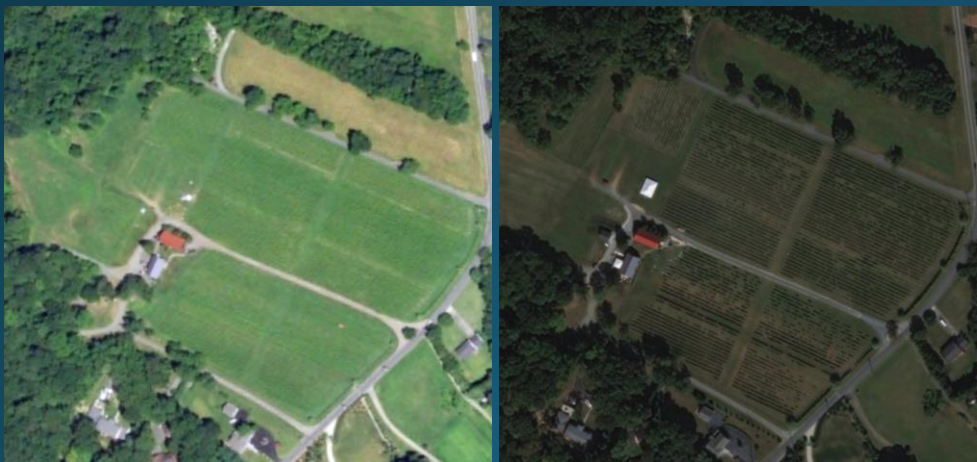
Outreach

- Emailed counties/municipalities in Chesapeake Bay watershed (as of 3/29/19):
 - MD - 24/24 counties responded
 - DC – datasets online
 - DE – 3/3 counties responded
 - WV – 10/14 counties responded
 - VA – 70/98 counties/municipalities
 - PA – 33/43 counties responded
 - NY – 13/20 counties responded

Research into Secondary Classes

High confidence to map the following:

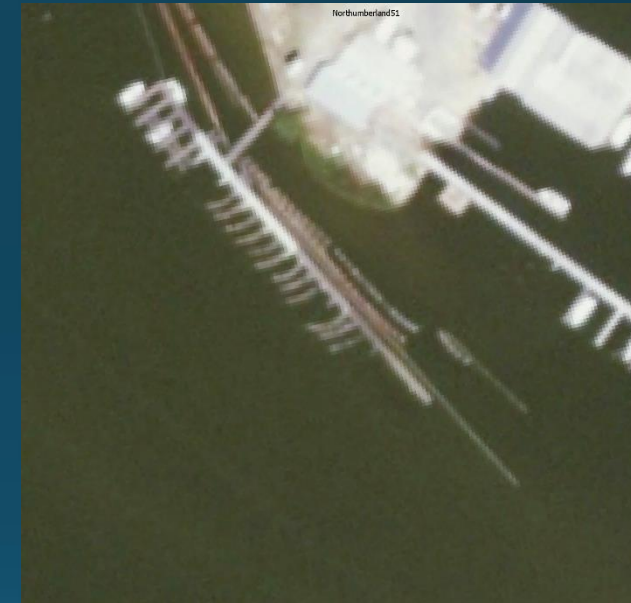
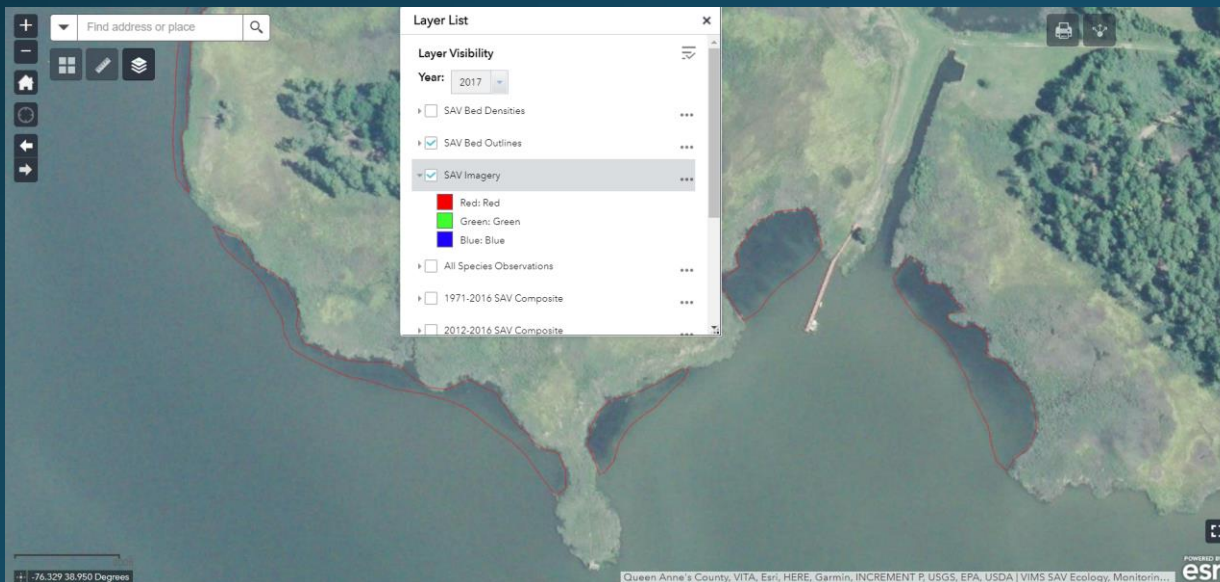
- Chicken operations using CIC's Community Analyst methodology
- Center-Pivot Irrigation using MSFT's AI models
- Deciduous vs. Evergreen using UVM's methodology where there is leaf-off imagery
- Nurseries, Vineyards, Orchards using CIC's Community Analyst methodology
- Solar Fields using MSFT's AI model
- Tidal vs. Non-Tidal/Forested wetlands using MSFT's AI model or UVM methodology
- Vegetation height using height data derived by UVM



Research into Secondary Classes

Lower confidence to map the following:

- Aquaculture
- Cattle operations
- Cover-crop
- Cropland vs. Pasture
- Greenhouses
- Submerged Aquatic Vegetation



2016 NAIP

Research into Secondary Classes

- Silviculture
 - LCMAP (cleaned up)



Questions?

- rsoobitsky@chesapeakeconservancy.org