

Octoraro Watershed Association

Rupert Rossetti
Secretary
&
Board Member for Maryland

www.theowa.org

**517 Pine Grove Road
Nottingham, Pa. 19362
Phone: (717) 529-2132
octorarowa@gmail.com**

Octoraro Watershed:



208 square miles in Lancaster and Chester Counties PA and Cecil County MD.

Outfalls into the Susquehanna below the Conowingo Dam

Population ~ 45,000

Octoraro Watershed: Land Use



Largely rural landscape

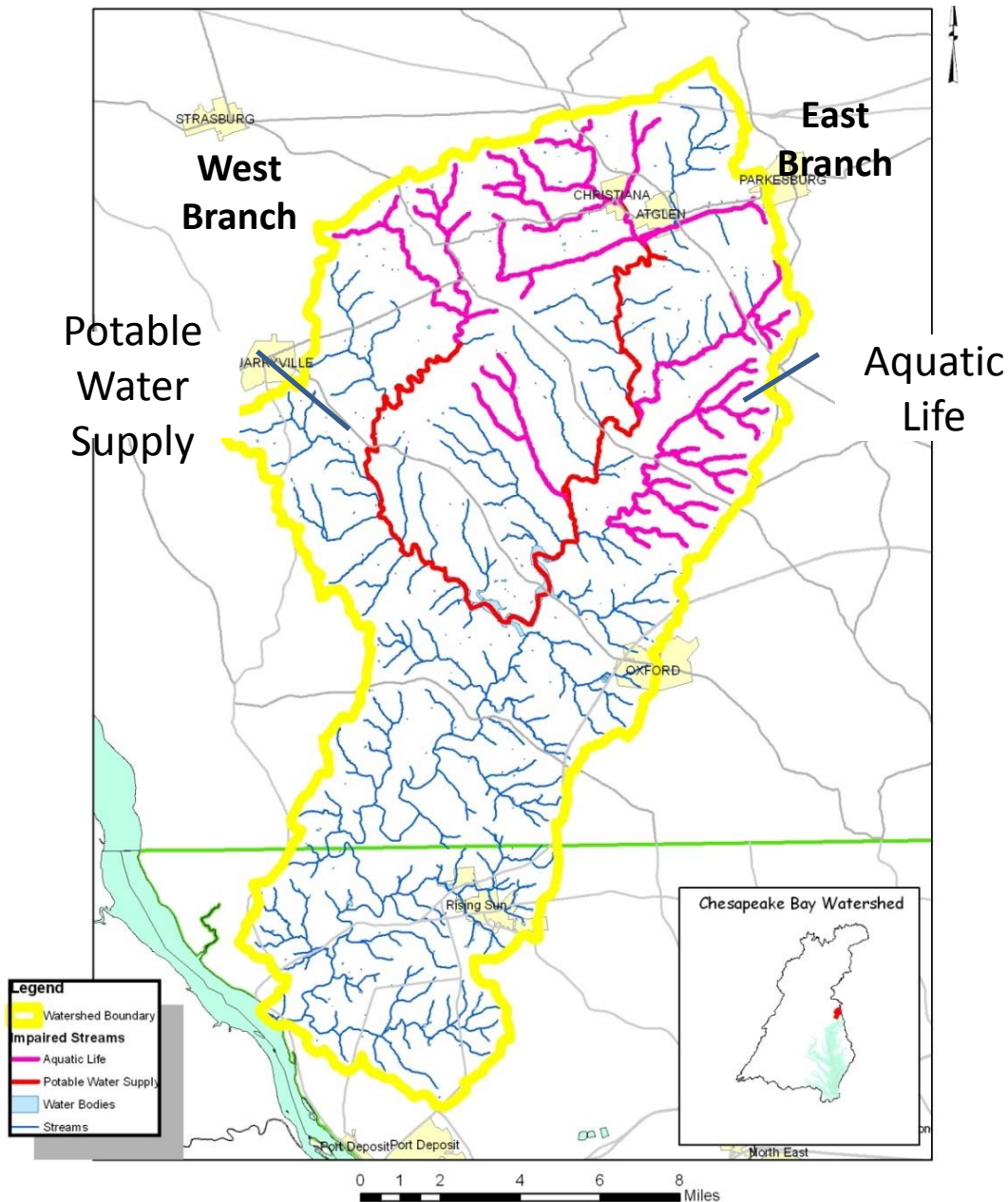
**Land Use:
66% cropland & pasture;
24% forest**

**70 percent of farmers are Plain Sect
(Old Order Amish)**



Photo credit - Peter Essick

Octoraro Watershed: Impaired Streams



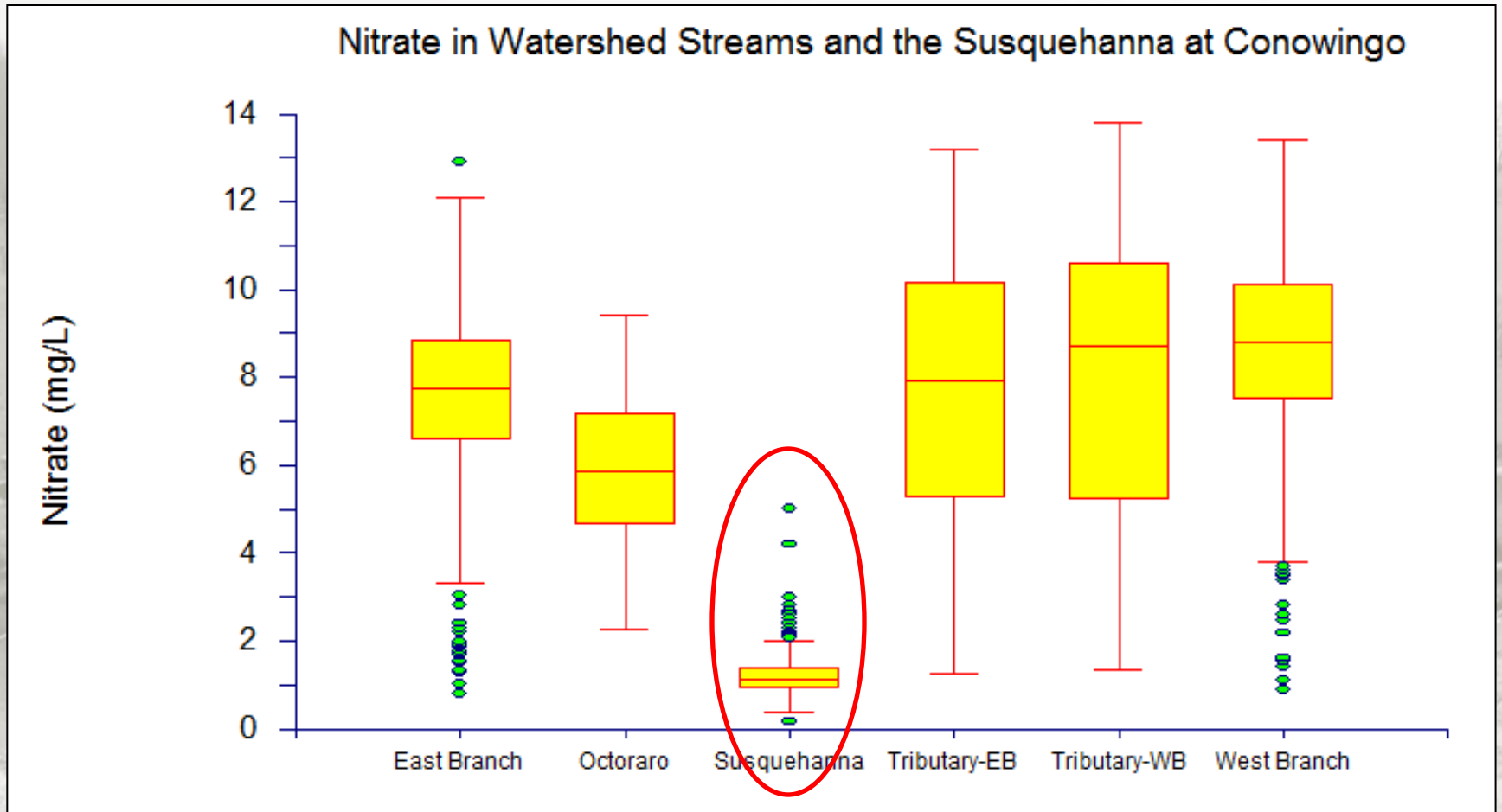
Draft TMDL above reservoir

- Impaired for N, P & Sediment

Impairments Caused By:

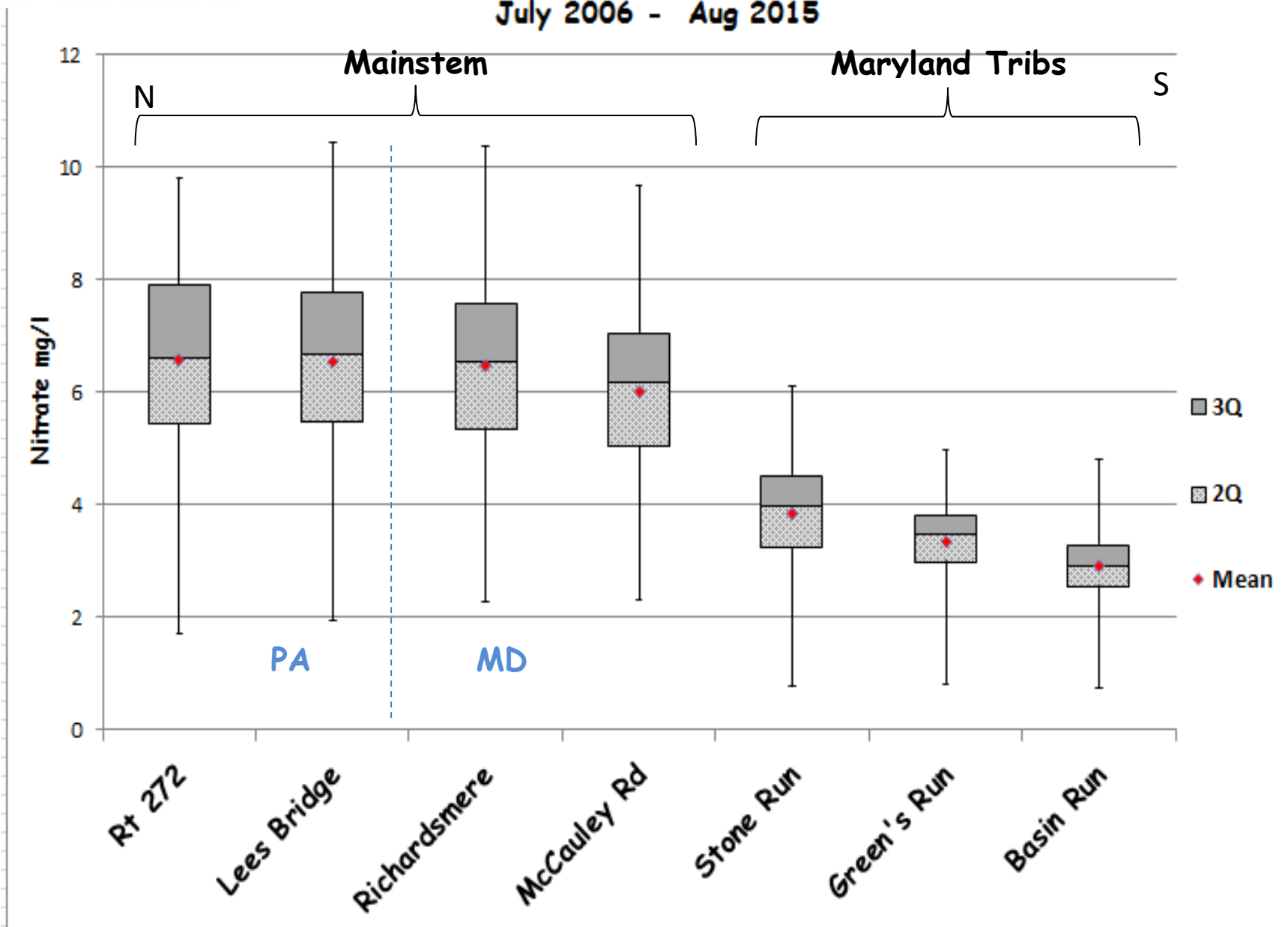
- Agriculture – Nutrients
- Agriculture – Siltation
- Agriculture – Other Habitat Alterations

Nitrate Comparisons Among Streams



Susquehanna @
Conowingo Pool

Lower Octoraro & MD Tributary Nitrate Data July 2006 - Aug 2015



Octoraro Nitrate Task Force Monitoring: 2006 - present



**Founded in 1967.
Celebrating 48
years of preserving
and protecting
the natural and
historic resources
of the Octoraro.**

Our Mission

To restore and protect the natural resources of the scenic Octoraro Creek, and to preserve and protect its farmlands, forest, and rural heritage through education, outreach, restoration and community stewardship.





PA:

Current Focus

- **Amish Outreach**
 - in our 14th Year
- **70 Conservation Plans in past four years with ~20% implementation.**



12 August – Dirt pile redeployed; Wet Swale “complete”

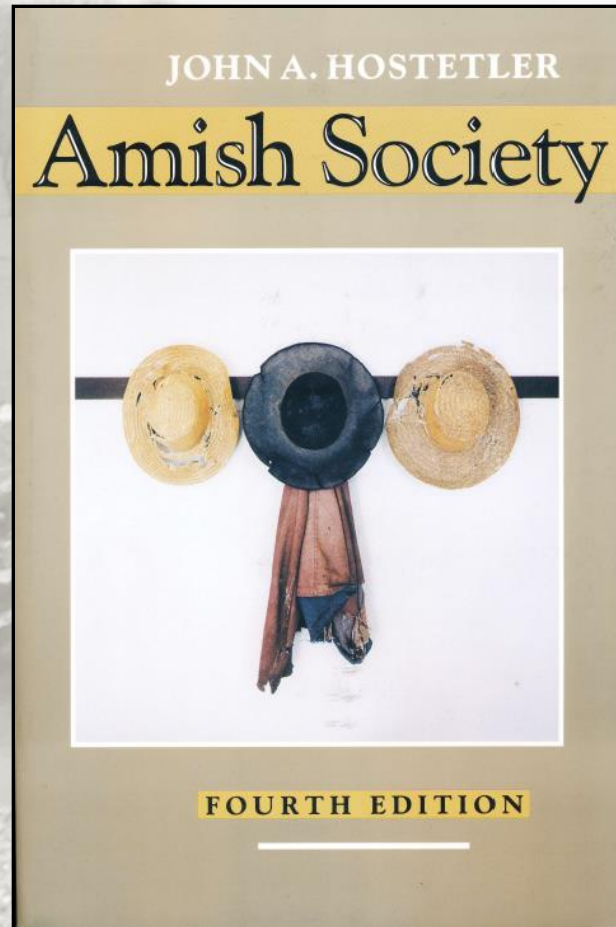


MD:

Current Focus

- **“Urban” Stormwater**

What We Do: Amish Outreach Efforts



- **The OWA pioneered the approach of using Amish liaisons to work with Amish farmers**
- **Targeted Amish education efforts -**
 - At the farmer level
 - With Amish schools
 - With Amish women
- **Amish-targeted brochures and pamphlets**
- **Working with the bishops and churches**



What We Do: Community Engagement

- Stream Clean-ups
- Tree Plantings
- BMP Maintenance
- Water Quality Monitoring





What We Do: Organizational Sustainability

- **Partnerships**
- **Strategic Plan**
- **Succession Planning**
- **Grants & Unrestricted Donations**



Chester County
Conservation District



North Bay

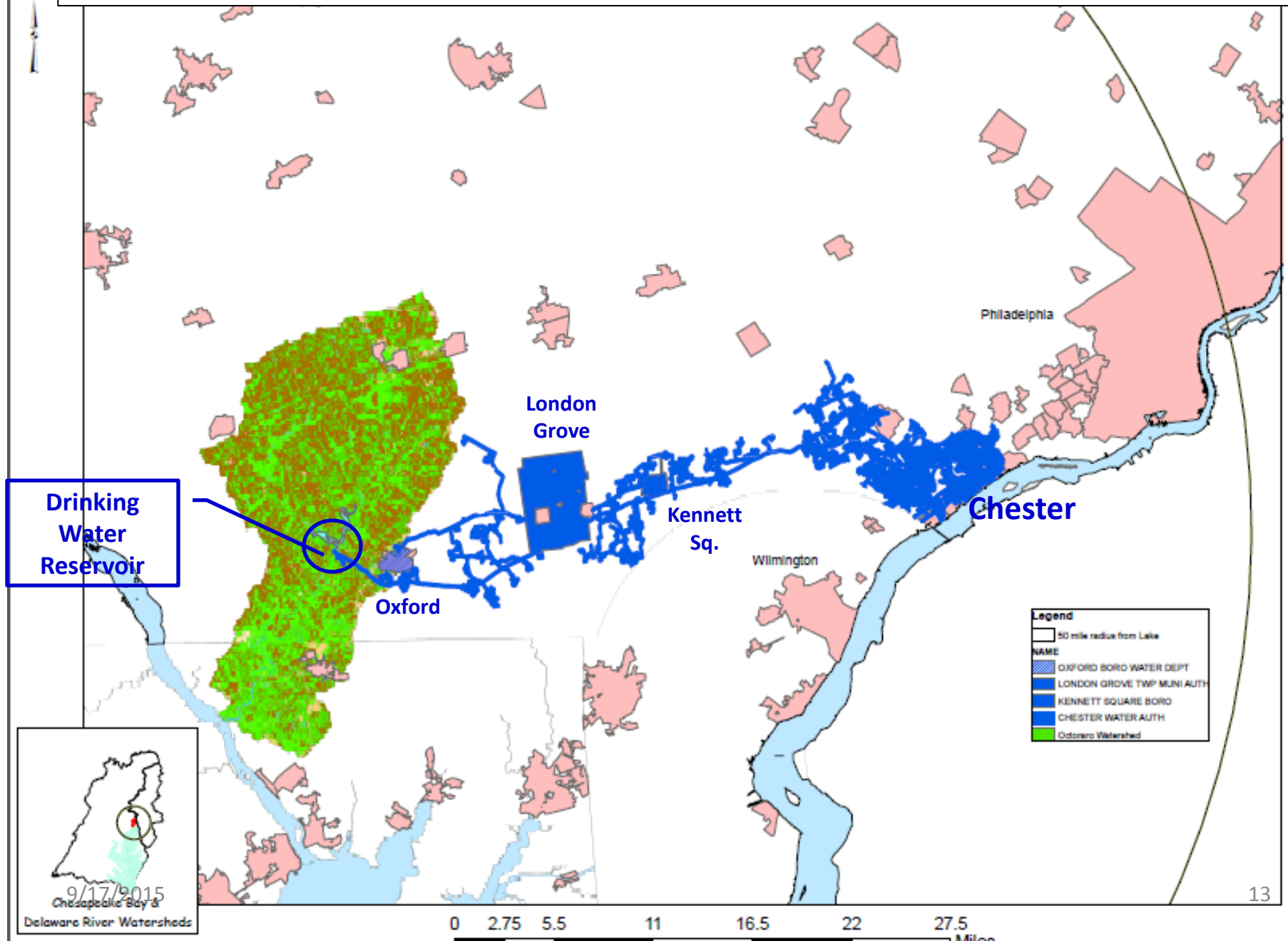




We could not do it without our
Funders, past and present.
Thank you all!



Chester Water Authority Service Areas

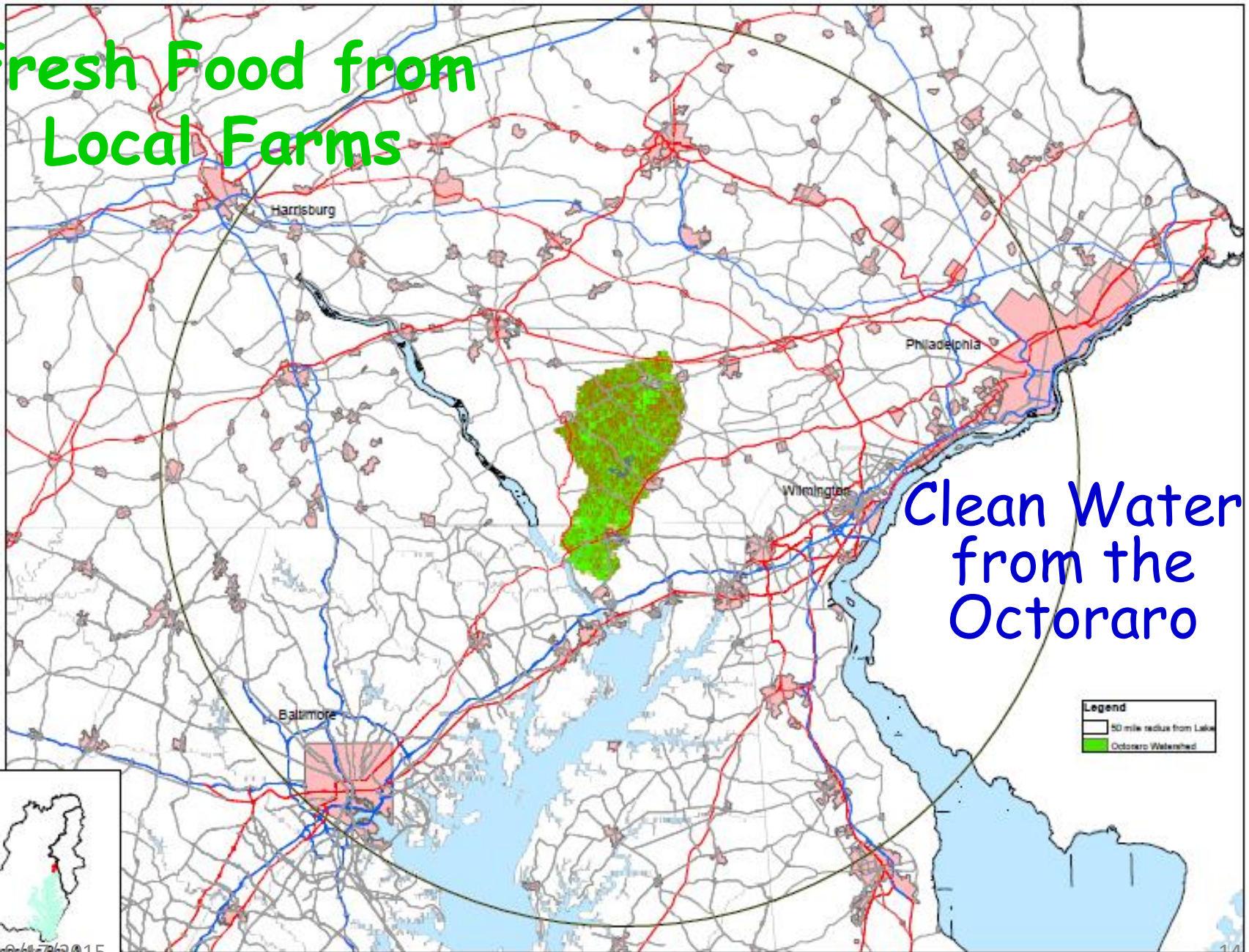


Octoraro Watershed

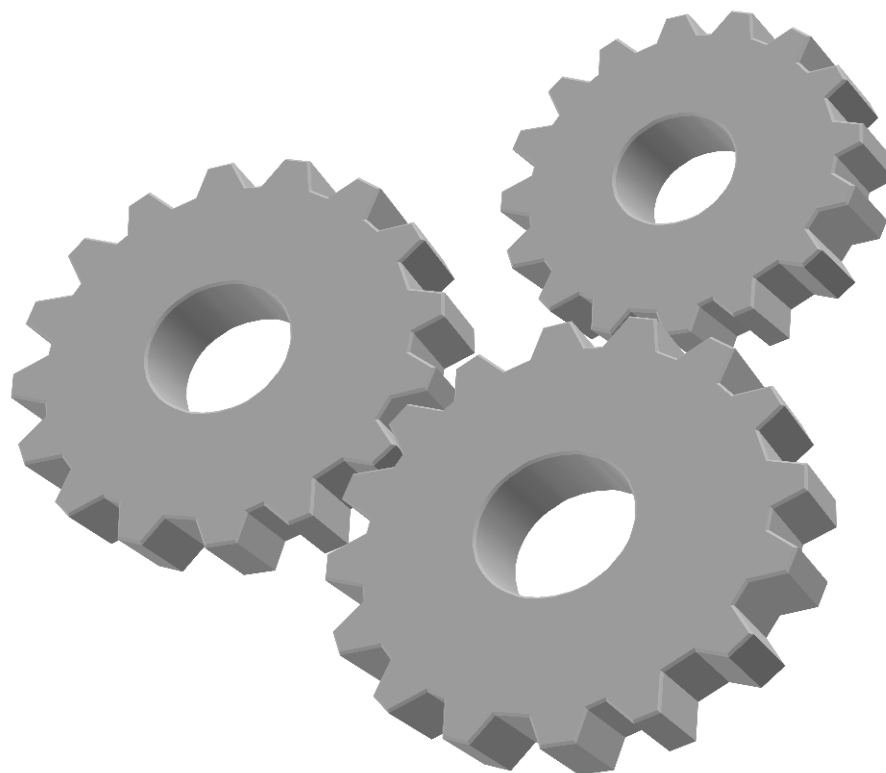
Markets within 50 Miles

Fresh Food from
Local Farms

Clean Water
from the
Octoraro



Changing Gears!



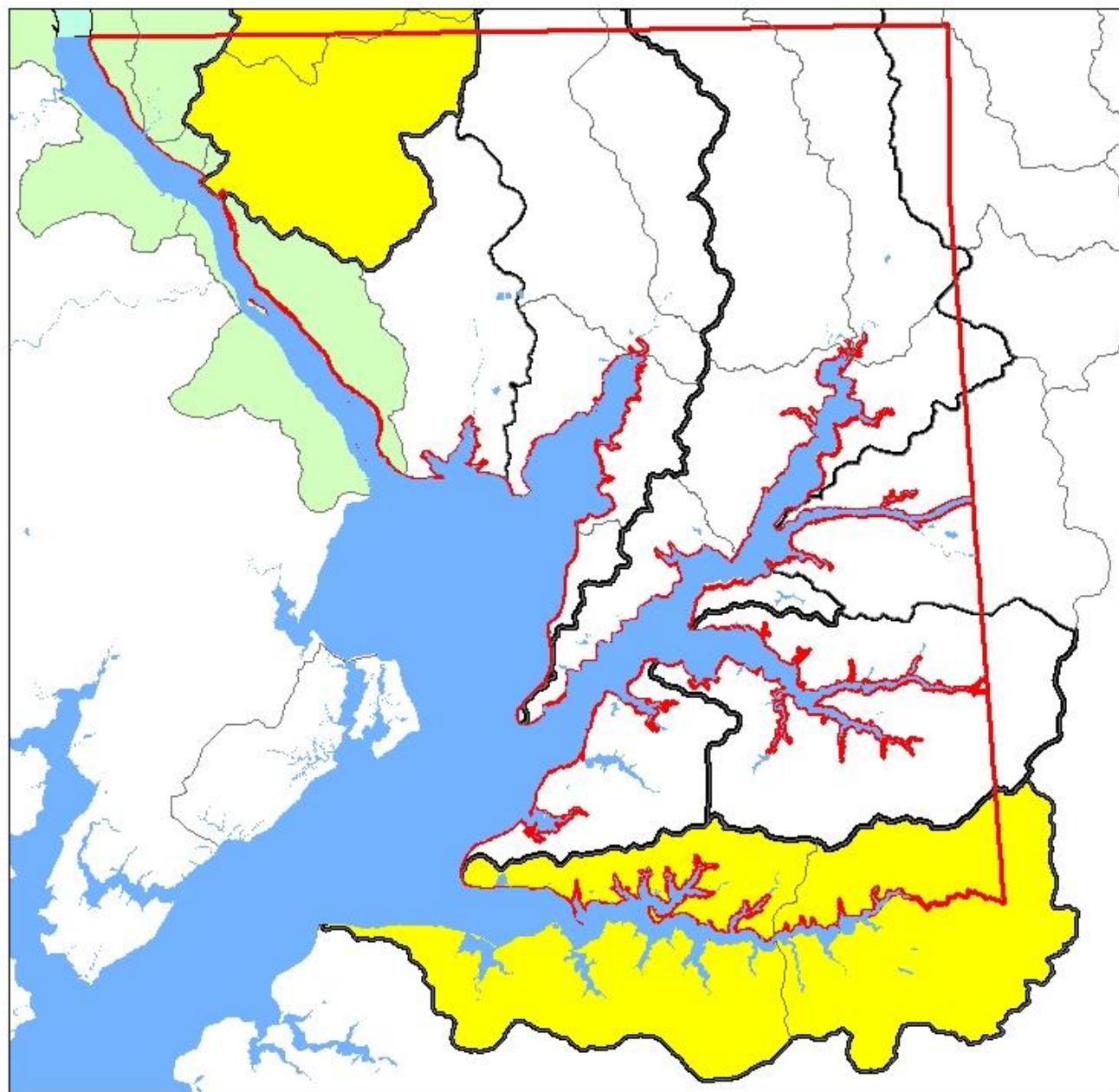
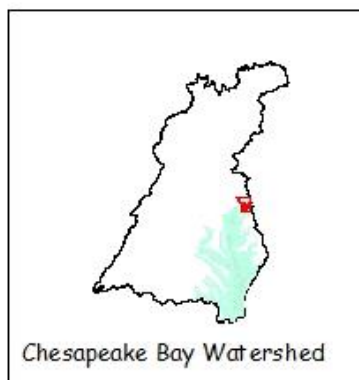
Cecil County Watersheds



Legend

TNMID

-  Elk River
-  Octoraro Creek
-  Lower Susquehanna River
-  Bohemia River
-  Back Creek CandD Canal
-  Christina River
-  North East River
-  Sassafras River
-  Mill Creek Furnace Bay



0 2 4 8 12 16 Miles

Cecil County Watersheds



March
2014

Help Close the Watershed Org. Gap!

For more info
contact

Aaron Harding

aharding@ccgov.org

Sophie Foscue

Sassafras River Association

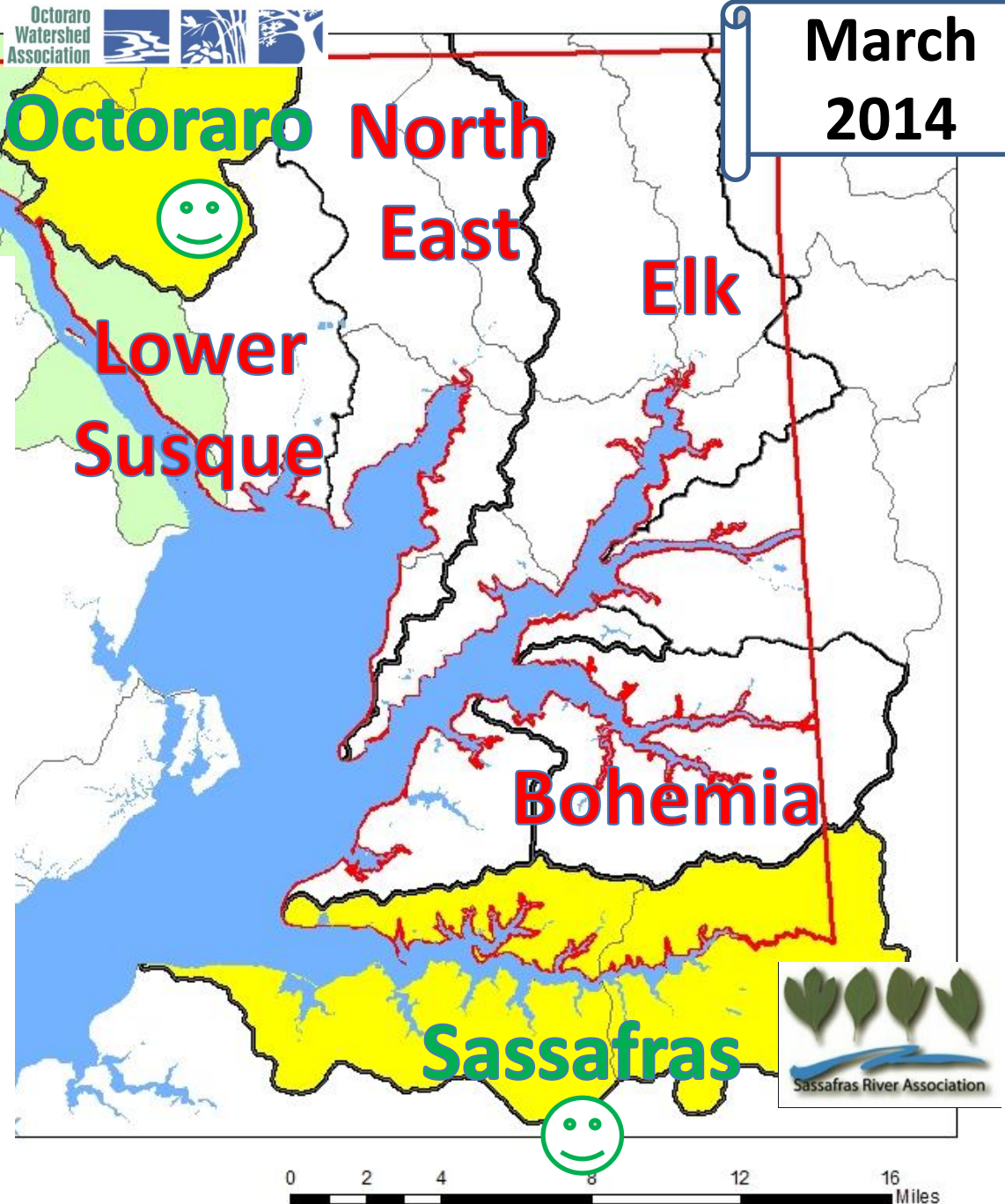
sfoscue@sassafrasriver.org

or

Rupert Rossetti

Octoraro Watershed Association

rupertossetti@aol.com



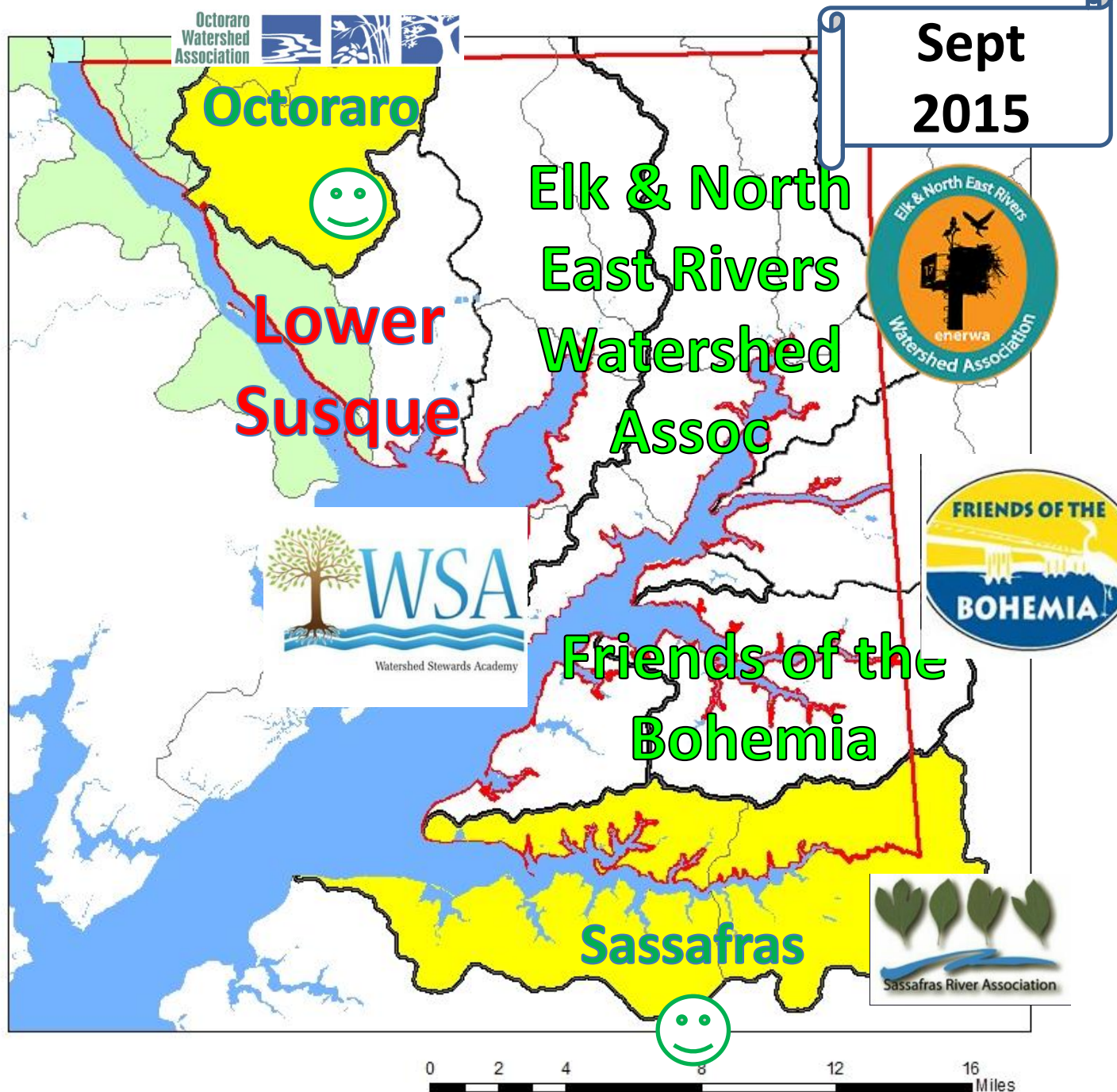
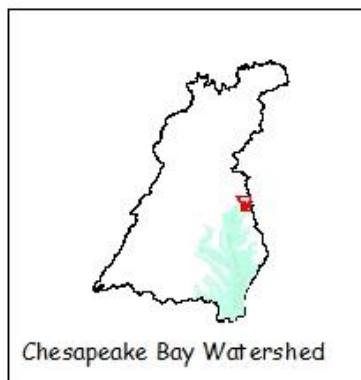
Cecil County Watersheds



Legend

TNMID

-  Elk River
-  Octoraro Creek
-  Lower Susquehanna River
-  Bohemia River
-  Back Creek CandD Canal
-  Christina River
-  North East River
-  Sassafras River
-  Mill Creek Furnace Bay



Cecil County WSA





Cecil County Watershed Stewards Academy

- Sponsored and Run by Cecil County government, supported by U of MD Sea Grant Extension
- MD Eastern Shore Pilot county
 - Classes September 2014 through March 2015
 - Class Project- Installed downspouts and rain barrels installed on pavilion. Installed Micro-Bioretenention Facility treating runoff from parking area
 - Currently 5 separate capstone projects underway
 - 9 students anticipated to graduate December 2015
- Second WSA class begins October 14



History and Successes Over 48 Years,

but there is

Work Yet to be Done, as We Continue Our Mission:

Why do we help the land?

When we farm, we work the land. The land helps us by giving us the things we need to live. Do you know some of the things the land gives us?

- ⇒ **Trees** for shade and wood
- ⇒ **Plants** for food and medicine
- ⇒ **Water** for drinking and washing
- ⇒ **Animals** for food and friendship

When we farm, we want to do things that help the land, not hurt it. That way the land will keep giving us the things we need to live.



Keeping Your Cattle Out Of The Stream

You may see that cows like to go into the stream on your farm. Its best to try to keep them out. Do you know why?

- ⇒ When the cows walk on the bank of the stream, they push lots of mud into the water and make it dirty.
- ⇒ The cows trample the plants near the stream. Plants are important for keeping the soil out of the stream with their roots.
- ⇒ The cows put manure in the stream. The fish don't like that!
- ⇒ The edge of the stream is slippery. The cows sometimes fall and hurt themselves.

The best way to keep the cows out of the stream is to put up a fence. Don't worry—the cows can get water from barrels that you put out for them.



Funding provided by The Lancaster
County Community Foundation, and
The National Fish and Wildlife

*Better ways to save our soil,
and our land.*



To restore and protect the natural resources of the scenic Octoraro Creek, and to preserve and protect its farmlands, forest, and rural heritage through education, outreach, restoration and community stewardship.



Upper Western Shore Tributary Basin

**One last thought!
Is there a continuing role for
the Trib Teams?
Should there be?
If not, what takes their
place?**

Legend

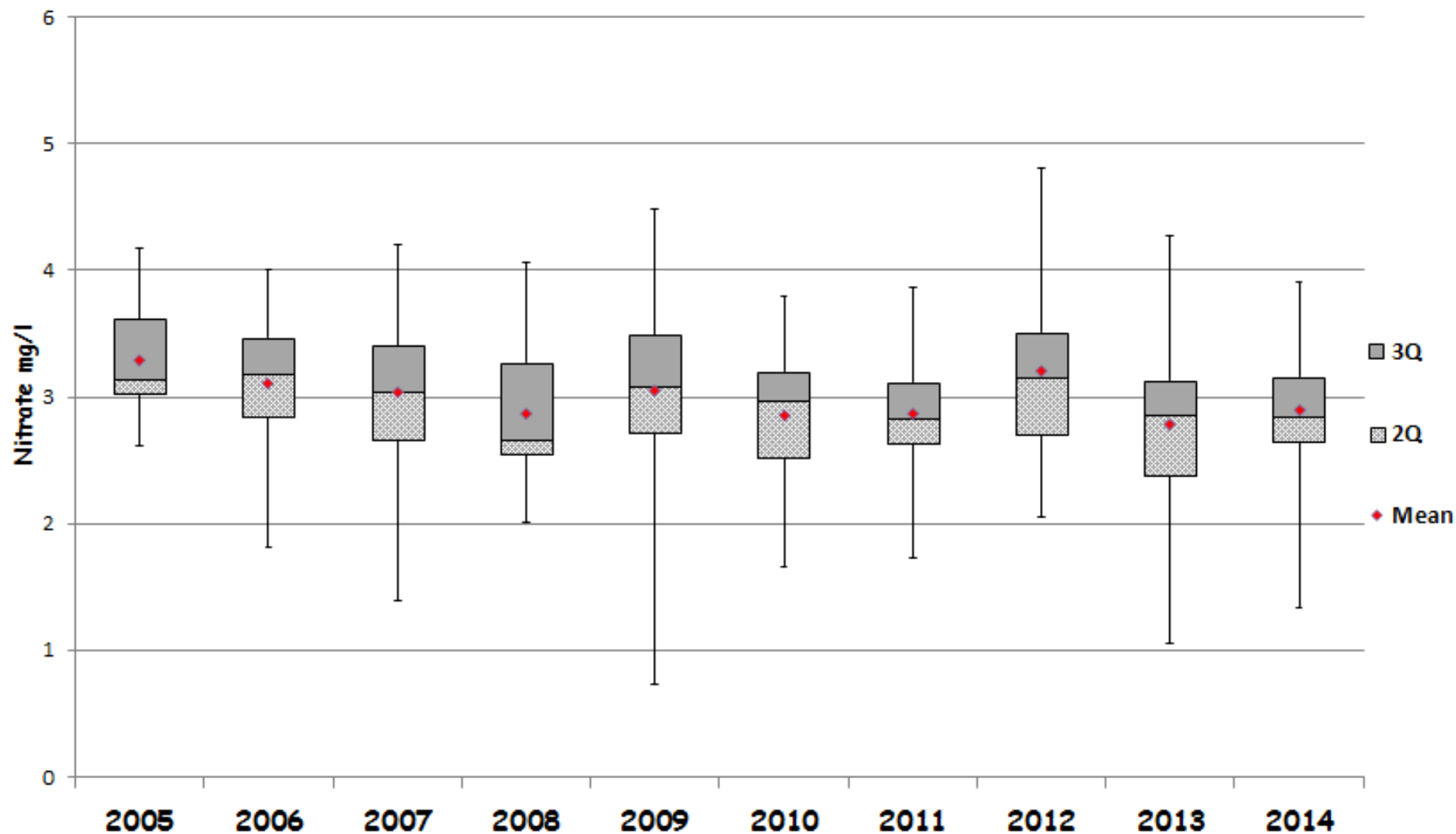
- Streams
- Municipalities

0 1.5 3 6 9 12 Miles



Basin Run Nitrate Data
June 2005 - Dec 2014

Chart Area



Octoraro Mainstem at Richardsmere Nitrate Data
Jan 2006 - Sept 2014

