

# New Land Cover and Land Use Data for Counties in the Chesapeake Bay Watershed

Peter Claggett, U.S. Geological Survey  
Cassandra Pallai, Chesapeake Conservancy

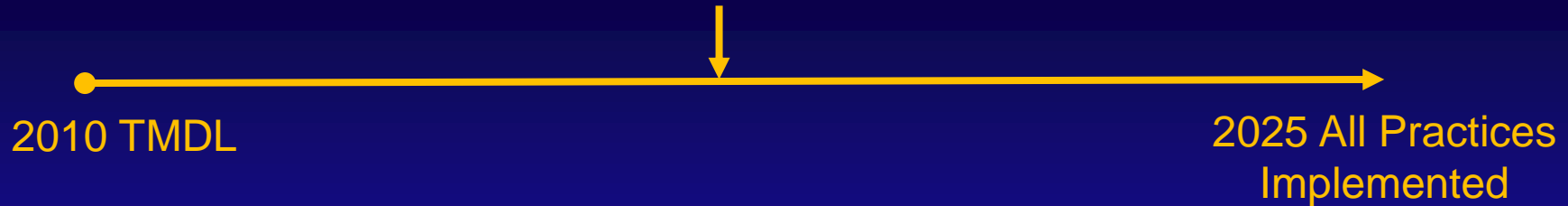
January 29, 2016 (re-recorded February 22, 2016)

Webinar: <http://www.chesapeakebay.net/calendar/event/23454/>

# Presentation Outline

1. Overview and Background
2. Production of High-resolution Land Cover Data
3. Production of 10m-resolution Land Use Data
4. Local Review of Phase 6 Land Use Data
5. Q & A.

# Chesapeake Bay 2017 Mid-Point Assessment



Goal: Determine whether the implementation the CBP Partnership's restoration strategies by 2025 will achieve water quality standards in the Bay.

Objective: Make this determination based on the best available science data, tools, BMPs, and lessons-learned.

**#1 Priority: improve accuracy of land use/cover data.**

Best available data = county & municipal level land use, land cover, parcels, sewer service areas, zoning, and other relevant information.

## Local land use and parcel data



- Low-density Residential
- Recreation
- Agriculture
- Roads

## High-resolution land cover data



- Impervious surfaces
- Tree canopy
- Low vegetation
- Water

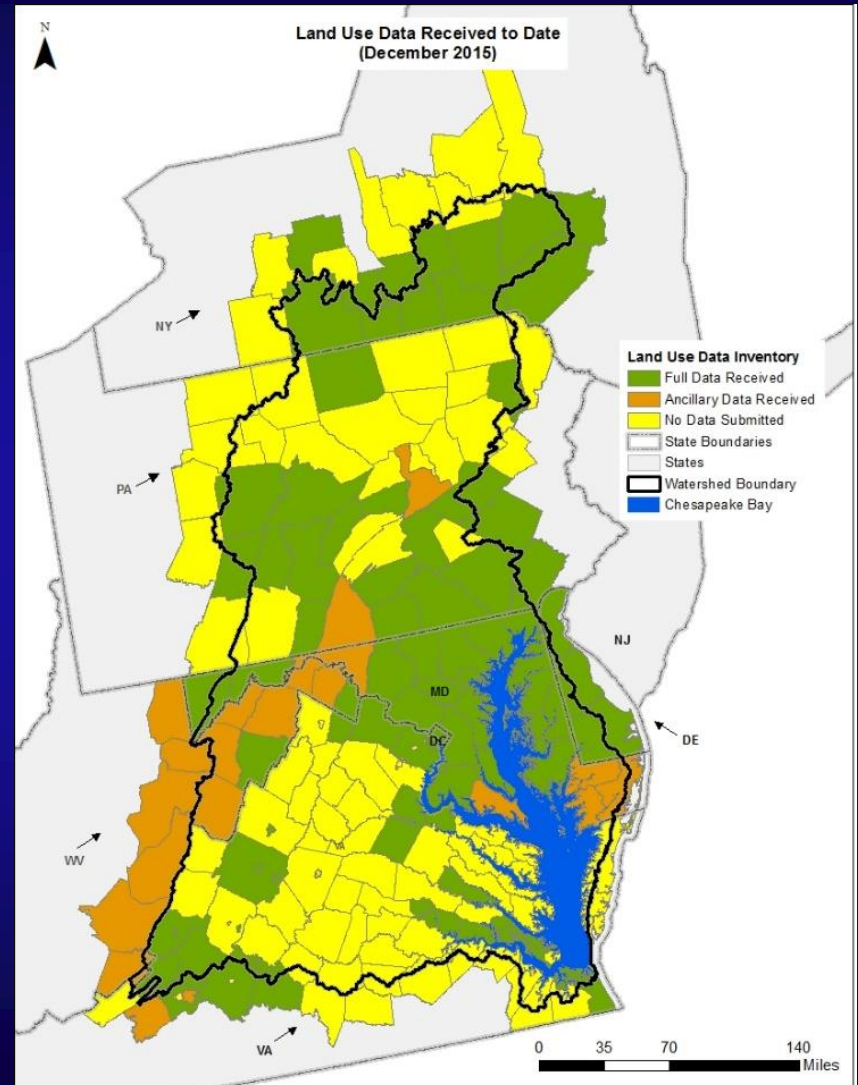
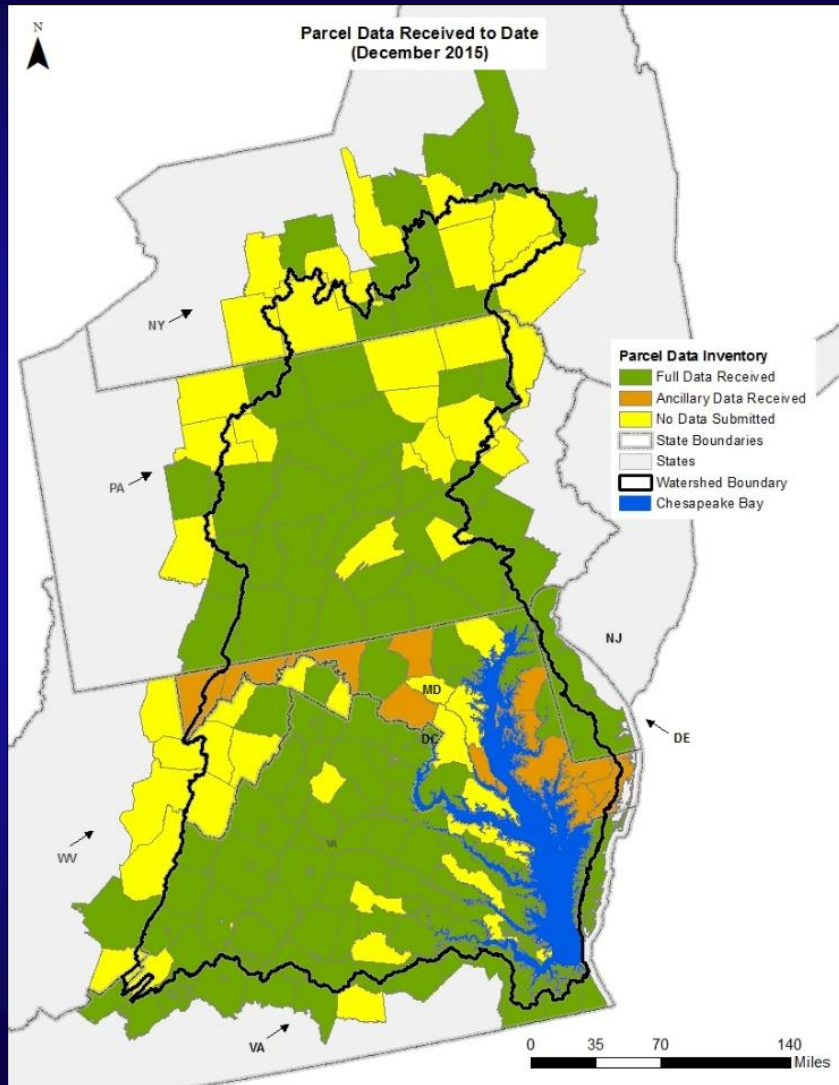


### Phase 6 Land Uses

- Impervious-Roads
- Forests
- Turf Grass
- Open Space



# Local Parcel and Land Use Data Collected by CBP

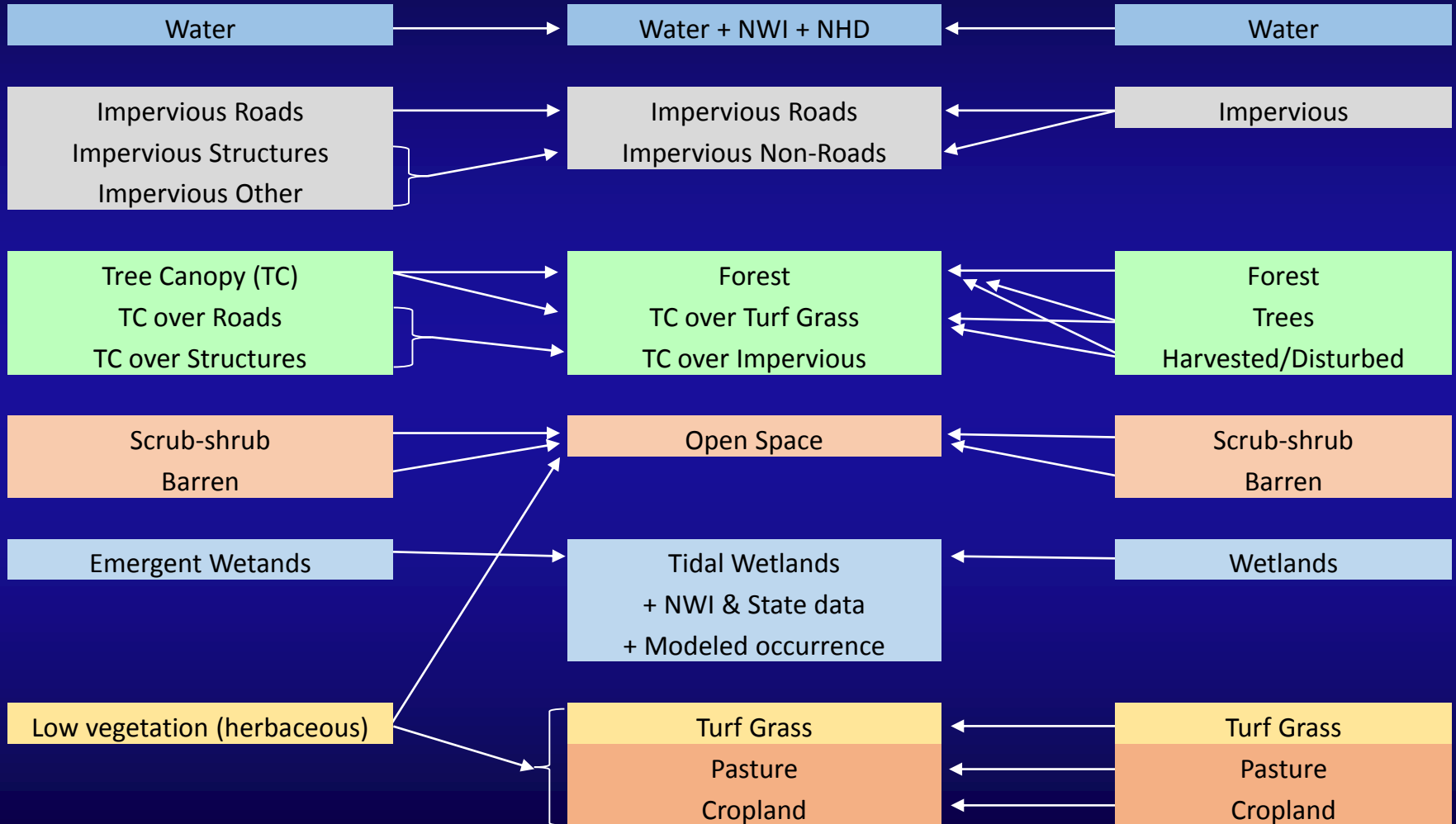


# Land Cover to Land Use Crosswalk

## Chesapeake Conservancy/ UVM

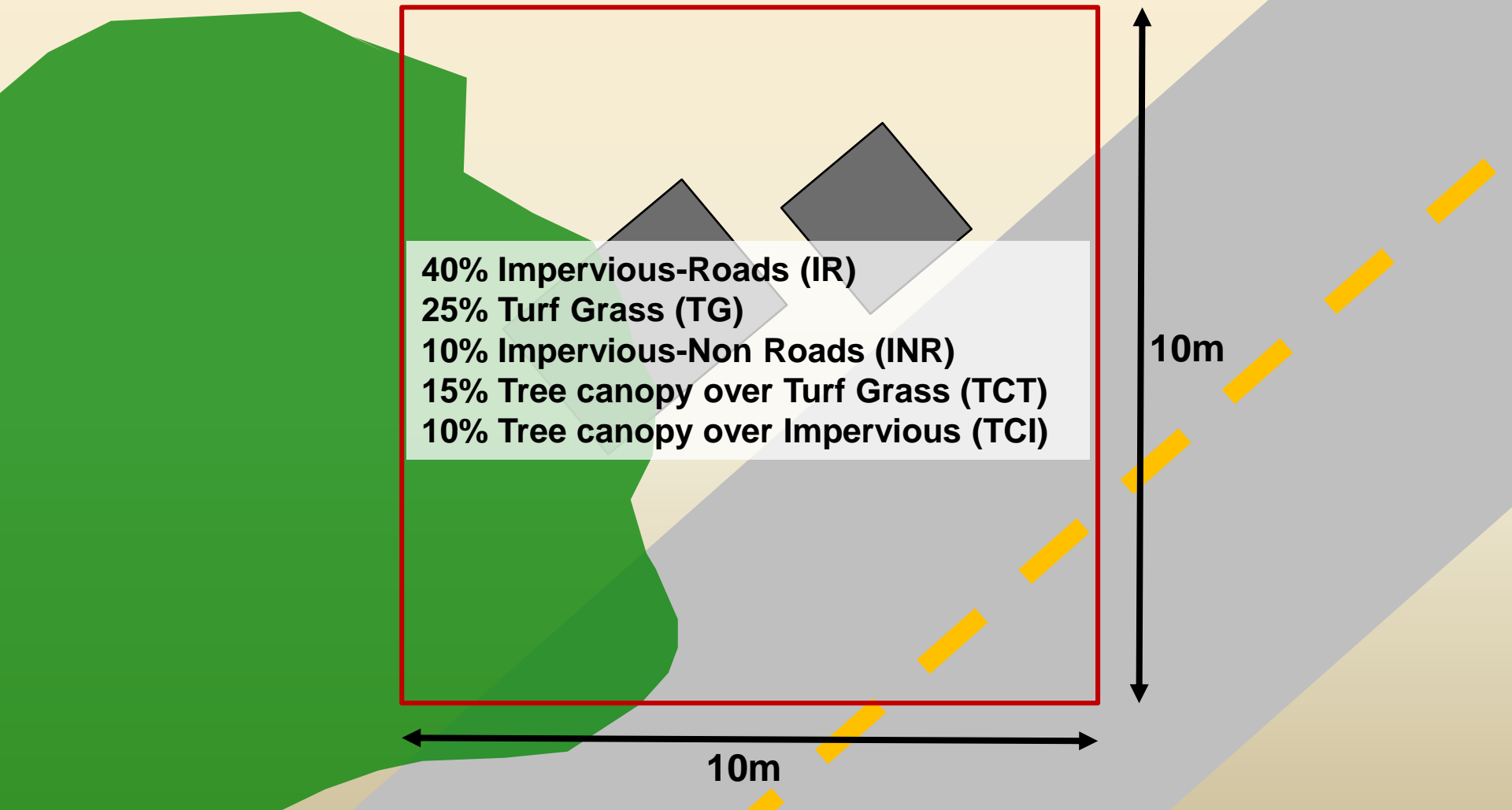
## Phase 6 CBP

## Worldview Solutions Inc.



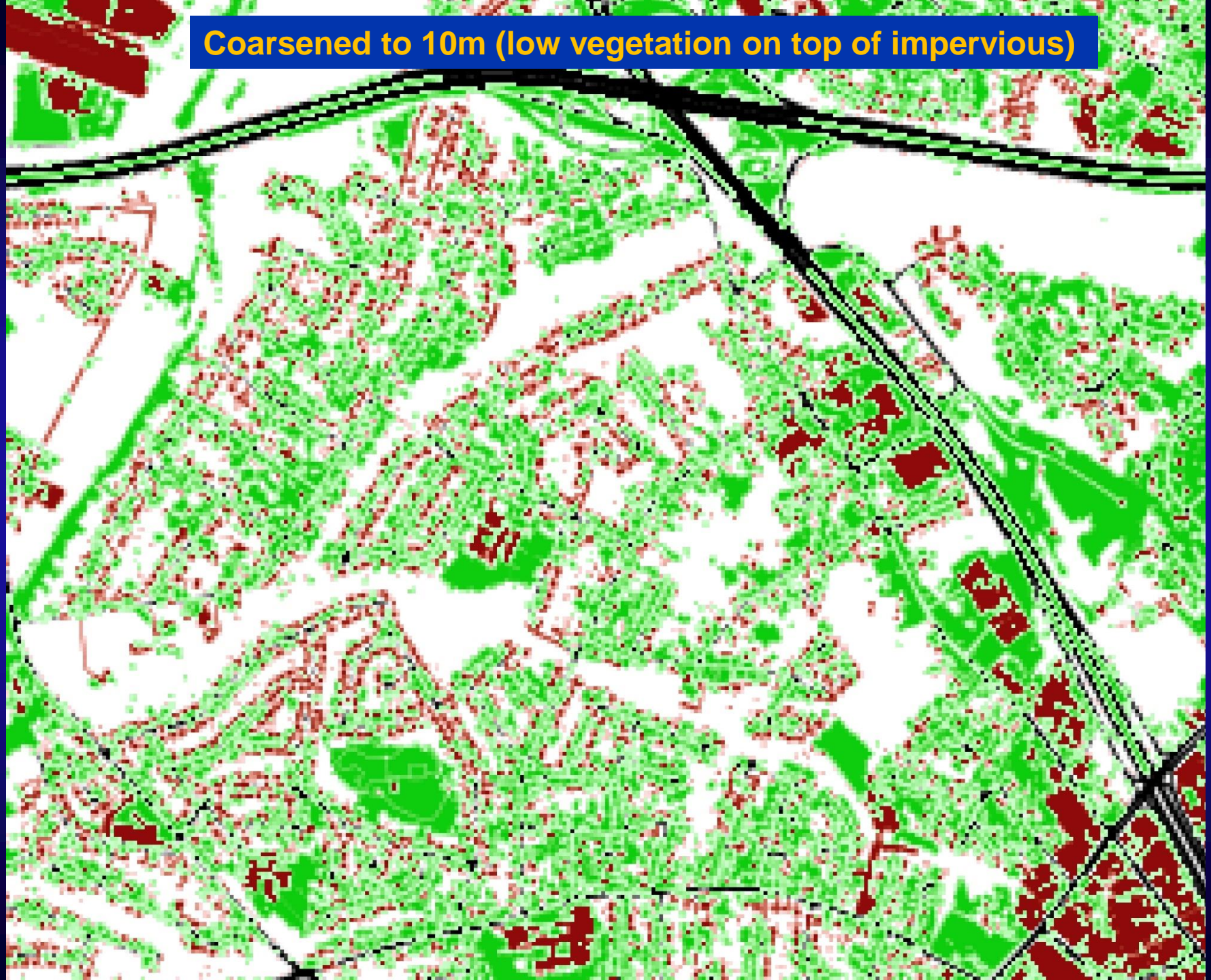
# Phase 6 Land Use Database – from local & high-res data

- Thirteen different 10m resolution raster datasets
- Each cell includes the fractional composition of all land uses.





Coarsened to 10m (low vegetation on top of impervious)



# P6 Developed Land Uses

**Impervious Roads:** paved and unpaved roads and bridges.

**Impervious Non-Roads:** buildings, driveways, sidewalks, parking lots, runways, and some private roads.

**Tree Canopy over Impervious:** trees overhanging impervious surfaces.

**Tree Canopy over Turf Grass:** trees overhanging low vegetation within 30' to 80' of impervious non-roads.

**Turf Grass:** low vegetation within developed\* areas that are potentially fertilized and assumed to have partially compacted soils with a shallow organic layer.

## P6 Developed Areas- defined

### With local data:

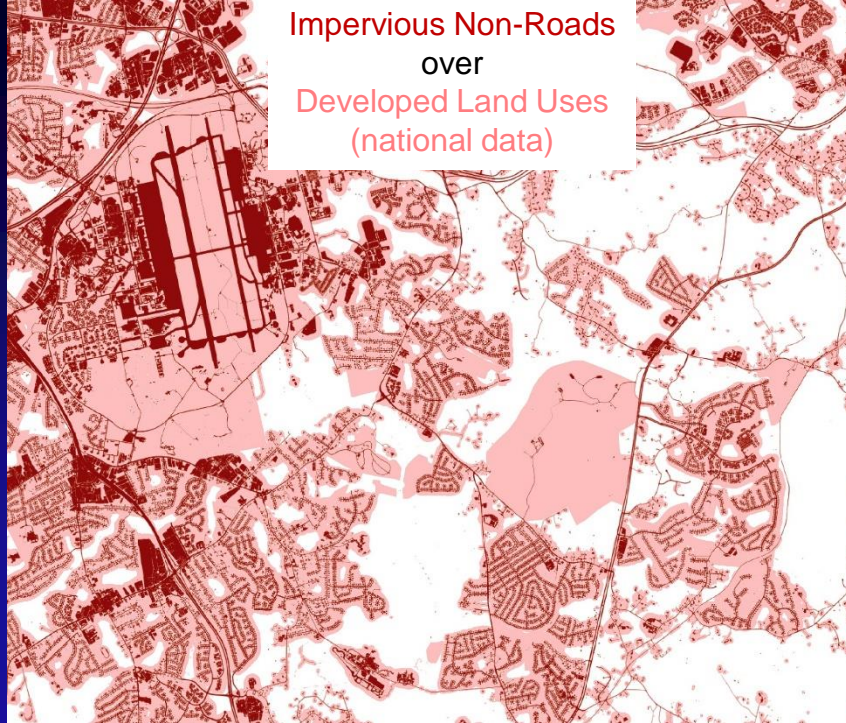
- Land Use: residential, commercial, industrial, recreational, institutional and other urban uses.
- Parcels:  $\leq 5$  acres with over 100-ft<sup>2</sup> of non-road impervious surfaces.

### With national data:

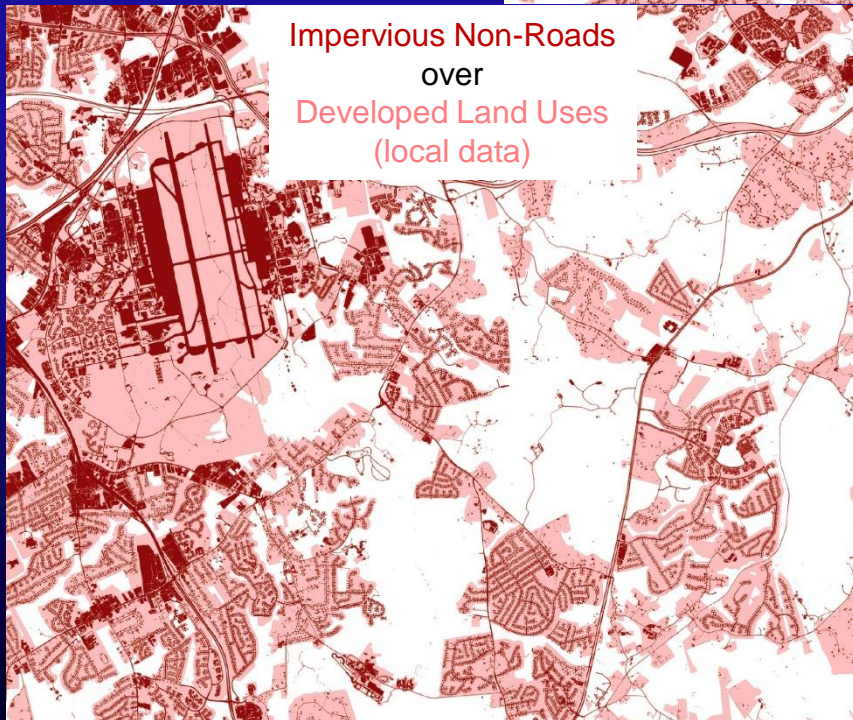
- Census Blocks: average housing density  $\geq 0.2$  dwelling units per acre (e.g., less than 5-acre lots).
- Institutional and recreational areas (Falcone, 2015)



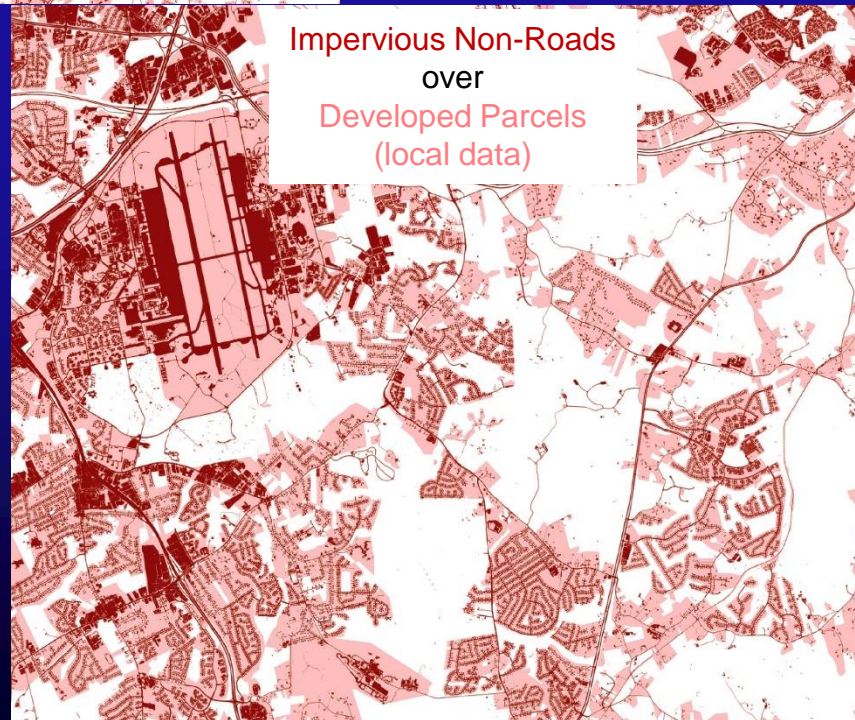
Impervious Non-Roads  
over  
Developed Land Uses  
(national data)



Impervious Non-Roads  
over  
Developed Land Uses  
(local data)



Impervious Non-Roads  
over  
Developed Parcels  
(local data)



## P6 Natural Land Uses

**Forest:** trees farther than 30' to 80' from impervious non-roads.

**Wetlands:** Areas mapped as wetlands in the National Wetlands Inventory (NWI), state wetland datasets, or areas modeled as wetlands based on soils, vegetation, and topography.

**Open Space:** barren, scrub-shrub, and low vegetation that is not turf grass or agriculture (e.g., beaches, vacant lots, transmission line right-of-ways, junkyards, fairgrounds, etc.).

**Water:** All waterbodies mapped in the National Hydrography Dataset (NHD-H, 1:24K scale), NWI water features, and high-resolution land cover as “water”. All single-line NHD-H streams assumed to be 15' wide.



# P6 Agricultural Land Uses

**Agriculture (maximum potential area):** low-vegetation lands outside developed areas that are not explicitly mapped as open space.

**Potential cropland:** low-vegetation lands outside developed areas that were classed as cropland at least once from 2008 – 2015 (annual NASS Cropland Data Layers).

**Potential pasture/Hay:** low-vegetation lands outside developed areas that were classed as pasture/hay at least once from 2008 – 2015 (annual NASS Cropland Data Layers).

**Note:** The above classes are used for distributing 18 different agricultural land uses reported in the Census of Agriculture from the county scale to sub-county watersheds. If fewer total agricultural acres are reported in the Census of Agriculture than are mapped, the remainder are considered to be “open space”. If more acres are reported than mapped, the mapped data will take precedent.

# Transitioning from Land Cover to P6 Land Use (DC, DE, MD, PA, NY, and WV)

## Tree Canopy + GIS Analysis =

- Forest
- Tree Canopy over Turf Grass

## Low Vegetation + Local Land Use =

- Turf Grass
- Open Space
- Potential Agriculture
  - + NASS Cropland Data Layers =
    - Cropland (potential)
    - Pasture/Hay (potential)

# Transitioning from Land Cover to P6 Land Use (DC, DE, MD, PA, NY, VA, and WV)

**Water + NHD + NWI =**

- Water

**NWI + State Wetland Datasets + Modeled Wetlands +  
Floodplains =**

- Floodplain wetlands
- Other wetlands

# Transitioning from Land Cover to P6 Land Use (VA only)

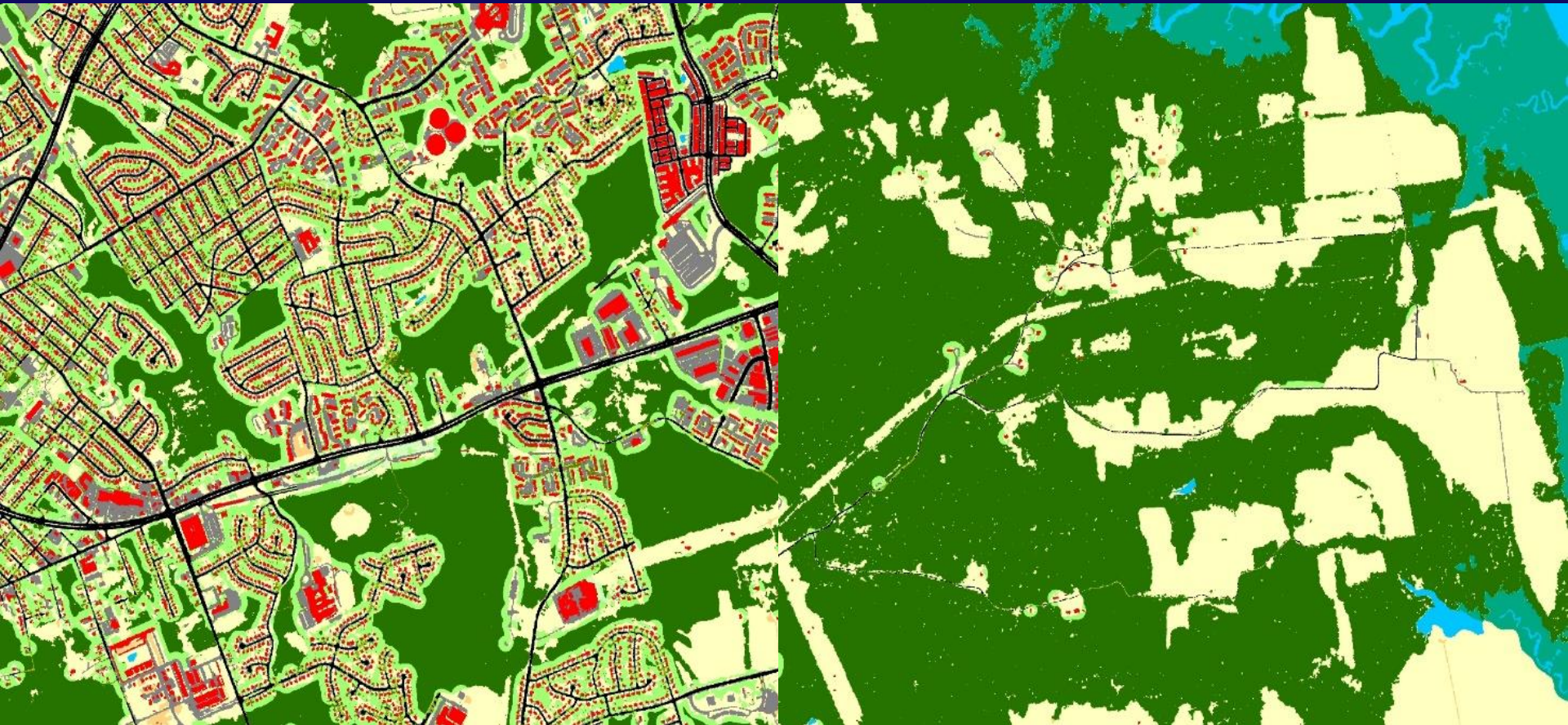
## **Impervious + Roads =**

- Impervious Roads
- Impervious Non-roads

## **Forest + Trees + Harvested Forest + Tree Canopy derived from leaf-on imagery + Impervious + GIS Analysis =**

- Forest
- Tree Canopy over Turf
- Tree Canopy over Impervious

# Forest vs Tree Canopy over Turf



Urban Area

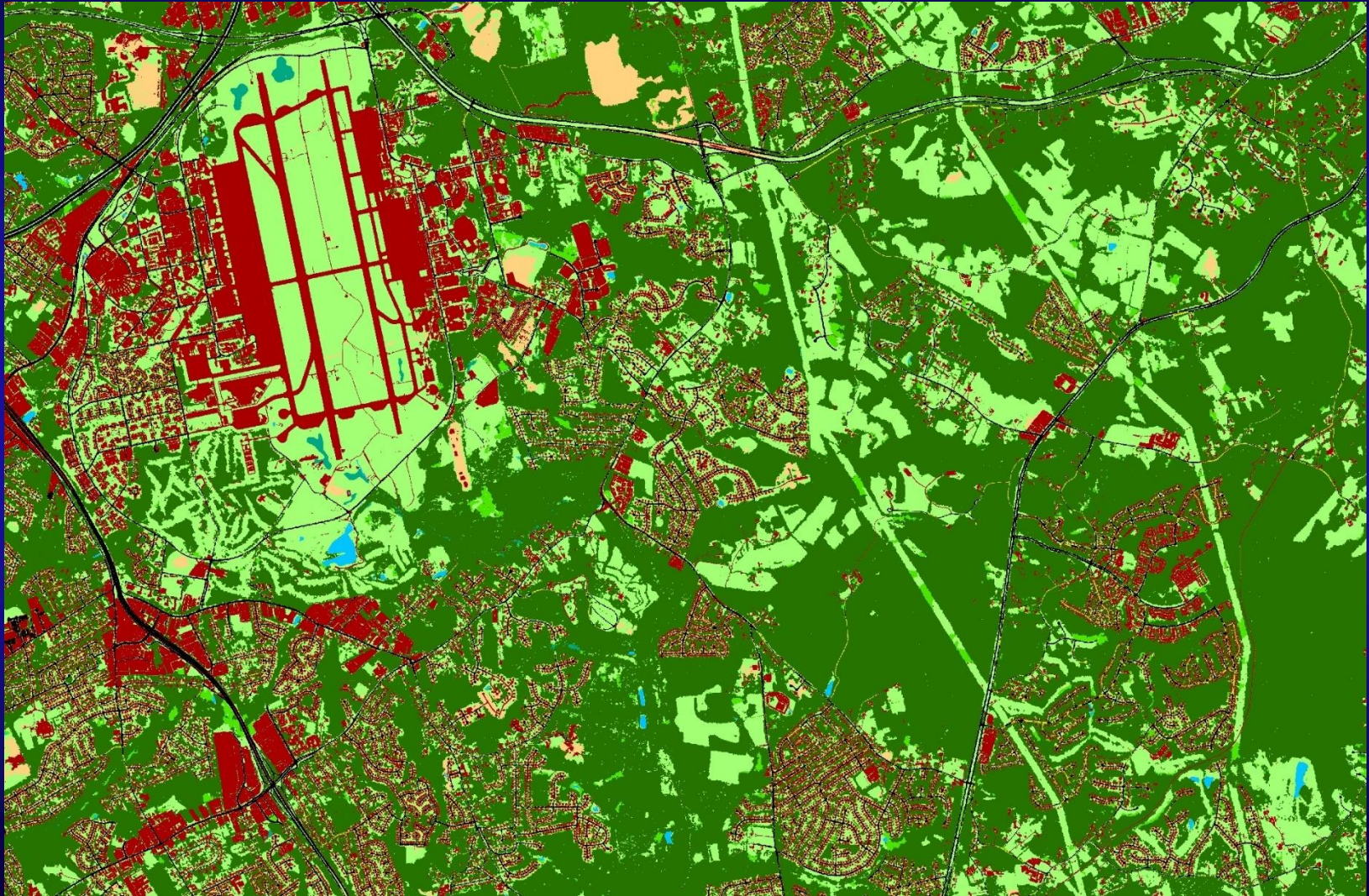
Rural Area

Forest

Tree Canopy over Turf

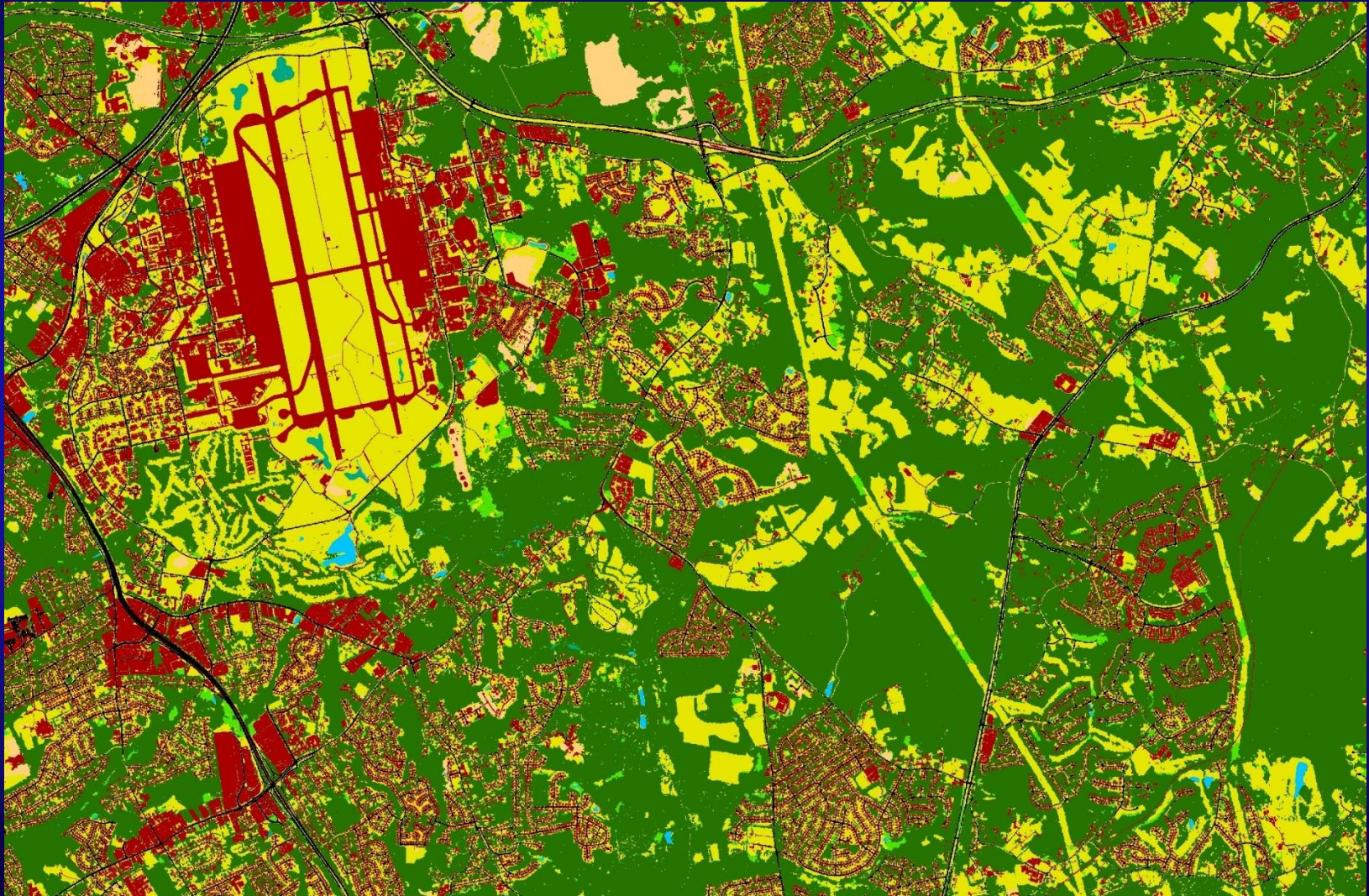


# Turf Grass vs Agriculture (land cover)



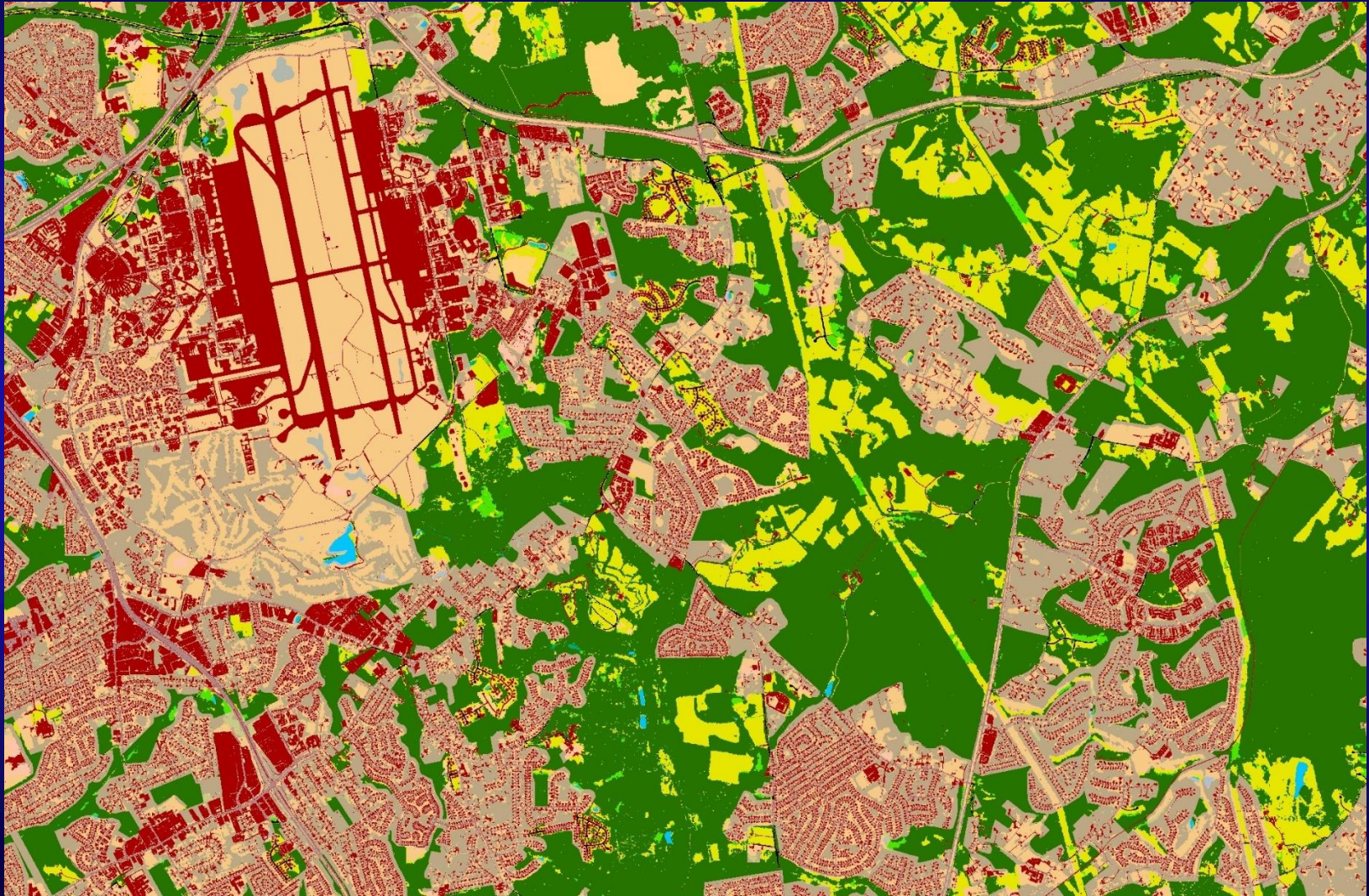


# Turf Grass vs Agriculture (low vegetation)



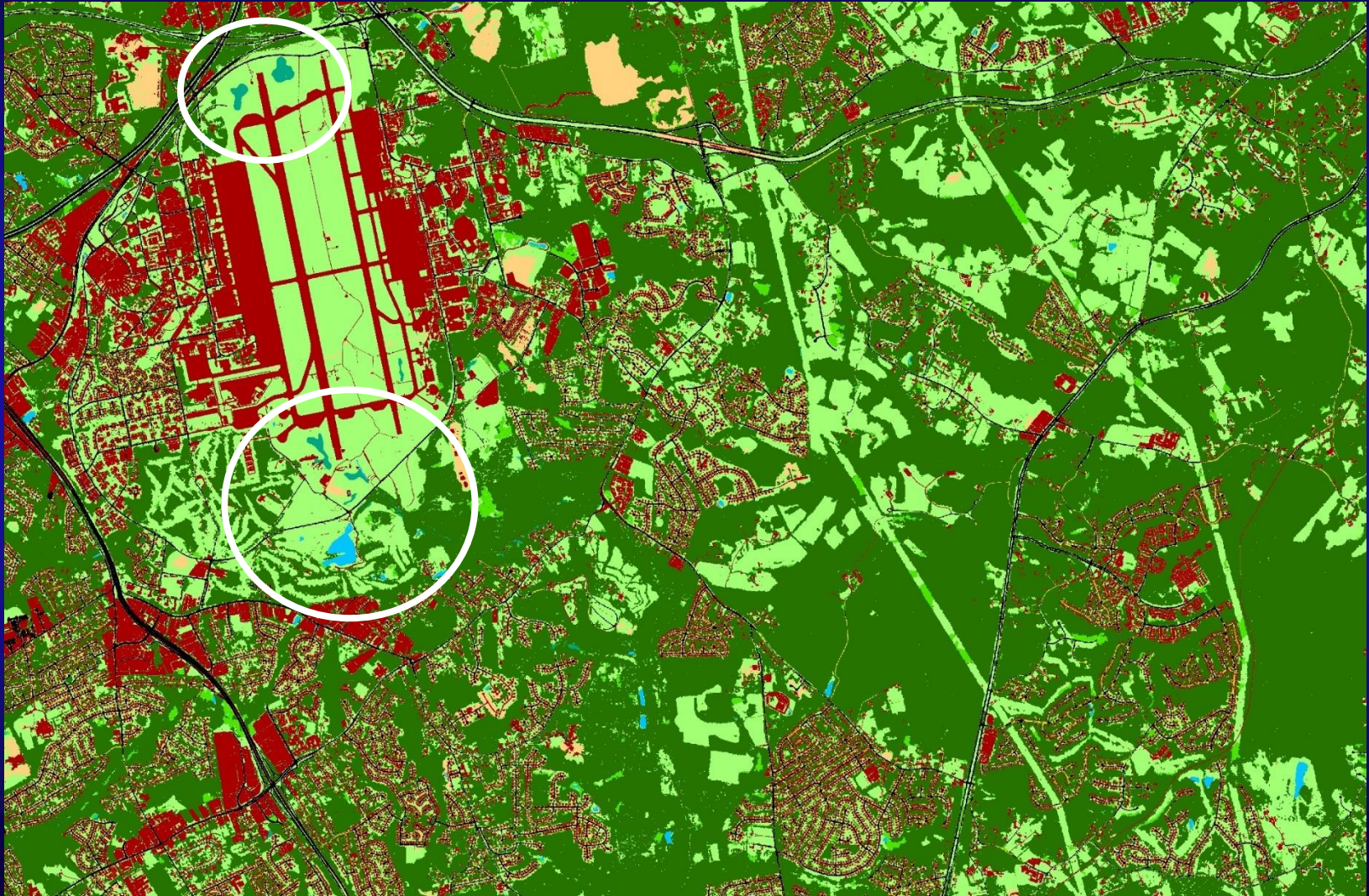


# Turf Grass vs Agriculture (developed land use overlay)



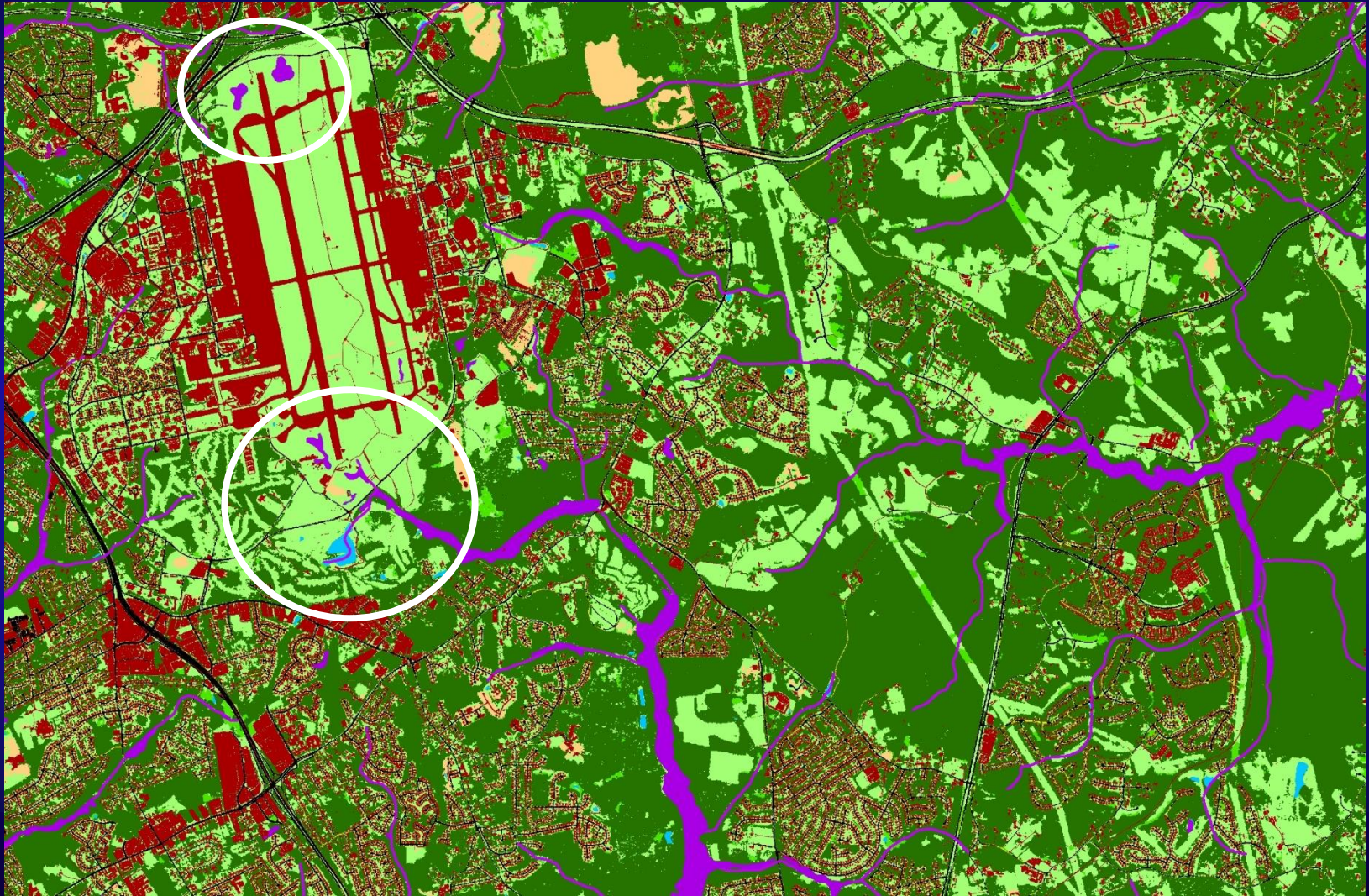


# Water and Wetlands (mapped from land cover)



































# Water and Wetlands (added from NHD and NWI)



# Phase 6 Land Use Database: Completion Dates

End Final	16-Mar	16-Apr	16-May	16-Jun	16-Jul	16-Aug	%/State
DC	 100.0%	0.0%	0.0%	0.0%	0.0%	0.0%	 100.0%
DE	 100.0%	0.0%	0.0%	0.0%	0.0%	0.0%	 100.0%
MD	 29.2%	 25.0%	 16.7%	 20.8%	 4.2%	 4.2%	 100.0%
NY	0.0%	 20.0%	 50.0%	 30.0%	0.0%	0.0%	 100.0%
PA	0.0%	 44.2%	 23.3%	 25.6%	 7.0%	0.0%	 100.0%
VA	0.0%	 12.7%	 19.6%	 6.9%	 56.9%	 3.9%	 100.0%
WV	0.0%	0.0%	 7.1%	 57.1%	 35.7%	0.0%	 100.0%

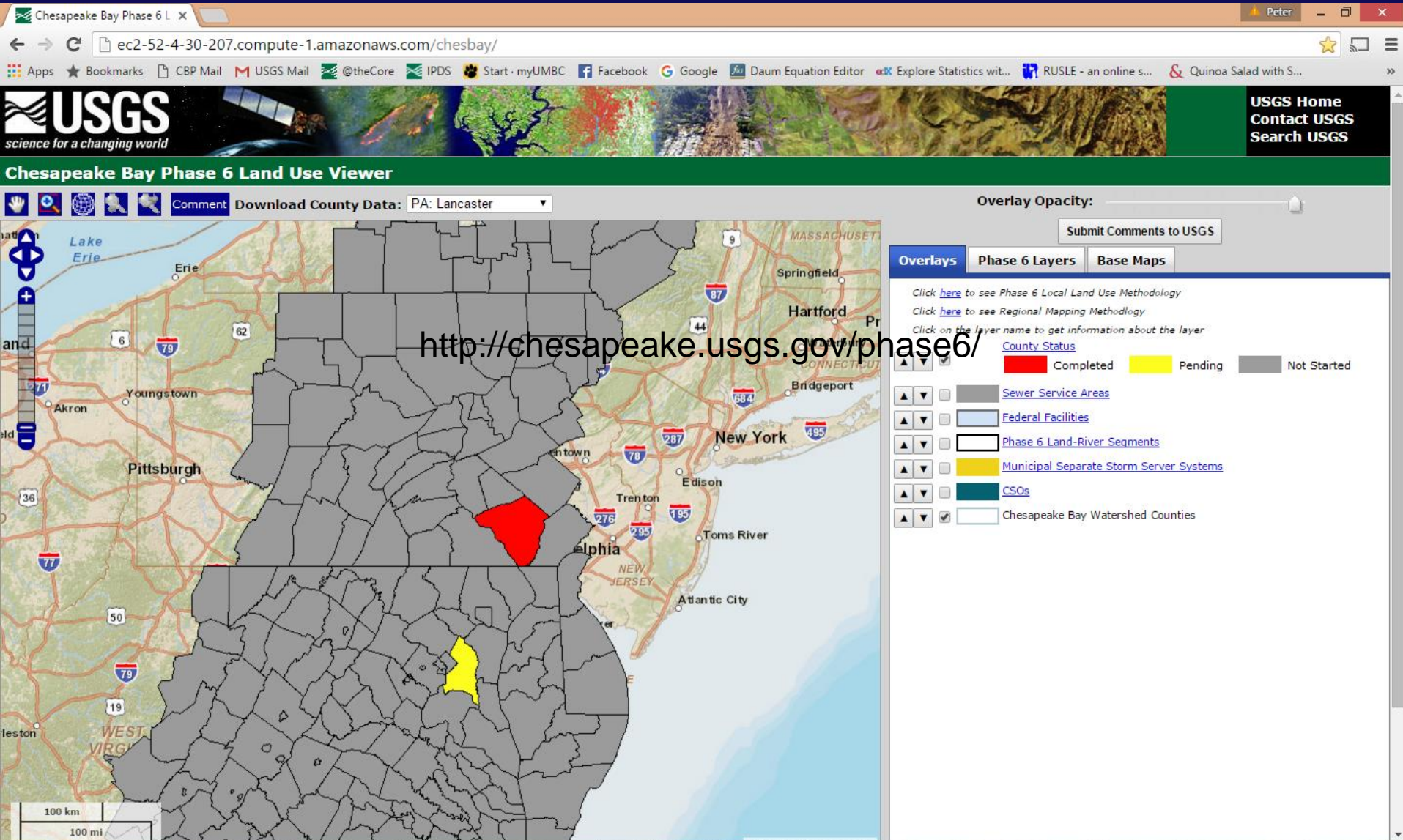


# Phase 6 Land Use Database: Local Review Start Dates

FIPS	ST	CNTYNAME	Vendor	LandCover Review Start	LandUse Review Start	LandUse_Final
51111	VA	LUNENBURG	WSI	n/a	3/16/2016	4/20/2016
51113	VA	MADISON	WSI	n/a	3/18/2016	4/22/2016
51683	VA	MANASSAS	WSI	n/a	3/21/2016	4/25/2016
51685	VA	MANASSAS PARK	WSI	n/a	3/23/2016	4/27/2016
51125	VA	NELSON	WSI	n/a	3/25/2016	4/29/2016
51135	VA	NOTTOWAY	WSI	n/a	3/28/2016	5/2/2016
51137	VA	ORANGE	WSI	n/a	3/30/2016	5/4/2016
51145	VA	POWHATAN	WSI	n/a	4/1/2016	5/6/2016
51147	VA	PRINCE EDWARD	WSI	n/a	4/4/2016	5/9/2016
51153	VA	PRINCE WILLIAM	WSI	n/a	4/6/2016	5/11/2016
51157	VA	RAPPAHANNOCK	WSI	n/a	4/8/2016	5/13/2016
51177	VA	SPOTSYLVANIA	WSI	n/a	4/11/2016	5/16/2016
51179	VA	STAFFORD	WSI	n/a	4/13/2016	5/18/2016
24003	MD	ANNE ARUNDEL	CC	3/16/2016	4/15/2016	5/20/2016
24510	MD	BALTIMORE CTY	CC	3/19/2016	4/18/2016	5/23/2016
24023	MD	GARRETT	CC	3/21/2016	4/20/2016	5/25/2016
36003	NY	ALLEGANY	CC	3/23/2016	4/22/2016	5/27/2016

# Chesapeake Bay Phase 6 Land Use Viewer

<http://chesapeake.usgs.gov/phase6/>





# Chesapeake Bay Phase 6 Land Use Viewer

<http://chesapeake.usgs.gov/phase6/>

Chesapeake Bay Phase 6 L

ec2-52-4-30-207.compute-1.amazonaws.com/chesbay/

USGS science for a changing world

USGS Home Contact USGS Search USGS

### Chesapeake Bay Phase 6 Land Use Viewer

Download County Data: select...

Overlay Opacity: Submit Comments to USGS

**Overlays** Phase 6 Layers Base Maps

Click [here](#) to see Phase 6 Local Land Use Methodology  
Click [here](#) to see Regional Mapping Methodology  
Click on the layer name to get information about the layer

**County Status**

- ☒ Completed
- ☐ Pending
- ☐ Not Started

☒ [Sewer Service Areas](#)

☒ [Federal Facilities](#)

☒ [Phase 6 Landowner Segments](#)

☐ [Municipal Separate Storm Server Systems](#)

☐ [CSOs](#)

☒ Chesapeake Bay Watershed Counties



# Chesapeake Bay Phase 6 Land Use Viewer

<http://chesapeake.usgs.gov/phase6/>

Chesapeake Bay Phase 6 L

ec2-52-4-30-207.compute-1.amazonaws.com/chesbay/

Apps ★ Bookmarks CBP Mail USGS Mail @theCore IPDS Start · myUMBC Facebook Google Daum Equation Editor Explore Statistics wit... RUSLE - an online s... Quinoa Salad with S...

**USGS**  
science for a changing world

**USGS Home**  
Contact USGS  
Search USGS


**Chesapeake Bay Phase 6 Land Use Viewer**

Download County Data: select...

Overlay Opacity: Submit Comments to USGS

**Overlays** **Phase 6 Layers** **Base Maps**

- ☐ None
- ☒ ESRI Topo
- ☐ ESRI Imagery
- ☐ ESRI Street Map



100 km  
100 mi

73 71621 41 4420

3:33 PM



# Chesapeake Bay Phase 6 Land Use Viewer

<http://chesapeake.usgs.gov/phase6/>

Chesapeake Bay Phase 6 L X

ec2-52-4-30-207.compute-1.amazonaws.com/chesbay/

Apps ★ Bookmarks CBP Mail USGS Mail @theCore IPDS Start - myUMBC Facebook Google Daum Equation Editor Explore Statistics wit... RUSLE - an online s... Quinoa Salad with S...

**USGS**  
science for a changing world

**USGS Home**  
**Contact USGS**  
**Search USGS**

**Chesapeake Bay Phase 6 Land Use Viewer**

Download County Data: select...

Overlay Opacity:

Submit Comments to USGS

**Overlays** **Phase 6 Layers** **Base Maps**

- ☐ None
- ☐ ESRI Topo
- ☒ ESRI Imagery
- ☐ ESRI Street Map

100 km 100 mi



# Chesapeake Bay Phase 6 Land Use Viewer

<http://chesapeake.usgs.gov/phase6/>

Chesapeake Bay Phase 6 L X

ec2-52-4-30-207.compute-1.amazonaws.com/chesbay/

Apps ★ Bookmarks CBP Mail USGS Mail @theCore IPDS Start myUMBC Facebook Google Daum Equation Editor Explore Statistics wit... RUSLE - an online s... Quinoa Salad with S...

**USGS**  
science for a changing world

**USGS Home**  
Contact USGS  
Search USGS

**Chesapeake Bay Phase 6 Land Use Viewer**

Comment Download County Data: select...

Overlay Opacity: Submit Comments to USGS

Overlays **Phase 6 Layers** Base Maps

Click [here](#) to see Phase 6 Local Land Use Methodology  
Click [here](#) to see Regional Mapping Methodology  
Click on the layer name to get information about the layer

- ☒ Impervious Roads
- ☒ Impervious Non-Roads
- ☐ Tree Canopy Over Roads
- ☐ Tree Canopy Over Other Impervious
- ☐ Tree Canopy Over Turf Grass
- ☐ Tree Canopy Over Scrub/Shrub
- ☐ Turf Grass
- ☐ Open Space
- ☐ Forest
- ☐ Tidal Wetland
- ☐ Non-tidal Floodplain Wetland
- ☐ Non-tidal Other Wetland
- ☐ Open Water
- ☐ Cropland
- ☐ Pasture

20 km  
10 mi

75 41635 40 38092

ENG 3:37 PM



# Chesapeake Bay Phase 6 Land Use Viewer

<http://chesapeake.usgs.gov/phase6/>

Chesapeake Bay Phase 6 L

ec2-52-4-30-207.compute-1.amazonaws.com/chesbay/

USGS science for a changing world

USGS Home Contact USGS Search USGS

### Chesapeake Bay Phase 6 Land Use Viewer

Comment Download County Data: select...

Overlay Opacity: Submit Comments to USGS

Overlays Phase 6 Layers Base Maps

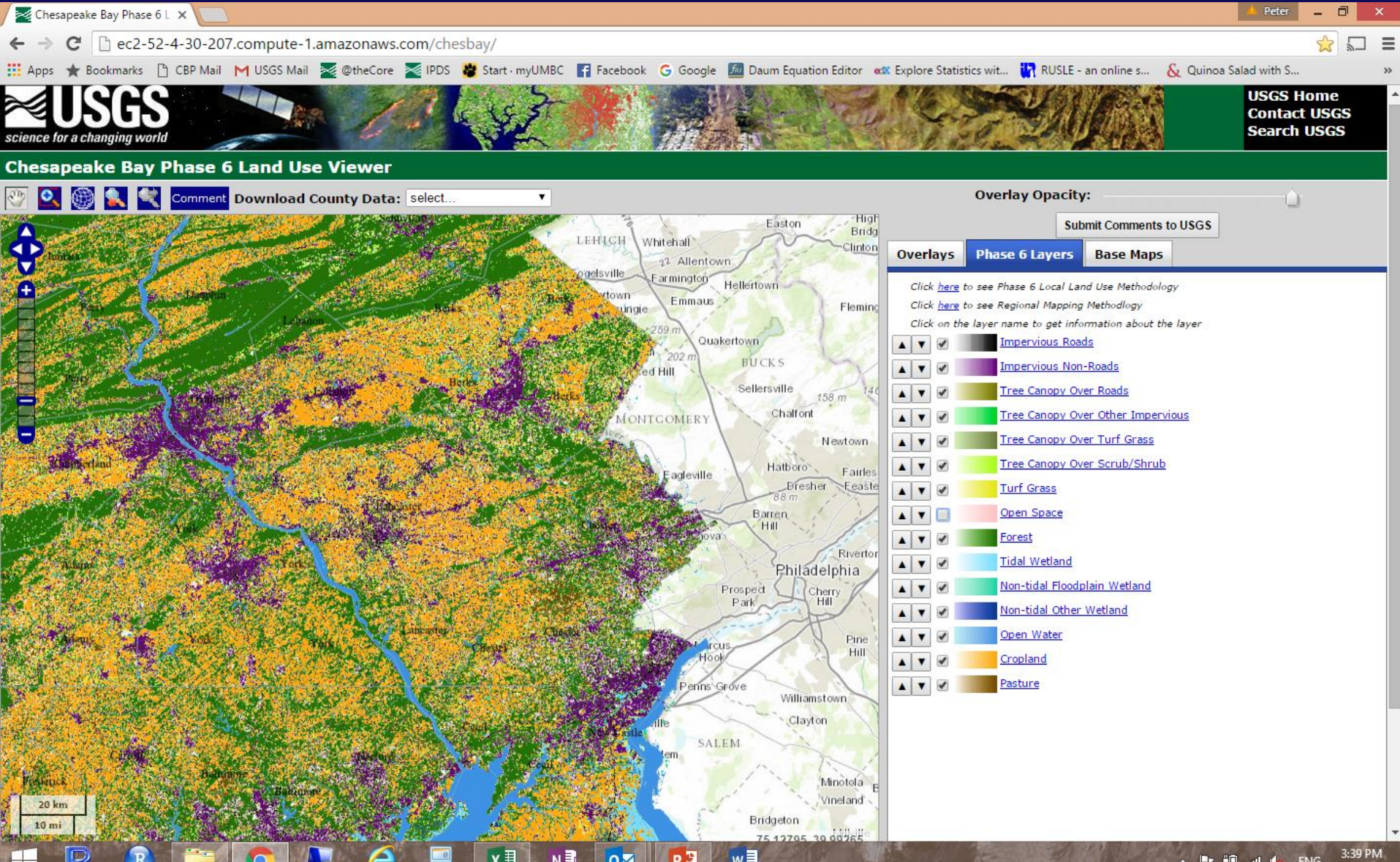
Click [here](#) to see Phase 6 Local Land Use Methodology  
Click [here](#) to see Regional Mapping Methodology  
Click on the layer name to get information about the layer

- ☐ Impervious Roads
- ☒ Impervious Non-Roads
- ☐ Tree Canopy Over Roads
- ☐ Tree Canopy Over Other Impervious
- ☐ Tree Canopy Over Turf Grass
- ☐ Tree Canopy Over Scrub/Shrub
- ☒ Turf Grass
- ☐ Open Space
- ☒ Forest
- ☐ Tidal Wetland
- ☐ Non-tidal Floodplain Wetland
- ☐ Non-tidal Other Wetland
- ☐ Open Water
- ☐ Cropland
- ☐ Pasture



# Chesapeake Bay Phase 6 Land Use Viewer

<http://chesapeake.usgs.gov/phase6/>





# Chesapeake Bay Phase 6 Land Use Viewer

<http://chesapeake.usgs.gov/phase6/>

Chesapeake Bay Phase 6 L x

ec2-52-4-30-207.compute-1.amazonaws.com/chesbay/

Apps ★ Bookmarks CBP Mail USGS Mail @theCore IPDS Start · myUMBC Facebook Google Daum Equation Editor Explore Statistics wit... RUSLE - an online s... Quinoa Salad with S...

**USGS**  
science for a changing world

**USGS Home**  
Contact USGS  
Search USGS

**Chesapeake Bay Phase 6 Land Use Viewer**

Download County Data: select...

Overlay Opacity:

Submit Comments to USGS

**Overlays** **Phase 6 Layers** **Base Maps**

Click [here](#) to see Phase 6 Local Land Use Methodology  
Click [here](#) to see Regional Mapping Methodology  
Click on the layer name to get information about the layer

- ☐ ☐ Impervious Roads
- ☐ ☐ Impervious Non-Roads
- ☐ ☐ Tree Canopy Over Roads
- ☐ ☐ Tree Canopy Over Other Impervious
- ☐ ☐ Tree Canopy Over Turf Grass
- ☐ ☐ Tree Canopy Over Scrub/Shrub
- ☐ ☐ Turf Grass
- ☐ ☐ Open Space
- ☐ ☐ Forest
- ☐ ☐ Tidal Wetland
- ☐ ☐ Non-tidal Floodplain Wetland
- ☐ ☐ Non-tidal Other Wetland
- ☐ ☐ Open Water
- ☐ ☐ Cropland
- ☐ ☐ Pasture

2 km  
2 mi

76.37037 -40.03200

ENG 3:41 PM



# Chesapeake Bay Phase 6 Land Use Viewer

<http://chesapeake.usgs.gov/phase6/>

Chesapeake Bay Phase 6 L

ec2-52-4-30-207.compute-1.amazonaws.com/chesbay/

Apps ★ Bookmarks CBP Mail USGS Mail @theCore IPDS Start · myUMBC Facebook Google Daum Equation Editor Explore Statistics wit... RUSLE - an online s... Quinoa Salad with S...

**USGS**  
science for a changing world

**USGS Home**  
Contact USGS  
Search USGS

## Chesapeake Bay Phase 6 Land Use Viewer

Download County Data: select...

Overlay Opacity:

Submit Comments to USGS

**Overlays** **Phase 6 Layers** **Base Maps**

Click [here](#) to see Phase 6 Local Land Use Methodology  
Click [here](#) to see Regional Mapping Methodology  
Click on the layer name to get information about the layer

- ☐ ☐ Turf Grass
- ☐ ☐ Impervious Roads
- ☐ ☐ Impervious Non-Roads
- ☐ ☐ Tree Canopy Over Roads
- ☐ ☐ Tree Canopy Over Other Impervious
- ☐ ☐ Tree Canopy Over Turf Grass
- ☐ ☐ Tree Canopy Over Scrub/Shrub
- ☐ ☐ Open Space
- ☐ ☐ Forest
- ☐ ☐ Tidal Wetland
- ☐ ☐ Non-tidal Floodplain Wetland
- ☐ ☐ Non-tidal Other Wetland
- ☐ ☐ Open Water
- ☐ ☐ Cropland
- ☐ ☐ Pasture

2 km  
2 mi

76 37799 40 09046

ENG 3:42 PM



# Chesapeake Bay Phase 6 Land Use Viewer

<http://chesapeake.usgs.gov/phase6/>

Chesapeake Bay Phase 6 L x

ec2-52-4-30-207.compute-1.amazonaws.com/chesbay/

Apps ★ Bookmarks CBP Mail USGS Mail @theCore IPDS Start · myUMBC Facebook Google Daum Equation Editor Explore Statistics wit... RUSLE - an online s... Quinoa Salad with S...

**USGS**  
science for a changing world

**USGS Home**  
**Contact USGS**  
**Search USGS**

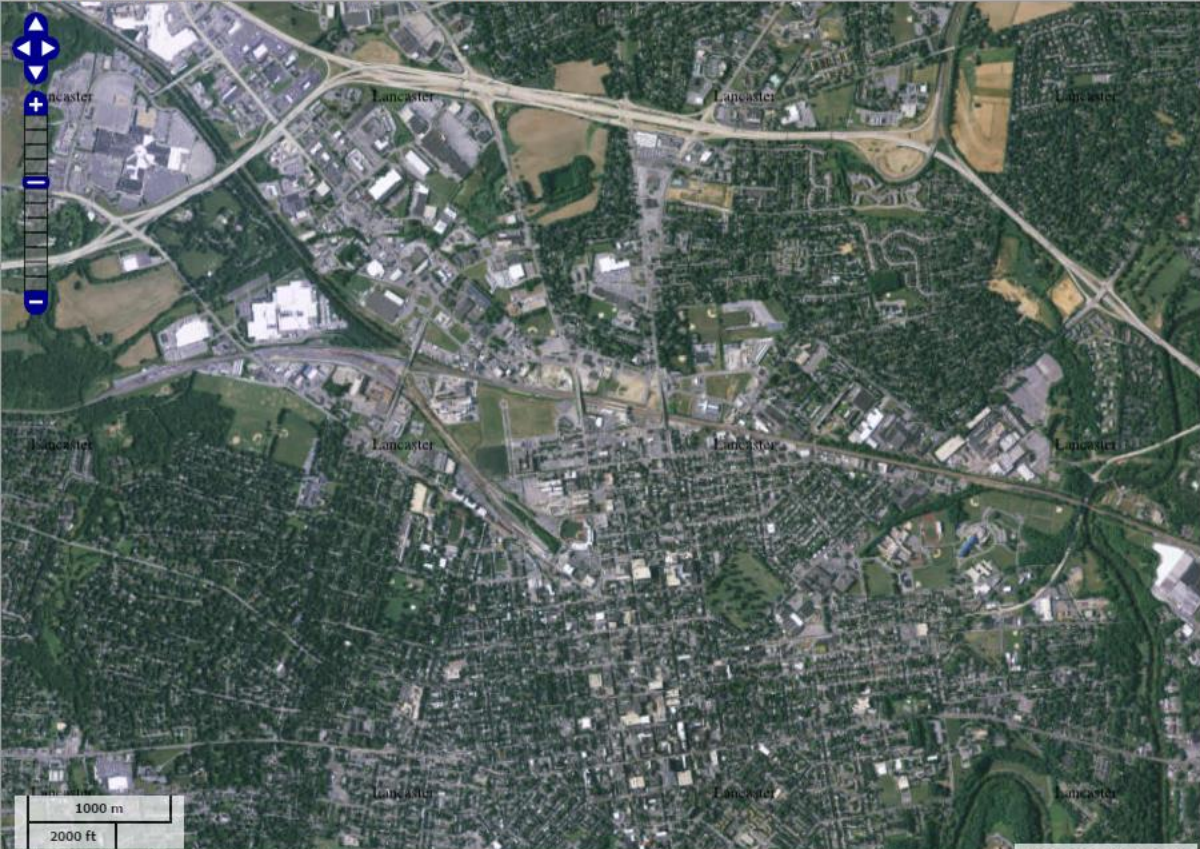
**Chesapeake Bay Phase 6 Land Use Viewer**

Download County Data: select...

Overlay Opacity: Submit Comments to USGS

**Overlays** **Phase 6 Layers** **Base Maps**

- ☐ None
- ☐ ESRI Topo
- ☒ ESRI Imagery
- ☐ ESRI Street Map



1000 m  
2000 ft

Windows taskbar: P, R, File Explorer, Chrome, Word, PowerPoint, Outlook, Edge, Task Manager, System Tray (4:07 PM, ENG)



# Chesapeake Bay Phase 6 Land Use Viewer

<http://chesapeake.usgs.gov/phase6/>

Chesapeake Bay Phase 6 L

ec2-52-4-30-207.compute-1.amazonaws.com/chesbay/

USGS science for a changing world

Chesapeake Bay Phase 6 Land Use Viewer

Download County Data: select...

Overlay Opacity: [Slider]

Submit Comments to USGS

Overlays Phase 6 Layers Base Maps

Click [here](#) to see Phase 6 Local Land Use Methodology  
Click [here](#) to see Regional Mapping Methodology  
Click on the layer name to get information about the layer

- ☒ Impervious Roads
- ☒ Impervious Non-Roads
- ☐ Tree Canopy Over Roads
- ☐ Tree Canopy Over Other Impervious
- ☐ Tree Canopy Over Turf Grass
- ☐ Tree Canopy Over Scrub/Shrub
- ☐ Turf Grass
- ☐ Open Space
- ☐ Forest
- ☐ Tidal Wetland
- ☐ Non-tidal Floodplain Wetland
- ☐ Non-tidal Other Wetland
- ☐ Open Water
- ☐ Cropland
- ☐ Pasture

1000 m  
2000 ft

4:09 PM



# Chesapeake Bay Phase 6 Land Use Viewer

<http://chesapeake.usgs.gov/phase6/>

Chesapeake Bay Phase 6 L x

ec2-52-4-30-207.compute-1.amazonaws.com/chesbay/

Apps ★ Bookmarks CBP Mail USGS Mail @theCore IPDS Start · myUMBC Facebook Google Daum Equation Editor Explore Statistics wit... RUSLE - an online s... Quinoa Salad with S...

**USGS**  
science for a changing world

**Chesapeake Bay Phase 6 Land Use Viewer**

Comment Download County Data: select...

**Overlay Opacity:**

Submit Comments to USGS

**Overlays** **Phase 6 Layers** **Base Maps**

Click [here](#) to see Phase 6 Local Land Use Methodology  
Click [here](#) to see Regional Mapping Methodology  
Click on the layer name to get information about the layer

- ☒ Impervious Roads
- ☒ Impervious Non-Roads
- ☐ Tree Canopy Over Roads
- ☐ Tree Canopy Over Other Impervious
- ☐ Tree Canopy Over Turf Grass
- ☐ Tree Canopy Over Scrub/Shrub
- ☐ Turf Grass
- ☐ Open Space
- ☐ Forest
- ☐ Tidal Wetland
- ☐ Non-tidal Floodplain Wetland
- ☐ Non-tidal Other Wetland
- ☐ Open Water
- ☐ Cropland
- ☐ Pasture

1000 m  
2000 ft

Windows Taskbar: P, R, File Explorer, Chrome, Word, PowerPoint, Outlook, 4:10 PM



# Chesapeake Bay Phase 6 Land Use Viewer

<http://chesapeake.usgs.gov/phase6/>

Chesapeake Bay Phase 6 L x

ec2-52-4-30-207.compute-1.amazonaws.com/chesbay/

Apps ★ Bookmarks CBP Mail USGS Mail @theCore IPDS Start · myUMBC Facebook Google Daum Equation Editor Explore Statistics wit... RUSLE - an online s... Quinoa Salad with S...

**USGS**  
science for a changing world

**USGS Home**  
Contact USGS  
Search USGS

**Chesapeake Bay Phase 6 Land Use Viewer**

Comment Download County Data: select...

Overlay Opacity: Submit Comments to USGS

Overlays Phase 6 Layers Base Maps

Click [here](#) to see Phase 6 Local Land Use Methodology  
Click [here](#) to see Regional Mapping Methodology  
Click on the layer name to get information about the layer

- Impervious Roads
- Impervious Non-Roads
- Tree Canopy Over Roads
- Tree Canopy Over Other Impervious
- Tree Canopy Over Turf Grass
- Tree Canopy Over Scrub/Shrub
- Turf Grass
- Open Space
- Forest
- Tidal Wetland
- Non-tidal Floodplain Wetland
- Non-tidal Other Wetland
- Open Water
- Cropland
- Pasture

500 m  
1000 ft

76.36838 -40.02902

ENG 3:47 PM



# Chesapeake Bay Phase 6 Land Use Viewer

<http://chesapeake.usgs.gov/phase6/>

Chesapeake Bay Phase 6 L x

ec2-52-4-30-207.compute-1.amazonaws.com/chesbay/

Apps ★ Bookmarks CBP Mail USGS Mail @theCore IPDS Start · myUMBC Facebook Google Daum Equation Editor Explore Statistics wit... RUSLE - an online s... Quinoa Salad with S...

**USGS**  
science for a changing world

**USGS Home**  
Contact USGS  
Search USGS

**Chesapeake Bay Phase 6 Land Use Viewer**

Download County Data: select...

Overlay Opacity: Submit Comments to USGS

**Overlays** **Phase 6 Layers** **Base Maps**

Click [here](#) to see Phase 6 Local Land Use Methodology  
Click [here](#) to see Regional Mapping Methodology  
Click on the layer name to get information about the layer

- ☒ Impervious Roads
- ☒ Impervious Non-Roads
- ☐ Tree Canopy Over Roads
- ☐ Tree Canopy Over Other Impervious
- ☐ Tree Canopy Over Turf Grass
- ☐ Tree Canopy Over Scrub/Shrub
- ☐ Turf Grass
- ☐ Open Space
- ☐ Forest
- ☐ Tidal Wetland
- ☐ Non-tidal Floodplain Wetland
- ☐ Non-tidal Other Wetland
- ☐ Open Water
- ☐ Cropland
- ☐ Pasture

500 m  
1000 ft

76.34937 -40.02457

ENG 3:48 PM



# Chesapeake Bay Phase 6 Land Use Viewer

<http://chesapeake.usgs.gov/phase6/>

Chesapeake Bay Phase 6 L x

ec2-52-4-30-207.compute-1.amazonaws.com/chesbay/

USGS science for a changing world

Chesapeake Bay Phase 6 Land Use Viewer

Download County Data: select...

Overlay Opacity: Submit Comments to USGS

Overlays Phase 6 Layers Base Maps

Click [here](#) to see Phase 6 Local Land Use Methodology  
Click [here](#) to see Regional Mapping Methodology  
Click on the layer name to get information about the layer:

- ☒ Impervious Roads
- ☒ Impervious Non-Roads
- ☐ Tree Canopy Over Roads
- ☒ Tree Canopy Over Other Impervious
- ☐ Tree Canopy Over Turf Grass
- ☐ Tree Canopy Over Scrub/Shrub
- ☒ Turf Grass
- ☐ Open Space
- ☐ Forest
- ☐ Tidal Wetland
- ☐ Non-tidal Floodplain Wetland
- ☐ Non-tidal Other Wetland
- ☐ Open Water
- ☐ Cropland
- ☐ Pasture

500 m 1000 ft

76 36580 40 02864

3:50 PM



# Chesapeake Bay Phase 6 Land Use Viewer

<http://chesapeake.usgs.gov/phase6/>

Chesapeake Bay Phase 6 L x

ec2-52-4-30-207.compute-1.amazonaws.com/chesbay/

Apps ★ Bookmarks CBP Mail USGS Mail @theCore IPDS Start · myUMBC Facebook Google Daum Equation Editor Explore Statistics wit... RUSLE - an online s... Quinoa Salad with S...

**USGS**  
science for a changing world

**USGS Home**  
Contact USGS  
Search USGS

## Chesapeake Bay Phase 6 Land Use Viewer

Download County Data: select...

Overlay Opacity:

Submit Comments to USGS

**Overlays** **Phase 6 Layers** **Base Maps**

Click [here](#) to see Phase 6 Local Land Use Methodology  
Click [here](#) to see Regional Mapping Methodology  
Click on the layer name to get information about the layer

<input type="checkbox"/>	<input checked="" type="checkbox"/>	<input type="checkbox"/>	Impervious Roads
<input type="checkbox"/>	<input checked="" type="checkbox"/>	<input type="checkbox"/>	Impervious Non-Roads
<input type="checkbox"/>	<input type="checkbox"/>	<input type="checkbox"/>	Tree Canopy Over Roads
<input type="checkbox"/>	<input checked="" type="checkbox"/>	<input type="checkbox"/>	Tree Canopy Over Other Impervious
<input type="checkbox"/>	<input checked="" type="checkbox"/>	<input type="checkbox"/>	Tree Canopy Over Turf Grass
<input type="checkbox"/>	<input type="checkbox"/>	<input type="checkbox"/>	Tree Canopy Over Scrub/Shrub
<input type="checkbox"/>	<input checked="" type="checkbox"/>	<input type="checkbox"/>	Turf Grass
<input type="checkbox"/>	<input type="checkbox"/>	<input type="checkbox"/>	Open Space
<input type="checkbox"/>	<input type="checkbox"/>	<input type="checkbox"/>	Forest
<input type="checkbox"/>	<input type="checkbox"/>	<input type="checkbox"/>	Tidal Wetland
<input type="checkbox"/>	<input type="checkbox"/>	<input type="checkbox"/>	Non-tidal Floodplain Wetland
<input type="checkbox"/>	<input type="checkbox"/>	<input type="checkbox"/>	Non-tidal Other Wetland
<input type="checkbox"/>	<input type="checkbox"/>	<input type="checkbox"/>	Open Water
<input type="checkbox"/>	<input type="checkbox"/>	<input type="checkbox"/>	Cropland
<input type="checkbox"/>	<input type="checkbox"/>	<input type="checkbox"/>	Pasture

500 m  
1000 ft

76.34611 -40.02345

ENG 3:51 PM



# Chesapeake Bay Phase 6 Land Use Viewer

<http://chesapeake.usgs.gov/phase6/>

Chesapeake Bay Phase 6 L x

ec2-52-4-30-207.compute-1.amazonaws.com/chesbay/

Apps ★ Bookmarks CBP Mail USGS Mail @theCore IPDS Start · myUMBC Facebook Google Daum Equation Editor Explore Statistics wit... RUSLE - an online s... Quinoa Salad with S...

**USGS**  
science for a changing world

**Chesapeake Bay Phase 6 Land Use Viewer**

Comment Download County Data: select...

Overlay Opacity: Submit Comments to USGS

Overlays Phase 6 Layers Base Maps

Click [here](#) to see Phase 6 Local Land Use Methodology  
Click [here](#) to see Regional Mapping Methodology  
Click on the layer name to get information about the layer

- ☐ Impervious Roads
- ☐ Impervious Non-Roads
- ☐ Tree Canopy Over Roads
- ☐ Tree Canopy Over Other Impervious
- ☐ Tree Canopy Over Turf Grass
- ☐ Tree Canopy Over Scrub/Shrub
- ☐ Turf Grass
- ☐ Open Space
- ☐ Forest
- ☐ Tidal Wetland
- ☐ Non-tidal Floodplain Wetland
- ☐ Non-tidal Other Wetland
- ☐ Open Water
- ☐ Cropland
- ☐ Pasture

500 m  
1000 ft

76 35498 40 03078

ENG 3:52 PM



# Chesapeake Bay Phase 6 Land Use Viewer

<http://chesapeake.usgs.gov/phase6/>

Chesapeake Bay Phase 6 L

ec2-52-4-30-207.compute-1.amazonaws.com/chesbay/

USGS science for a changing world

Chesapeake Bay Phase 6 Land Use Viewer

Comment Download County Data: select...

Submit Comment on 40.02207, -76.37168:

☐ Prevent this page from creating additional dialogs.

OK Cancel

Overlay Opacity:

Submit Comments to USGS

Phase 6 Layers Base Maps

Click [here](#) to see Phase 6 Local Land Use Methodology

Click [here](#) to see Regional Mapping Methodology

Click on the layer name to get information about the layer

- ☒ Impervious Roads
- ☒ Impervious Non-Roads
- ☒ Tree Canopy Over Roads
- ☒ Tree Canopy Over Other Impervious
- ☒ Tree Canopy Over Turf Grass
- ☒ Tree Canopy Over Scrub/Shrub
- ☒ Turf Grass
- ☒ Open Space
- ☒ Forest
- ☒ Tidal Wetland
- ☒ Non-tidal Floodplain Wetland
- ☒ Non-tidal Other Wetland
- ☒ Open Water
- ☒ Cropland
- ☒ Pasture

500 m 1000 ft

76.37168 -40.02207

ENG 3:53 PM



# Chesapeake Bay Phase 6 Land Use Viewer

<http://chesapeake.usgs.gov/phase6/>

Chesapeake Bay Phase 6 L x

ec2-52-4-30-207.compute-1.amazonaws.com/chesbay/

USGS science for a changing world

## Chesapeake Bay Phase 6 Land Use Viewer

Comment Download County Data: select...

ec2-52-4-30-207.compute-1.amazonaws.com says:

Submit Comment on 40.02223, -76.37168:

This is cropland, not open space.

☐ Prevent this page from creating additional dialogs.

OK Cancel

Overlay Opacity: Submit Comments to USGS

Phase 6 Layers Base Maps

Click [here](#) to see Phase 6 Local Land Use Methodology

Click [here](#) to see Regional Mapping Methodology

Click on the layer name to get information about the layer:

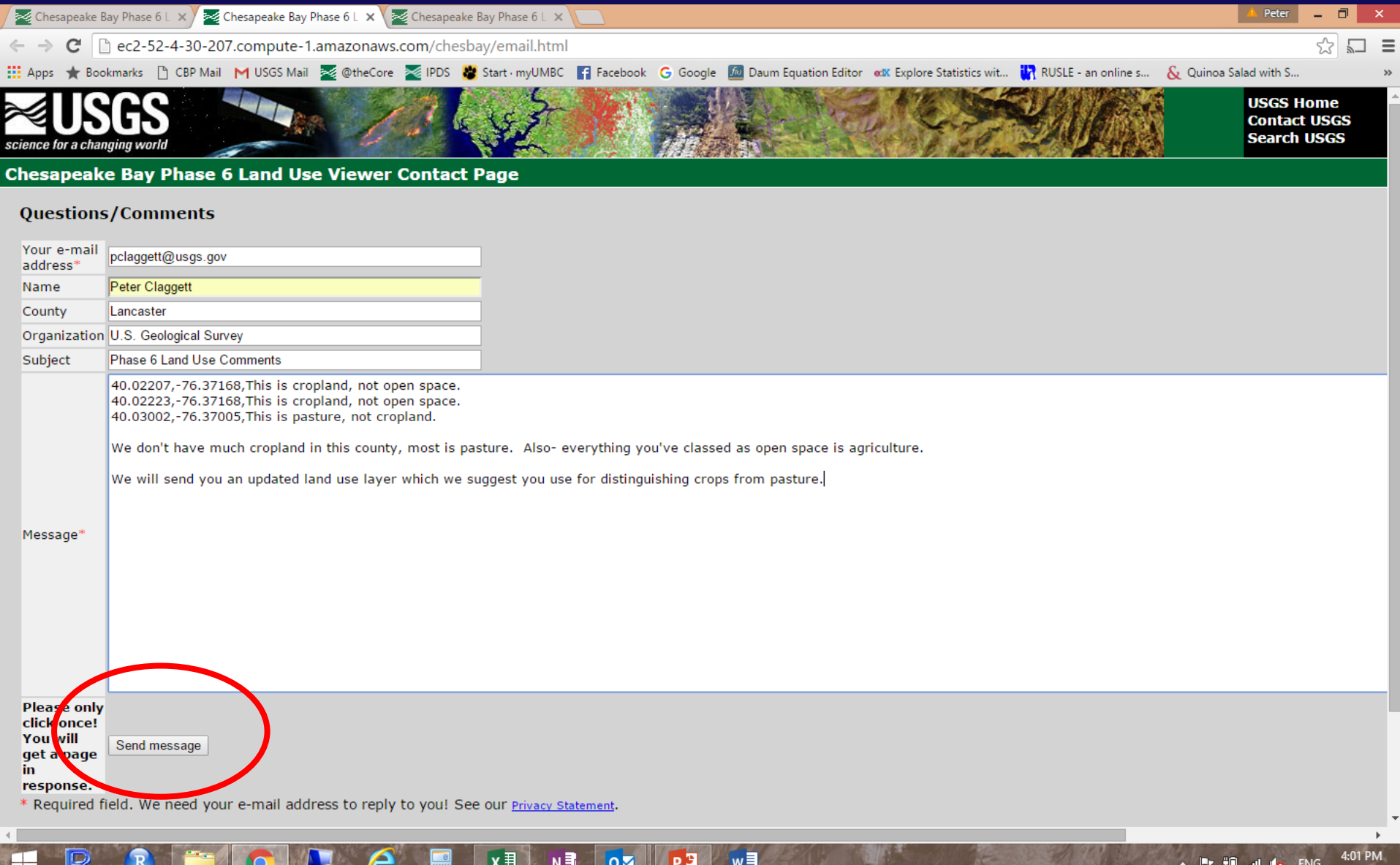
- ☒ Impervious Roads
- ☒ Impervious Non-Roads
- ☒ Tree Canopy Over Roads
- ☒ Tree Canopy Over Other Impervious
- ☒ Tree Canopy Over Turf Grass
- ☒ Tree Canopy Over Scrub/Shrub
- ☒ Turf Grass
- ☒ Open Space
- ☒ Forest
- ☒ Tidal Wetland
- ☒ Non-tidal Floodplain Wetland
- ☒ Non-tidal Other Wetland
- ☒ Open Water
- ☒ Cropland
- ☒ Pasture

500 m 1000 ft

76.37168, 40.02223

3:55 PM

<http://chesapeake.usgs.gov/phase6/>





# For more information:

Webinar Recording, Project Description (whitepaper), Frequently Asked Questions (TBD),  
Production/Review Schedule (TBD): :

<http://www.chesapeakebay.net/calendar/event/23454/>

Phase 6 Land Use Database:

<http://chesapeake.usgs.gov/phase6/>

High-resolution Land Cover Data (VA):

<http://gismaps.vita.virginia.gov/arcgis/rest/services>

High-resolution Land Cover Data (DC, DE, MD, PA, NY, and WV):

- Separate websites will be developed and launched by CC and UVM for each batch of land cover data produced.

Phase 6 Land Use Database:

- U.S. Geological Survey: Fred Irani, [firani@usgs.gov](mailto:firani@usgs.gov), Peter Claggett, [pclaggett@usgs.gov](mailto:pclaggett@usgs.gov)

High-resolution Land Cover Datasets:

- Chesapeake Conservancy: Cassandra Pallai, [cpallai@chesapeakeconservancy.org](mailto:cpallai@chesapeakeconservancy.org)
- University of Vermont: Jarlath O'Neil-Dunne, [Jarlath.ONeil-Dunne@uvm.edu](mailto:Jarlath.ONeil-Dunne@uvm.edu)
- Virginia Department of Environmental Quality: James Davis-Martin, [James.Davis-Martin@deq.virginia.gov](mailto:James.Davis-Martin@deq.virginia.gov)