



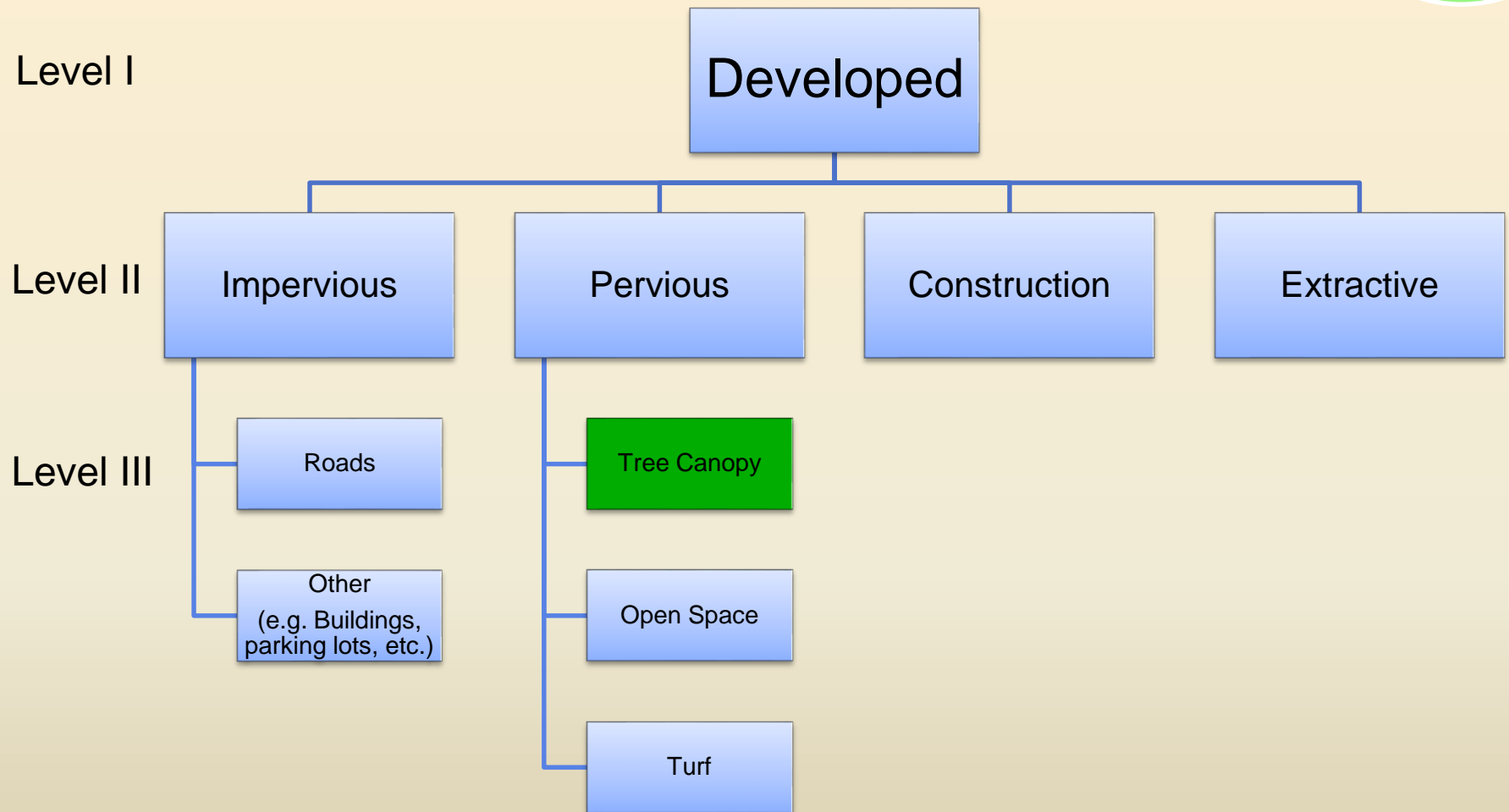
**Chesapeake Bay Program**  
*A Watershed Partnership*

# P6 Trees

**Peter Claggett, U.S. Geological Survey**  
**Quentin Stubbs, U.S. Geological Survey**

# Proposed Developed Phase 6 Land Uses

Developed



# Proposed Developed Phase 6 Land Uses

Natural

Level I

Natural

Level II

Forests

Wetlands

Water

(e.g., lakes, streams and ponds)

Level III

Undisturbed

Harvested

Disturbed  
(e.g. insects, fire,  
etc.)

Tidal  
(saline & fresh)

Floodplain

Headwater/  
Depressional

# Proposed Natural Phase 6 Land Uses

Natural

## Phase 6

Forests  
Harvested forest  
Disturbed forest

Tidal wetlands  
Floodplain wetlands  
Headwater wetlands

Water\*

## Phase 5.3.2

Woody/open  
Harvested forest

Water

\* Will expand water coverage to include 1:24K National Hydrography Dataset waterbodies and possibly Dynamic Surface Water Extent.



# Proposed Phase 6 Definitions of “Forests” and “Urban Tree Canopy”

## 1. Forests

### A. Developed “urban” areas

- Patches of trees; and
- Un-fragmented by roads; and
- Buffered 10m from adjacent land uses; and
- $\geq 1$  acre and wide enough to accommodate a 1-acre circle

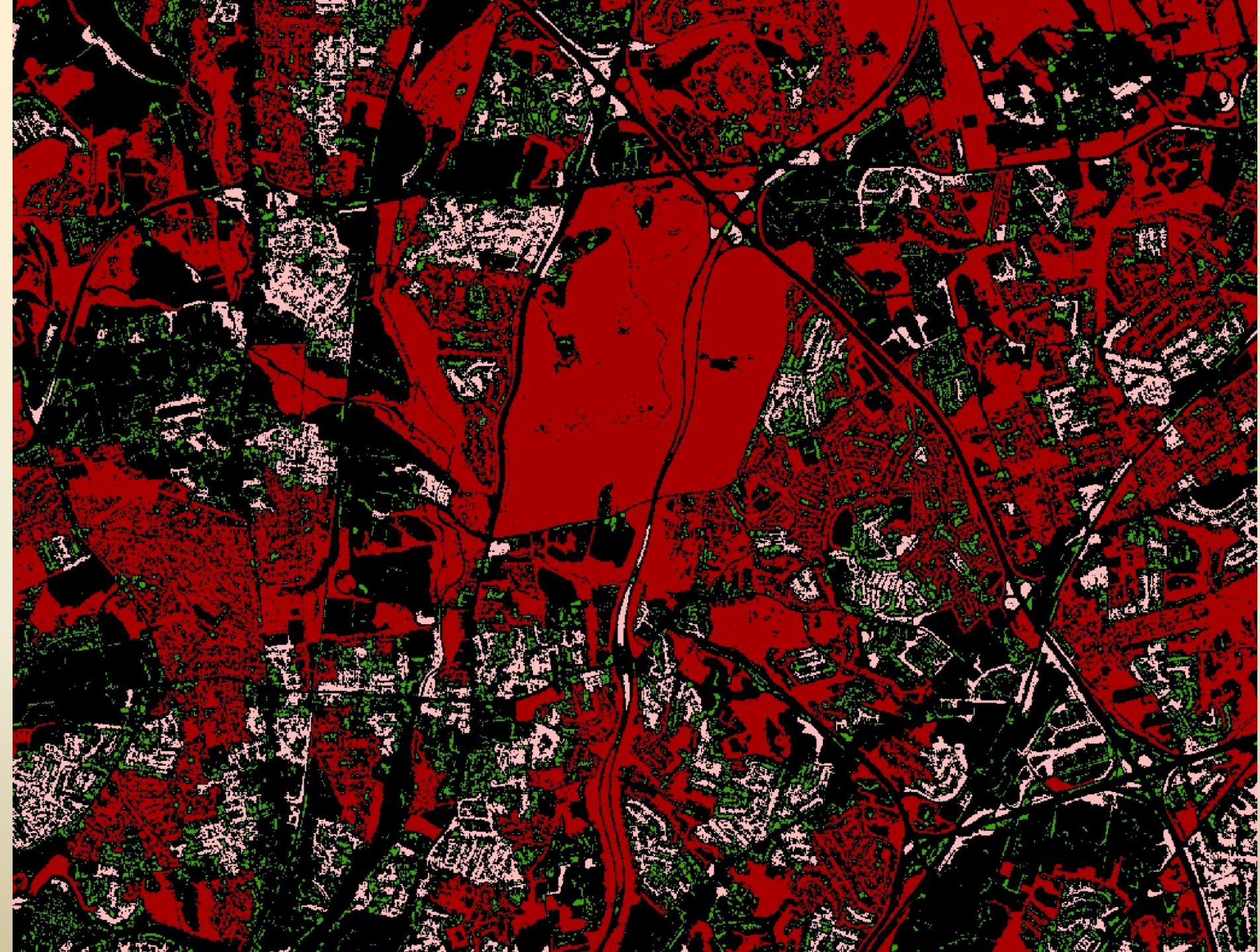
### B. Rural areas

- All trees

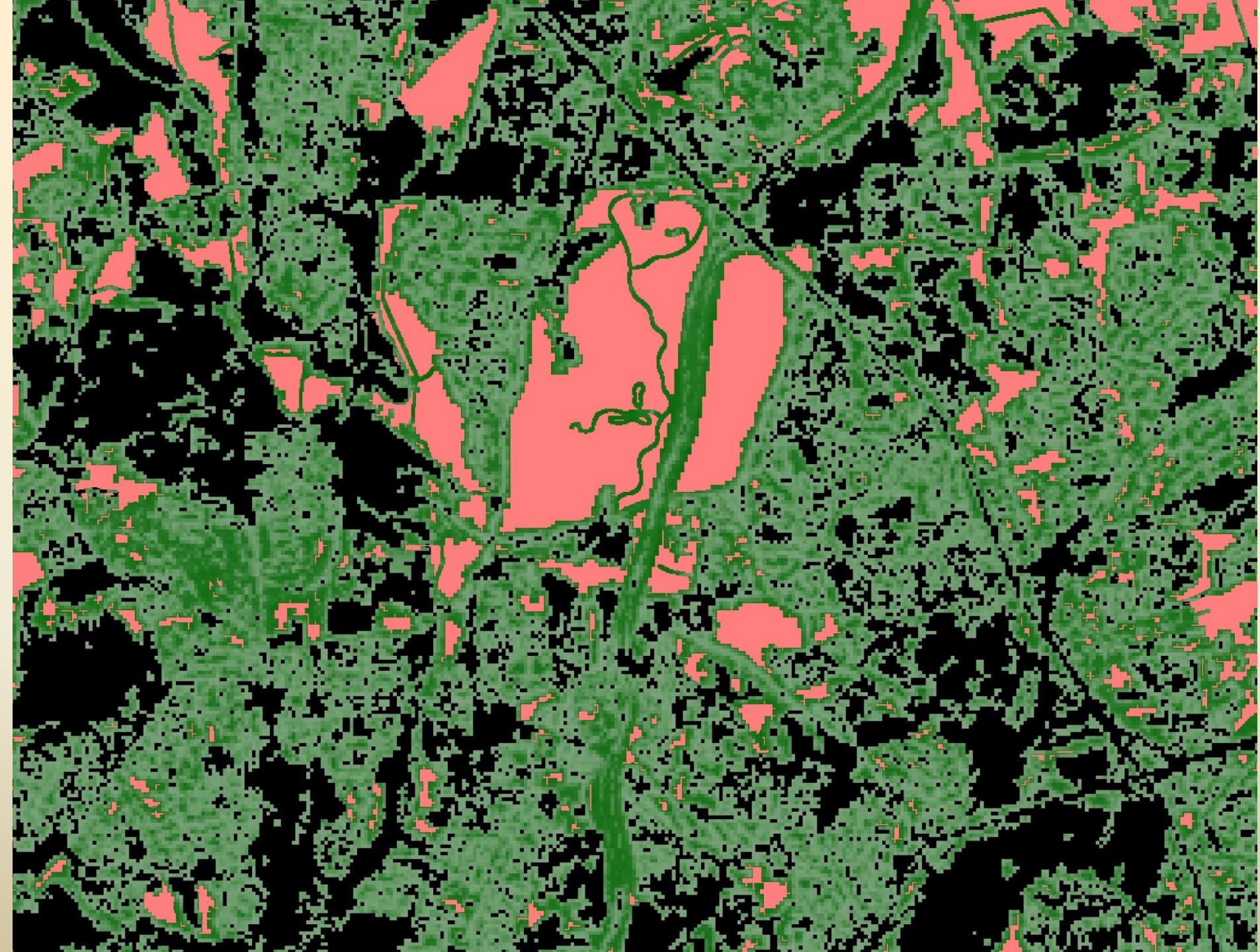
## 2. Urban tree canopy

- Trees in developed areas; and
- Within 10m of adjacent land uses; or
- In patches  $< 1$  acre

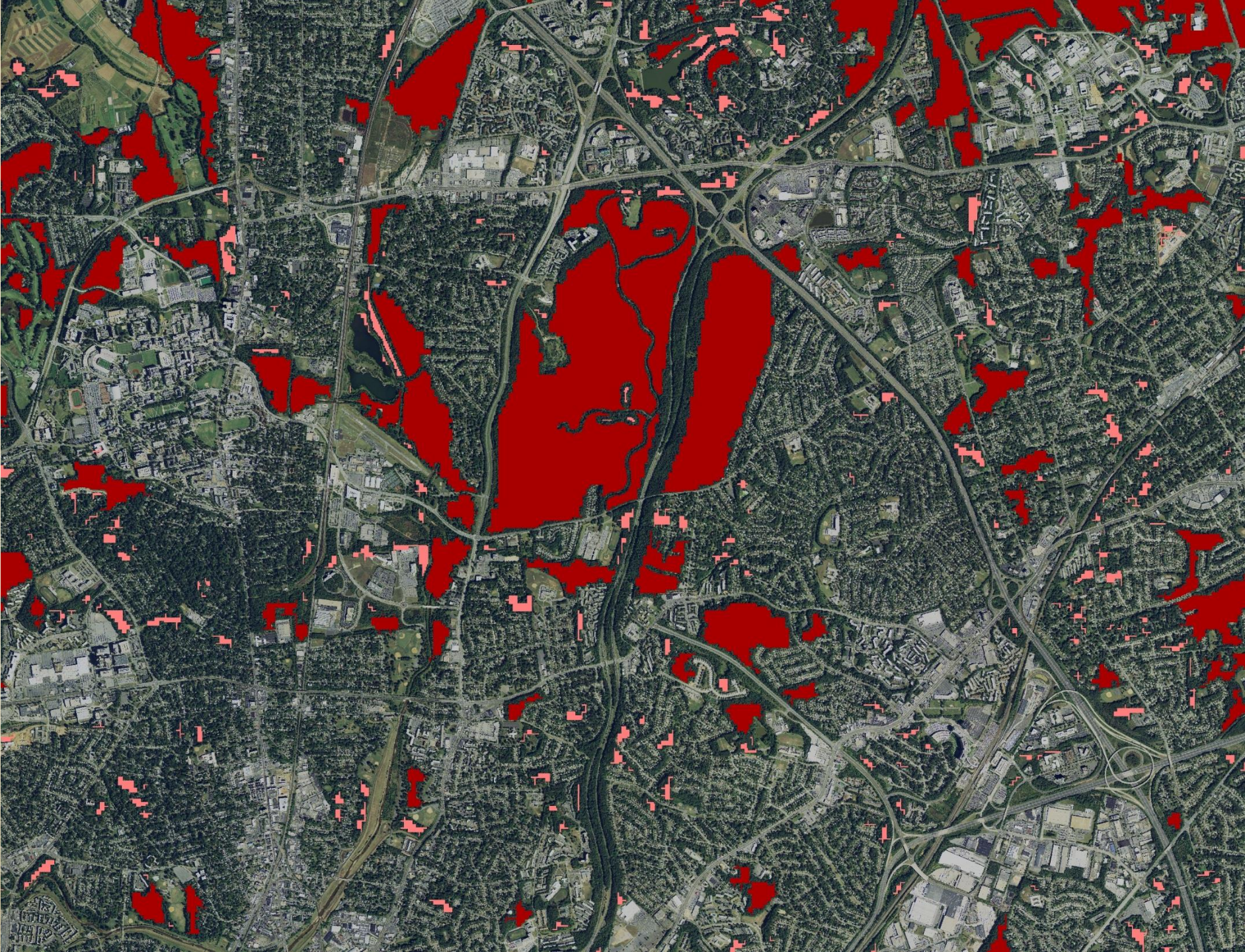




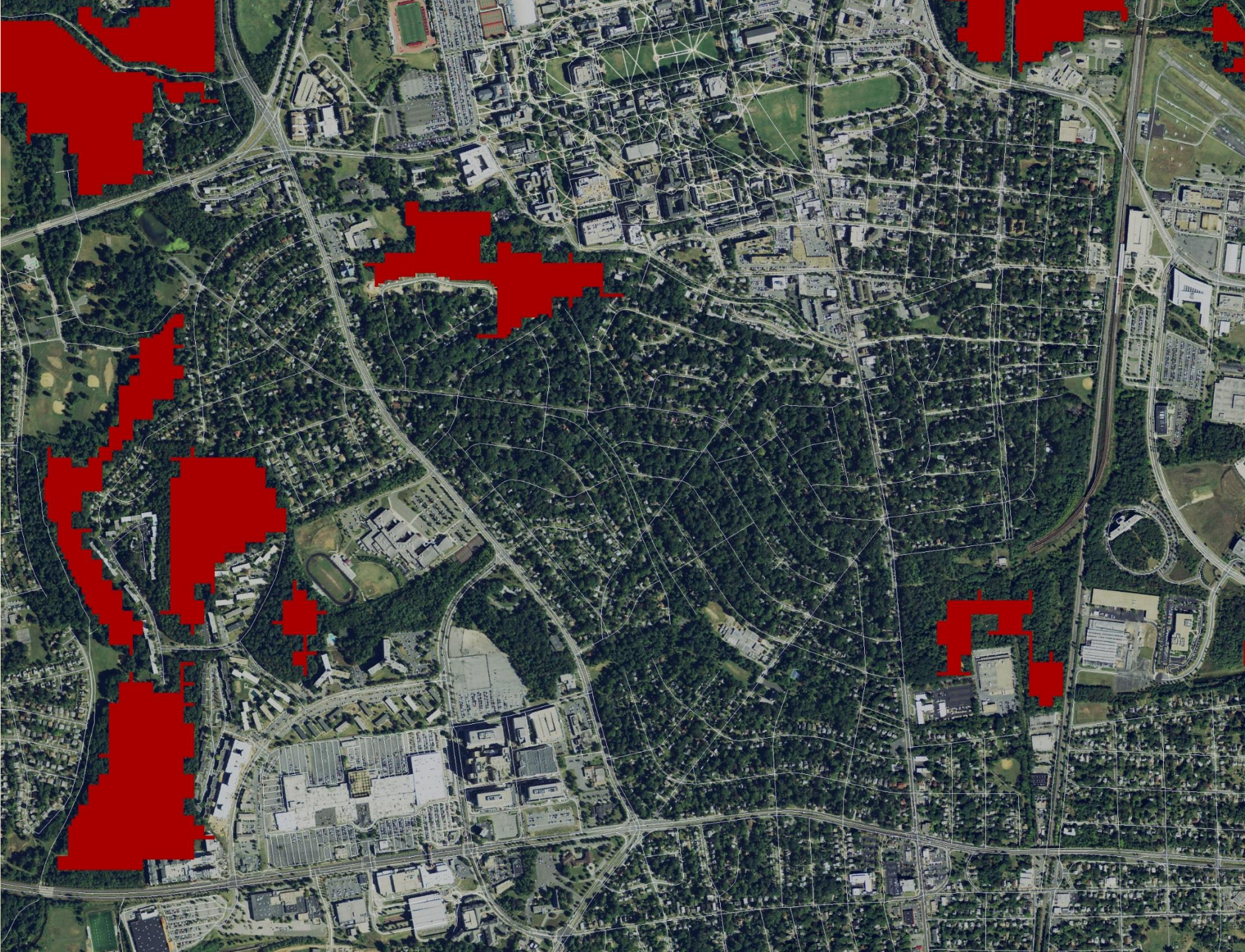




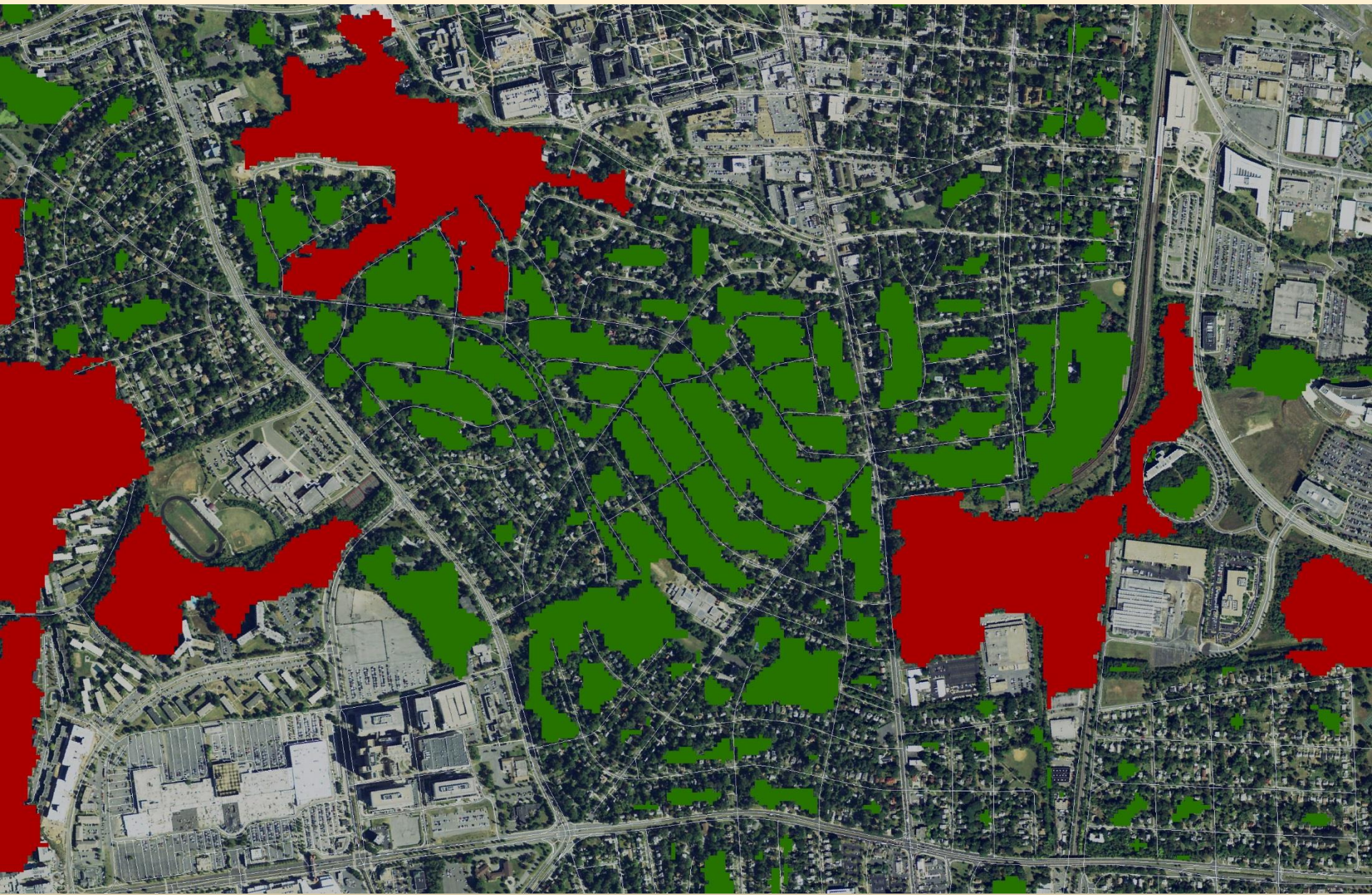




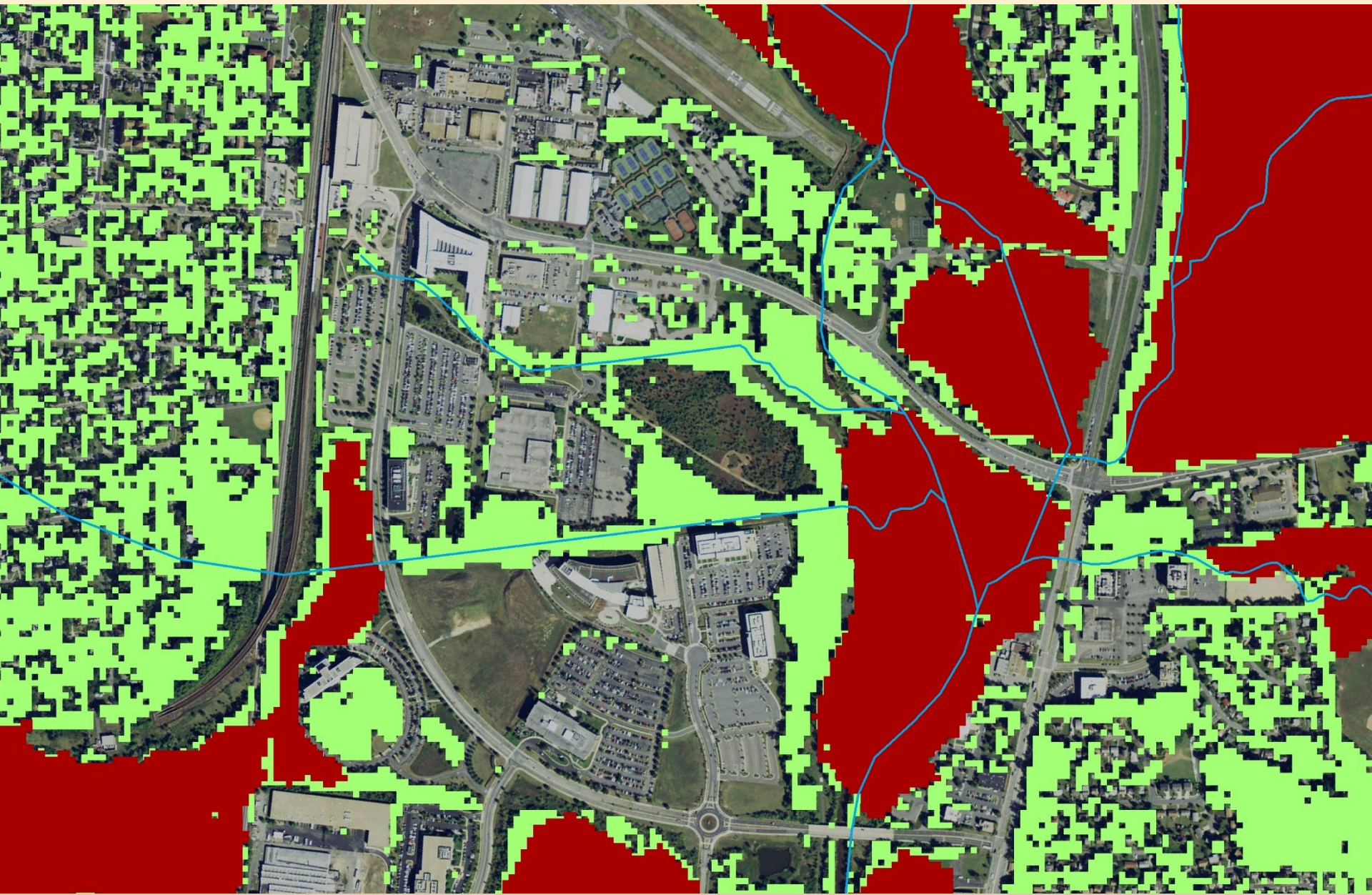




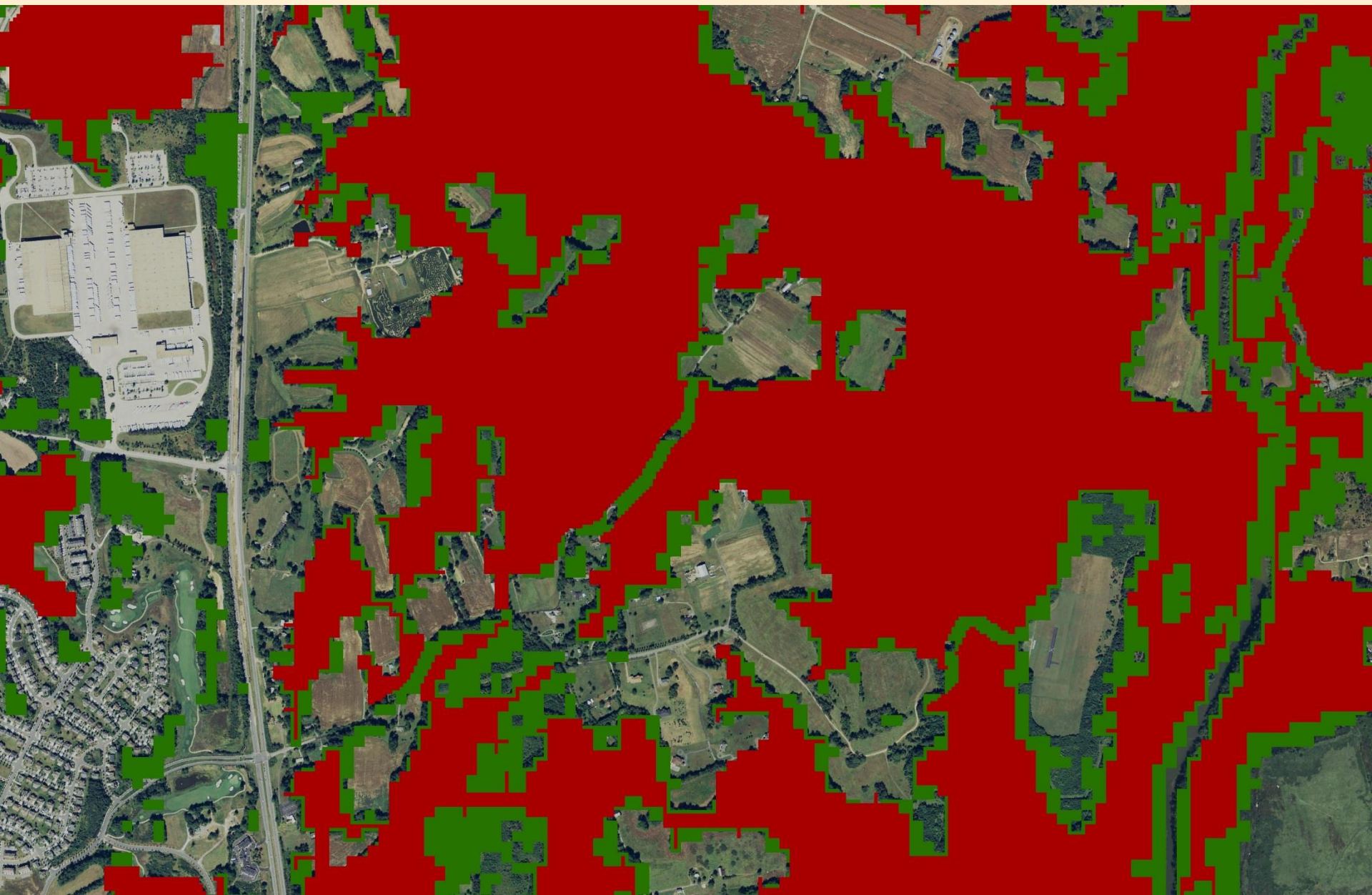














**Land Cover Data Received to Date (August 2014)**

**Land Cover Data Inventory**

- Data Received
- No Data Submitted
- State Boundaries
- Watershed Boundary
- Chesapeake Bay

0 12.5 25 50 75 100 Miles

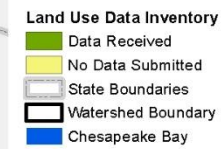


**Land Use Data Received to Date (August 2014)**

**Land Use Data Inventory**

- Data Received
- No Data Submitted
- State Boundaries
- Watershed Boundary
- Chesapeake Bay

Map showing Land Use Data Received to Date (August 2014) for the Chesapeake Bay watershed. The map displays counties in the watershed, color-coded by data status: green for Data Received and yellow for No Data Submitted. State boundaries are shown in grey, and the Chesapeake Bay is highlighted in blue. Neighboring states and the District of Columbia are labeled: NY, PA, WV, VA, NJ, DE, and DC. A scale bar indicates distances from 0 to 100 miles.

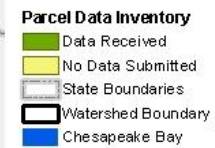


**Parcel Data Received to Date (August 2014)**

**Parcel Data Inventory**

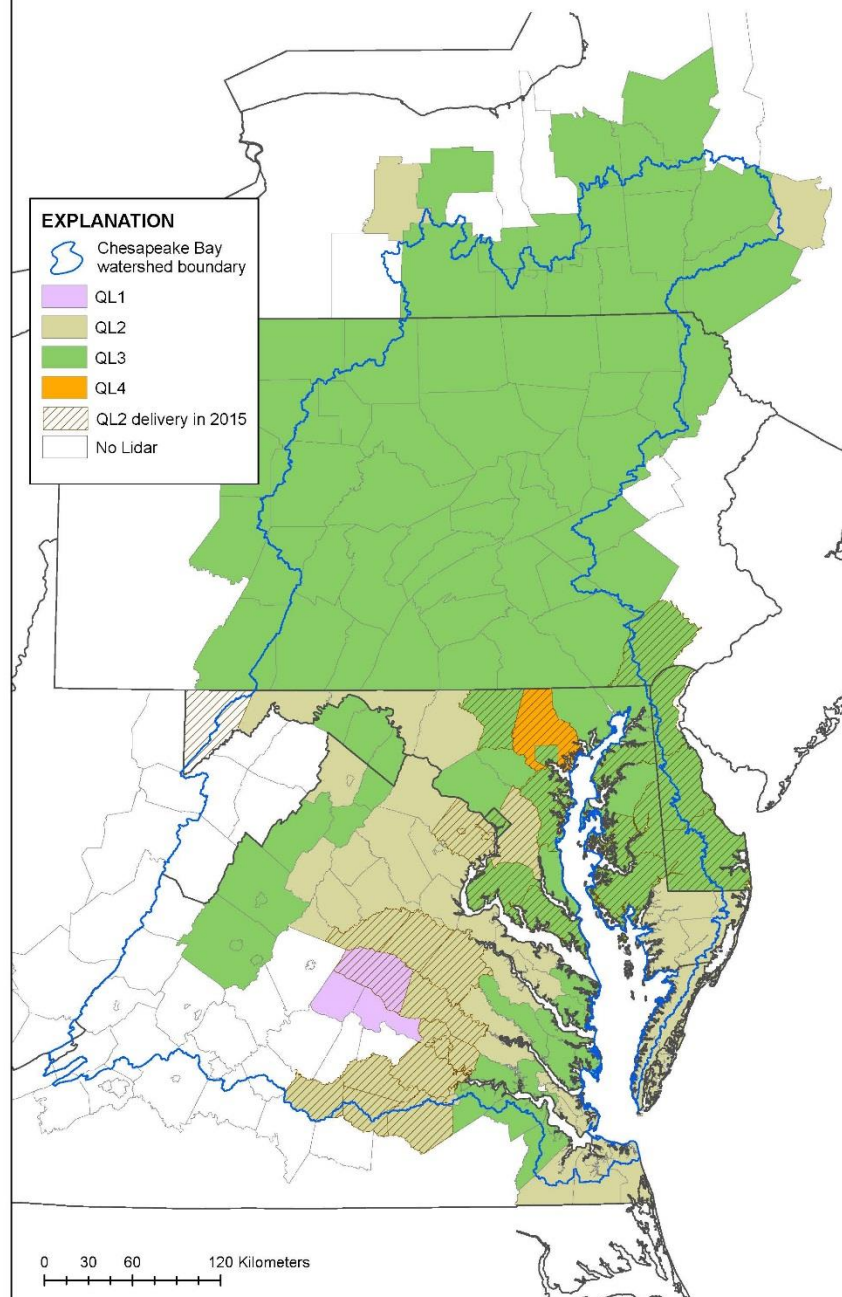
- Data Received
- No Data Submitted
- State Boundaries
- Watershed Boundary
- Chesapeake Bay

0 15 30 60 90 120 Miles





# Chesapeake Bay Watershed Lidar Data by County, January 2015





**Chesapeake Bay Program**  
*A Watershed Partnership*

# Phase 6 Land Use

**Peter Claggett, [pclaggett@usgs.gov](mailto:pclaggett@usgs.gov)**  
**Quentin Stubbs, [qstubbs@usgs.gov](mailto:qstubbs@usgs.gov)**