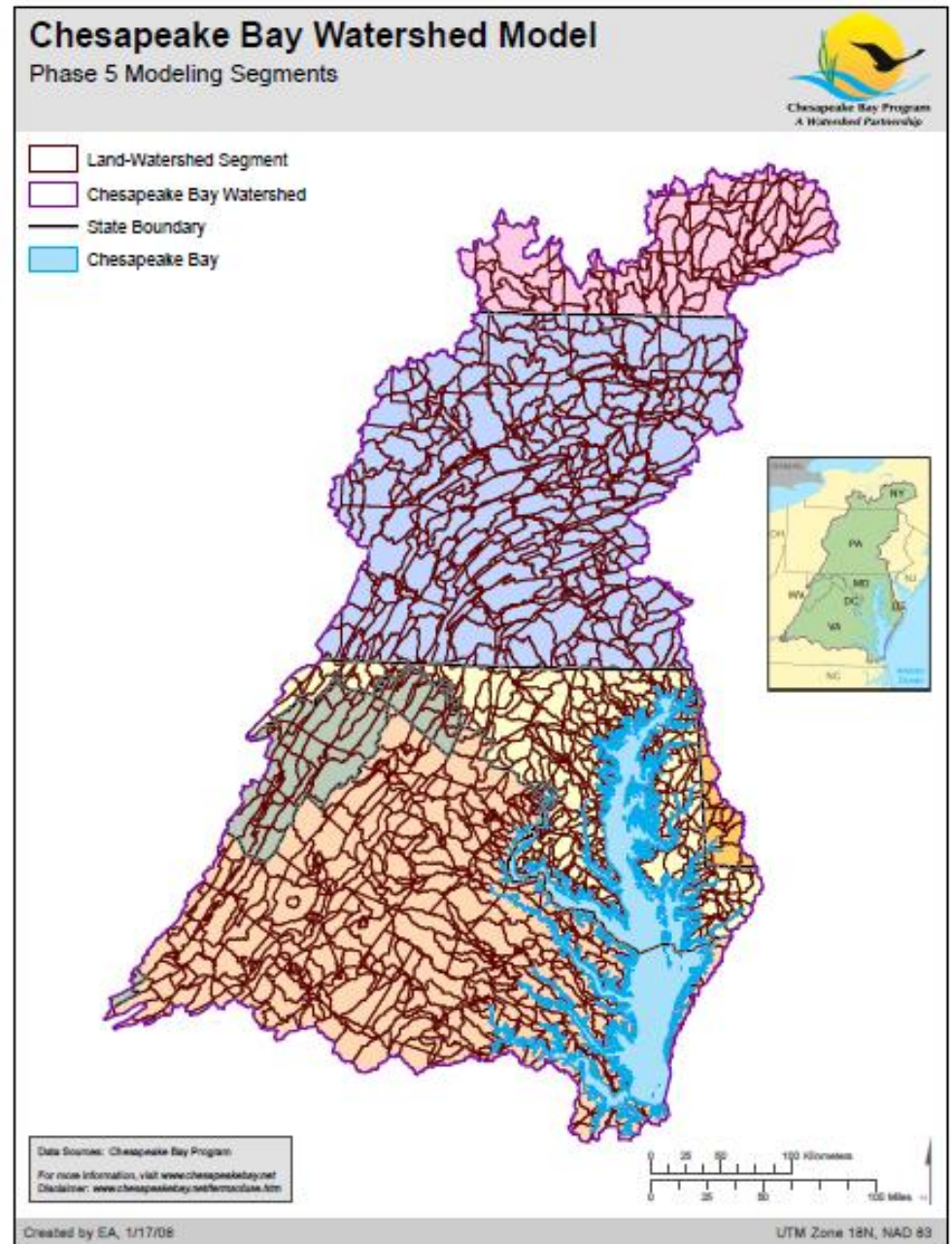


## Bay Model Phase 5 Segments

(i.e., the current model)

For discussion purposes, there may be 2 to 6 segments per county depending.

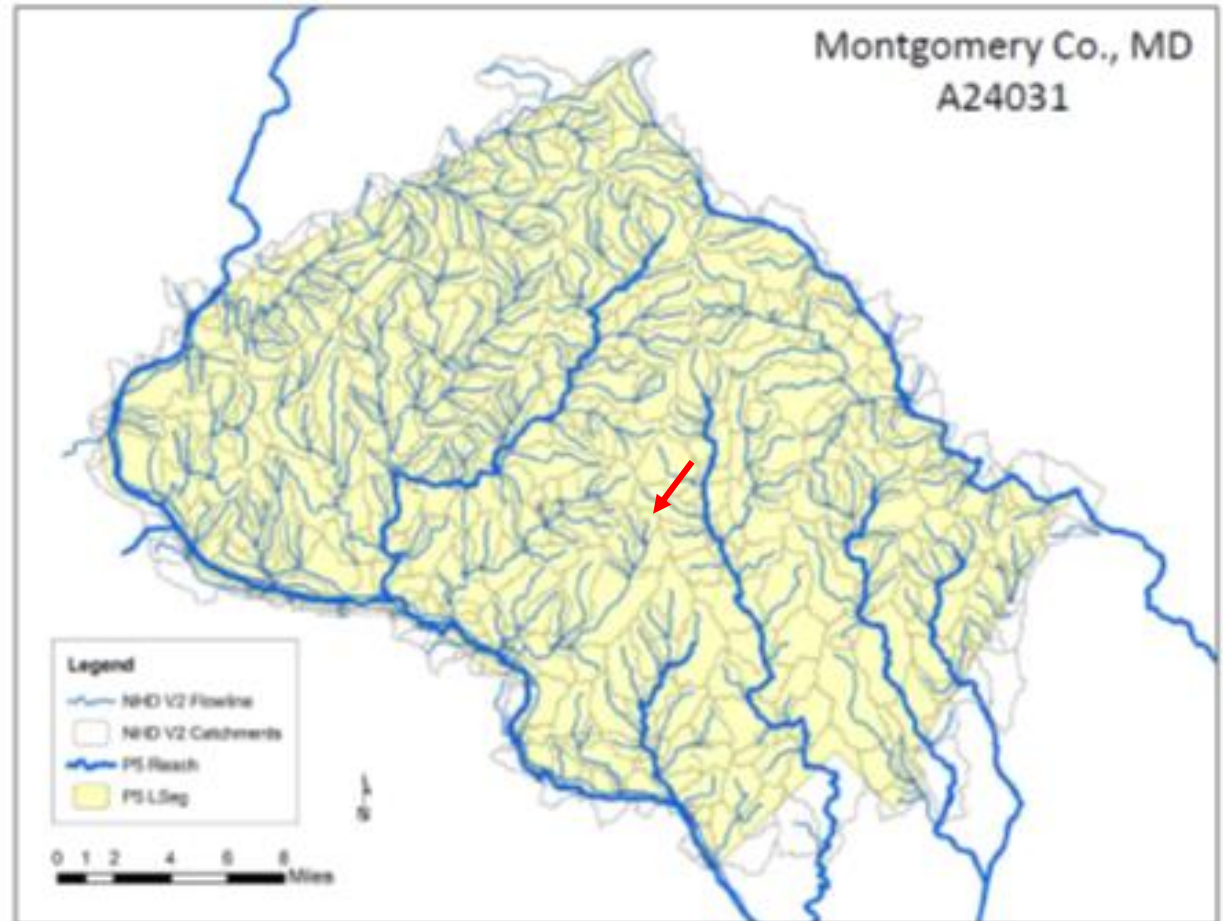


## Bay Model Phase 6 (i.e., ready end of 2017)

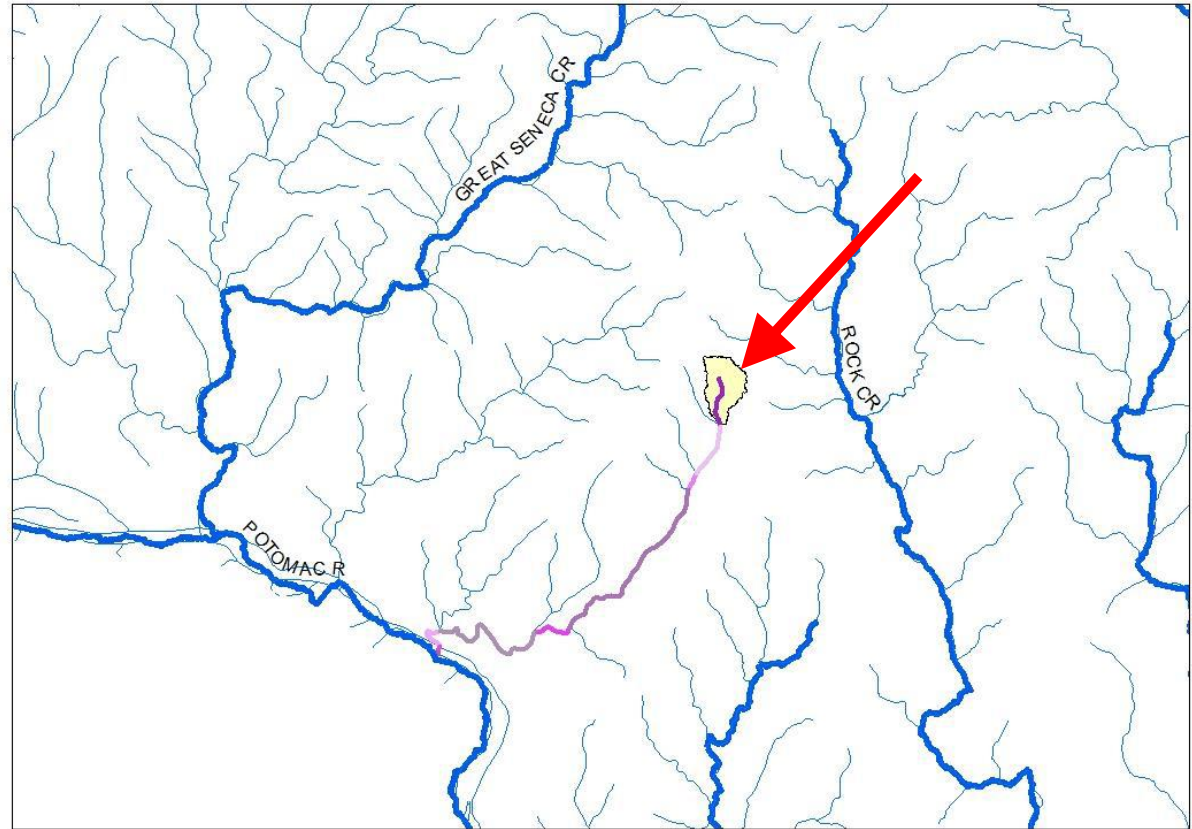
Phase 6 model will have the capacity to disaggregate down to “NHD Plus catchments.” (CBP might use a different name)

One NHD Plus catchment is shown by the arrow.

For discussion purposes, there may be hundreds of such segments per county.



Arrow points to the same catchment as previous page.



## For TOWG Discussion Only

Same small segment is highlighted showing just how small these catchments are on the landscape.

