


The background is a light gray gradient. It is decorated with several realistic water droplets of various sizes, some with highlights and shadows, scattered across the top and bottom edges. In the upper center, there is a faint, circular logo or watermark that appears to be a globe or a similar abstract design.

POINT SOURCE DATA

PROJECT UPDATE AND JURISDICTION OUTREACH

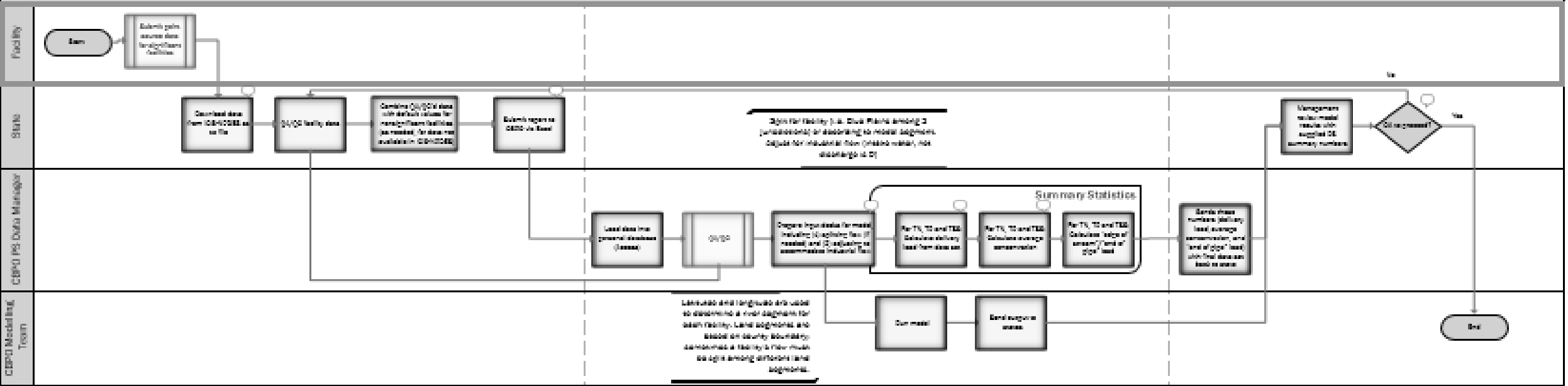


Outline

- Update of Project Results
 - Challenges
 - Vision
 - Discussion Items
 - Proposed Solutions
 - Resources
 - Timeline
- 

PROJECT RESULTS

Data Flow for Point Source Data under NPDES Permits for Reporting to Chesapeake Bay Program Office (CBPO)





Outline

- Update of Project Results
 - **Challenges: Data Quality and Data Transparency**
 - Vision
 - Discussion Items
 - Proposed Solutions
 - Resources
 - Timeline
- 



Outline

- Update of Project Results
 - Challenges
 - **Vision: Consistent, QA/QC, Single Source, Reduced LOE**
 - Discussion Items
 - Proposed Solutions
 - Resources
 - Timeline
- 




Outline

- Update of Project Results
- Challenges
- Vision
- **Discussion Items**
 - Proposed Solutions
 - Resources
 - Timeline





Outline

- Update of Project Results
 - Challenges
 - Vision
 - Discussion Items
 - **Proposed Solutions**
 - Resources
 - Timeline
- 

Outline

- Update of Project Results
- Challenges
- Vision
- Discussion Items
- Proposed Solutions
- **Resources**
- Timeline



Outline

- Update of Project Results
 - Challenges
 - Vision
 - Discussion Items
 - Proposed Solutions
 - Resources
 - **Timeline**
- 

QUESTIONS?

- **One-on-one** follow-up conversations at a later time
- At this time, feedback about framework or process?
- General Concerns?

Laura Free

Free.laura@epa.gov

202-564-2653