



Chesapeake Bay Program
Science. Restoration. Partnership.

Climate Resiliency Outcomes: DEIJ Discussion

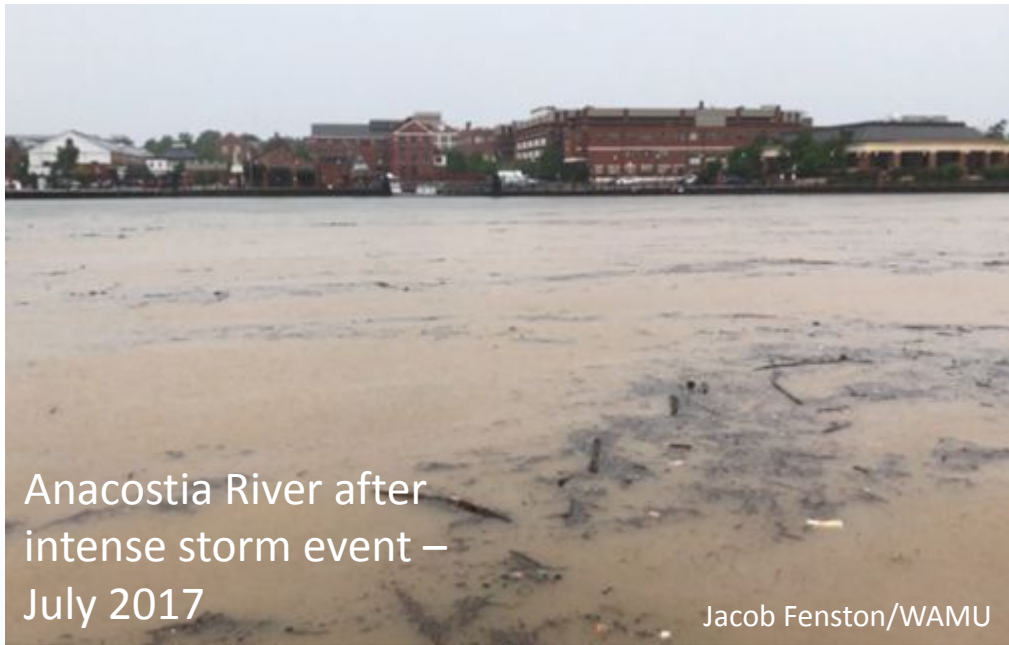
Julie Reichert-Nguyen, NOAA

Breck Sullivan, CRC



Climate Resiliency Goal

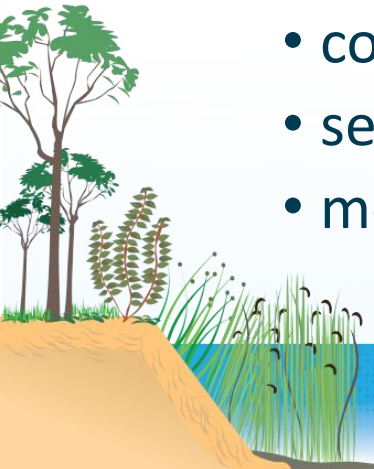
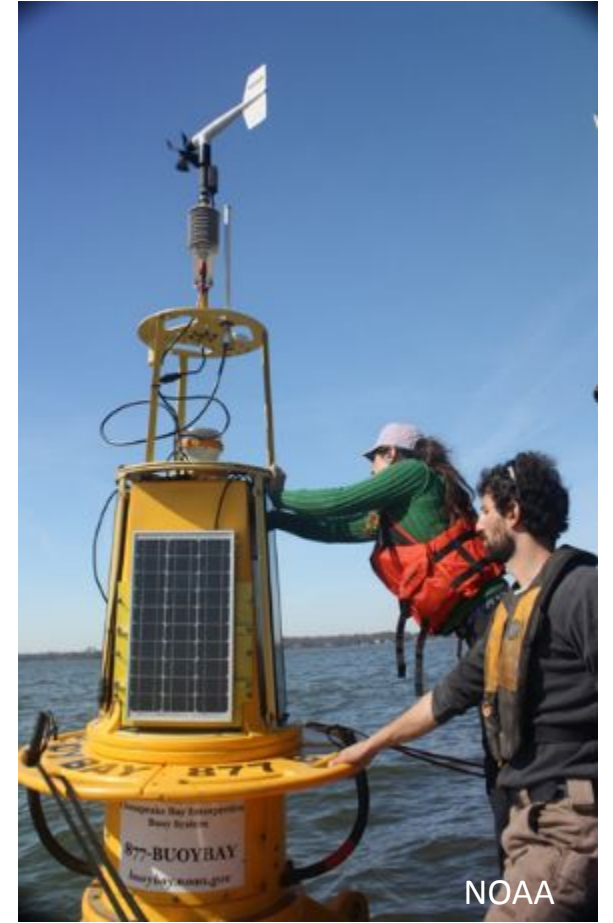
- Increase the resiliency of the Chesapeake Bay and watershed, including its living resources, habitats, public infrastructure and communities, to withstand adverse impacts from changing environmental and climate conditions.





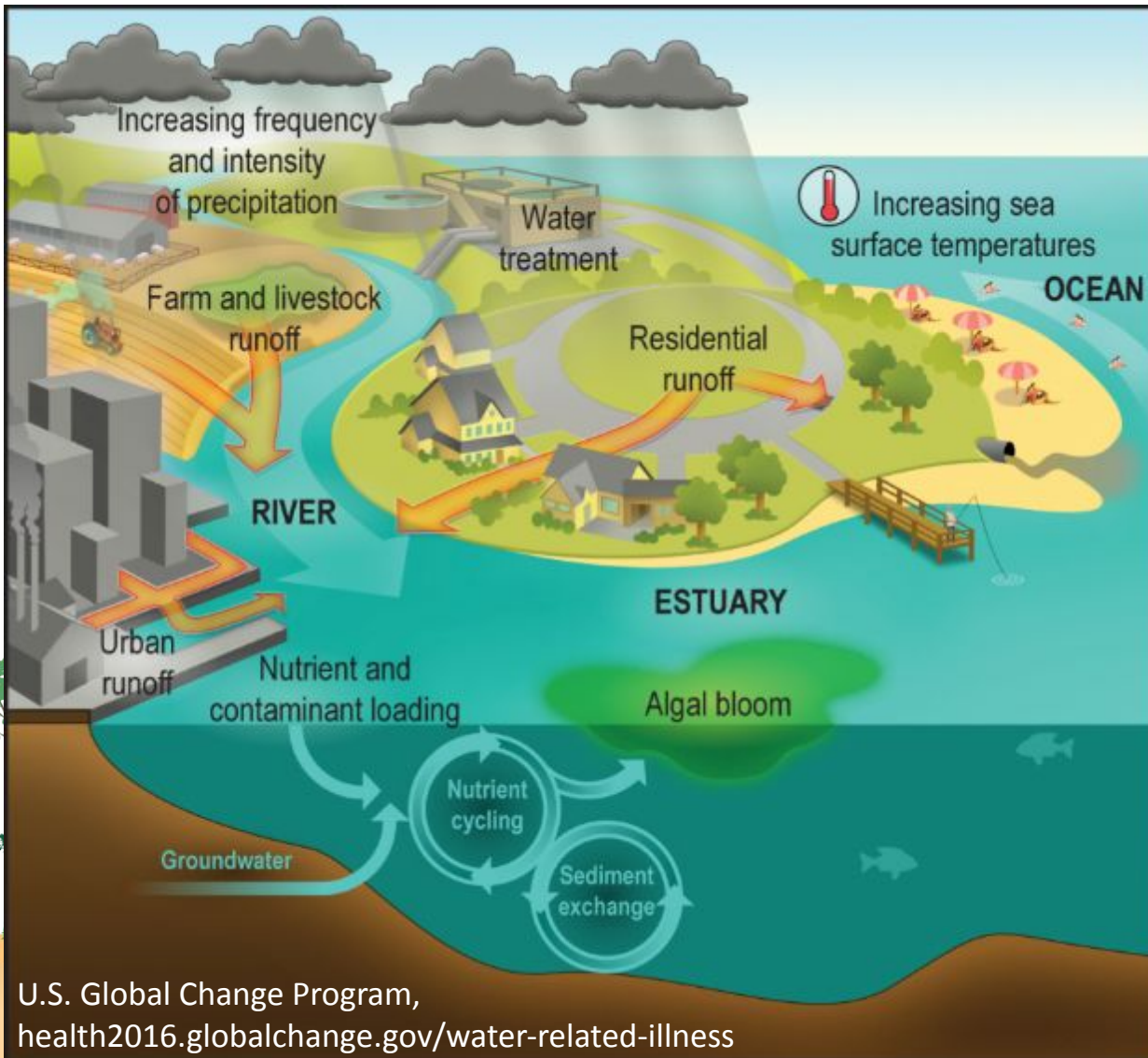
Climate Resiliency Outcomes

- **Monitoring and Assessment:** Monitor and assess trends and likely impacts of changing climate and sea level conditions on the Chesapeake Bay ecosystem, including the effectiveness of restoration and protection policies, programs, and projects.
- **Adaptation:** Pursue, design, and construct restoration and protection projects to enhance resiliency of the Bay and aquatic ecosystems from the impacts of:
 - coastal erosion
 - coastal flooding
 - sea level rise
 - more frequent intense storms





Climate Change – Local Ecological and Community Impacts



- Flooding/infrastructure damage
- Land loss or changes in land use
- Increased threats to human health/safety (urban heat island effect, extreme storms)
- Degraded water quality and habitats (excess nutrients, wetland loss)
- Ecosystem/seasonal shifts (change in fish and tree species distribution/diversity)



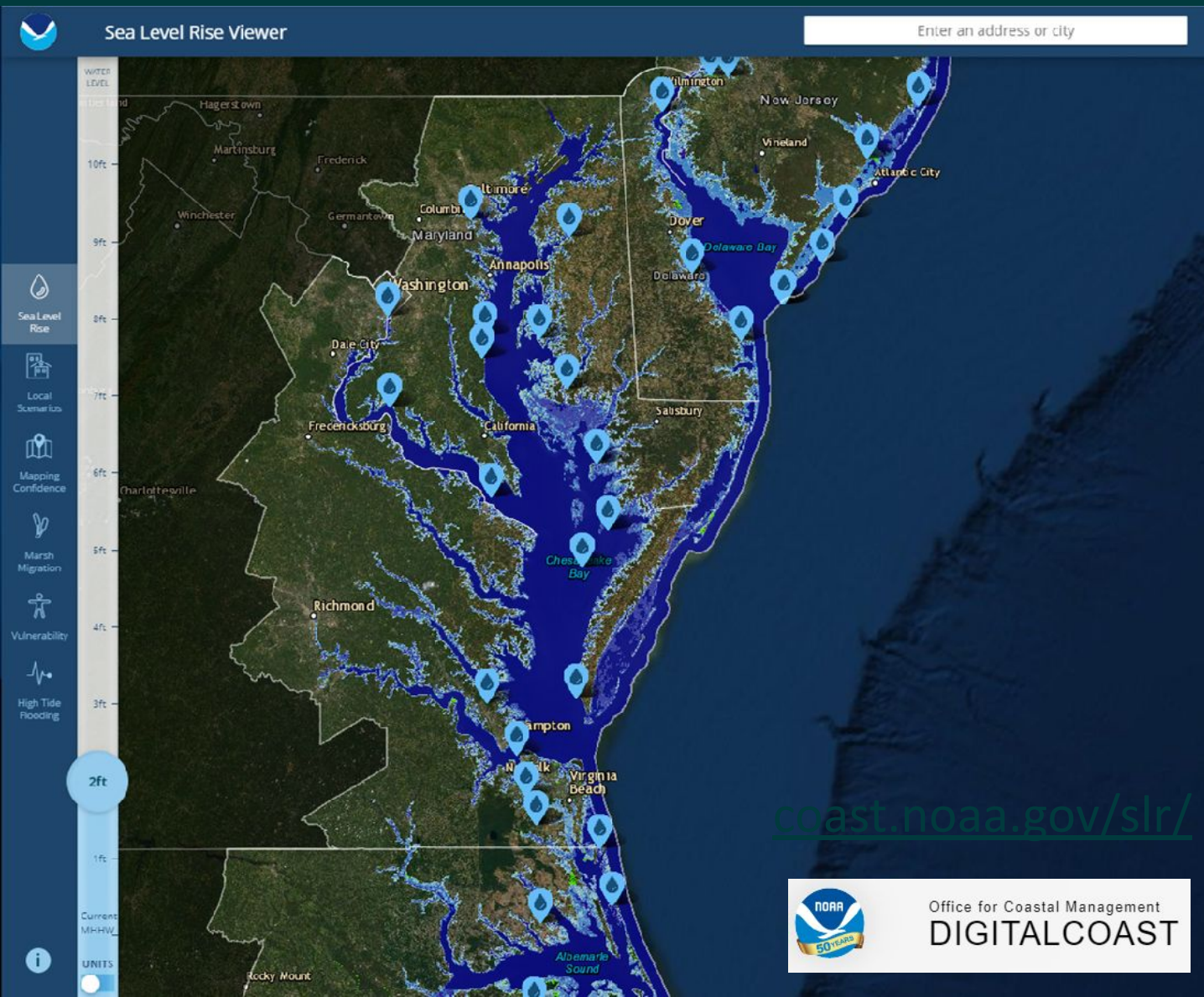
Examples of CRWG efforts with DEIJ considerations

- The Climate Resiliency Workgroup (CRWG) partnered with the Local Government Advisory Committee and hosted a forum on flooding that included discussions involving climate and environmental justice.
- CRWG is supporting the Habitat Goal Implementation Team's project, "Targeted outreach for green infrastructure in vulnerable areas." Used the Environmental Justice and Equity Dashboard to help with the selection of communities to work with that are vulnerable to sea level rise impacts.





New Efforts - Habitats and Communities



- CRWG supports projects aimed at understanding sea level rise effects to habitats and communities.
- Partnered with Wetlands Workgroup on upcoming GIT-funded project, “Synthesis of Shoreline, Sea Level Rise, and Marsh Migration Data for Wetland Targeting”
- CRWG interested in supporting capacity-building for communities to implement natural/green infrastructure projects that could also help with flood mitigation.

coast.noaa.gov/slr/



Indicators to Help with Adaptation Decision-Making



Examples:





Climate Resilience Scorecard

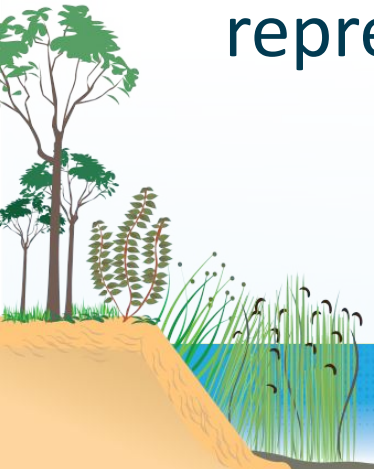
- Funded by EPA through Chesapeake Bay Program (GIT-Funding)
- Working with RAND Corp. to develop a scorecard for tracking climate resilience activities of communities that are relevant to goals in the Chesapeake Bay Watershed Agreement (water quality, habitats, fisheries, etc.)
- Exploring the inclusion of a social equitable planning metric





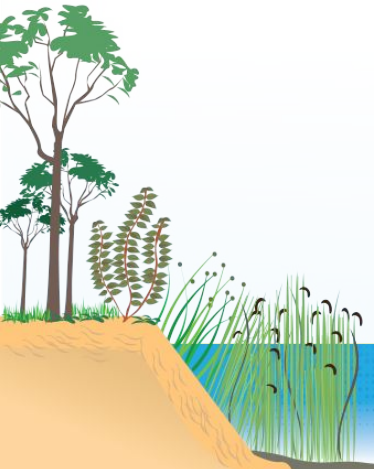
Discussion Questions

- How can we connect social equitable planning to climate actions involving natural resources (e.g., wetlands, fisheries, forests)?
- How can we build trust with underrepresented communities to participate in climate adaptation efforts?
- What organizations should we reach out to when looking for DEIJ representation in the Climate Resiliency Workgroup?



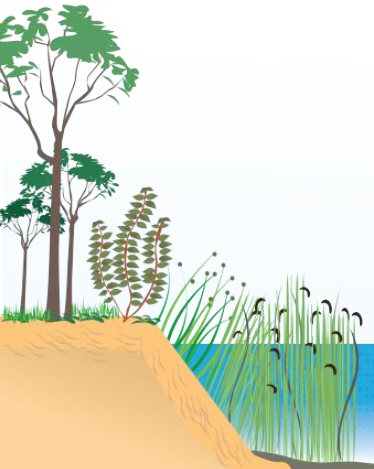


How can we connect social equitable planning to climate actions involving natural resources?



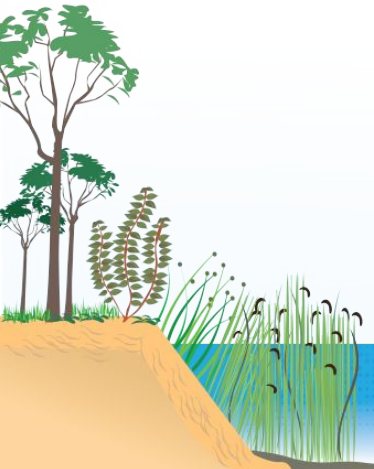


How can we build trust with underrepresented communities to participate in climate adaptation efforts?





What organizations should we reach out to for DEIJ representation in the CRWG?





Contact Information

Julie Reichert-Nguyen
julie.reichert-nguyen@noaa.gov

Chesapeake Bay Program
Climate Resiliency Workgroup
www.chesapeakebay.net/who/group/climate_change_workgroup

