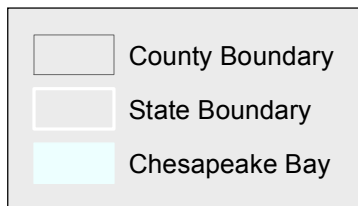
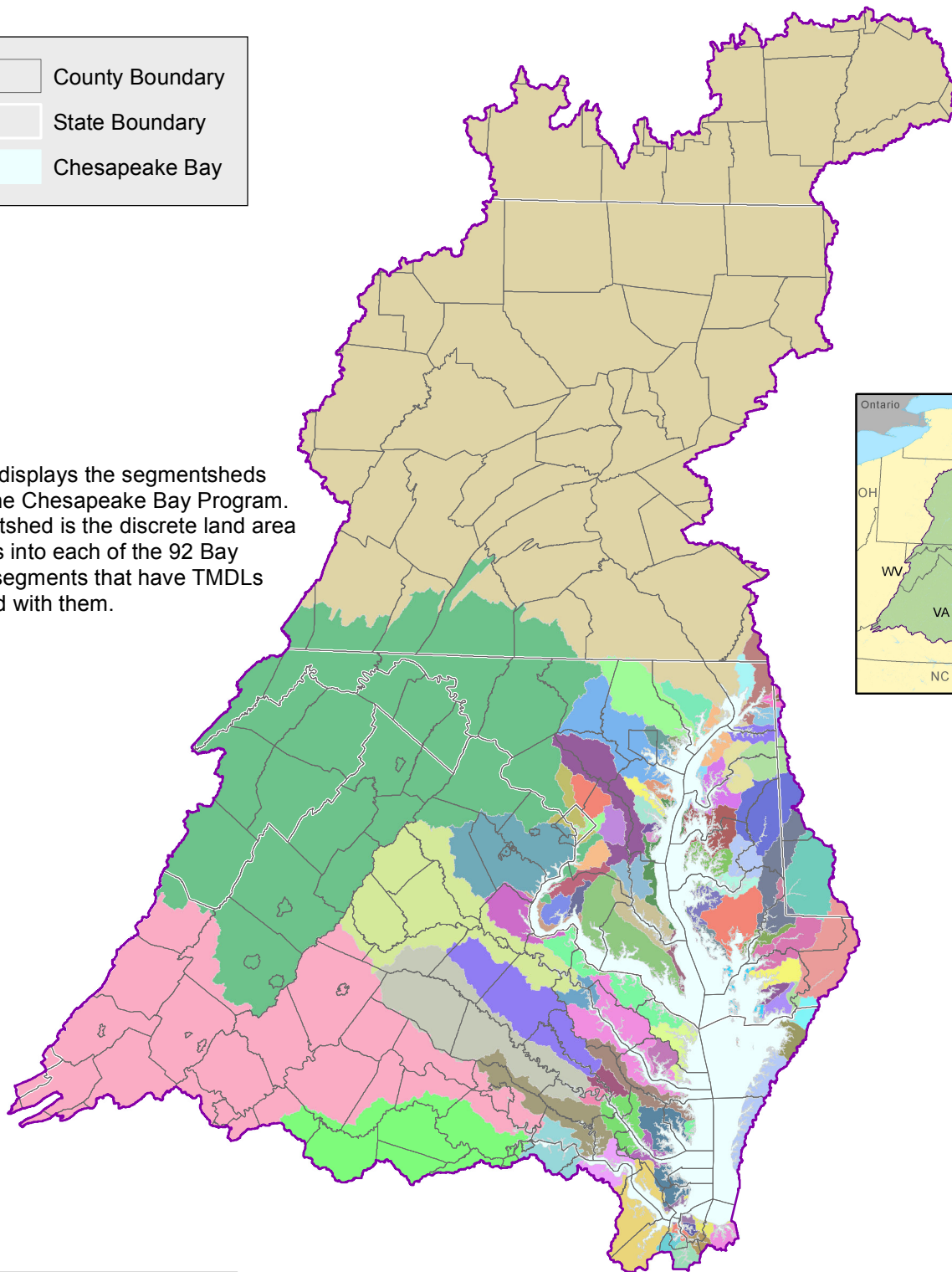


Chesapeake Bay Segmentsheds with Counties



This map displays the segmentsheds used by the Chesapeake Bay Program. A segmentshed is the discrete land area that drains into each of the 92 Bay Program segments that have TMDLs associated with them.



Data Sources: Chesapeake Bay Program
For more information, visit www.chesapeakebay.net
Disclaimer: www.chesapeakebay.net/termsfuse.htm

