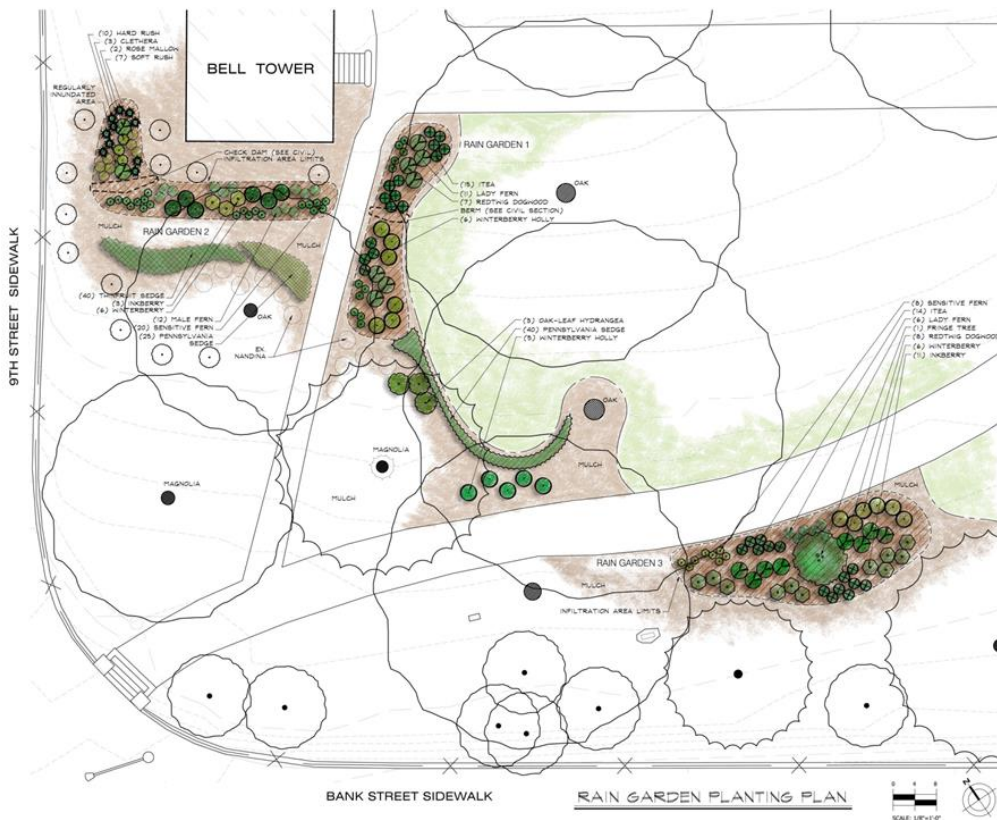


Tour Guide – Bell Tower Rain Gardens

The three rain gardens located near the historic Bell Tower serve several purposes. In addition to managing stormwater runoff from adjacent brick walkways and the roof surfaces, they also reduce the soil compaction and turf damage previously caused by heavy foot traffic.

The two rain gardens closest to the Bell Tower are provided with underdrain piping, which discharges into the rainwater harvesting system by the fountain. The rain garden closest to Bank St. did not require an underdrain system. Annual runoff reduction from these features is approximately 20,000 gallons annually.



Design Information:

Rain Gardens 1 & 2

- 24" Bioretention Media
- 17" Stone Drainage Layer
- 8" Dia. Underdrain/Overflow
- Combined Drainage Area is Approximately 16,000 SF

Note – an existing spring (~1 gpm) flows into Rain Garden 1.

Rain Garden 3

- 24" Bioretention Media
- 15" Stone Drainage Layer
- No Underdrain
- Surface Overflow (no piping)
- Drainage Area is Approximately 2,000 SF



CIVIL & ENVIRONMENTAL SERVICES, LLC
SITE PLANNING & DESIGN - ENVIRONMENTAL CONSULTING
1181 BAYVIEW LANE - FALLS CHURCH, VIRGINIA 22046
(703) 361-1443 • WWW.SUSTAINABLE-SITES.COM

GREENING VIRGINIA'S CAPITOL
BELL TOWER RAIN GARDENS

More Information:

Chris Sonne, PE, Project Designer
Civil & Environmental Services, LLC
(434) 361-1443 • chris@sustainable-sites.com
www.sustainable-sites.com

