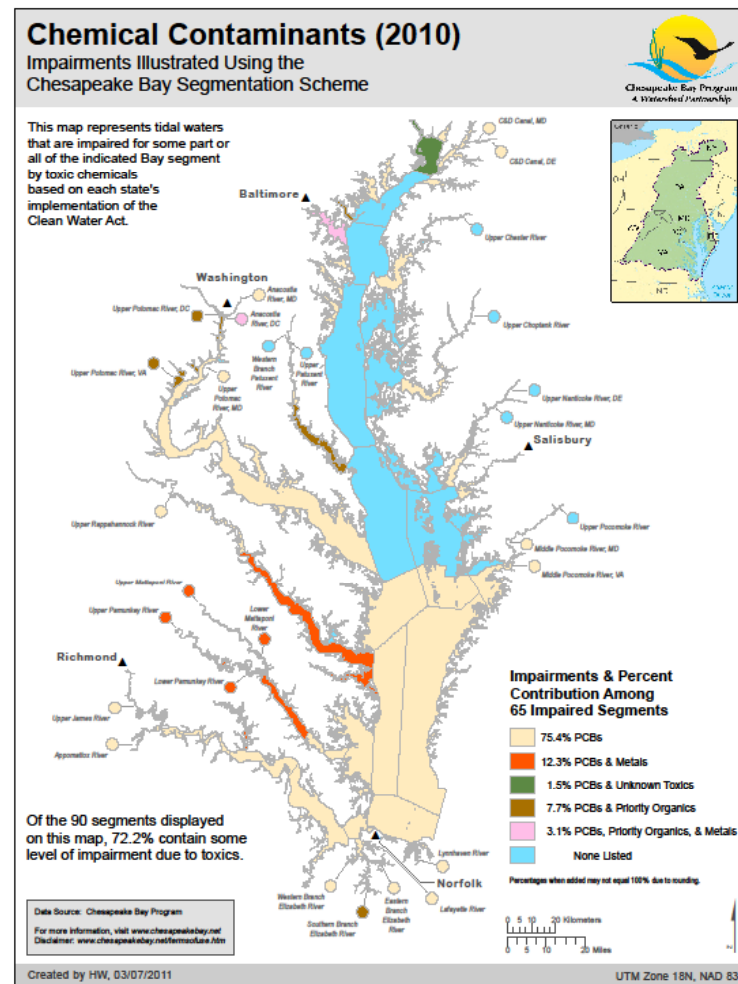


Extent and Severity of Toxic Contaminants in Chesapeake Bay and the Watershed

Scott Phillips (USGS) and Greg Allen (EPA)

Report and Objectives

- Contaminants effect fish and wildlife
- CBP Toxics 2000
- EO Strategy
- Summary Report released
 - Extent and severity
 - Biological effects
- Used by EPA and CBP to consider:
 - Goals for reducing contaminants
 - Monitoring and research





Contaminant Groups

- Polychlorinated biphenyls
 - Dioxins and Furans
 - Polycyclic aromatic hydrocarbons
 - Petroleum hydrocarbons
 - Pesticides
 - Pharmaceuticals
 - Household and Personal Care Products
 - Polybrominated diphenyl ether Flame Retardants
 - Biogenic hormones
 - Metals and Metalloids
-
- Effects on fish and wildlife

Assessment Approach

- Define extent and severity
 - Widespread, localized, or uncertain
 - Information used and limitations
- Extent
 - Widespread: throughout watershed
 - Localized: limited watersheds
- Severity
 - Widespread: impairments listed at many locations
 - Localized: few locations
- Uncertain: lack of monitoring or standards



- Widespread:
 - PCBs, PAHs, Mercury
 - some herbicides (atrazine, simazine, metochlor, and their degradation products)
- Localized:
 - Dioxins/furans, petroleum hydrocarbons
 - Insecticides (aldrin, chlordane, dieldrin, DDT/DDE, heptachlor epoxide, mirex)
 - Metals: Al, Cr, Fe, Pb, Mn, Zn
- Uncertain: pharmaceuticals, care products, flame retardants, some pesticides, hormones



Severity

Widespread: PCBs and mercury

Localized:

- dioxins/furans, PAHs, petroleum,
- Insecticides: aldrin, chlordane, dieldrin, DDT/DDE, heptachlor epoxide, mirex
- Metals: Al, Cr, Fe, Pb, Mn, Zn

Uncertain:

- pharmaceuticals, care products, flame retardants, biogenic hormones
- herbicides (atrazine, simazine, metochlor, and their degradation products)

Biological Effects

- Degraded fish health
 - Infections and parasites
 - Feminization
 - Reduced reproduction
 - Tumors
- Wildlife: Reproductive impairment in water birds
 - Eggshell thinning (DDE)
 - Embryo lethality (pesticides)
 - Hatching success (PCBs)





Monitoring and Research Gaps

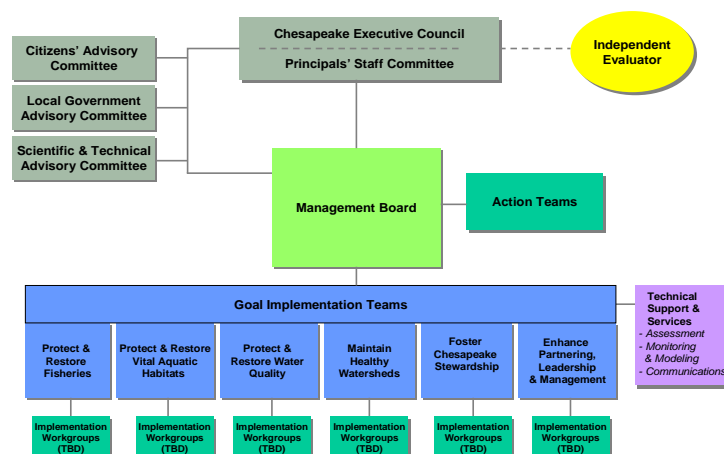
- Monitoring to better define extent
 - Groups with “uncertain” or “localized” occurrence
- Research-Severity
 - Exposure studies
 - Multiple contaminants and stressors
 - Effects of newer contaminants
 - Sources, pathways and exposure

Need for Partnership Goal

DNR PHOTO BY
ANGEL BOLINGER



- Required in CBP reauthorization
- Widespread extent and severity of contaminants
- Current controls producing minimal reductions
- Effects other CBP goals (fish, habitat, water quality) and human health
- Benefit from coordination





Next Steps

- Next steps
 - CBP consider toxic contaminants in future efforts
 - WQ GIT, MB, PSC, EC
 - STAR meeting on enhancing monitoring and research