

Launching the Urban BMP Panels



Panel 1: Stormwater Retrofits

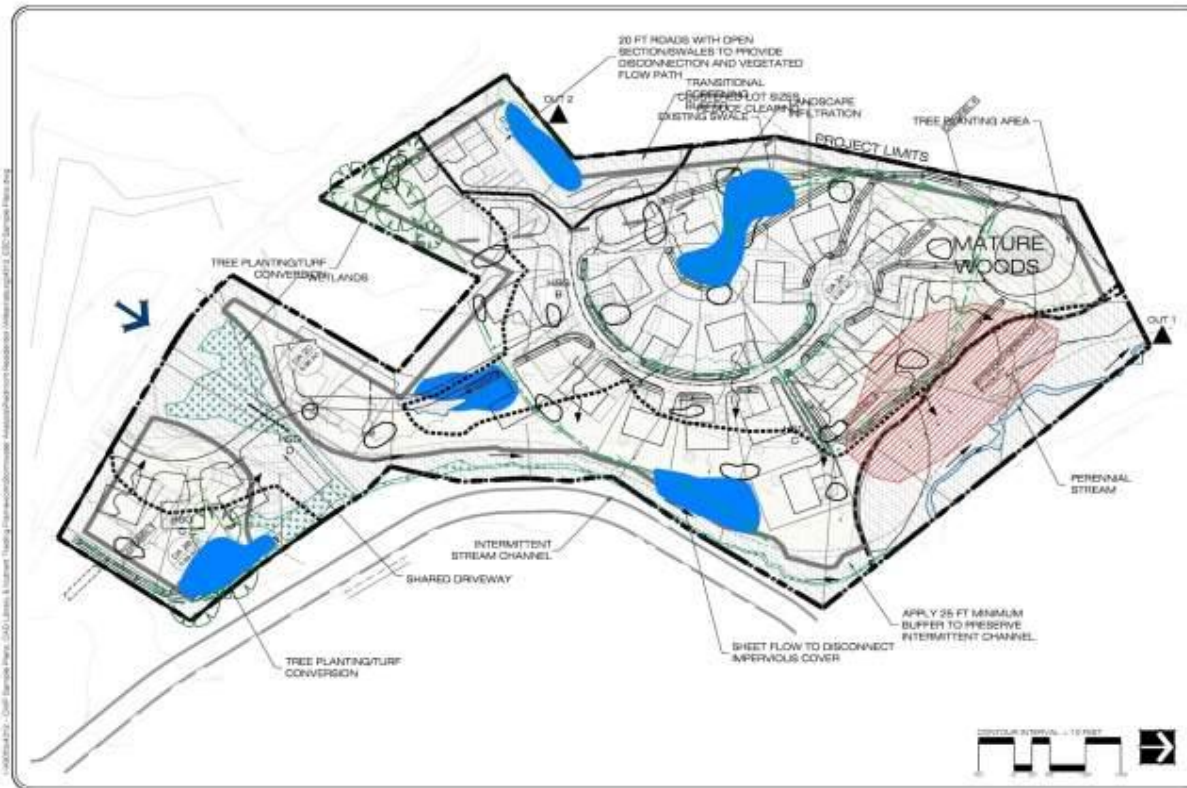
- Six broad retrofit classes
 - New retrofit facilities,
 - BMP conversions (e.g., a dry ED pond to a constructed wetland)
 - Enhance design or volume of existing BMPs
 - Green street retrofits
 - On-site LID retrofits
 - Maintenance upgrades

Retrofit Panel Schedule

- First Call in Mid-October (scoping and critique of recommended options in TB 9)
- Second call in November (discuss retrofit reporting, tracking, and verification methods)
- Report back to USWG in December

Panel 2

Dealing w/ Composite LID/ESD/RR practices at a site



Scope of Panel Efforts

- Each state evaluate its own performance standards using the acceptable load approach or alternate method (see TB 9)
- Work out process for defining whether they achieve nutrient neutrality for new development or actual redevelopment credits
- Discuss procedures when local sites do not fully comply.
- Discuss local tracking, reporting and verification protocols

Proposed Schedule for Composite Panel

- Early October: Research packet to panel
- Late October: Scoping Call
- December: Second Call
- January: Report back to USWG

Stream Restoration Panel



- Dec 1, 2011: U of MD Literature Review completed
- Panel to supply missing grey/black literature in December
- Meeting to review metadata analysis (early 2002)
- Panel to review qualifying conditions in Spring
- U of MD to propose decision tool by June of 2012
- Panel to make final recommendation summer 2012

Interim Stream Restoration Rates



Removal rate per Linear foot of Qualifying Stream Restoration			
Source	TN	TP	TSS
CBP 2005 N=1	0.02 lbs	0.0035	2.55 lbs
CSN 2011 N=6	0.20 lbs	0.068 lbs	310 lbs

Urban Nutrient Management Panel



- Evaluate effect of P fertilizer bans, nitrogen fertilizer reductions and urban lawn nutrient management
- Focus on qualifying conditions and verification methods for NFR and ULNW
- Need to coordinate with agricultural nutrient management expert panel
- Rachel Streusand, EPA will be helping out on this panel

Looking for Nominations

- State cooperative extension agencies
- Turf and/or soil science folks
- Stormwater source area sampling
Fertilizer industry reps ?
- Local outreach experts
- Chris Brosch, EPA Modeling team
- Get panel in place by December