

Update on CBPO Urban Stormwater BMP Work and its relation to trading and offsets

Tom Schueler
Chesapeake Stormwater Network
www.chesapeakestormwater.net





Key Points

- Urban BMP Expert Panel Update
- Start of Urban BMP Cost Study
- Update of State Stormwater Offset Programs
- Urban BMP Verification Issues

Current Expert Panels

- Stormwater Retrofits
- New State Stormwater Standards
- Urban Fertilizer Management
- Stream Restoration

Stormwater Retrofits

- Broad group of practices:
 - New retrofit facilities
 - BMP conversions (e.g., a dry ED pond to a constructed wetland)
 - Enhance design or volume of existing BMPs
 - Green street retrofits
 - On-site LID retrofits
 - BMP Restoration

Panel 2

New State Stormwater Performance Standards



Applies to Both New Development and Redevelopment Projects.

Panel 3. Urban Fertilizer Management



- Effect of Recent State-wide Fertilizer P Bans
- Effect of Local Outreach Programs on Reducing N Fertilization
- Reduced Use of N on Public Land

4. Stream Restoration Panel



- Updating old rates
- Defining Qualifying projects
- Reporting, tracking and verification

SUMMER 2012 ?

Stream Restoration Removal Rate



Removal rate per Linear foot of Qualifying Stream Restoration			
Source	TN	TP	TSS
CBP 2005 N=1	0.02 lbs	0.0035	2.55 lbs
CSN 2011 N=6	0.20 lbs	0.068 lbs	310 lbs
2012	Expert Panel		

Future Expert Panels

- Enhanced E&S Controls
- Elimination of Illicit Discharges
- Impervious Cover Disconnection
- Urban Tree Planting
- Urban Reforestation/Buffer Upgrades

CSN Urban BMP Cost Study 2012 to 2013

- Street Sweeping
- Stream Restoration
- Bioretention
- Urban Fertilizer Outreach

Update on State Stormwater Offset Programs

- All Bay states have developed or adopting stormwater offset programs
- Most involve offset fees to build retrofits
- Most apply to redevelopment, although some also apply to new development projects
- Common currency is \$/pound of P or \$ per cubic foot of runoff

The Stormwater Version of the Price is Right Show



For the technical assumptions for the following cost projections,
please consult Technical Bulletin No. 5

What is the Cost to Treat:

\$191,000



One Acre of IC of Urban Redevelopment

\$31,700



One acre of IC at Pre-ESD
Greenfield Development

\$46,500



One acre of IC at Greenfield
Development to ESD

\$32,500



One Acre of IC with Storage Retrofits

What is the Cost to Treat:

\$167,100



One acre IC with Green Streets

\$35,600



Stream Restoration in
length equivalent to one
acre IC, expressed in terms
on nutrient load

Urban BMP Verification

- Working on 14 Broad Principles for Reporting, Tracking and verifying Urban BMPs
- Working on more detailed verification protocols for each approved urban BMP
- Double Counting Issue

12 Special Procedures for Urban BMPs Used for Offsets, Mitigation and Trading.

Some urban BMPs are built to offset, compensate or otherwise mitigate for impacts caused by development elsewhere in the watershed.

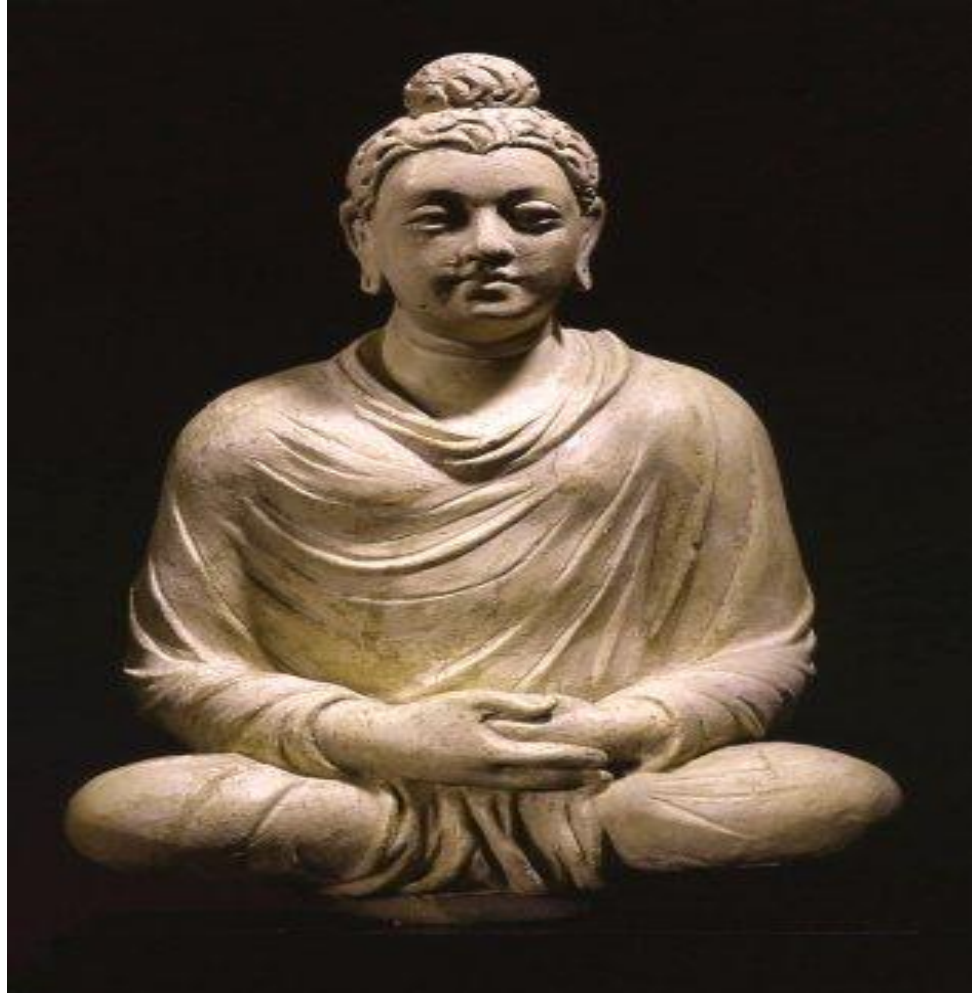
Examples include stream restoration mitigation and stormwater retrofit offsets when full compliance with stormwater performance standards is not possible at a new development site.

In other cases, urban BMPs may be built for purposes of trading nutrient credits within a community or a state. Special procedures need to be developed in both cases to prevent double counting of BMPs.

States and localities may elect to require more frequent BMP field inspection for these types of projects to assure they are meeting their intended nutrient reduction objectives. T

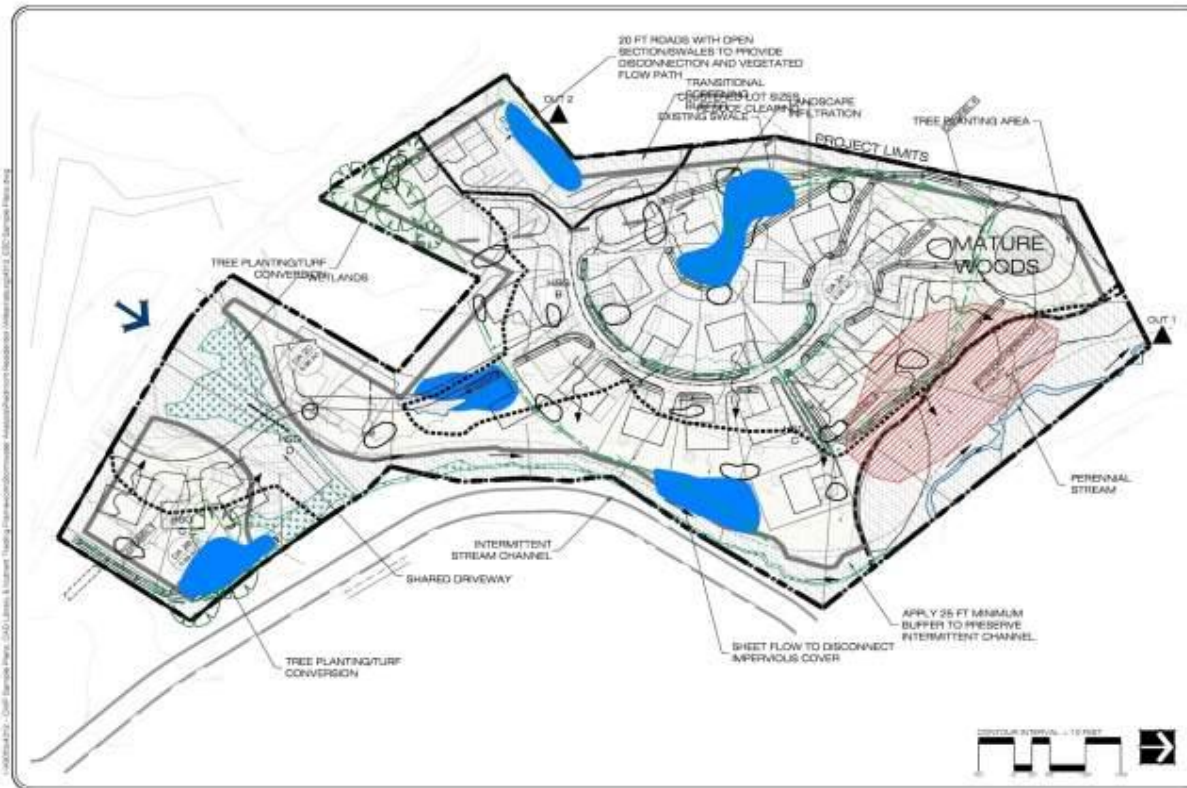
The Work Group will coordinate with the Trading and Offsets Work Group to develop special verification procedures for this category of BMPs.

Q & A



Panel 2

Dealing w/ Composite LID/ESD/RR practices at a site



Scope of Panel Efforts

- Each state evaluate its own performance standards using the acceptable load approach or alternate method (see TB 9)
- Work out process for defining whether they achieve nutrient neutrality for new development or actual redevelopment credits
- Discuss procedures when local sites do not fully comply.
- Discuss local tracking, reporting and verification protocols

Urban Nutrient Management Panel



- Evaluate effect of P fertilizer bans, nitrogen fertilizer reductions and urban lawn nutrient management
- Focus on qualifying conditions and verification methods for NFR and ULNW
- Need to coordinate with agricultural nutrient management expert panel
- Rachel Streusand, EPA will be helping out on this panel