

Prince George's County

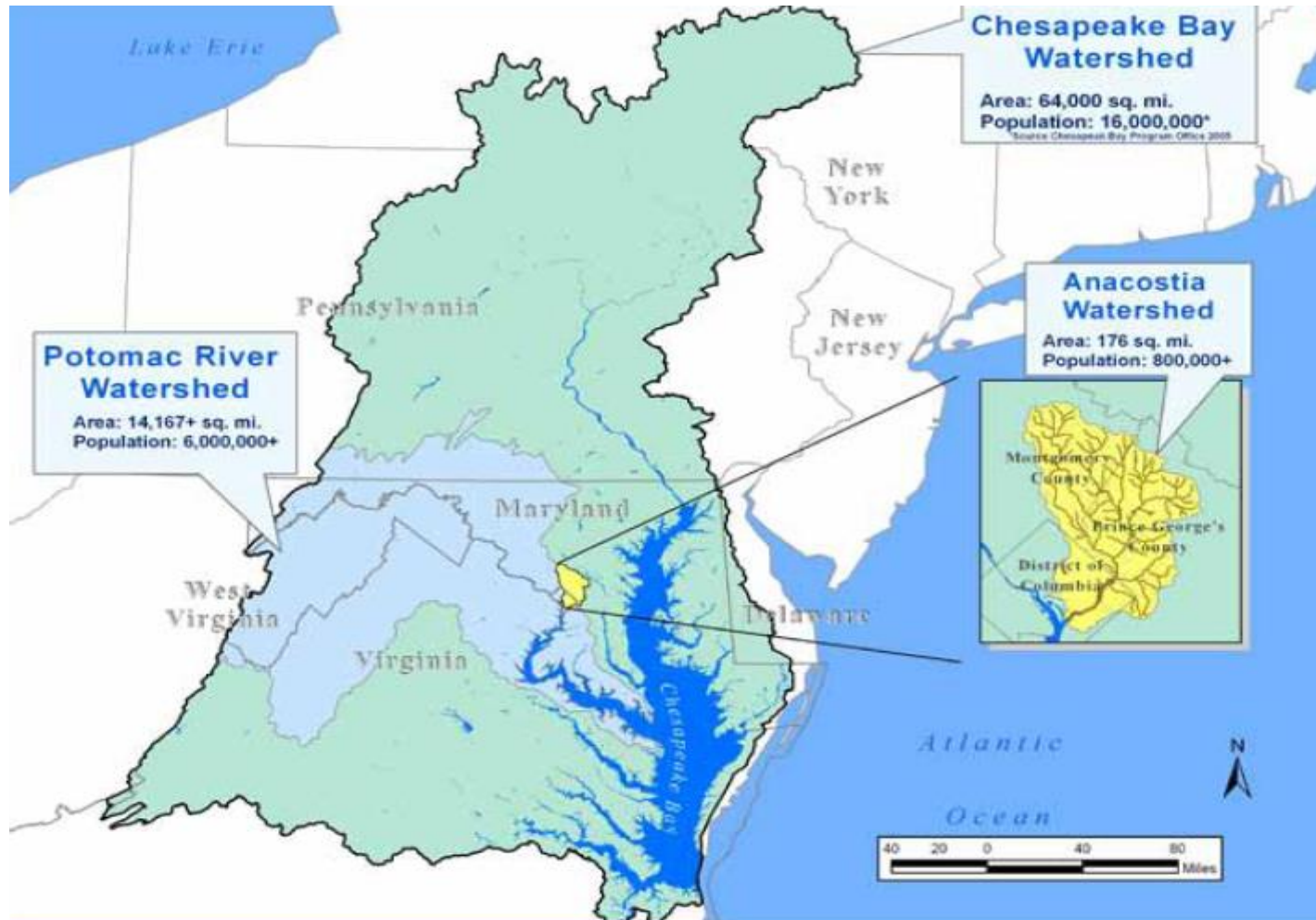
# Clean Water Program

*Environmental Restoration  
& Economic Opportunity*



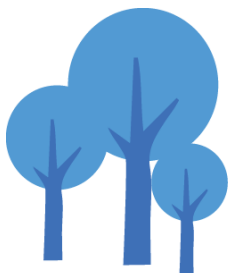
# CHESEAPEAKE BAY WATERSHED

“YOU ARE HERE”



# PRINCE GEORGE'S COUNTY, MD

- Population: 900,000
- 500 square miles
- Urban, Suburban, Rural
- Three major rivers
- Birthplace of Low Impact Development (LID)







# WHAT IS POLLUTED RUNOFF?





























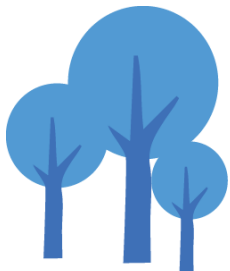


**Polluted Runoff  
Pipeline**



# IMPACTS

TRASH, NITROGEN & PHOSPHORUS



STORMWATER MANAGEMENT DIVISION



# IMPACTS

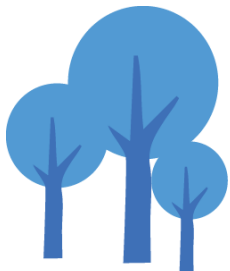
## TRASH, NITROGEN & PHOSPHORUS



STORMWATER MANAGEMENT DIVISION

# IMPACTS

## EROSION & SEDIMENTATION

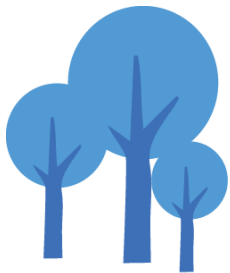


STORMWATER MANAGEMENT DIVISION



# IMPACTS

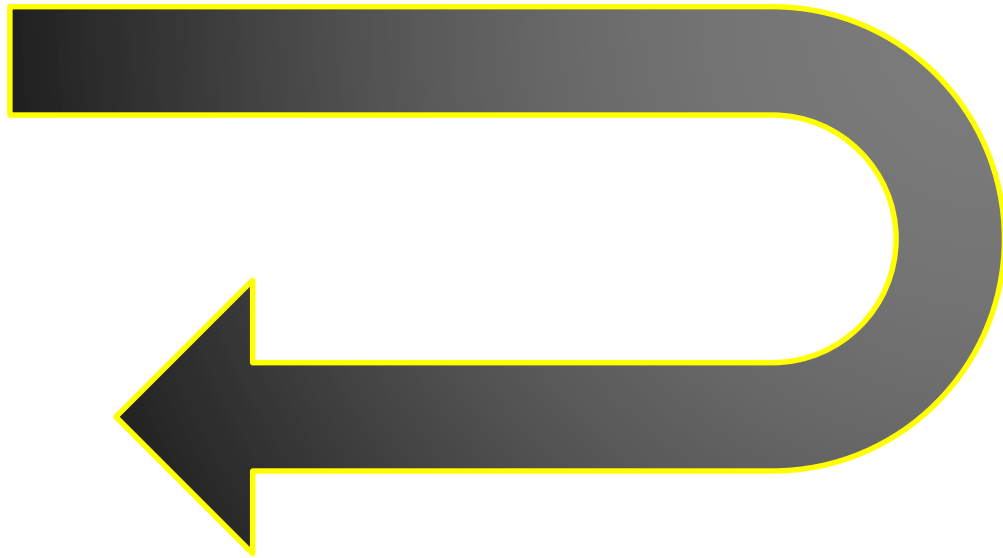
## FISH KILLS, HEALTH ADVISORIES



STORMWATER MANAGEMENT DIVISION



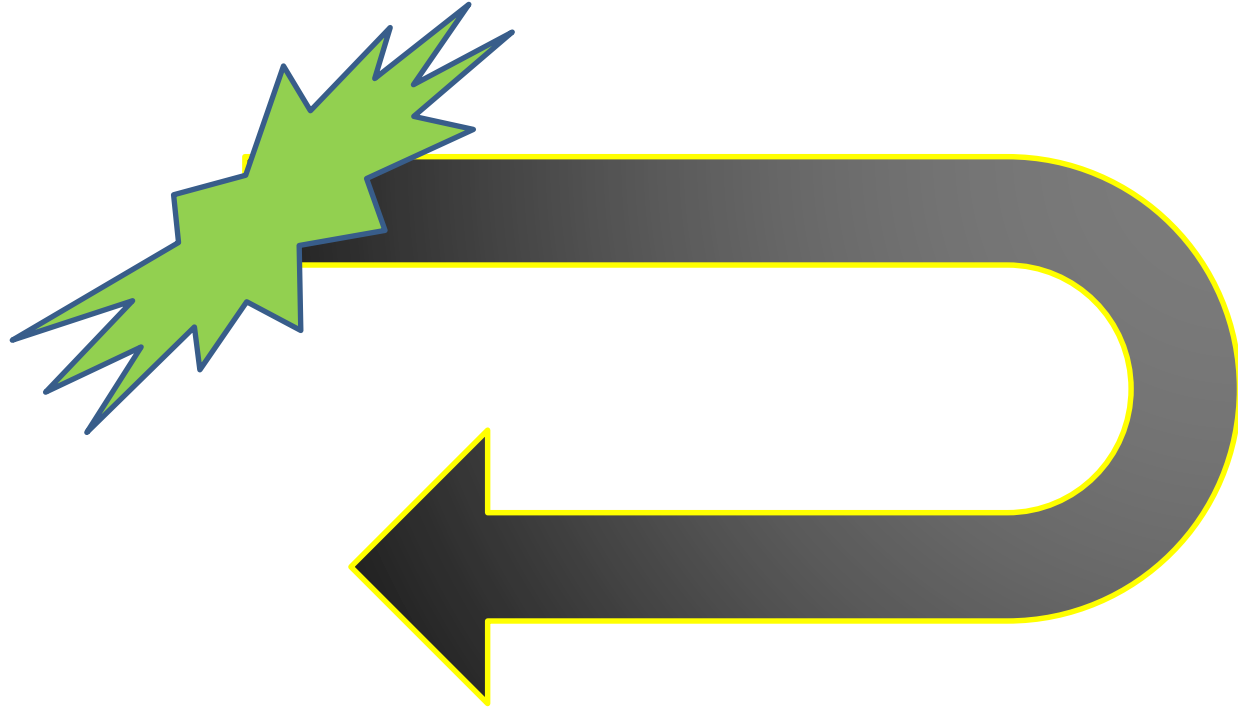
# NEW CLEAN WATER ACT MANDATES





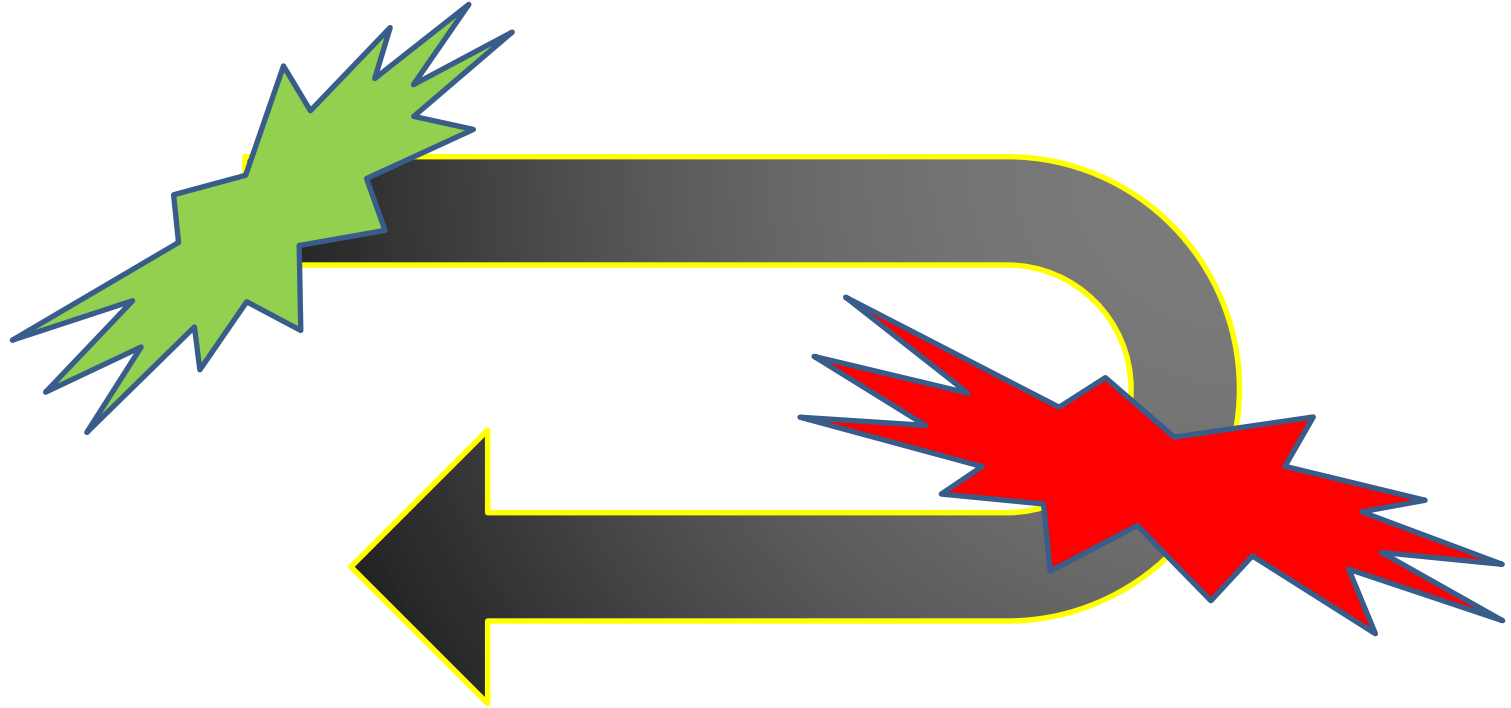
# NEW CLEAN WATER ACT MANDATES

REDUCE



# NEW CLEAN WATER ACT MANDATES

REDUCE AND RETROFIT





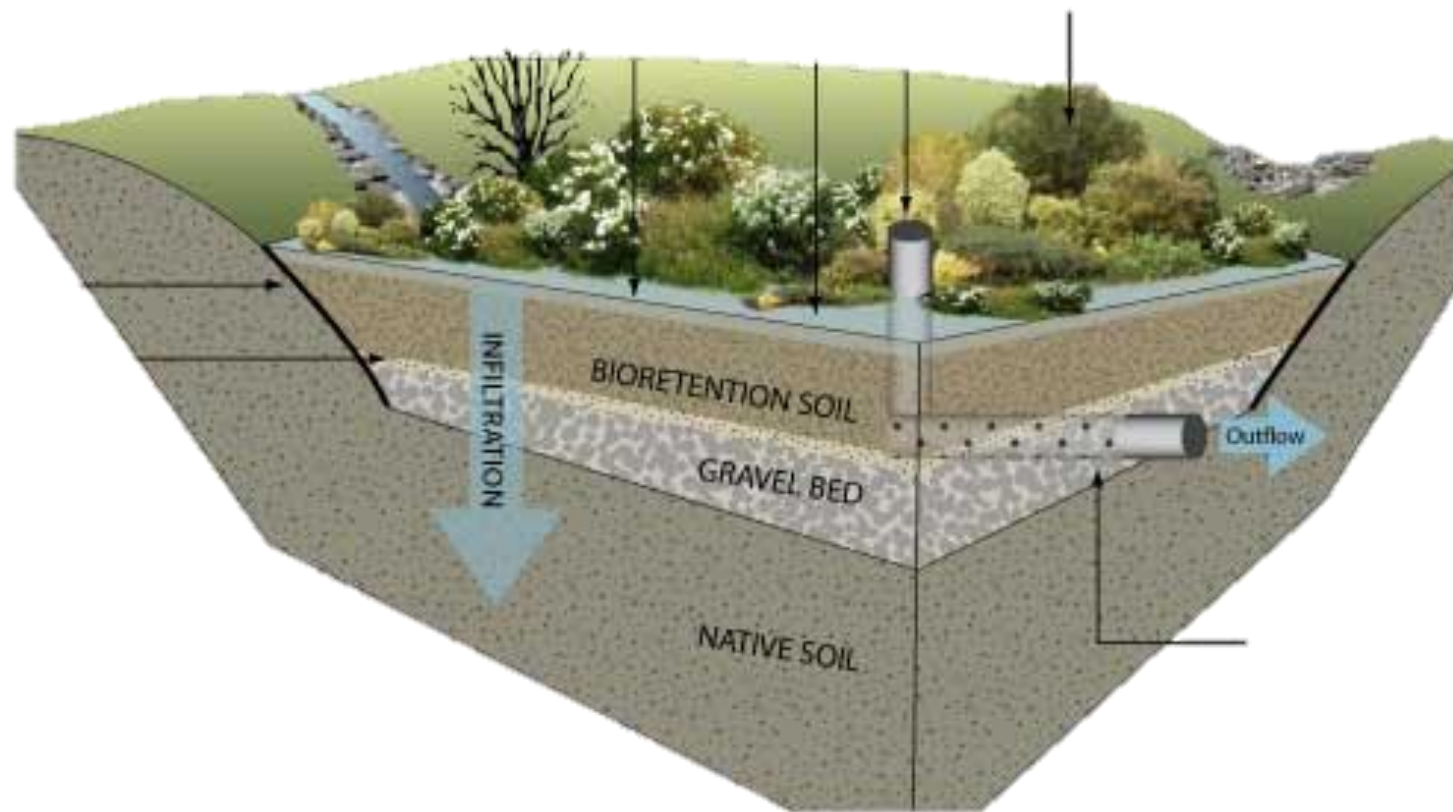














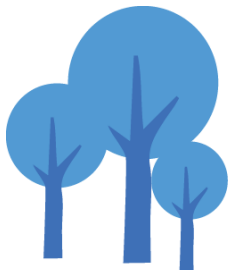






# CLEAN WATER THROUGH FILTRATION

## TREEBOX RAINGARDENS

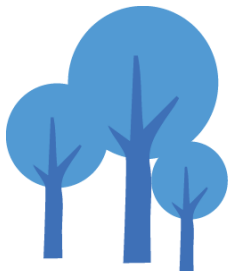


STORM WATER MANAGEMENT DIVISION



# CLEAN WATER THROUGH FILTRATION

## TREEBOX RAINGARDENS

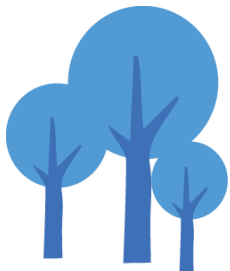


STORMWATER MANAGEMENT DIVISION



# CLEAN WATER THROUGH FILTRATION

## BIOSWALES

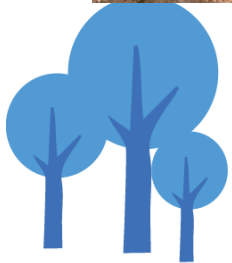


STORM WATER MANAGEMENT DIVISION



# CLEAN WATER THROUGH RETROFITS

## PERMEABLE ASPHALT



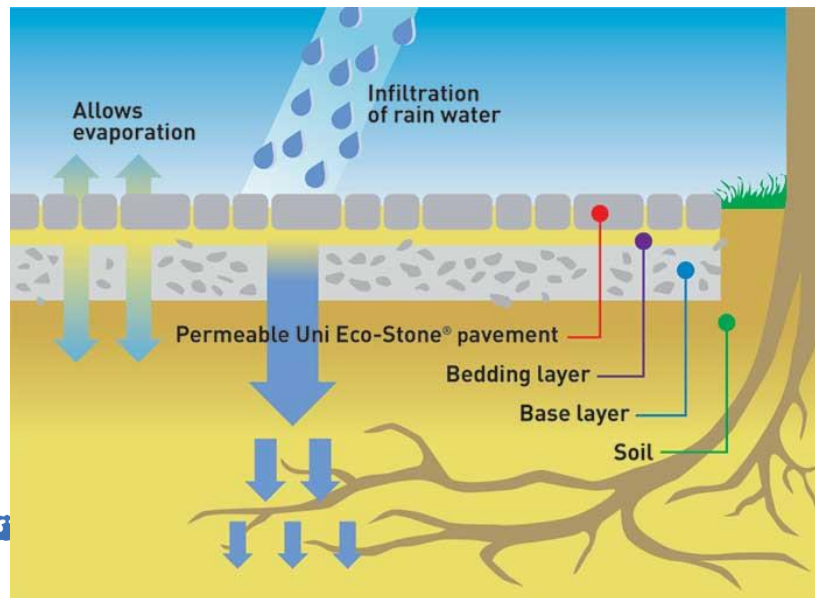
STORMWATER MANAGEMENT DIVISION





# CLEAN WATER THROUGH FILTRATION

## PERMEABLE PAVERS



# NEW CLEAN WATER ACT MANDATES

## EPA SETS AMBITIOUS GOALS

### Mandate for Prince George's County

- Build filters to treat 15,000 impervious acres by 2025
  - Approximately 46,000 stormwater filtration devices
  - Will cost approximately \$1.2 billion
- Pay for this with a dedicated funding source (Clean Water Act Fee)

### The Prince George's Model: *Make this mandate work for us*

- Clean our waters
- Revitalize older communities
- Lead with innovation
- Grow local economy
- Partner as much as possible



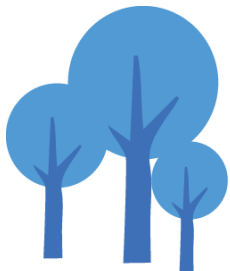
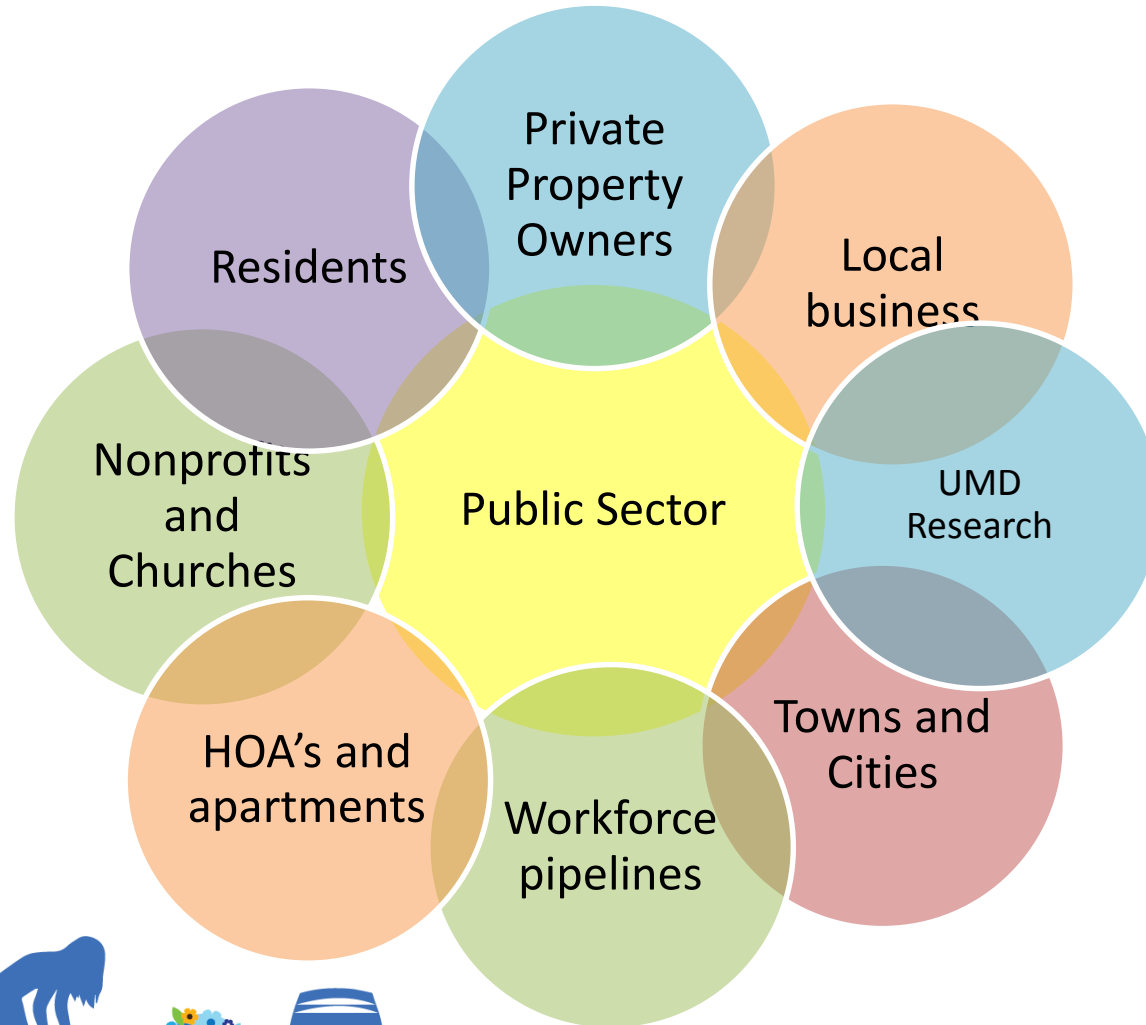


# WE ARE NOT ENOUGH

Public Sector



# WE MUST PARTNER

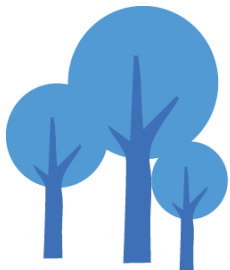




# KEY PARTNERS:

## PRIVATE PROPERTY OWNERS

Our **Rain Check** Program provides up to **\$3 Million** in cash Rebates, Grants and technical assistance available for private property owners to install stormwater management practices on their property to reduce stormwater runoff pollution.

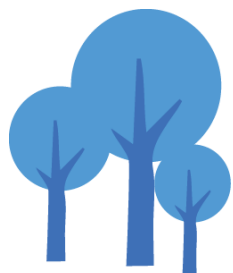


STORMWATER MANAGEMENT DIVISION



# KEY PARTNERS: SCHOOLS

Our 200 school properties can help us meet our retrofit acreage goals while we help them meet their environmental literacy goals, turning raingardens into outdoor classrooms.



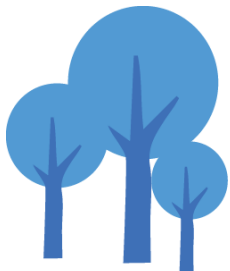
STORMWATER MANAGEMENT DIVISION



# KEY PARTNERS: CHURCHES AND NONPROFITS

## Alternative Compliance Program

1. **Easements:** Up to 50% reduction in fee
2. **Green Teams and Green Ministries:** Up to 25% reduction
3. **Green Housekeeping:** Up to 25% reduction



STORM WATER MANAGEMENT DIVISION





# KEY PARTNER: PRIVATE SECTOR

## Public Private Partnership (P3) for Efficiency

- Enhance strengths and mitigate weaknesses of the other
- Better, Greener, Faster: Efficiencies in procurement, design, construction & maintenance



# THE CLEAN WATER PARTNERSHIP



Corvias®



Clean  
Water  
Utility Fee

## Master Program Agreement

*County Oversight,  
Partner Management*

### Community Partnerships

*Universities  
Faith & Nonprofit  
Environmental  
Job Training  
Schools  
Mentoring  
Towns & Cities*

### Construction

*Subcontractors  
Suppliers  
Materials  
Workers  
Inspectors  
Drivers*

### Maintenance

*Subcontractors  
Suppliers  
Services  
Inspectors  
Construction  
Labors  
Equipment*

Job creation

# CLEAN WATER PARTNERSHIP

## LOCAL INVESTMENT, JOBS, BUSINESS, DEVELOPMENT, COMMUNITY WEALTH

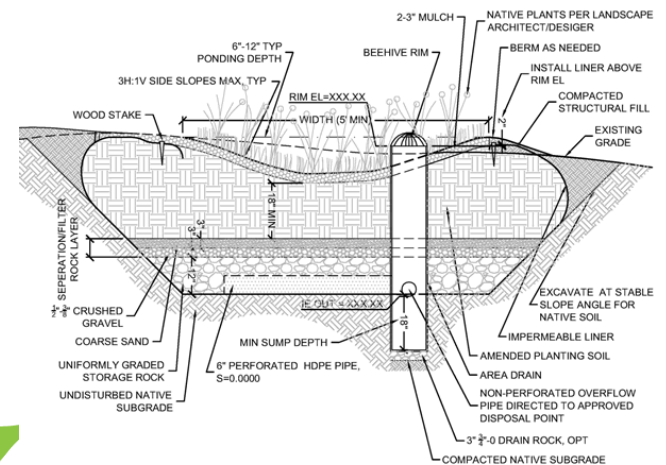
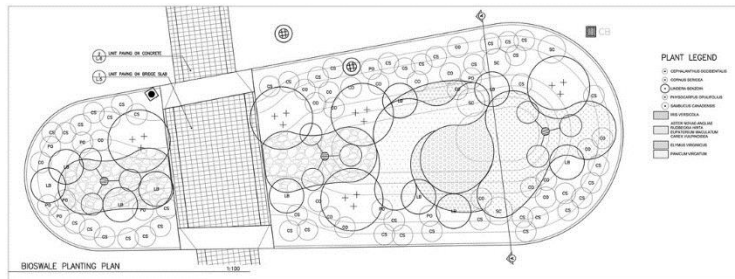
- Construction: 3 years to retrofit 2,000 acres
- Maintenance: 30 years
- Manage \$100M in contracting
  - Pay for performance:
    - Time & budget
    - Socio Economic –
      - 40% County procurement
      - Local business mentorship and development
- *Will “race” to 2000 acres vs DoE Capital Projects team*





# MAJOR ECONOMIC DRIVER

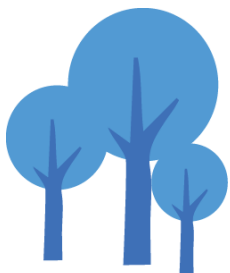
## DESIGN AND ENGINEERING



STORMWATER MANAGEMENT DIVISION

# MAJOR ECONOMIC DRIVER

## CONSTRUCTION



STORMWATER MANAGEMENT DIVISION





# MAJOR ECONOMIC DRIVER

## MAINTENANCE



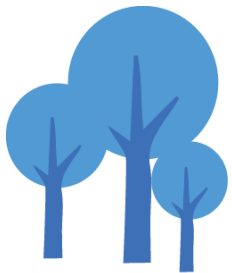
STORMWATER MANAGEMENT DIVISION





# MAJOR ECONOMIC DRIVER

## SUPPLIERS



STORMWATER MANAGEMENT DIVISION



# WORKFORCE PIPELINES

TRAINING IS CRITICAL

- Community College
- Workforce Centers
- Nonprofits
- Labor
- Private Sector
- Universities





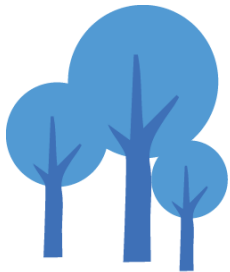
# WORKFORCE PIPELINES

## STORMWATER FACILITY MAINTENANCE COURSE



# WORKFORCE PIPELINES

## LANDSCAPE CONTRACTOR COURSE



STORMWATER MANAGEMENT DIVISION



# SO....

- We have to clean up our runoff pollution
- New EPA mandates require major infrastructure investments to do it
- We must make this mandate work for us: it is an unprecedented opportunity to invest in our own communities
- We must partner to leverage the strengths of others
- We will beautify our neighborhoods, clean our environment, and put people to work





Thank you.





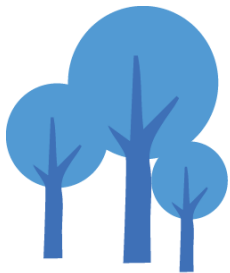
# NEW CLEAN WATER ACT MANDATES

MUST ADDRESS POLLUTED RUNOFF



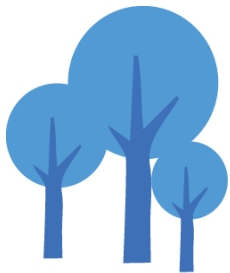
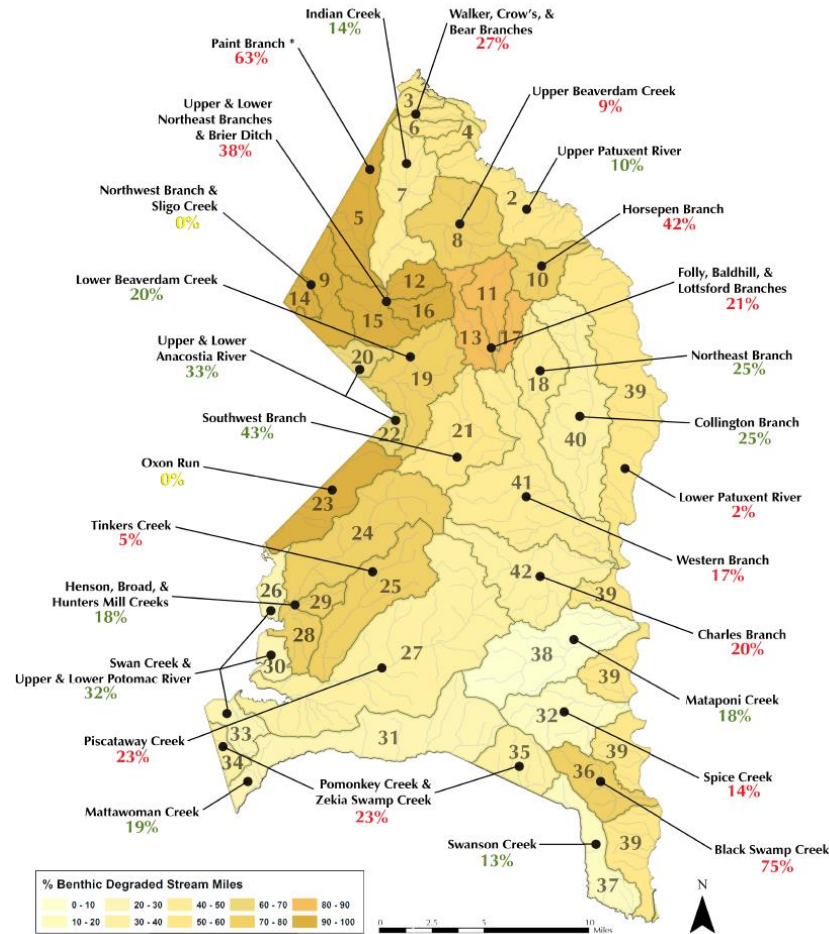
# NEIGHBORHOOD POLLUTION INCREASING

MUST ADDRESS POLLUTED RUNOFF



STORM WATER MANAGEMENT DIVISION

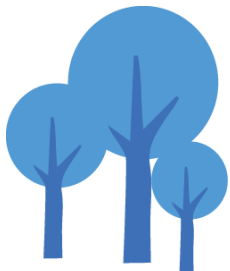
# NEW CLEAN WATER ACT MANDATES





# NEIGHBORHOOD POLLUTION INCREASING

MUST ADDRESS POLLUTED RUNOFF



STORM WATER MANAGEMENT DIVISION

