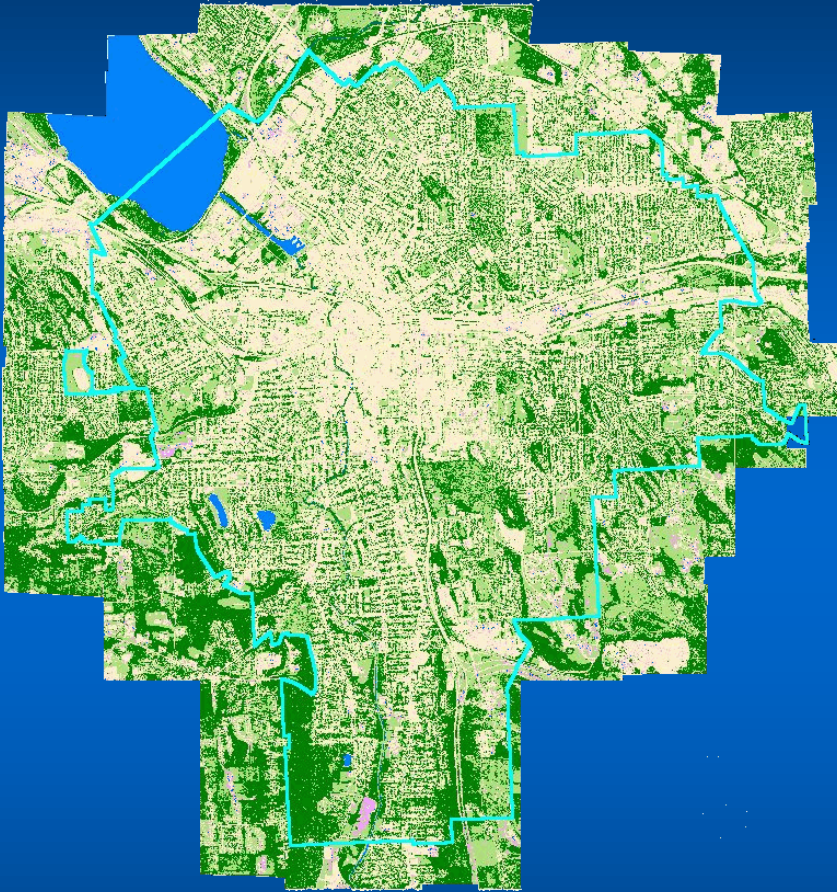


# Assessing Urban Forests



**Top-down**



**Bottom-up**



# Assessing Urban Forests

- **Top-down**

- ✱ Produces good cover estimates
- ✱ Can detail and map tree and other cover locations

- **Bottom-up**

- ✱ Provides detailed management information
  - ✱ No. trees, spp. composition, tree sizes and health, tree locations, risk information...
- ✱ Provides better means to assess and project ecosystem services and values
  - ✱ Air pollution removal, carbon storage...



# Top-down Approaches

- 30 m resolution imagery (NLCD)
- High resolution imagery (UTC)
- Photo-interpretation (GIS or iTree Canopy)

# NLCD

- **Advantages**

- ✦ **Free**
- ✦ **Covers of lower 48 states**
- ✦ **Data from circa 2011**

- **Disadvantages**

- ✦ **Coarse resolution**
- ✦ **Better suited for state or regional analyses**
- ✦ **Initial analysis - underestimates tree cover**
  - ✦ **Eg. Syracuse 18% NLCD11 vs. PI 30% vs. UTC10 28%**





# UTC

## ● Advantages

- ✎ Accurate, high-resolution cover map
- ✎ Complete census of tree canopy locations
- ✎ Integrates well with GIS
- ✎ Allows the data to be summarized at a broad range of scales
- ✎ Locates potentially available spaces to plant trees



## ● Disadvantages

- ✎ Can be costly if the data are low quality or incomplete (LiDAR)
- ✎ Requires highly trained personnel along with specialized software
- ✎ Significant effort and time needed to produce quality maps
- ✎ Change analyses can locate false changes due to map inaccuracies

# Photo-Interpretation i-Tree Canopy

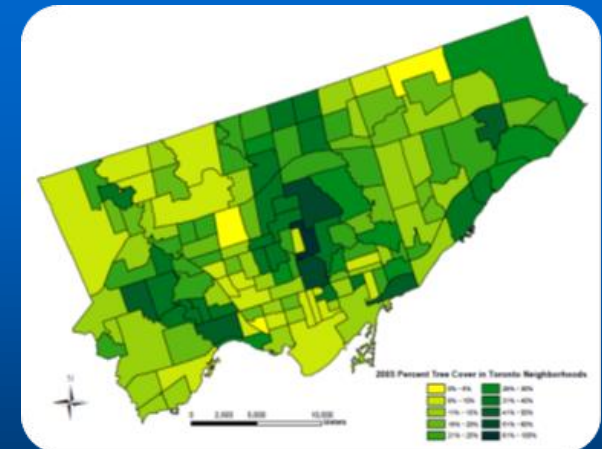


- Advantages

- ✦ Low cost
- ✦ Accuracy can be easily increased
- ✦ Can produce sub-area analyses

- Disadvantages

- ✦ Does not produce detailed cover map
- ✦ Photo-interpreters can create errors though misclassifications
- ✦ Leaf-off imagery can be difficult to interpret
- ✦ i-Tree Canopy interpretation limited to Google images
- ✦ Resulting data cannot be summarized at multiple, user-defined scales





- $N$  = Total points
- $P$  = no. hits;  $Q$  = no. misses ( $N - P$ )
- $p$  = % hits ( $P/N$ );  $q$  = % misses ( $Q/N$ )
- %cover =  $P/N$
- $SE = \sqrt{p \cdot q / N}$



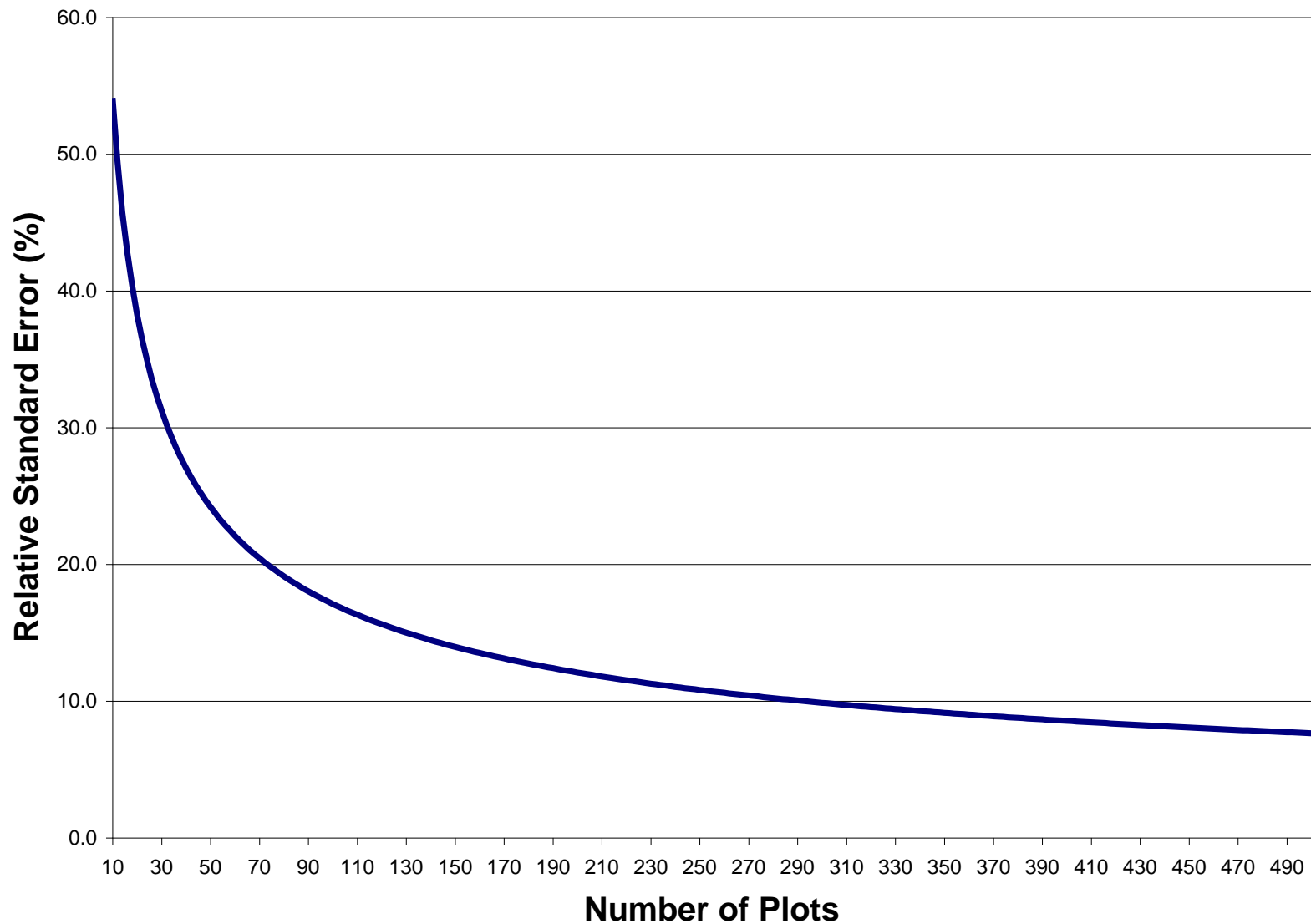
# Standard Error

- **Measure of precision**
  - 68% confidence =  $\pm 1$  SE
  - 95% confidence =  $\pm 1.96$  SE
  - 99% confidence =  $\pm 2.58$  SE
- **E.g., at 95% CI (Margin of Error)**
  - 30% canopy, 220 pts, ME  $\pm 6\%$
  - Between 24% and 36%





# Effect of sample size on precision

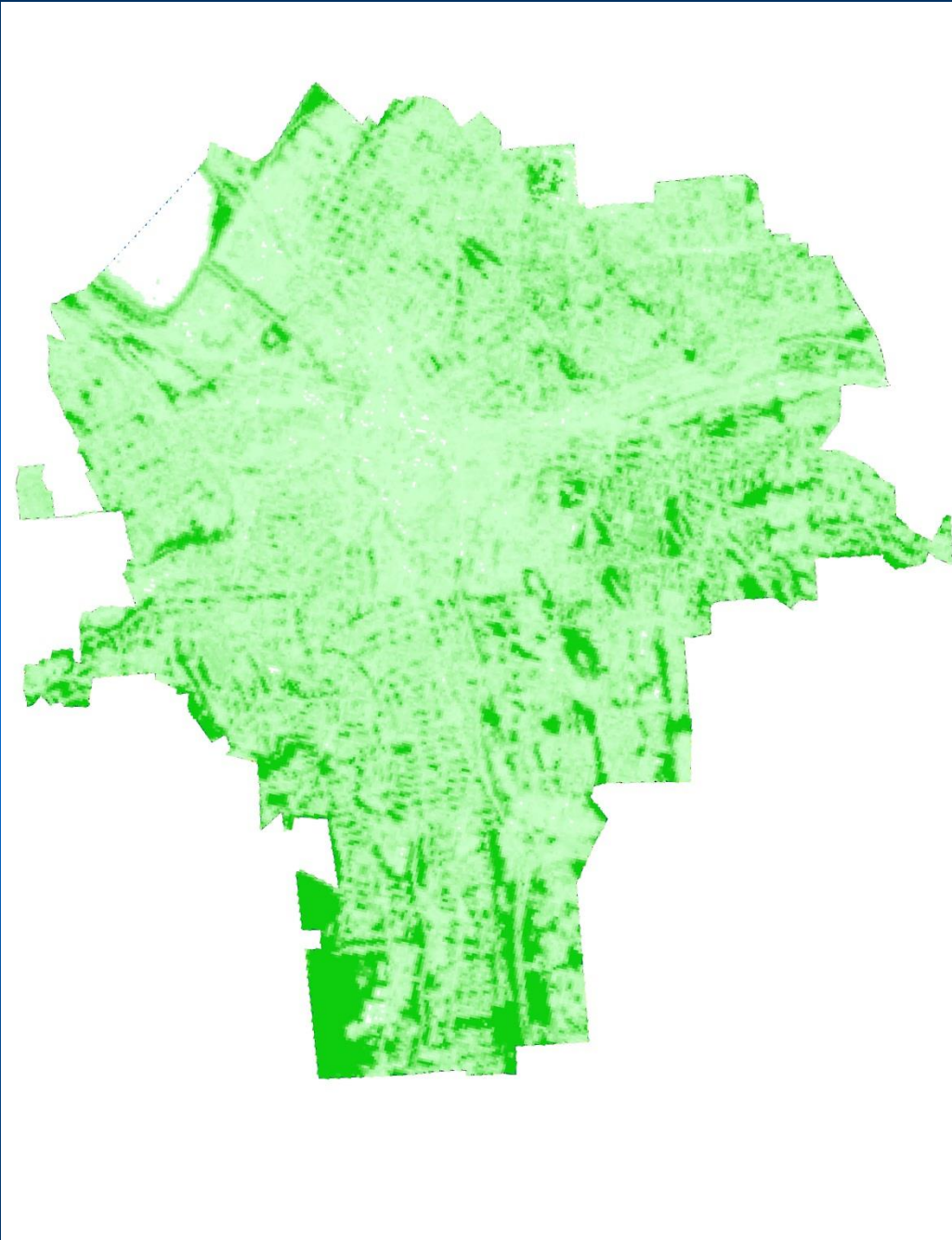




# Demo

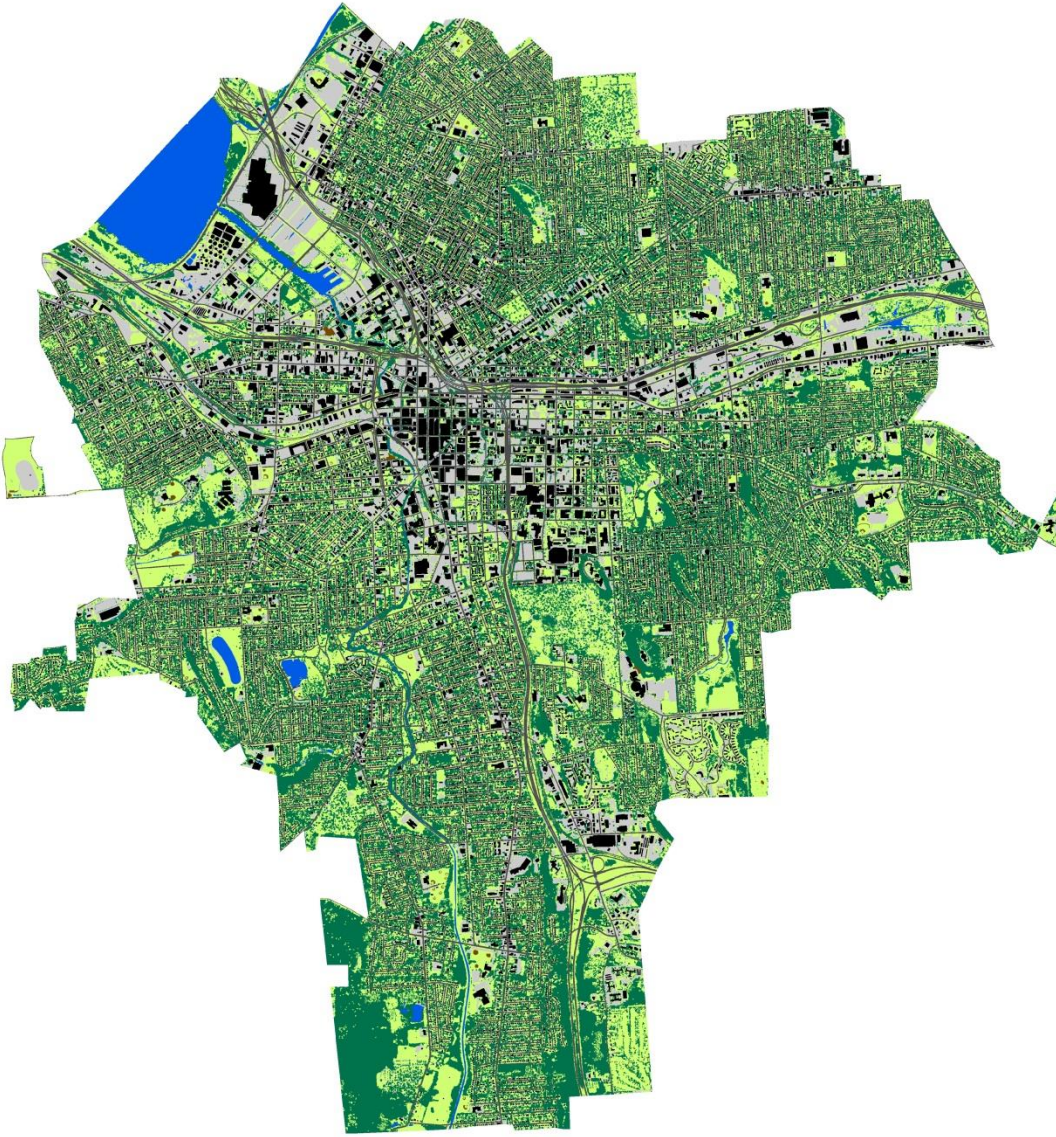


<http://www.itreetools.org/canopy/index.php>



## NLCD11

- 18%
- 3,000 acres



**UTC 2010**

● **28%**

● **4,700 acres**





i-Tree

Tools for Assessing and Managing  
Community Forests

Get the Tools.



Google Custom Search

Search

Username

Password

Login

Forgot Username or Password?

Register



Home

About

Applications

Utilities

Resources

Support

News

How It Works | Report | Export | Start Over | Exit



## i-Tree Canopy v6.0

Percent Cover ( $\pm$ SE)

29.3  $\pm$ 3.05      68.9  $\pm$ 3.11      1.80  $\pm$ 0.00

Click to Enlarge

				T	NT	wat
Id	Cover Class	Latitude	Longitude			
1	Tree	43.05251	-76.09846			
2	Non-Tree	43.03337	-76.09698			
3	Non-Tree	43.07480	-76.13632			
4	Tree	43.02939	-76.11291			
5	water	43.02526	-76.16929			
6	Non-Tree	43.03244	-76.12084			
7	Tree	43.07180	-76.11327			
8	Non-Tree	43.07249	-76.12001			
9	Non-Tree	43.05205	-76.11533			
10	Non-Tree	43.06170	-76.11335			

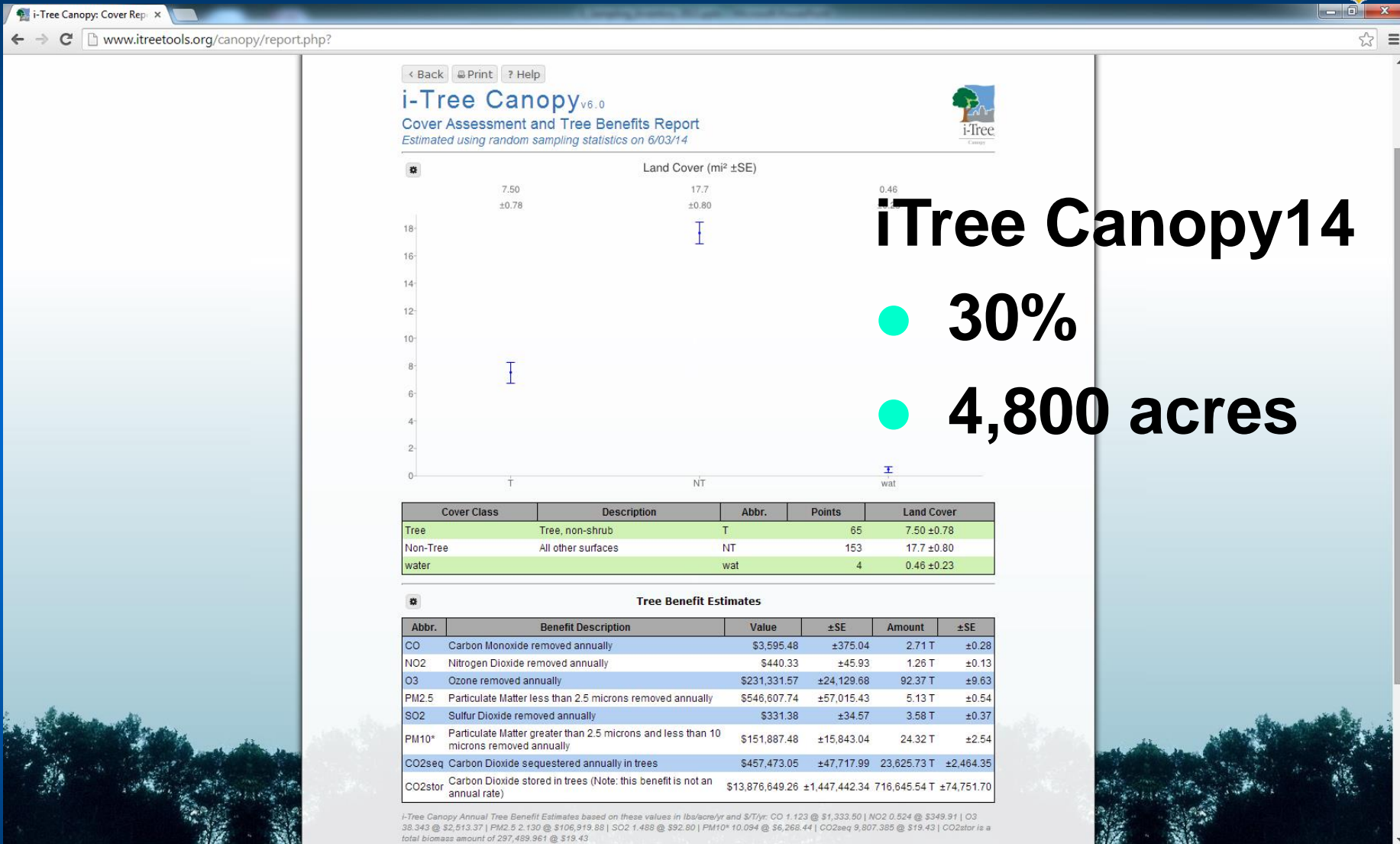
Page 1 of 23 | View 1 - 10 of 223

Remember, the more points you survey, the lower your Standard Error, and the more precise your sampling will be. More points surveyed provide for a better estimation of Land Cover across your study area.

### Save Your Data

Save Data | Save Early. Save Often. Don't lose your project data!





iTree Canopy14

30%

4,800 acres



# Questions?