



Natural Filters Restoration

Program:

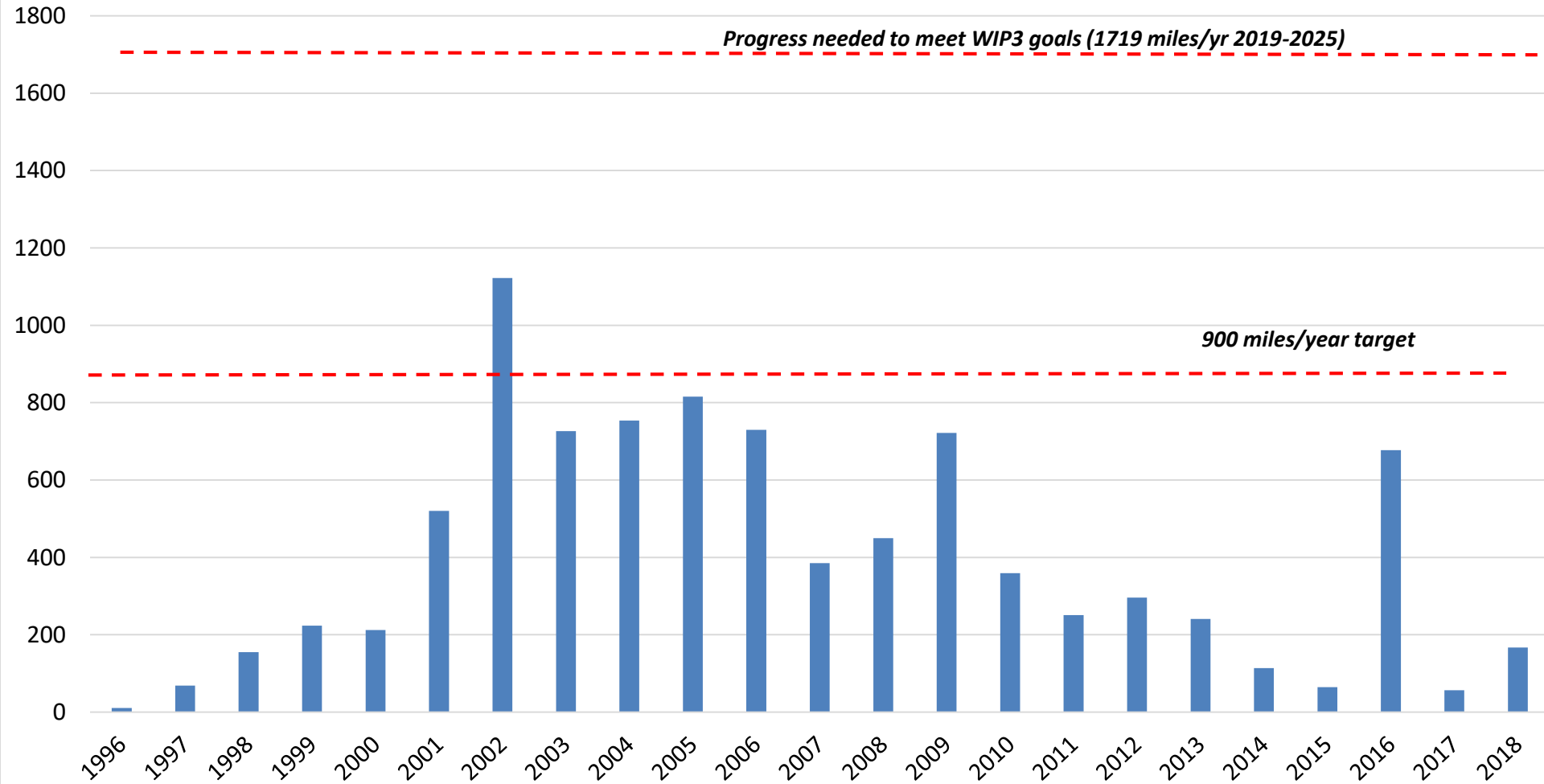
Concept for the Chesapeake

*Katie Brownson and Sally Claggett, USFS
Craig Highfield, ACB*

Miles of Riparian Forest Buffers Planted in the Chesapeake Bay Watershed

Progress needed to meet WIP3 goals (1719 miles/yr 2019-2025)

900 miles/year target



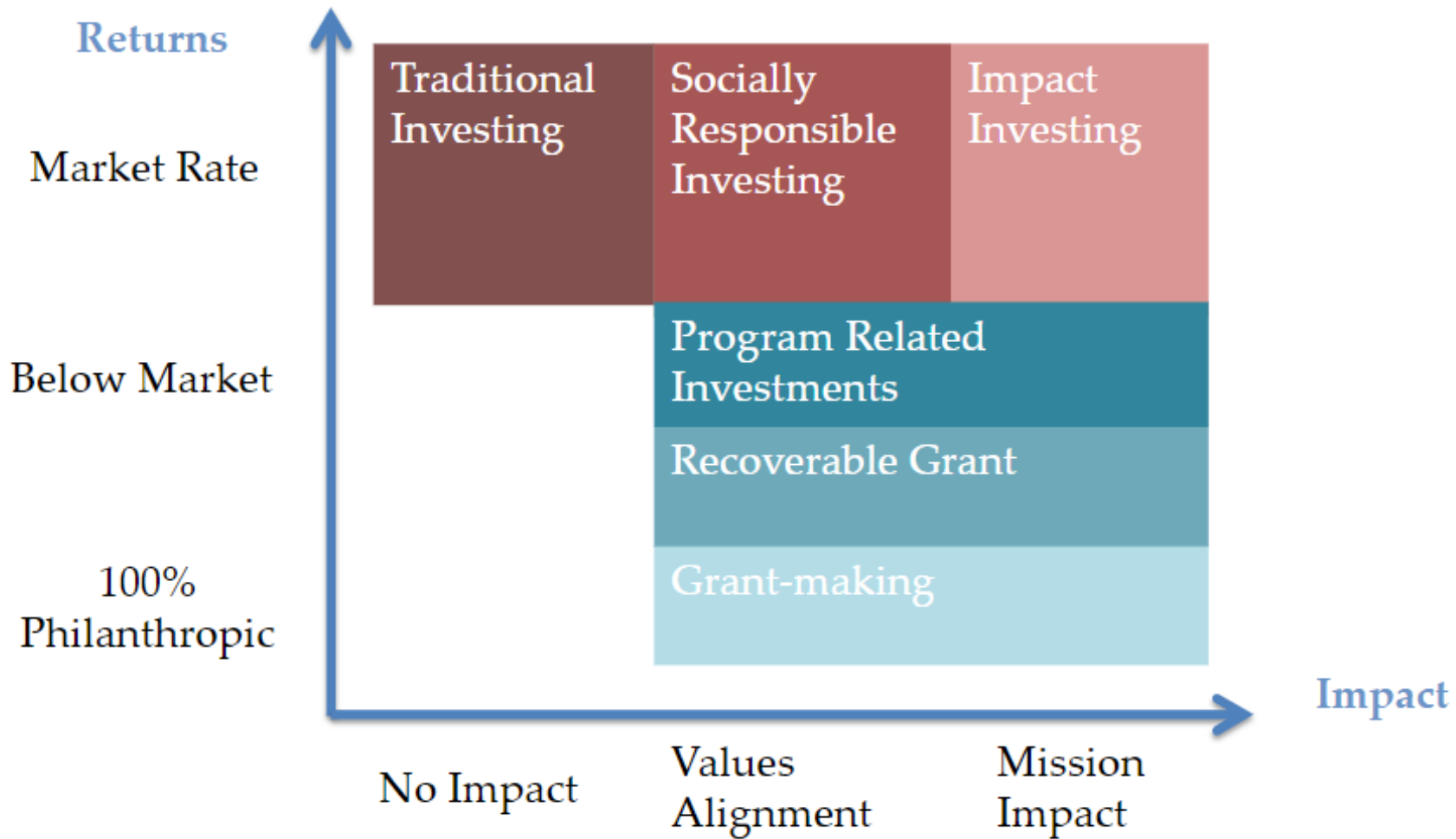


Pilot Programs from around the Watershed

- **NY: USC Buffer Program and DEC's Trees for Tributaries**
 - USC Buffers- Matches State/Fed program, or stand-alone, application involves site-suitability assessment, funds whole systems, or components.
 - Trees-for-Tribs- Buffer gap-filler program- provides materials, plants, and technical assistance. Short, two-page application. Locally-led (CD or Municipality), work w/ landowner to complete tasks such as site prep, etc.
- **PA: Stream ReLeaf**
 - Buffer Gap-filler program for shovel-ready projects.
 - Flat per-acre rate. Very flexible- each buffer designed for landowner by partner, approved by forester.
 - Requires local-partner lead (NGO, CD, etc.)
- **VA: James River Buffer Program**
 - Very low-cost, site-specific, and flexible- allow for natural re-gen, bare-root, etc.
 - Designed based on forester recommendations and landowner desires.
 - Blueprint/framework intended to be replicated beyond James River eventually.
- **MD: Healthy Forest, Healthy Waters**
 - MD DNR Trust Fund (rental –gas tax) Maryland Forest Foundation and Alliance for the Chesapeake
 - Alliance works with MD Forest Service to assemble and implement the projects
 - Tree planting and 3 years of maintenance provided free.
 - Targets rural and exurban properties within DNR Trust Fund's priority watersheds for pollution reductions

Common Elements are:

- Efficient, one-stop-shop for technical and financial assistance
- No out-of-pocket expenses for landowners
- Maintenance is provided
- Flexible, can meet landowner needs
- Available to non-agricultural landowners
- Continual operations (fast service, never closes)
- Easy to enroll





Conservation of threatened species and wilderness areas

This block contains three icons: a tree, a mountain range, and a koala's head.

Native vegetation buffers along wilderness areas and streams

This block contains an icon of a winding stream flowing through a line of trees.

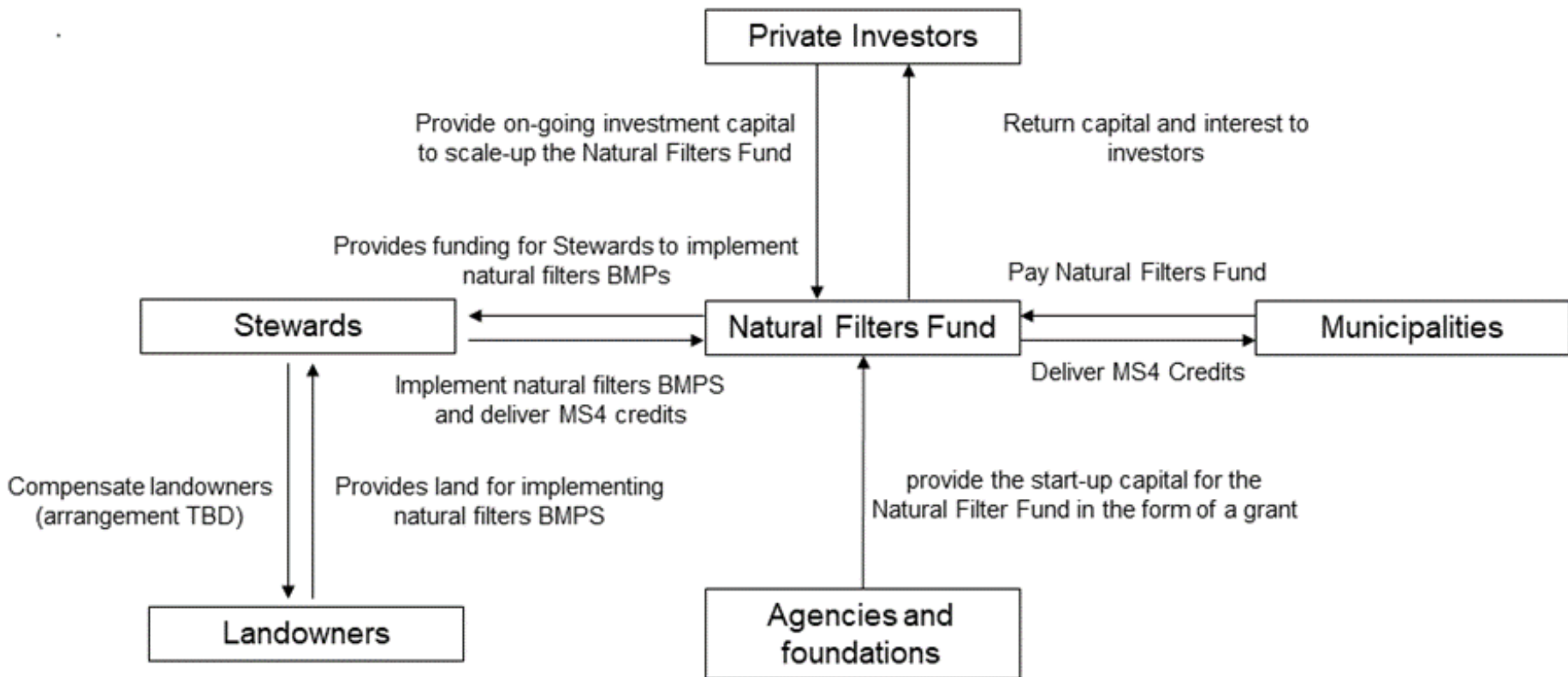
Sustainably managed farmlands and forestry

This block contains two icons: a cow and a cluster of trees.

Mitigation of industrial and urban impacts through green infrastructure

This block contains an icon of a plant growing in a field, with an arrow pointing from a cluster of buildings towards it.





**Sustainable Conservation Investment Fund:
An impact investment Approach for Chesapeake Farms and Forests**



CONSERVATION INNOVATION GRANTS



Our Goals

- Plant more forests
- Use existing markets as a conservation opportunity for agricultural producers and landowners
- Revolving loan (investment)
- Work in collaboration with Land Trusts

Ecosystem Markets

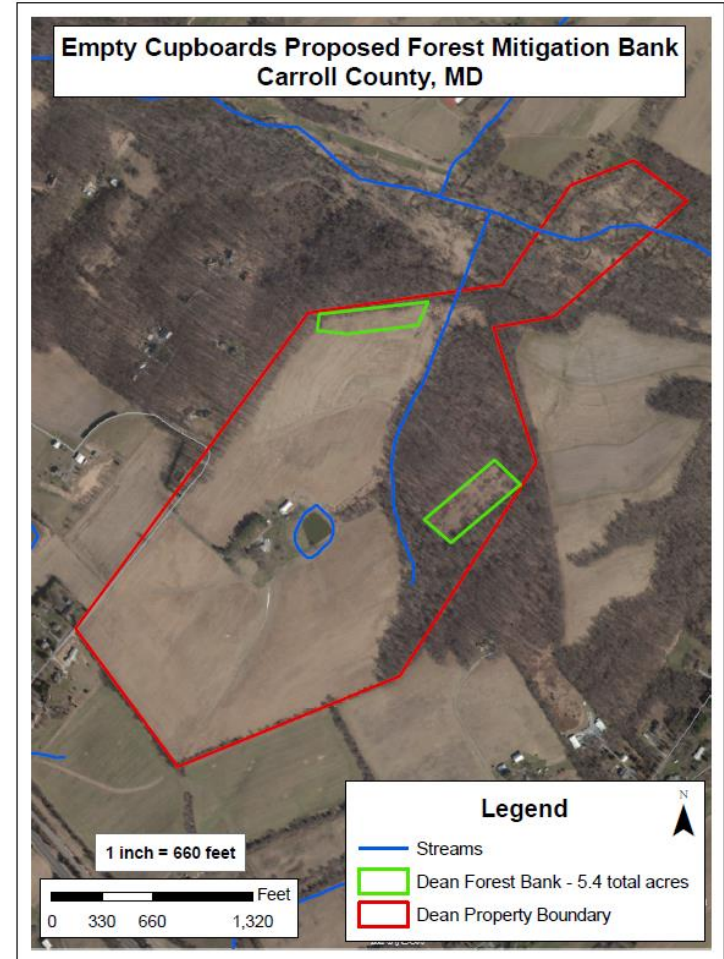
- Virginia Nutrient Trading Program
- Maryland Forest Conservation Banking programs

Carroll County Forest Banking Program

- No mitigation via “in-lieu fee”
- Afforestation banks only
- Credit sales average \$16,000 per acre

Certified Forest Bank

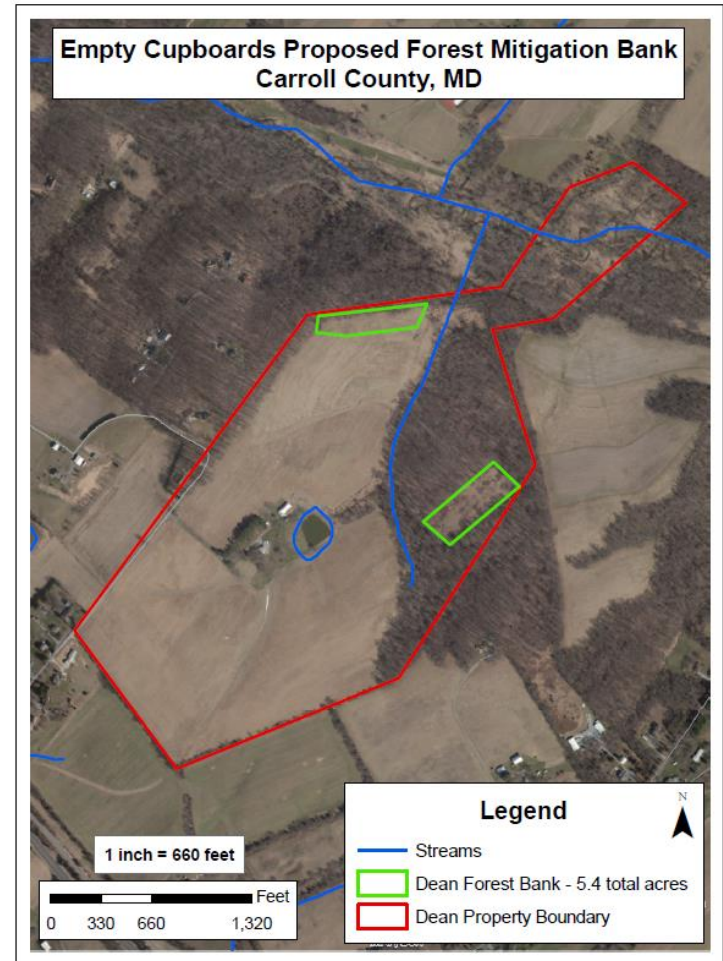
5.4 acres X \$16K = **\$86,400**

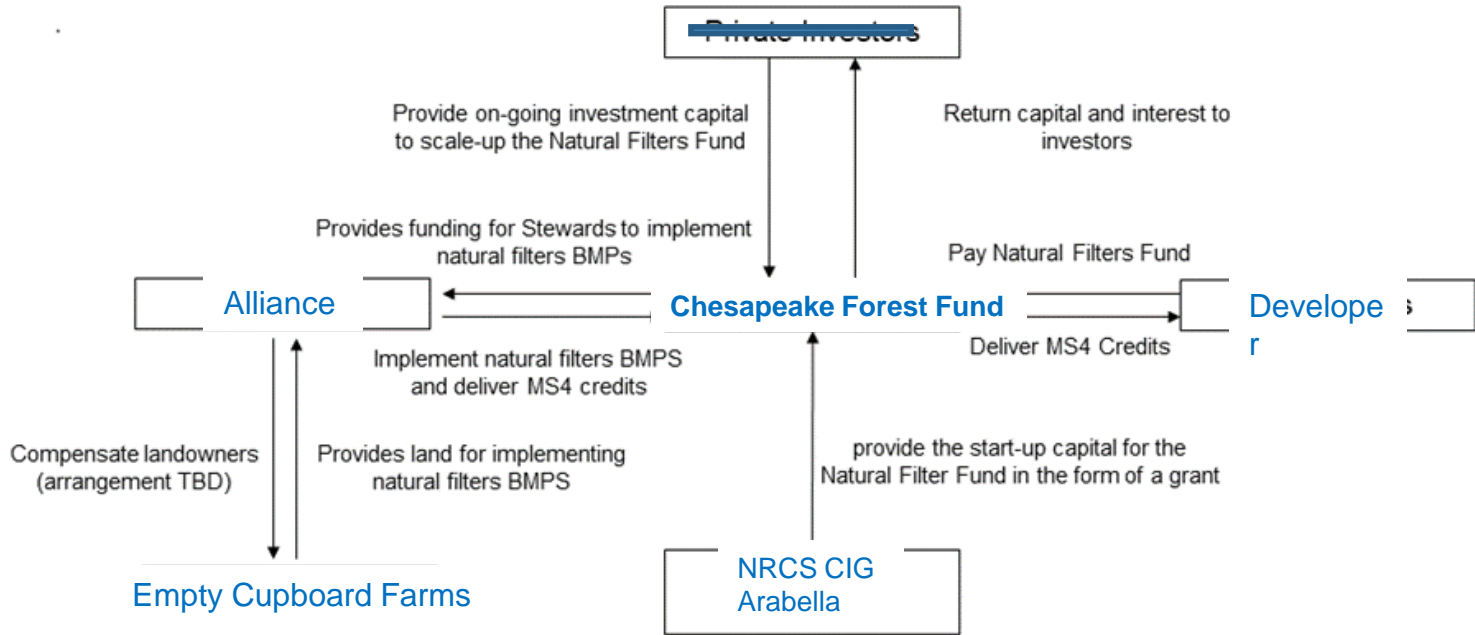


Carroll County Forest Banking Program

Upfront costs to establish a bank:

Surveying / Drafting services:	\$6950
Implementation & maintenance (3yrs):	\$29,211
Easement/title work:	\$1000
Total	\$37,161
Cash Surety Bond:	\$32,131



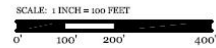


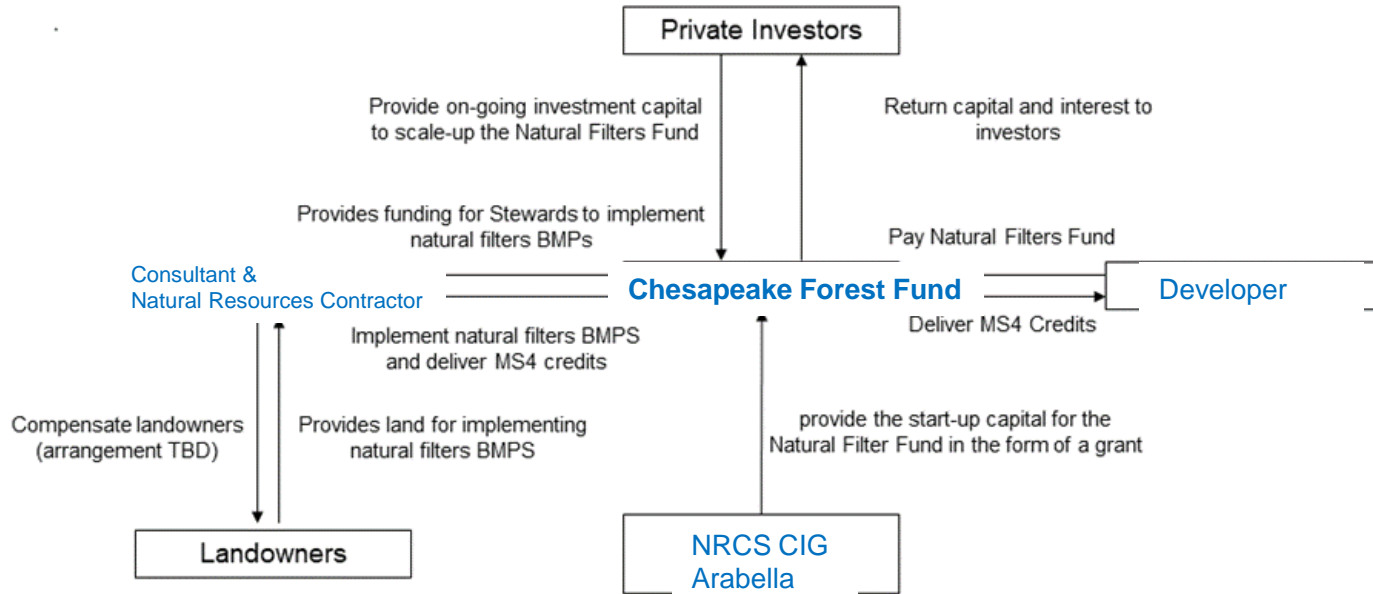
-  OFFER ACCORDS
-  RIGHT-OF-WAY LIMITS
-  PARCEL LIMITS
-  PARCEL LIMITS (PER L&L PLAT SURVEY)
-  EXISTING PLANS/MEASURES
-  APPROXIMATE RESOURCE PROTECTION AREA



SMOKEHOUSE LANE NUTRIENT REDUCTION IMPLEMENTATION PLAN

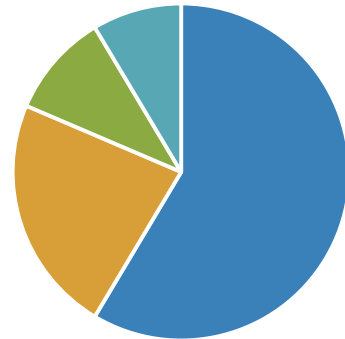
SCALE: 1 INCH = 100 FEET





Examples of Existing Funding

- FEMA-Incorporate buffers into state/county hazard mitigation plans to be eligible for pre-disaster mitigation
- LWCF- integrating buffers into Statewide Comprehensive Recreation Plans
- State programs- e.g., PA's Growing Greener
- Existing programs/agencies- what other pockets of funding could interface with the Fund?



▪ Who is the Fund Manager(s)?



Our Team Can Help:

- Further develop NFRP
- Explore existing public financing opportunities
- Apply for start-up funds
- Find sources of private financing

We would like to work with a designated group or individual at each state to help develop and implement this program.